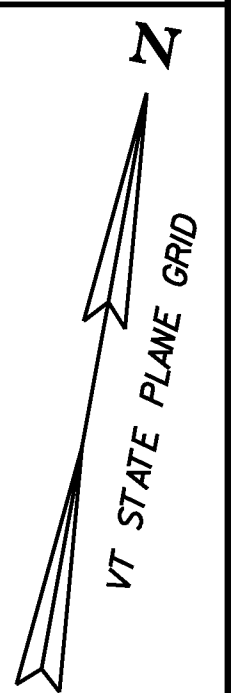




- NOTES:**
1. MATCH EXISTING STRIPING CONFIGURATION.
 2. REMOVED STREET NAME SIGNS SHALL BE RETURNED TO THE TOWN OF DANVILLE.
 3. SEE SHEET SP-1 FOR LEGEND

646.494 DURABLE LETTER OR SYMBOL, POLYUREA
 646.690 TEMPORARY LETTER OR SYMBOL
 STA. 2+134.6 - "STOP"
 STA. 2+157.5, LT - "STOP"



675.50 REMOVING SIGNS
 AS SHOWN - 11

646.486 DURABLE 600 MM STOP BAR,
 RECESSED POLYUREA
 646.680 TEMPORARY 600 MM STOP BAR
 STA. 2+137.3, LT & RT (PARK ST.)
 STA. 2+154.7, LT (PARK ST.)

646.416 DURABLE 100 MM YELLOW LINE,
 RECESSED POLYUREA
 646.610 TEMPORARY 100 MM YELLOW LINE
 STA. 4+033.0 TO 4+098.3, C (DOUBLE)
 STA. 2+154.4 TO 2+209.7, C (DOUBLE)
 STA. 2+212.1 TO 2+244.6, C (DOUBLE)

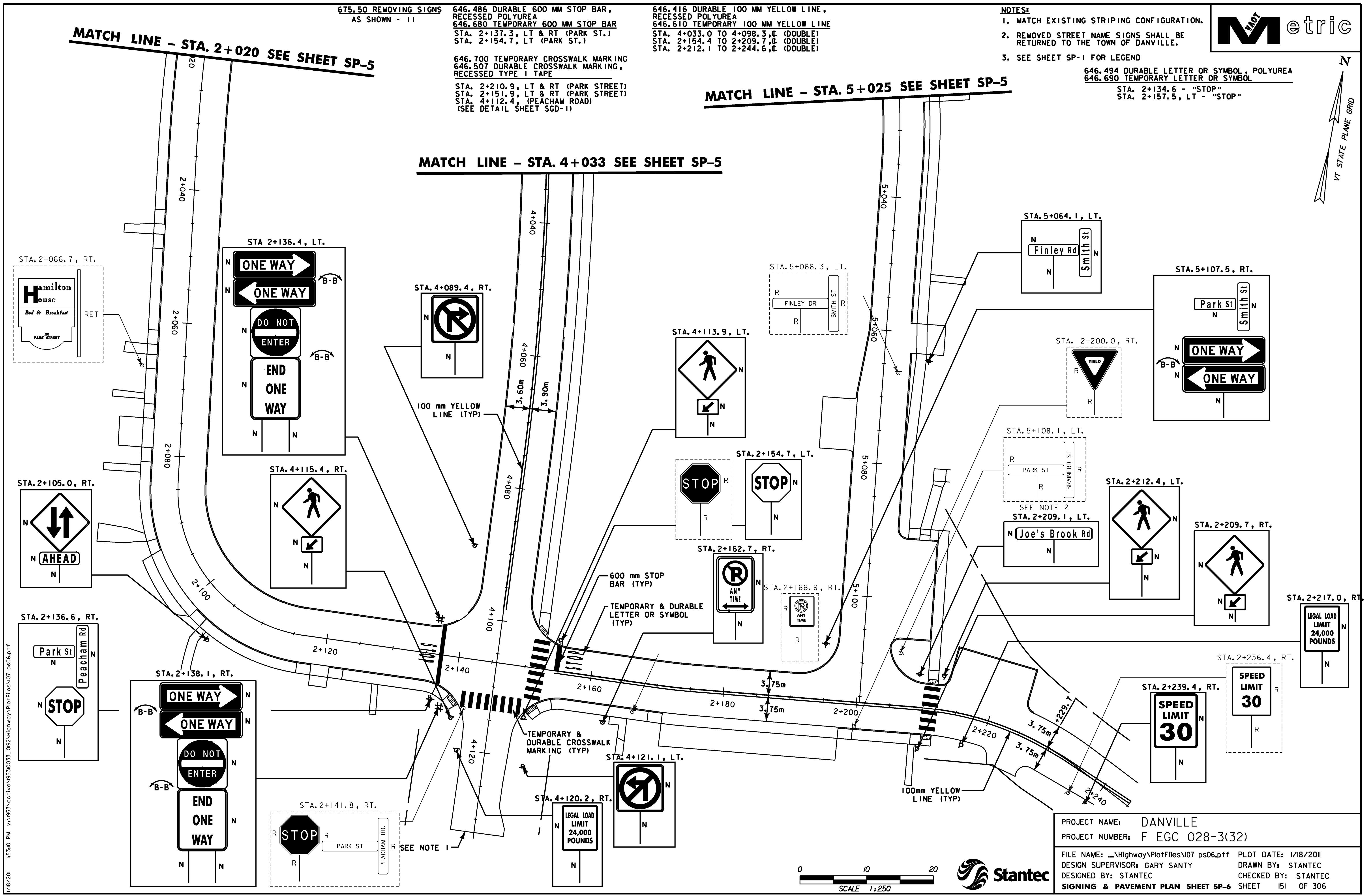
646.700 TEMPORARY CROSSWALK MARKING
 646.507 DURABLE CROSSWALK MARKING,
 RECESSED TYPE 1 TAPE

STA. 2+210.9, LT & RT (PARK STREET)
 STA. 2+151.9, LT & RT (PARK STREET)
 STA. 4+112.4, (PEACHAM ROAD)
 (SEE DETAIL SHEET SGD-1)

MATCH LINE - STA. 2+020 SEE SHEET SP-5

MATCH LINE - STA. 5+025 SEE SHEET SP-5

MATCH LINE - STA. 4+033 SEE SHEET SP-5



1/18/2011 10:53:00 PM v:\1953\active\19530033_0952\Highway\PlotFiles\107 ps06.plt
 1/18/2011 10:53:00 PM v:\1953\active\19530033_0952\Highway\PlotFiles\107 ps06.plt

PROJECT NAME: DANVILLE
 PROJECT NUMBER: F EGC 028-3(32)
 FILE NAME: ...Highway\PlotFiles\107 ps06.plt PLOT DATE: 1/18/2011
 DESIGN SUPERVISOR: GARY SANTY DRAWN BY: STANTEC
 DESIGNED BY: STANTEC CHECKED BY: STANTEC
SIGNING & PAVEMENT PLAN SHEET SP-6 SHEET 151 OF 306

