



646.456 DURABLE 200 MM YELLOW LINE, RECESSED POLYUREA
 646.650 TEMPORARY 200 MM YELLOW LINE
 STA. 19+070.0 TO 19+101.2 (DIAGONALS)
 STA. 19+133.4 TO 19+160.0 (DIAGONALS)
 STA. 19+184.7 TO 19+186.1 (DIAGONALS)
 STA. 19+188.6 TO 19+219.2 (DIAGONALS)
 STA. 19+231.0 TO 19+258.5 (DIAGONALS)
 646.486 DURABLE 600 MM STOP BAR, RECESSED POLYUREA
 646.680 TEMPORARY 600 MM STOP BAR
 STA. 19+158.5, RT
 STA. 19+190.1, LT
 STA. 03+013.6, LT (HILL ST.)
 STA. 04+022.6, LT (PEACHAM RD.)
 STA. 05+019.0, LT & RT (SMITH ST.)

646.416 DURABLE 100 MM YELLOW LINE, RECESSED POLYUREA
 646.610 TEMPORARY 100 MM YELLOW LINE
 STA. 19+070.0 TO 19+101.5, LT (DOUBLE)
 STA. 19+101.5 TO 19+114.8, LT (SINGLE)
 STA. 19+070.0 TO 19+114.5, RT (DOUBLE)
 STA. 19+117.2 TO 19+120.3, LT (SINGLE)
 STA. 19+116.9 TO 19+120.3, RT (DOUBLE)
 STA. 19+132.6 TO 19+135.0, RT (DOUBLE)
 STA. 19+132.6 TO 19+160.1, LT (DOUBLE)
 STA. 19+135.0 TO 19+160.1, RT (SINGLE)
 STA. 03+012.9 TO 03+017.3, LT (DOUBLE)
 STA. 04+022.6 TO 04+033.0, LT (DOUBLE)
 STA. 19+184.5 TO 19+186.1, RT (SINGLE)
 STA. 19+184.5 TO 19+208.3, RT (SINGLE)
 STA. 19+184.5 TO 19+186.2, LT (DOUBLE)
 STA. 19+188.6 TO 19+219.2, LT (DOUBLE)
 STA. 19+231.0 TO 19+260.0, RT (DOUBLE)
 STA. 19+231.0 TO 19+260.0, LT (DOUBLE)
 STA. 19+208.3 TO 19+219.2, RT (DOUBLE)

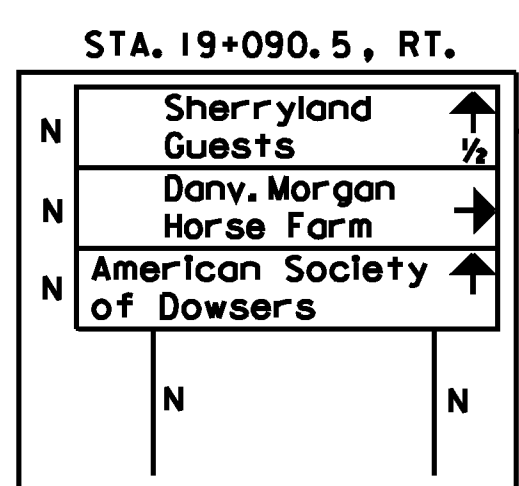
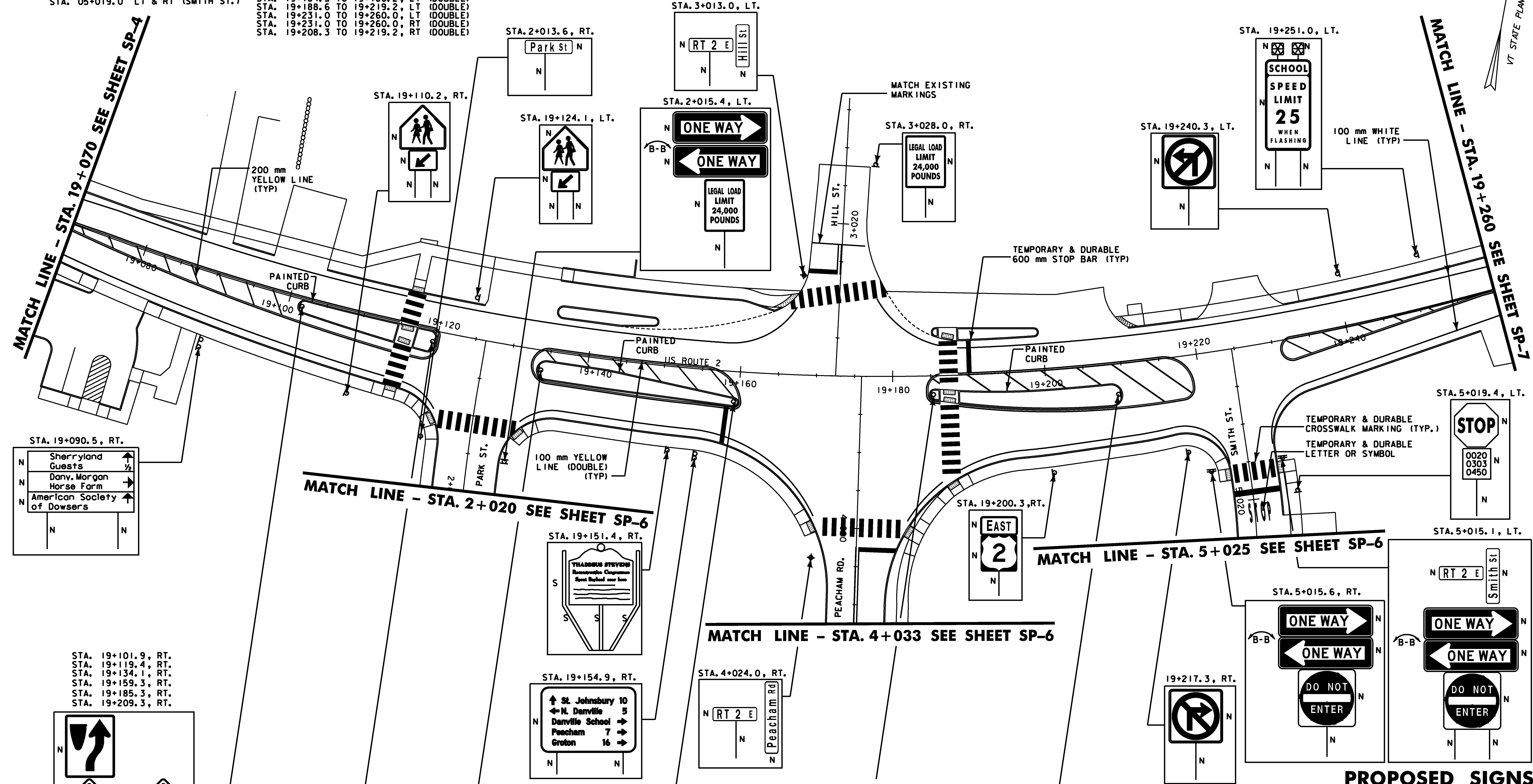
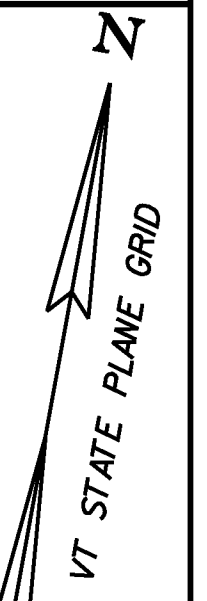
646.494 DURABLE LETTER OR SYMBOL, POLYUREA
 646.690 TEMPORARY LETTER OR SYMBOL
 STA. 05+021.8, "STOP"
 646.81 PAINTED CURB
 STA. 19+101.2 TO 19+114.8, LT & RT
 STA. 19+117.2 TO 19+120.3, LT & RT
 STA. 19+133.4 TO 19+160.0, LT & RT
 STA. 19+184.7 TO 19+186.1, RT
 STA. 19+188.6 TO 19+209.8, RT

646.700 TEMPORARY CROSSWALK MARKING
 646.507 DURABLE CROSSWALK MARKING, RECESSED TYPE I TAPE
 STA. 19+116.0
 STA. 19+187.4
 STA. 2+011.0 (PARK STREET)
 STA. 4+019.9 (PEACHAM ROAD)
 STA. 3+010.9 (HILL STREET)
 STA. 5+016.3 (SMITH STREET)
 (SEE DETAIL SHEET SGD-1)
 675.60 ERECTING SALVAGED SIGNS AS SHOWN - 1

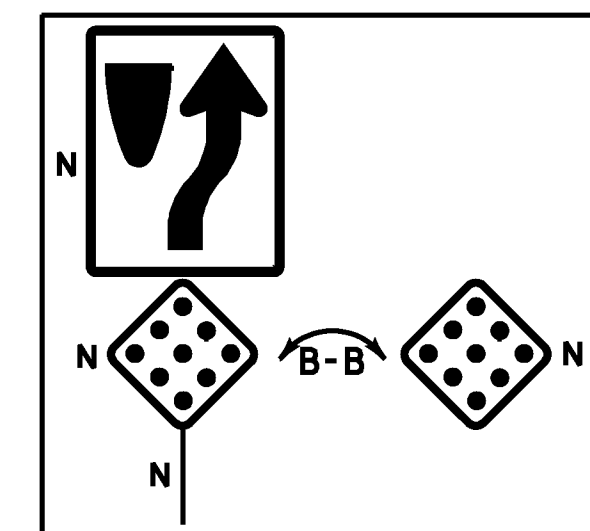
675.50 REMOVING SIGNS AS SHOWN - 44

646.406 DURABLE 100 MM WHITE LINE, RECESSED POLYUREA
 646.600 TEMPORARY 100 MM WHITE LINE
 STA. 19+070.0, LT TO 19+115.0, LT
 STA. 19+117.4, LT TO 03+008.8, LT
 STA. 19+070.0, RT TO 19+114.3, RT
 STA. 19+116.7, RT TO 19+121.3, RT
 STA. 19+132.4, RT TO 04+018.5, RT
 STA. 04+013.5, LT TO 04+018.8, LT
 STA. 03+010.4, RT TO 19+186.1, LT
 STA. 19+188.6, LT TO 19+260.0, LT
 STA. 19+188.5, RT TO 05+014.9, RT
 STA. 05+013.1, LT TO 19+260.0, RT

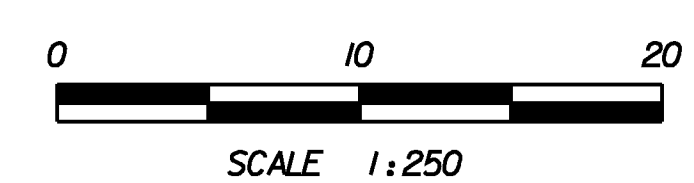
678.16 FLASHING BEACON, GROUND MOUNTED
 STA. 19+251.0, LT



STA. 19+101.9, RT.
 STA. 19+119.4, RT.
 STA. 19+134.1, RT.
 STA. 19+159.3, RT.
 STA. 19+185.3, RT.
 STA. 19+209.3, RT.



NOTES:
 1. FOR CLARITY, SHEET 5 HAS BEEN SEPARATED INTO TWO SHEETS; EXISTING SIGNS ON SHEET 5A, PROPOSED SIGNS ON SHEET 5.
 2. SEE SHEET SP-1 FOR LEGEND.



PROPOSED SIGNS

PROJECT NAME: DANVILLE
 PROJECT NUMBER: F EGC 028-3(32)
 FILE NAME: ...Highway\PlotFiles\I05 ps05.p1f PLOT DATE: 1/18/2011
 DESIGN SUPERVISOR: GARY SANTY DRAWN BY: STANTEC
 DESIGNED BY: STANTEC CHECKED BY: STANTEC
 SIGNING & PAVEMENT PLAN SHEET SP-5 SHEET 149 OF 306