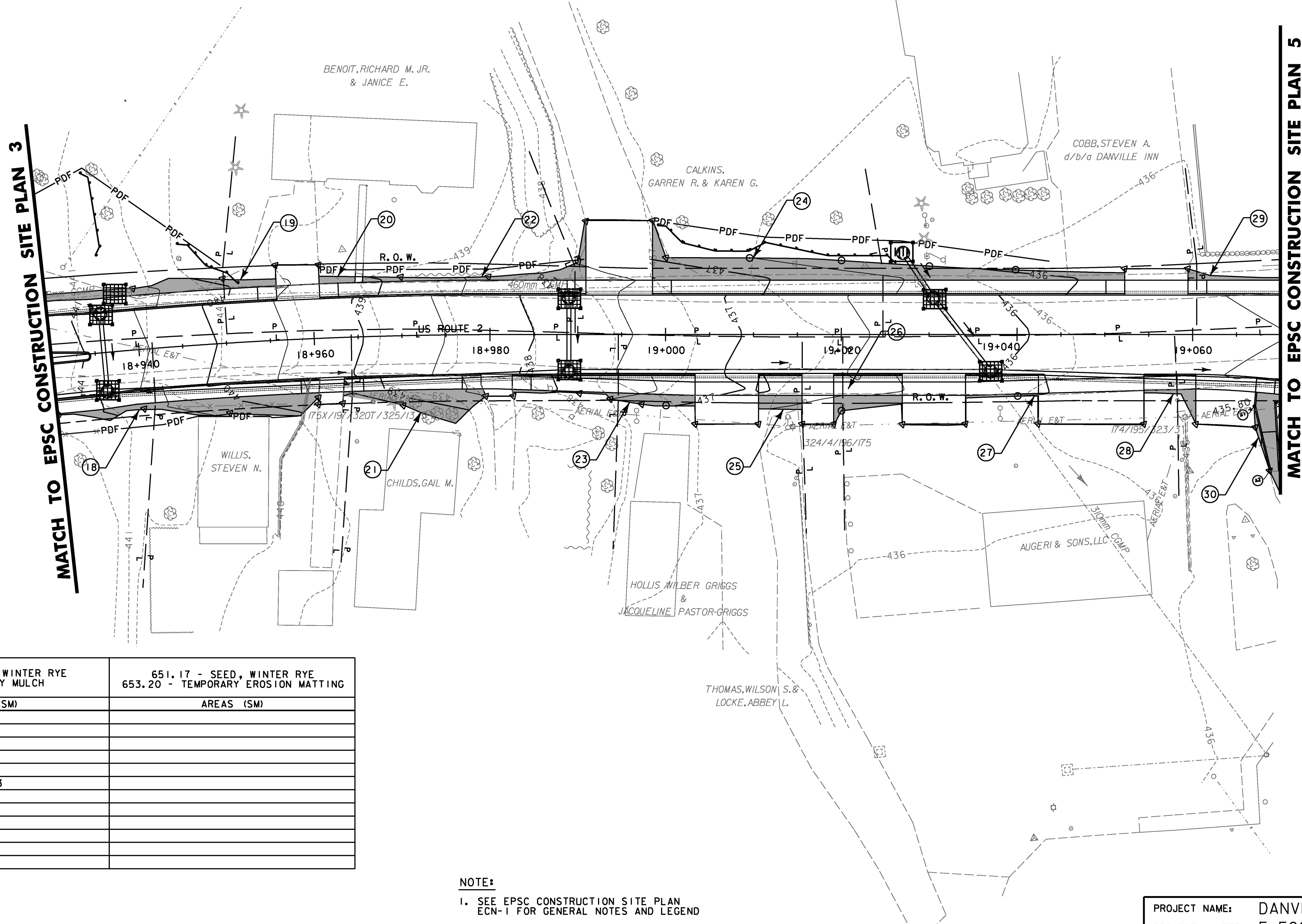


**649.51 - GEOTEXTILE FOR SILT FENCE**  
 STA. 18+935.1 TO 18+936.6, LT  
 STA. 18+945.1 TO 18+951.7, LT  
 STA. 18+999.1 TO 19+026.2, LT

**653.40 - INLET PROTECTION DEVICE, TYPE I**  
 STA. 19+026.9, LT

**653.41 - INLET PROTECTION DEVICE, TYPE II)**  
 STA. 18+936.1, LT  
 STA. 18+936.1, RT  
 STA. 18+937.8, LT  
 STA. 18+989.0, LT  
 STA. 18+989.0, RT  
 STA. 19+030.6, LT  
 STA. 19+037.0, RT



AREA NUMBER	651.17 - SEED, WINTER RYE 651.25 - HAY MULCH	651.17 - SEED, WINTER RYE 653.20 - TEMPORARY EROSION MATTING
	AREAS (SM)	AREAS (SM)
19	27.1	
20	3.2	
21	32.3	
22	19.5	
23	13.8	
24	101.3	
25	7.7	
26	11.6	
27	2.1	
28	5.4	
29	24.4	
30	47.6	

**NOTE:**  
 1. SEE EPSC CONSTRUCTION SITE PLAN ECN-1 FOR GENERAL NOTES AND LEGEND

<b>DATUM</b>	
VERTICAL	NAVD88
HORIZONTAL	NAD83(92)



PROJECT NAME:	DANVILLE
PROJECT NUMBER:	F EGC 028-3(32)
FILE NAME:	...\\plotfiles\EPSC ECN-04.ptf
DESIGN SUPERVISOR:	GARY SANTY
DESIGNED BY:	STANTEC
EPSC CONSTRUCTION PLAN	ECN-4
PLOT DATE:	1/18/2011
DRAWN BY:	STANTEC
CHECKED BY:	STANTEC
SHEET	121 OF 306

STA 18+930 TO 19+070

1/18/2011 11:52:13 PM v:\1953\active\19530033\_10952\highway\plotfiles\EPSC ECN-04.ptf