

653.55 - PROJECT DEMARCATION FENCE

STA. 19+450.0 TO 19+465.0, LT
 STA. 19+450.0 TO 19+486.8, RT
 STA. 19+488.0 TO 19+590.0, LT
 STA. 19+490.7 TO 19+521.5, RT
 STA. 19+566.6 TO 19+590.0, RT

SOIL CLASSIFICATION B
 PEACHAM MUCK
 0-3% SLOPES
 "K" FACTOR = 0.37 (ASSUMED)
 CLASSIFIED HIGHLY ERODIBLE

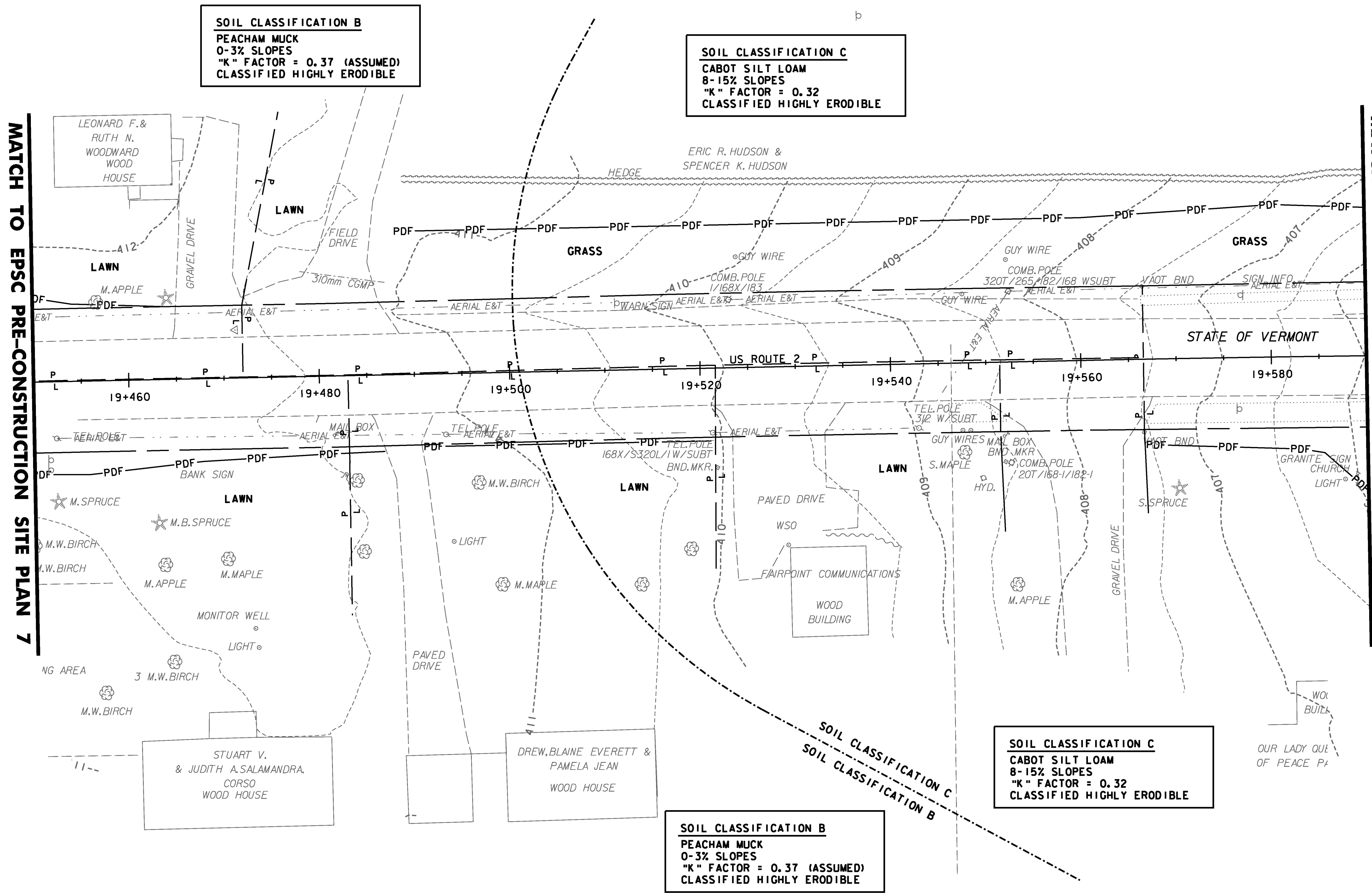
SOIL CLASSIFICATION C
 CABOT SILT LOAM
 8-15% SLOPES
 "K" FACTOR = 0.32
 CLASSIFIED HIGHLY ERODIBLE

SOIL CLASSIFICATION C
 CABOT SILT LOAM
 8-15% SLOPES
 "K" FACTOR = 0.32
 CLASSIFIED HIGHLY ERODIBLE

SOIL CLASSIFICATION B
 PEACHAM MUCK
 0-3% SLOPES
 "K" FACTOR = 0.37 (ASSUMED)
 CLASSIFIED HIGHLY ERODIBLE

MATCH TO EPSC PRE-CONSTRUCTION SITE PLAN 7

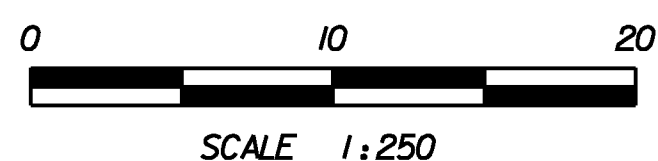
MATCH TO EPSC PRE-CONSTRUCTION SITE PLAN 9



NOTE:
 1. SEE EPSC PRE-CONSTRUCTION SITE PLAN EPR-1 FOR GENERAL NOTES AND LEGEND

STA 19+450 TO 19+590

DATUM	
VERTICAL	NAVD88
HORIZONTAL	NAD83(92)



PROJECT NAME:	DANVILLE
PROJECT NUMBER:	F EGC 028-3(32)
FILE NAME:	...\\plotfiles\EPSC EPR-08.prf
DESIGN SUPERVISOR:	GARY SANTY
DESIGNED BY:	STANTEC
EPSC PRE-CONSTRUCTION PLAN EPR-8	
PLOT DATE:	1/18/2011
DRAWN BY:	STANTEC
CHECKED BY:	STANTEC
SHEET	114 OF 306

1/18/2011 10:51:59 PM v:\1953\active\19530033_0052\highway\plotfiles\EPSC EPR-08.prf