

MATCH TO EPSC PRE-CONSTRUCTION SITE PLAN 5

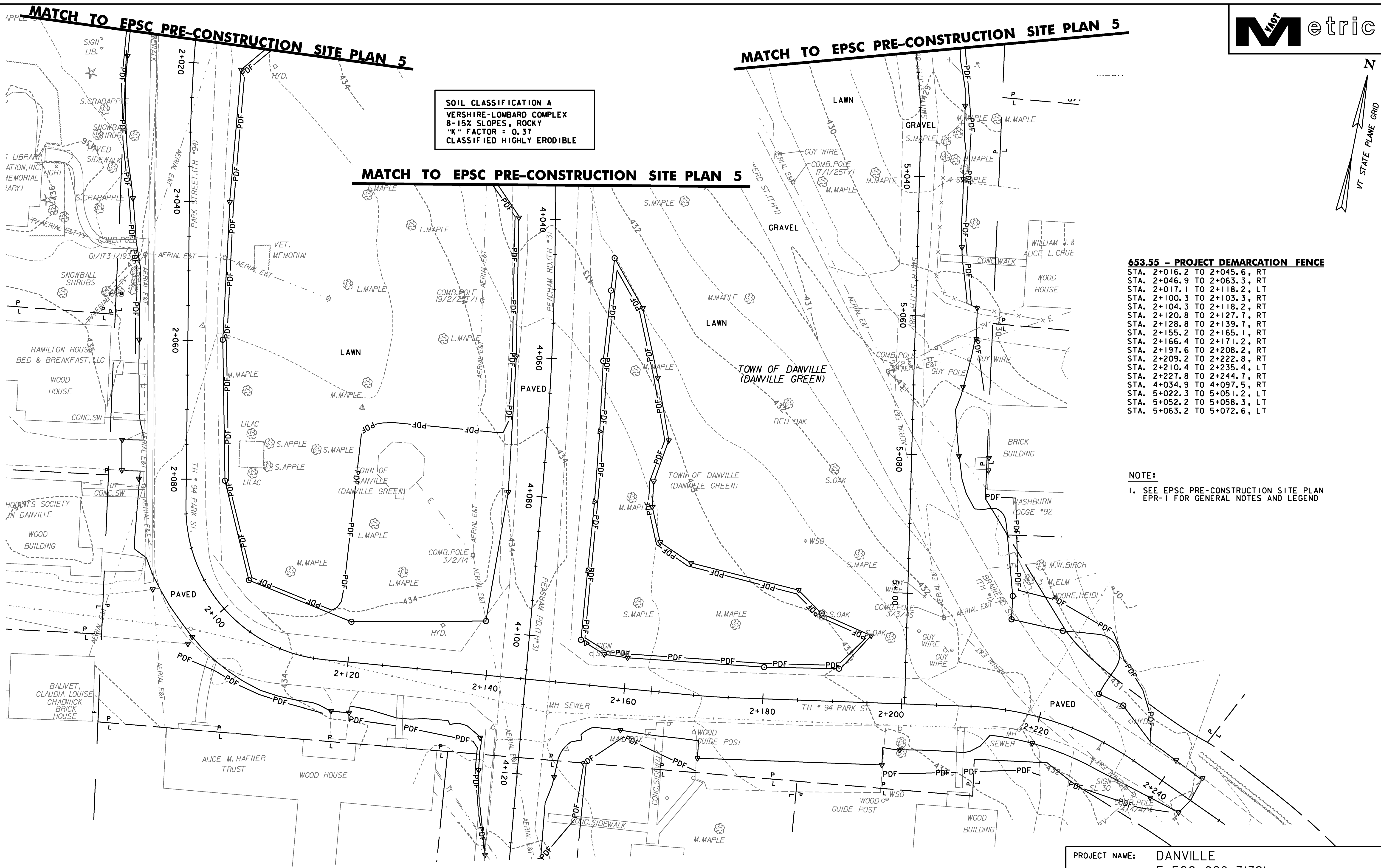
MATCH TO EPSC PRE-CONSTRUCTION SITE PLAN 5

SOIL CLASSIFICATION A
VERSHIRE-LOMBARD COMPLEX
8-15% SLOPES, ROCKY
"K" FACTOR = 0.37
CLASSIFIED HIGHLY ERODIBLE

MATCH TO EPSC PRE-CONSTRUCTION SITE PLAN 5

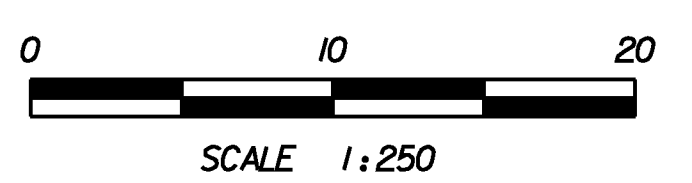
- 653.55 - PROJECT DEMARCATION FENCE**
- STA. 2+016.2 TO 2+045.6, RT
 - STA. 2+046.9 TO 2+063.3, RT
 - STA. 2+017.1 TO 2+118.2, LT
 - STA. 2+100.3 TO 2+103.3, RT
 - STA. 2+104.3 TO 2+118.2, RT
 - STA. 2+120.8 TO 2+127.7, RT
 - STA. 2+128.8 TO 2+139.7, RT
 - STA. 2+155.2 TO 2+165.1, RT
 - STA. 2+166.4 TO 2+171.2, RT
 - STA. 2+197.6 TO 2+208.2, RT
 - STA. 2+209.2 TO 2+222.8, RT
 - STA. 2+210.4 TO 2+235.4, LT
 - STA. 2+227.8 TO 2+244.7, RT
 - STA. 4+034.9 TO 4+097.5, RT
 - STA. 5+022.3 TO 5+051.2, LT
 - STA. 5+052.2 TO 5+058.3, LT
 - STA. 5+063.2 TO 5+072.6, LT

NOTE:
 1. SEE EPSC PRE-CONSTRUCTION SITE PLAN EPR-1 FOR GENERAL NOTES AND LEGEND



DATUM

VERTICAL	NAVD88
HORIZONTAL	NAD83(92)



PROJECT NAME:	DANVILLE	PLOT DATE:	1/18/2011	
PROJECT NUMBER:	F EGC 028-3(32)	DESIGN SUPERVISOR:	GARY SANTY	
FILE NAME:	...\\plotfiles\EPC EPR-06.ptf	DESIGNED BY:	STANTEC	
		EPSC PRE-CONSTRUCTION PLAN EPR-6	CHECKED BY:	STANTEC
			SHEET	112 OF 306

1/18/2011 10:51:56 PM v:\1953\active\1953\0033_1092\highway\plotfiles\EPC EPR-06.ptf