

**653.40 - INLET PROTECTION DEVICE, TYPE I**  
 STA. 18+866.8, RT (FILTER FABRIC)

**653.55 - PROJECT DEMARCATION FENCE**  
 STA. 1+022.7 TO 1+075.4, LT  
 STA. 1+016.7 TO 1+075.5, RT  
 STA. 18+770.0 TO 18+796.3, RT  
 STA. 18+770.0 TO 18+789.0, LT  
 STA. 18+792.5 TO 18+825.6, LT  
 STA. 18+799.3 TO 18+903.9, RT  
 STA. 18+908.0 TO 18+930.0, RT  
 STA. 18+839.2 TO 18+898.6, LT

**653.41 - INLET PROTECTION DEVICE, TYPE II**  
 STA. 18+914.3, RT (FILTER FIBER)  
 STA. 18+914.5, LT (FILTER FIBER)

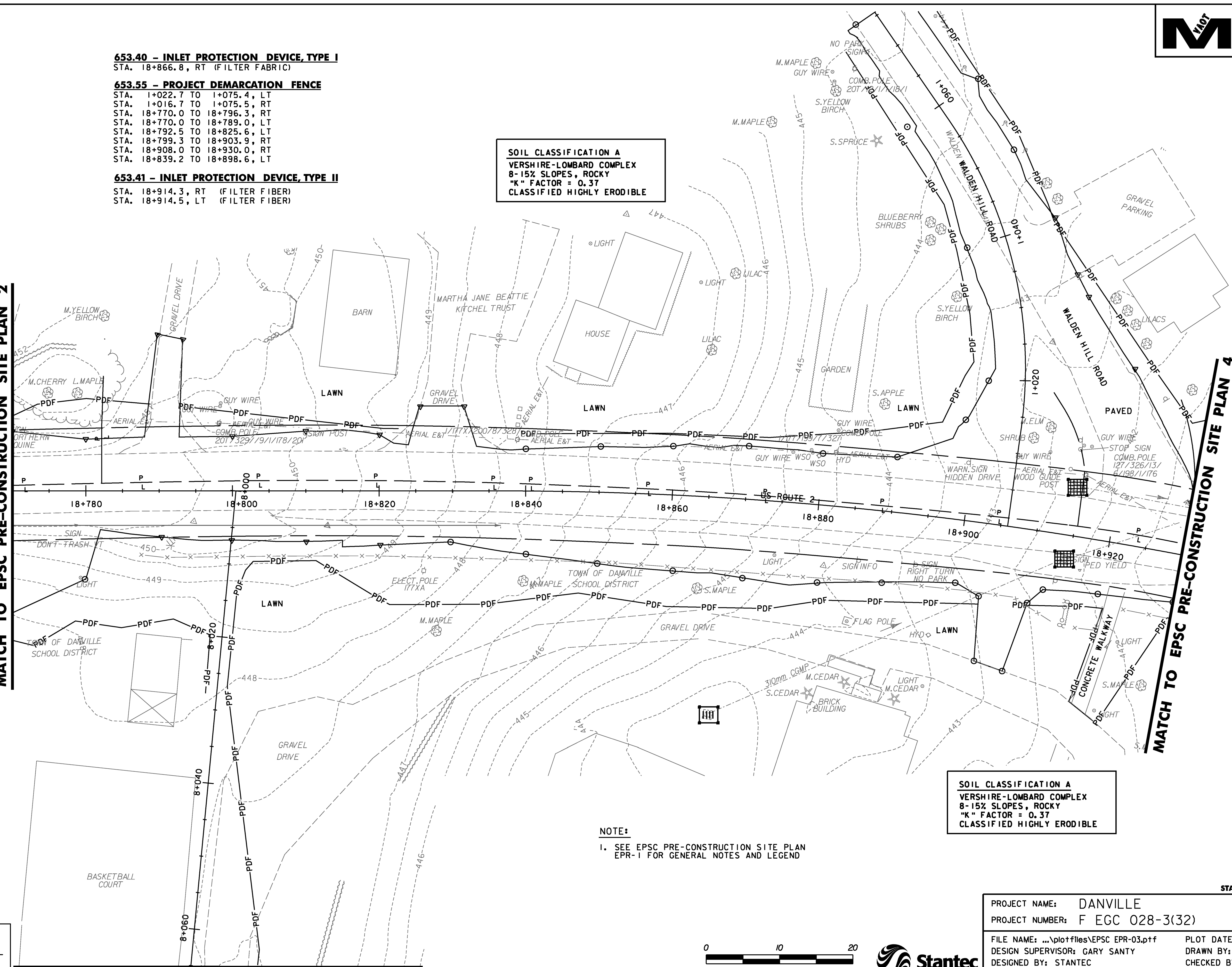
**SOIL CLASSIFICATION A**  
 VERSHIRE-LOMBARD COMPLEX  
 8-15% SLOPES, ROCKY  
 "K" FACTOR = 0.37  
 CLASSIFIED HIGHLY ERODIBLE

**SOIL CLASSIFICATION A**  
 VERSHIRE-LOMBARD COMPLEX  
 8-15% SLOPES, ROCKY  
 "K" FACTOR = 0.37  
 CLASSIFIED HIGHLY ERODIBLE

**NOTE:**  
 1. SEE EPSC PRE-CONSTRUCTION SITE PLAN EPR-1 FOR GENERAL NOTES AND LEGEND

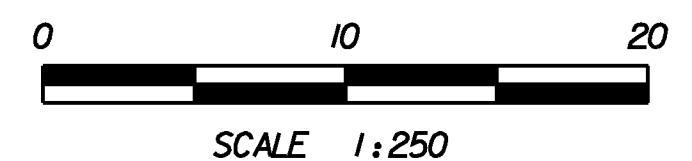
MATCH TO EPSC PRE-CONSTRUCTION SITE PLAN 2

MATCH TO EPSC PRE-CONSTRUCTION SITE PLAN 4



DATUM	
VERTICAL	NAVD88
HORIZONTAL	NAD83(92)

MATCH TO EPSC PRE-CONSTRUCTION SITE PLAN 11



PROJECT NAME:	DANVILLE	STA 18+770 TO 18+930
PROJECT NUMBER:	F EGC 028-3(32)	
FILE NAME:	...\\plotfiles\EPC EPR-03.prf	PLOT DATE: 1/18/2011
DESIGN SUPERVISOR:	GARY SANTY	DRAWN BY: STANTEC
DESIGNED BY:	STANTEC	CHECKED BY: STANTEC
EPSC PRE-CONSTRUCTION PLAN EPR-3		SHEET 109 OF 306

1/18/2011 10:54:50 PM v:\1953\active\1953\0033\_0092\highway\plotfiles\EPC EPR-03.prf