

653.55 - PROJECT DEMARCATION FENCE

STA. 18+614.0 TO 18+654.5, RT
 STA. 18+600.0 TO 18+645.0, LT
 STA. 18+648.9 TO 18+756.9, LT
 STA. 18+665.6 TO 18+749.6, RT
 STA. 18+758.0 TO 18+770.0, RT
 STA. 18+766.8 TO 18+770.0, LT

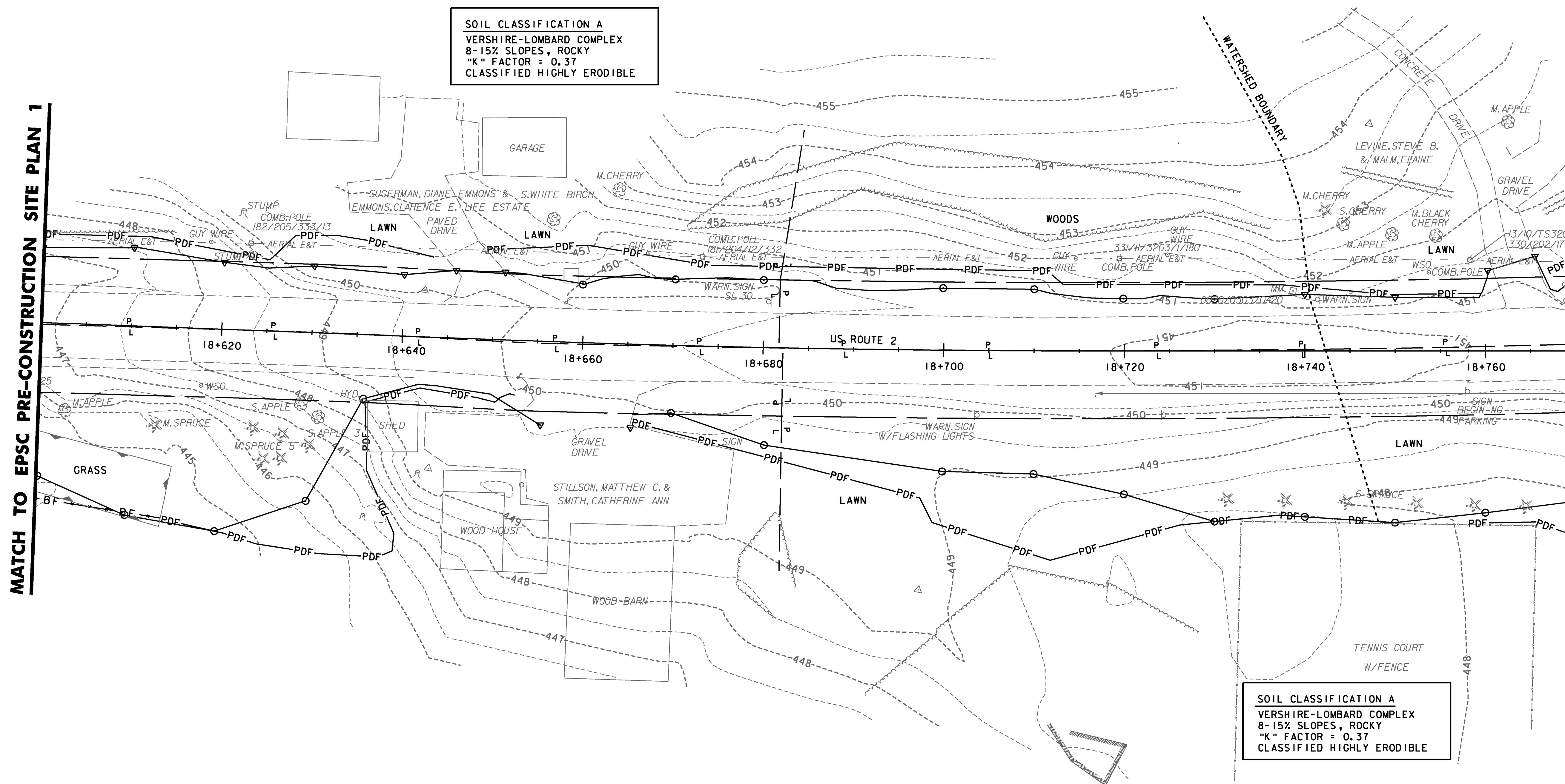
653.50 - BARRIER FENCE

STA. 18+600.0 TO 18+614, RT

SOIL CLASSIFICATION A
 VERSHIRE-LOMBARD COMPLEX
 8-15% SLOPES, ROCKY
 "K" FACTOR = 0.37
 CLASSIFIED HIGHLY ERODIBLE

MATCH TO EPSC PRE-CONSTRUCTION SITE PLAN 1

MATCH TO EPSC PRE-CONSTRUCTION SITE PLAN 3



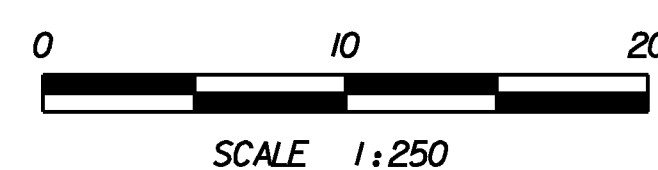
SOIL CLASSIFICATION A
 VERSHIRE-LOMBARD COMPLEX
 8-15% SLOPES, ROCKY
 "K" FACTOR = 0.37
 CLASSIFIED HIGHLY ERODIBLE

NOTE:

- SEE EPSC PRE-CONSTRUCTION SITE PLAN EPR-1 FOR GENERAL NOTES AND LEGEND

STA 18+600 TO 18+770

DATUM	
VERTICAL	NAVD88
HORIZONTAL	NAD83(92)



PROJECT NAME:	DANVILLE
PROJECT NUMBER:	F EGC 028-3(32)
FILE NAME:	...\\plotfiles\EPSC EPR-02.prf
DESIGN SUPERVISOR:	GARY SANTY
DESIGNED BY:	STANTEC
EPSC PRE-CONSTRUCTION PLAN	EPR-2
PLOT DATE:	1/18/2011
DRAWN BY:	STANTEC
CHECKED BY:	STANTEC
SHEET	108 OF 306

1/18/2011 10:54:48 PM v:\1953\active\1953\0033_0192\highway\plotfiles\EPSC EPR-02.prf