

**653.40 - INLET PROTECTION DEVICE, TYPE I**  
STA. 18+532.9, LT (FILTER FABRIC)

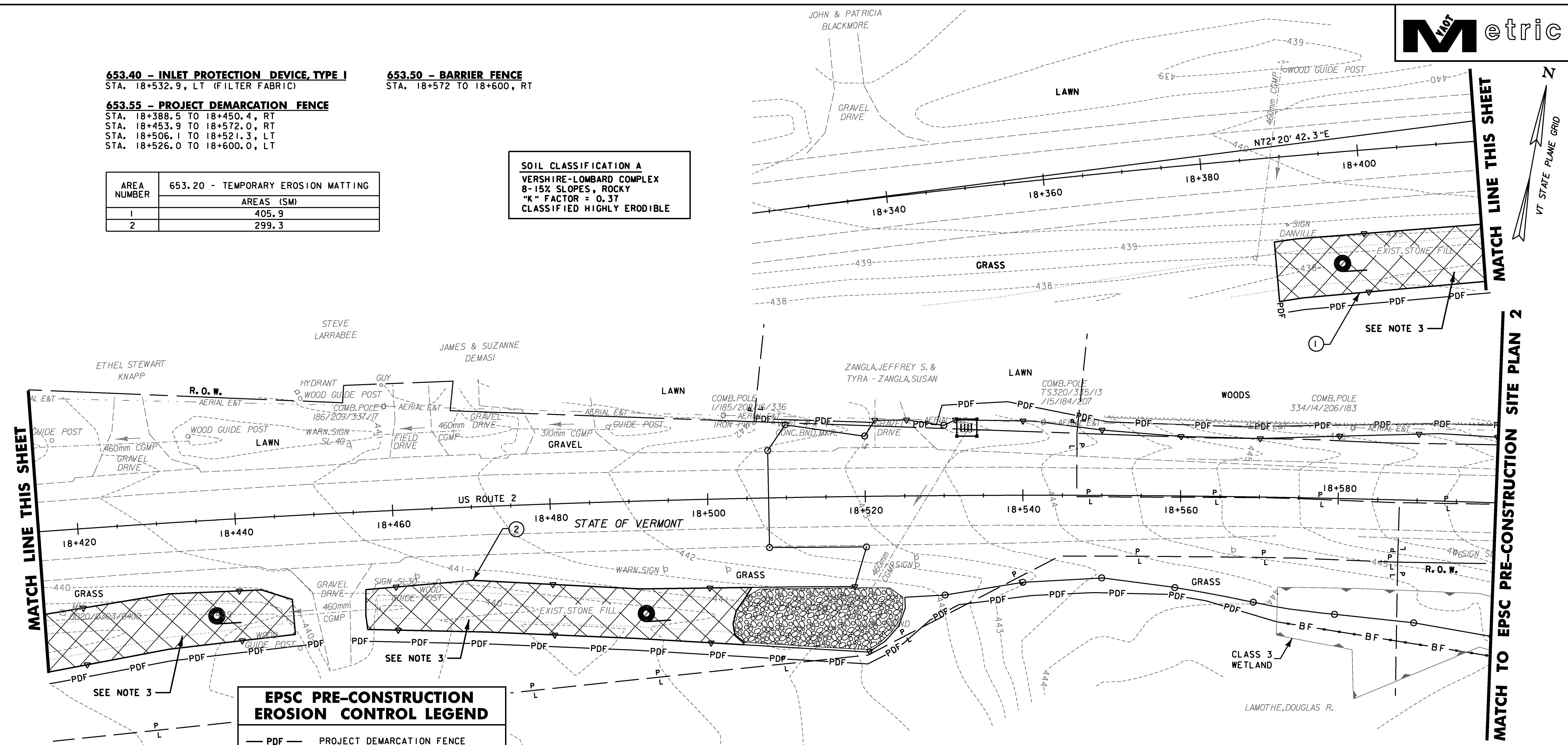
**653.50 - BARRIER FENCE**  
STA. 18+572 TO 18+600, RT

**653.55 - PROJECT DEMARCATION FENCE**

STA. 18+388.5 TO 18+450.4, RT  
STA. 18+453.9 TO 18+572.0, RT  
STA. 18+506.1 TO 18+521.3, LT  
STA. 18+526.0 TO 18+600.0, LT

AREA NUMBER	653.20 - TEMPORARY EROSION MATTING
	AREAS (SM)
1	405.9
2	299.3

**SOIL CLASSIFICATION A**  
VERSHIRE-LOMBARD COMPLEX  
8-15% SLOPES, ROCKY  
"K" FACTOR = 0.37  
CLASSIFIED HIGHLY ERODIBLE



**EPSC PRE-CONSTRUCTION EROSION CONTROL LEGEND**

- PDF — PROJECT DEMARCATION FENCE
- BF — BARRIER FENCE
- — — RIGHT OF WAY
- P — PROPERTY LINE
- L — LIMITS OF SOIL DISTURBANCE
- — — RIPARIAN BUFFER ZONE
- — — SOIL CLASSIFICATION BOUNDARY
- INLET PROTECTION-FILTER FIBER (PAID AS ITEM 653.41)
- INLET PROTECTION-FILTER FABRIC (PAID AS ITEM 653.40)
- ROLLED EROSION CONTROL PRODUCT (RECP) EROSION MATTING FOR SIDE SLOPES AND DITCHES
- STONE OUTLET PROTECTION
- — — WATERSHED BOUNDARY
- CLASS III WETLAND BOUNDARY
- SEDIMENT BASIN

- PRE-CONSTRUCTION NOTES:**
- ALL SEDIMENT CONTROL MEASURES SHALL BE INSTALLED PRIOR TO INITIATING PRINCIPAL EARTHWORK ACTIVITIES.
  - OPERATIONAL STORMWATER PRACTICES (DETENTION POND AND GRASS SWALES) SHALL BE PERMANENTLY STABILIZED BEFORE RECEIVING RUNOFF.
  - SEE CONSTRUCTION PLAN 1 AND STORMWATER MANAGEMENT DETAILS SWM-3 FOR CONSTRUCTION NOTES AND DETAILS OF VEGETATED TREATMENT SWALES.

**SOIL CLASSIFICATION A**  
VERSHIRE-LOMBARD COMPLEX  
8-15% SLOPES, ROCKY  
"K" FACTOR = 0.37  
CLASSIFIED HIGHLY ERODIBLE

**DATUM**  
VERTICAL NAVD88  
HORIZONTAL NAD83(92)



PROJECT NAME: DANVILLE	PLOT DATE: 1/18/2011
PROJECT NUMBER: F EGC 028-3(32)	DRAWN BY: STANTEC
FILE NAME: ...\\plotfiles\EPSC EPR-01.prf	CHECKED BY: STANTEC
DESIGN SUPERVISOR: GARY SANTY	SHEET 107 OF 306
DESIGNED BY: STANTEC	
<b>EPSC PRE-CONSTRUCTION PLAN EPR-1</b>	

STA 18+507.730 TO 18+600

1/18/2011 10:54:46 PM v:\1953\active\1953\0033\_0192\highway\plotfiles\EPSC EPR-01.prf