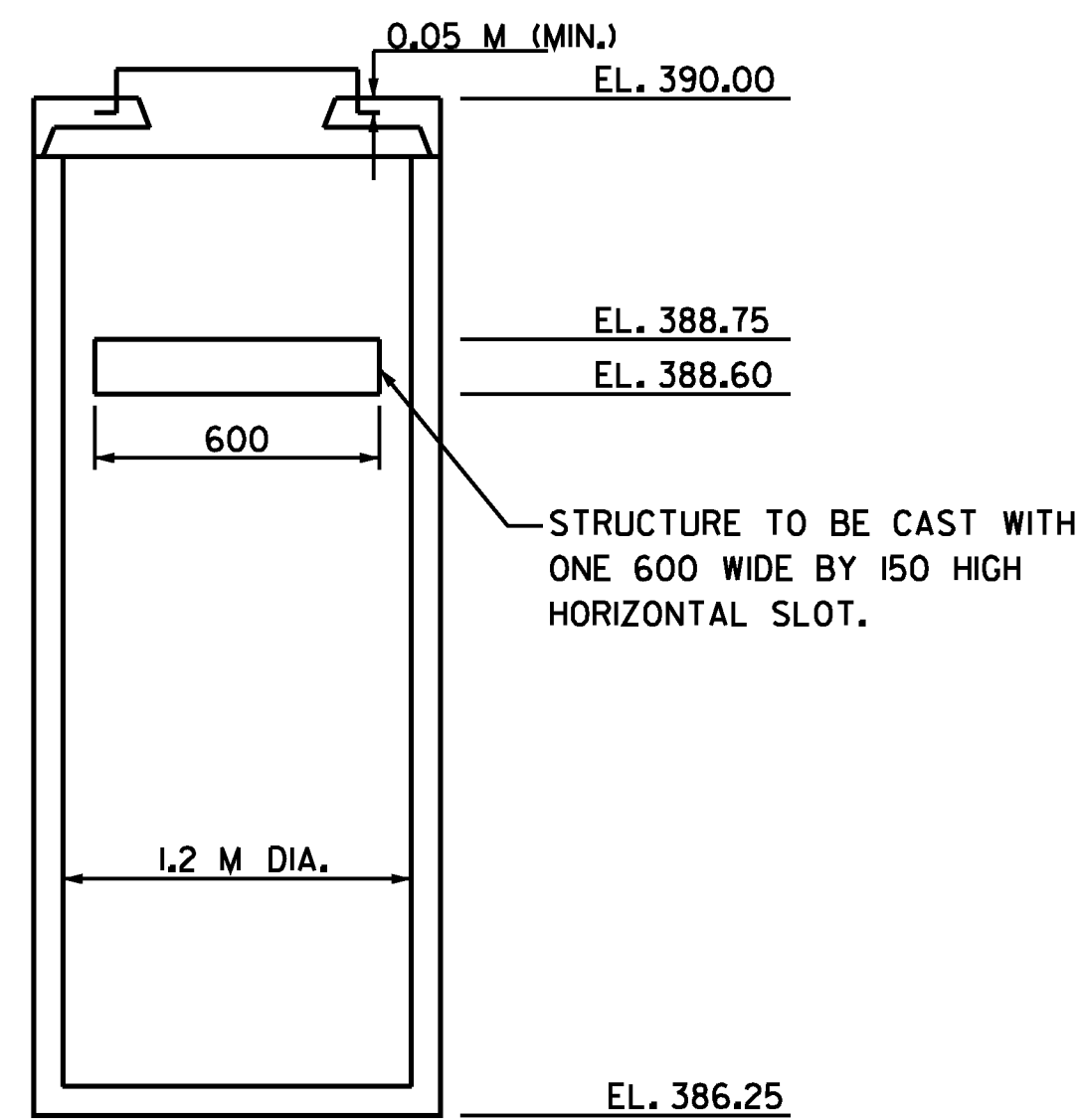


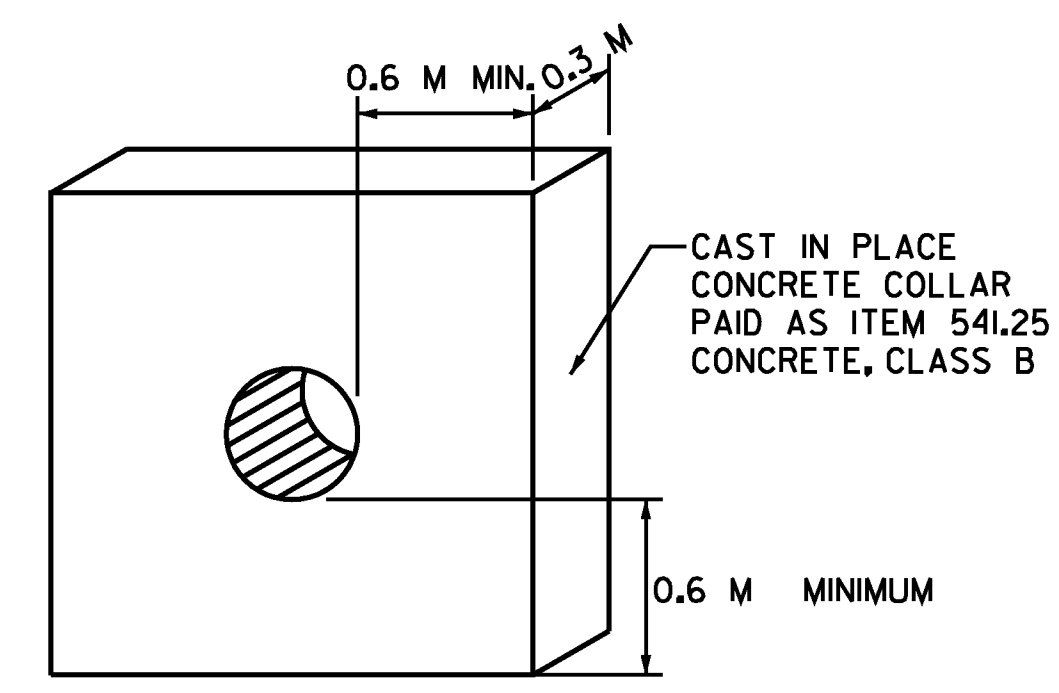
CATCH BASIN - WET POND OUTLET (TOP VIEW)

NOT TO SCALE



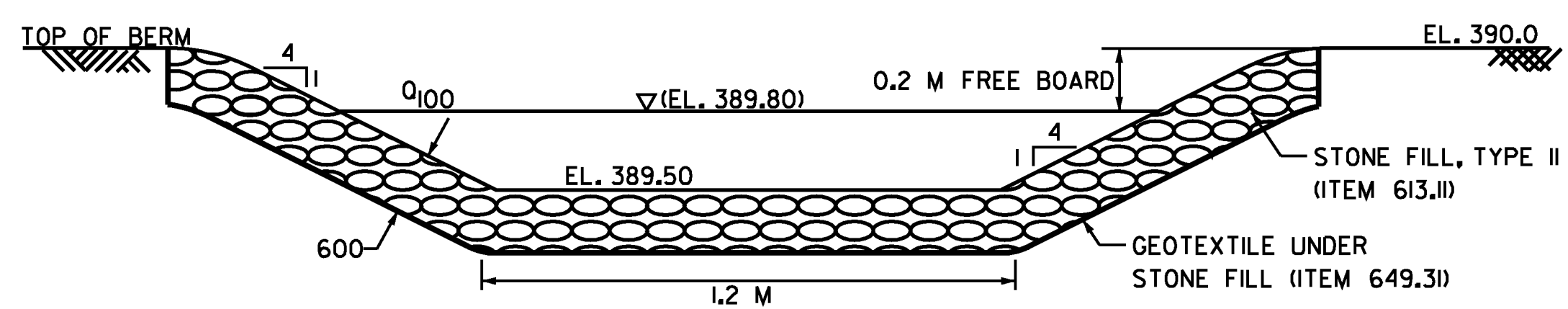
CATCH BASIN - WET POND OUTLET (FRONT VIEW)

NOT TO SCALE



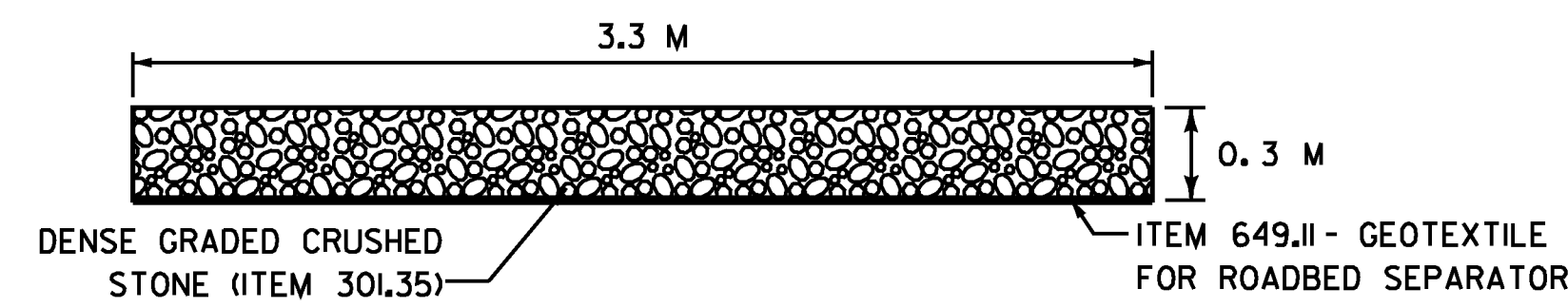
ANTI-SEEP COLLAR

NOT TO SCALE



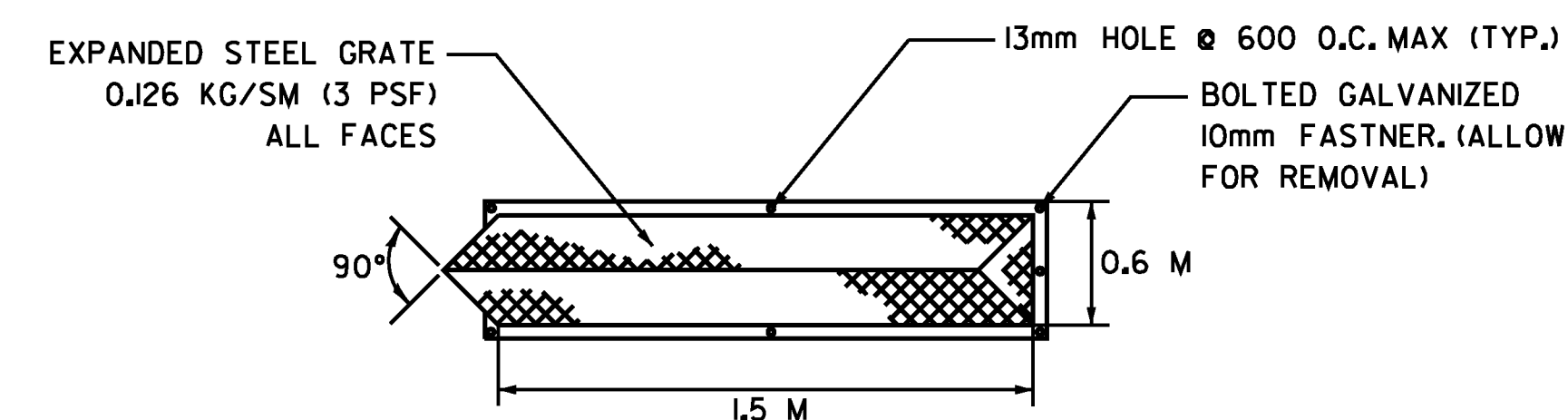
SECTION B-B AT SPILLWAY

NOT TO SCALE



MAINTENANCE ACCESS ROAD

NOT TO SCALE

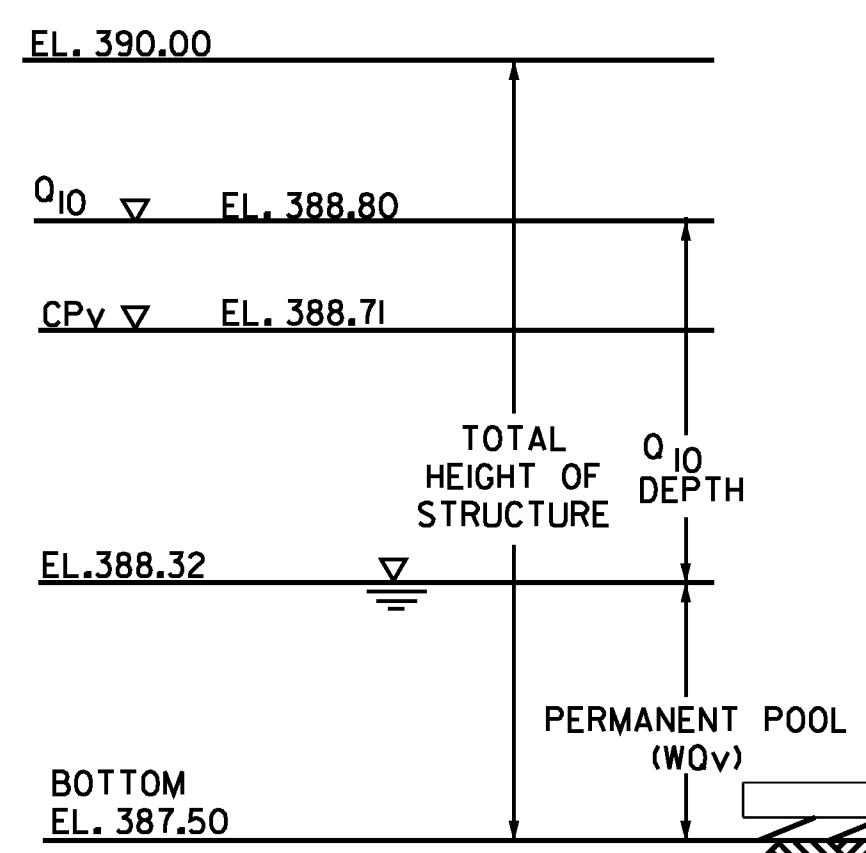


TRASH RACK

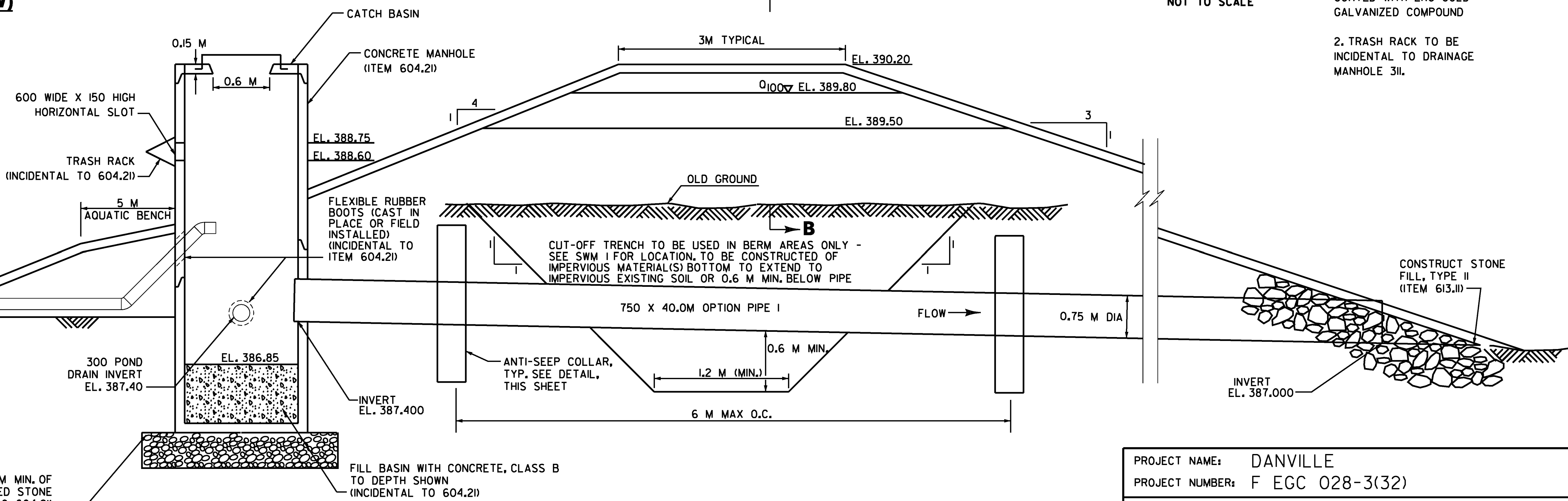
NOT TO SCALE

NOTE:
1. ALL SURFACES TO BE COATED WITH ERC COLD GALVANIZED COMPOUND

2. TRASH RACK TO BE INCIDENTAL TO DRAINAGE MANHOLE 311.



PVC SEWER PIPE (ITEM 628.35) (ELBOWS INCIDENTAL TO ITEM 628.35)



WET POND SECTION

NOT TO SCALE

PROJECT NAME:	DANVILLE	PLOT DATE:	1/18/2011
PROJECT NUMBER:	F EGC 028-3(32)	DESIGN SUPERVISOR:	GARY SANTY
FILE NAME:	...PlotFiles\060 swm-det1.pptf	DESIGNED BY:	STANTEC
		CHECKED BY:	STANTEC
		STORMWATER MAN. DETAILS SWM 2	SHEET 102 OF 306



1/18/2011 11:51:35 PM v:\1953\oc\file\0530033_0952\highway\PlotFiles\060 swm-det1.pptf