

**616.21 - VERTICAL GRANITE CURB**  
 STA. 19+450.0 TO 19+462.9, LT  
 STA. 19+450.0 TO 19+485.2, RT  
 STA. 19+492.0 TO 19+554.2, LT  
 STA. 19+493.6 TO 19+522.7, RT  
 STA. 19+534.3 TO 19+554.9, RT  
 STA. 19+566.8 TO 19+590.0, RT  
 STA. 19+570.2 TO 19+590.0, LT

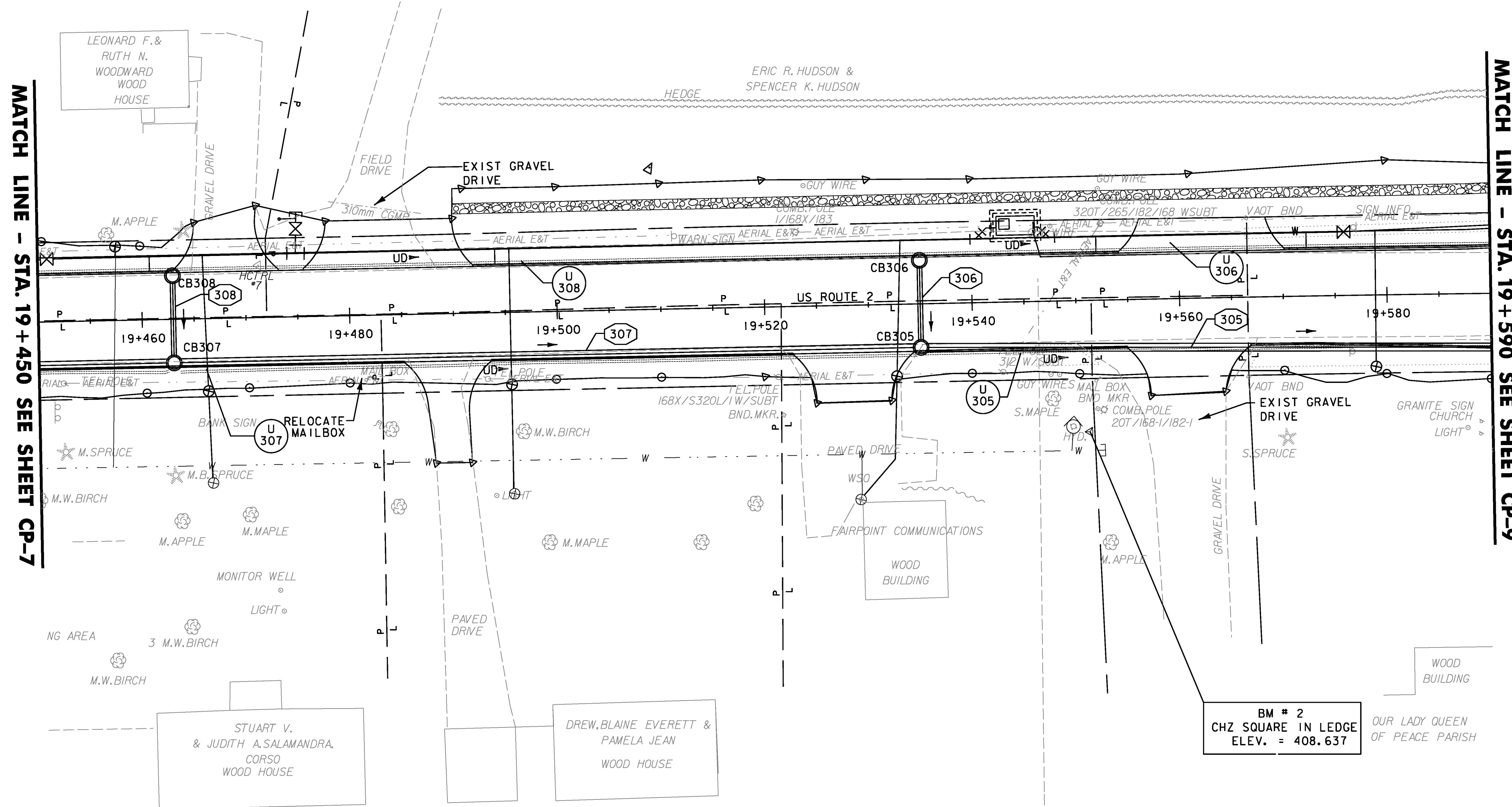
**617.10 - RELOCATE MAILBOX, SINGLE SUPPORT**  
 STA. 19+481.5, RT  
 STA. 19+552.0, RT

**618.11 - PORTLAND CEMENT CONCRETE SIDEWALK, 200mm**  
 STA. 19+475.6 TO 19+492.0, LT  
 STA. 19+554.2 TO 19+570.2, LT

**613.11 STONE FILL TYPE II-SEE NOTE 5**  
 STA. 19+490.0 TO 19+590, LT (STONE LINED SWALE)

**CONSTRUCT DRIVE-SEE NOTES 2&3**

STATION	LOCATION	TYPE	WIDTH	RAMP
19+468.1	LT	GRAV. RES.	5.8 m	TYPE 2, -
19+483.8	LT	GRAV. RES.	12.2 m	-, TYPE 2
19+489.8	RT	BIT. COM.	3.8 m	-
19+528.5	RT	BIT. COM.	7.2 m	-
19+560.7	RT	GRAV. RES.	7.2 m	-
19+562.1	LT	GRAV. RES.	12.2 m	TYPE 2



MATCH LINE - STA. 19+590 SEE SHEET CP-9

MATCH LINE - STA. 19+450 SEE SHEET CP-7

**NOTE:**

- SEE CONSTRUCTION PLAN CP-1 FOR DRAINAGE LEGEND.
- ALL DRIVES SHALL BE PAVED TO 3M BEHIND THE SIDEWALK OR AS SHOWN ON THE PLANS. SEE SHEET DRD-1 FOR CONST. DRIVE DETAILS.
- SEE VTRANS STD DRAWINGS C-2A AND C-2B FOR DRIVEWAY CROSSING DETAILS.
- SEE VTRANS STD DRAWINGS C-3A AND C-3B FOR SIDEWALK RAMP DETAILS.
- SEE DRAINAGE DETAIL SHEET DD-1 FOR STONE LINED SWALE DETAIL.
- AN ESTIMATED QUANTITY FOR ADJUSTING ELEVATION OF DRAINAGE CATCH BASINS AND MANHOLES HAS BEEN INCLUDED. THIS PAY ITEM SHALL ONLY BE USED FOR CB'S & MH'S INSTALLED IN AREAS THAT ARE TEMPORARILY PAVED TO MAINTAIN VEHICULAR TRAFFIC. ADJUSTMENT OF CB'S & MH'S IN LAWN AREAS OR OTHER AREAS THAT ARE OUTSIDE OF VEHICULAR TRAFFIC WILL BE PAID INCIDENTAL TO CATCH BASIN AND MANHOLE ITEMS.

**DRAINAGE STRUCTURES - SEE NOTE 6**

STRUCTURE NO.	CONSTRUCTION	STATION	COMMENTS
CB305	19+535.0, RT		1.5 ID PRCCB W/E GRATE
CB306	19+535.0, LT		PRCCB W/E GRATE
CB307	19+463.0, RT		1.5 ID PRCCB W/D GRATE
CB308	19+463.0, LT		PRCCB W/D GRATE

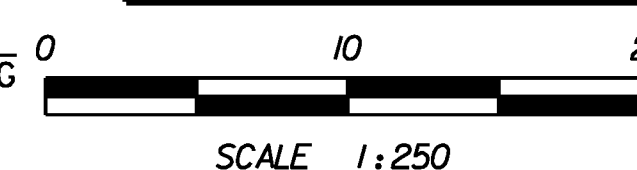
**DRAINAGE NOTES**

- U 305 CONST. @ 19+535.0 TO 19+605.0 RT. NEW 750mm x 68.7m PIPE OPTION 1
- U 306 CONST. @ 19+535.0 LT. TO RT. NEW 450mm x 7.2m PIPE OPTION 2
- U 307 CONST. @ 19+463.0 TO 19+535.0 RT. NEW 750mm x 70.8m PIPE OPTION 1
- U 308 CONST. @ 19+463.0 LT. TO RT. NEW 450mm x 7.2m PIPE OPTION 2

**UNDERDRAIN NOTES**

- U 307 CONST. @ 19+463.0 TO 19+535.0 RT. NEW 150mm x 72.0m UND. W/URBAN FLUSHING BASIN IN STRUCTURE #307
- U 308 CONST. @ 19+463.0 TO 19+535.0 LT. NEW 150mm x 72.0m UND. W/URBAN FLUSHING BASIN IN STRUCTURE #308
- U 305 CONST. @ 19+535.0 TO 19+605.0 RT. NEW 150mm x 70.0m UND. W/URBAN FLUSHING BASIN IN STRUCTURE #305
- U 306 CONST. @ 19+535.0 TO 19+605.0 LT. NEW 150mm x 70.0m UND. W/URBAN FLUSHING BASIN IN STRUCTURE #306

**REPLACEMENT SHEETS  
ISSUED 10/05/11**



**DATUM**

VERTICAL	NAVD88
HORIZONTAL	NAD83(92)

STA 19+450 TO 19+590

PROJECT NAME:	DANVILLE	FILE NAME:	...\\PlotFiles\033_0108.prf	PLLOT DATE:	10/4/2011
PROJECT NUMBER:	F EGC 028-3(32)	DESIGN SUPERVISOR:	GARY SANTY	DRAWN BY:	STANTEC
		DESIGNED BY:	STANTEC	CHECKED BY:	STANTEC
		<b>CONSTRUCTION PLAN CP-8</b>		SHEET	70 OF 306