

CONSTRUCT DRIVE - SEE NOTES 5 & 7

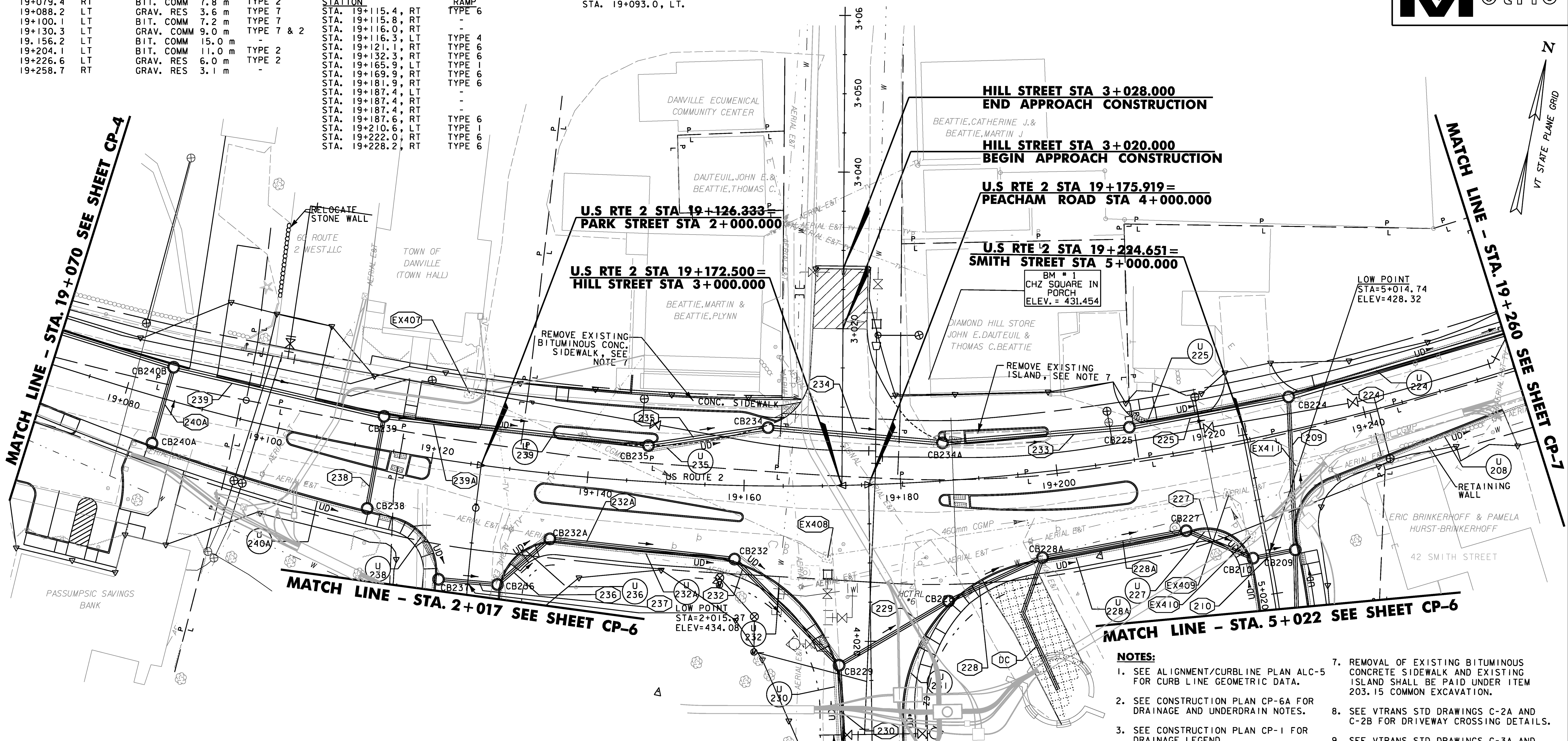
STATION	LOCATION	TYPE	WIDTH	RAMP
19+079.4	RT	BIT. COMM	7.8 m	TYPE 2
19+088.2	LT	GRAV. RES	3.6 m	TYPE 7
19+100.1	LT	BIT. COMM	7.2 m	TYPE 7
19+130.3	LT	GRAV. COMM	9.0 m	TYPE 7 & 2
19+156.2	LT	BIT. COMM	15.0 m	-
19+204.1	LT	BIT. COMM	11.0 m	TYPE 2
19+226.6	LT	GRAV. RES	6.0 m	TYPE 2
19+258.7	RT	GRAV. RES	3.1 m	-

618.30 - DETECTABLE WARNING SURFACES - SEE NOTE 8

STATION	LOCATION	RAMP
19+115.4	RT	TYPE 6
19+115.8	RT	-
19+116.0	RT	-
19+116.3	LT	TYPE 4
19+121.1	RT	TYPE 6
19+132.3	RT	TYPE 6
19+165.9	LT	TYPE 1
19+169.9	RT	TYPE 6
19+181.9	RT	TYPE 6
19+187.4	LT	-
19+187.4	RT	-
19+187.4	RT	-
19+187.6	RT	TYPE 6
19+210.6	LT	TYPE 1
19+222.0	RT	TYPE 6
19+228.2	RT	TYPE 6

617.10 RELOCATE MAIL BOX, SINGLE SUPPORT
STA. 19+093.0, LT.

616.41 - REMOVAL OF EXISTING CURB
STA. 19+184.5 TO 19+199.8, LT.



616.20 - GRANITE SLOPE EDGING
STA. 2+012.1 TO 2+017.0, LT
STA. 4+020.5 TO 4+035.0, RT
STA. 5+017.1 TO 5+022.0, RT

616.21 - VERTICAL GRANITE CURB
STA. 2+011.8 TO 2+017.0, RT PARK
STA. 4+014.0 TO 4+019.4, LT PEACHAM
STA. 5+017.1 TO 5+022.0, LT SMITH
STA. 19+070.0 TO 19+075.4, RT
STA. 19+070.0 TO 19+075.4, RT P. LOT
STA. 19+070.0 TO 19+078.7, RT P. LOT
STA. 19+070.0 TO 19+087.0, LT
STA. 19+081.0 TO 19+083.5, RT P. LOT
STA. 19+082.4 TO 19+083.5, RT P. LOT
STA. 19+082.5 TO 19+114.7, RT
STA. 19+101.3 TO 19+114.8, RT ISLAND

618.10 - PORTLAND CEMENT CONCRETE SIDEWALK, 125MM
STA. 19+070.0 TO 19+096.5, LT
STA. 19+103.8 TO 19+115.5, LT
STA. 19+116.2 TO 19+120.9, RT
STA. 19+117.0 TO 19+125.4, LT
STA. 19+117.0 TO 19+120.0, RT ISLAND
STA. 19+132.6 TO 19+169.9, RT
STA. 19+133.5 TO 19+160.0, RT ISLAND
STA. 19+135.0 TO 19+165.3, LT
STA. 19+135.0 TO 19+144.8, LT
STA. 19+135.0 TO 19+148.7, LT ISLAND
STA. 19+184.8 TO 19+186.2, RT ISLAND
STA. 19+185.2 TO 19+186.1, LT ISLAND
STA. 19+188.0 TO 19+222.2, RT
STA. 19+188.5 TO 19+209.8, RT ISLAND
STA. 19+188.6 TO 19+199.5, LT ISLAND
STA. 19+211.5 TO 19+220.9, LT
STA. 19+227.9 TO 19+256.9, RT
STA. 19+232.4 TO 19+260.0, LT

618.11 - PORTLAND CEMENT CONCRETE SIDEWALK, 200MM
STA. 19+096.5 TO 19+103.8, LT
STA. 19+125.6 TO 19+134.9, LT
STA. 19+075.5 TO 19+082.5, RT
STA. 4+021.2 TO 4+035.0, LT

900.620 - SPECIAL PROVISION (PORCH SUPPORT) - SEE NOTE 6
STA. 19+235.0 TO 19+250.0, 7.2m RT. 0.3m WIDE

900.645 - SPECIAL PROVISION (REMOVE AND RELOCATE STONE WALL)
STA. 19+086.0 TO 19+090.5, LT (REMOVE)
STA. 19+093.0, LT (RELOCATE)

900.675 - SPECIAL PROVISION (STAMPED CONCRETE ISLAND, 125mm)
STA. 19+135.0 TO 19+148.7, LT
STA. 19+185.2 TO 19+199.5, LT

- NOTES:**
- SEE ALIGNMENT/CURBLINE PLAN ALC-5 FOR CURB LINE GEOMETRIC DATA.
 - SEE CONSTRUCTION PLAN CP-6A FOR DRAINAGE AND UNDERDRAIN NOTES.
 - SEE CONSTRUCTION PLAN CP-1 FOR DRAINAGE LEGEND.
 - PROPOSED UNDERGROUND UTILITIES SHOWN IN GREY. SEE UTILITY PLANS FOR UNDERGROUND UTILITY DATA.
 - ALL DRIVES SHALL BE PAVED TO 3M BEHIND THE SIDEWALK, OR AS SHOWN ON THE PLANS. SEE SHEET DRD-1 FOR CONST. DRIVE DETAILS.
 - SEE STRUCTURAL DETAILS SD-1 FOR PORCH SUPPORT DETAILS.
 - REMOVAL OF EXISTING BITUMINOUS CONCRETE SIDEWALK AND EXISTING ISLAND SHALL BE PAID UNDER ITEM 203.15 COMMON EXCAVATION.
 - SEE VTRANS STD DRAWINGS C-2A AND C-2B FOR DRIVEWAY CROSSING DETAILS.
 - SEE VTRANS STD DRAWINGS C-3A AND C-3B FOR SIDEWALK RAMP DETAILS.
 - AN ESTIMATED QUANTITY FOR ADJUSTING ELEVATION OF DRAINAGE CATCH BASINS AND MANHOLES HAS BEEN INCLUDED. THIS PAY ITEM SHALL ONLY BE USED FOR CB'S & MH'S INSTALLED IN AREAS THAT ARE TEMPORARILY PAVED TO MAINTAIN VEHICULAR TRAFFIC. ADJUSTMENT OF CB'S & MH'S IN LAWN AREAS OR OTHER AREAS THAT ARE OUTSIDE OF VEHICULAR TRAFFIC WILL BE PAID INCIDENTAL TO CATCH BASIN AND MANHOLE ITEMS.

DATUM

VERTICAL	NAVD88
HORIZONTAL	NAD83(92)

210.10 - COLD PLANING, BITUMINOUS PAVEMENT
STA. 3+020.00 TO 3+028.00

**REPLACEMENT SHEETS
ISSUED 02/24/2012**



PROJECT NAME:	DANVILLE	STA 19+070 TO 19+260
PROJECT NUMBER:	F EGC 028-3(32)	
FILE NAME:	...PlotFiles\029 all05.prf	PLOT DATE: 2/24/2012
DESIGN SUPERVISOR:	GARY SANTY	DRAWN BY: STANTEC
DESIGNED BY:	STANTEC	CHECKED BY: STANTEC
CONSTRUCTION PLAN CP-5		SHEET 66 OF 306

2/24/2012 4:30:09 PM V:\953\cc\Five\9530033_0952\Revised Plans\PlotFiles\029 all05.prf