

203.28 - EXCAVATION OF SURFACES AND PAVEMENTS

STA. 1+005.0 TO 1+048.0, RT (WALDEN HILL RD)
STA. 18+922.0 RT. (EXIST SCHOOL WALK)

616.21 - VERTICAL GRANITE CURB

STA. 1+018.4 TO 1+040.0, LT*
STA. 1+020.0, RT TO 18+926.2, LT*
STA. 1+020.7 TO 1+030.0, RT*
STA. 18+770.0 TO 18+786.5, LT
STA. 18+770.0 TO 18+903.9, RT
STA. 18+794.5 TO 18+822.3, LT
STA. 18+835.2 TO 1+017.6, LT*
STA. 18+908.0 TO 18+926.2, RT
STA. 18+919.5 TO 18+925.8, LT & RT., ISLAND
STA. 18+927.8 TO 18+930.0, LT
STA. 18+927.8 TO 18+930.0, RT
STA. 18+928.2 TO 18+930.0, LT & RT., ISLAND

*PROVIDE CURB BREAK FOR DRAINAGE

620.55 - REMOVAL OF EXISTING FENCE

STA. 18+926.0 TO 18+928.0, RT
STA. 18+787.1 TO 18+913.7, RT
STA. 18+917.2 TO 18+920.5, RT

616.47 - BITUMINOUS CONCRETE GUTTERS AND TRAFFIC ISLANDS

STA. 1+017.5 TO 1+018.5, LT. 1m x 2m x 50mm
STA. 1+020.0 TO 1+021.0, RT. 1m x 2.5m x 50mm

618.10 - PORTLAND CEMENT CONCRETE SIDEWALK, 125MM

STA. 18+797.1 TO 18+930.0, RT
STA. 18+920.0 TO 18+928.0, RT, INDIV. WALK
STA. 18+926.2 TO 18+930.0, LT

CONSTRUCT DRIVE

STATION	LOCATION	TYPE	WIDTH	RAMP
1+036.6	RT WALDEN HILL	GRAV. RES.	8.3m	-
18+791.5	LT	GRAV. RES.	3.5m	-
18+828.7	LT	GRAV. COM.	7.2m	-
18+906.0	RT	GRAV. RES.	4.0m	TYPE 2

629.20 - ADJUST ELEVATION OF VALVE BOX

STA. 18+926.8, RT

DRAINAGE STRUCTURES - SEE NOTE 5

STRUCTURE NO.	CONSTRUCTION @ STATION	COMMENTS
CB247	18+912.5, RT.	1.8M PRCCB W/E GRATE
MH247A	18+913.7, LT.	MANHOLE W/COVER
CB248	18+915.0, LT.	PRCCB W/D GRATE
CB249	1+018.0, LT.	PRCCB W/E GRATE
CB251	18+885.0, LT.	PRCCB W/E GRATE
CB252	18+885.0, RT.	PRCCB W/E GRATE
CB253	18+835.0, RT.	PRCCB W/E GRATE
CB254	18+835.0, LT.	PRCCB W/E GRATE
CB255	18+786.0, RT.	PRCCB W/E GRATE
CB256	18+786.0, LT.	PRCCB W/E GRATE
CB257	1+021.0, RT.	PRCCB W/D GRATE

617.10 RELOCATE MAIL BOX, SINGLE SUPPORT

STA. 1+020.0, LT.

618.30 - DETECTABLE WARNING SURFACES

STATION	RAMP	TYPE
STA. 18+927.0, LT		TYPE 6
STA. 18+927.0, RT		TYPE 6

900.675 - SPECIAL PROVISION (STAMPED CONCRETE ISLAND, 125MM)

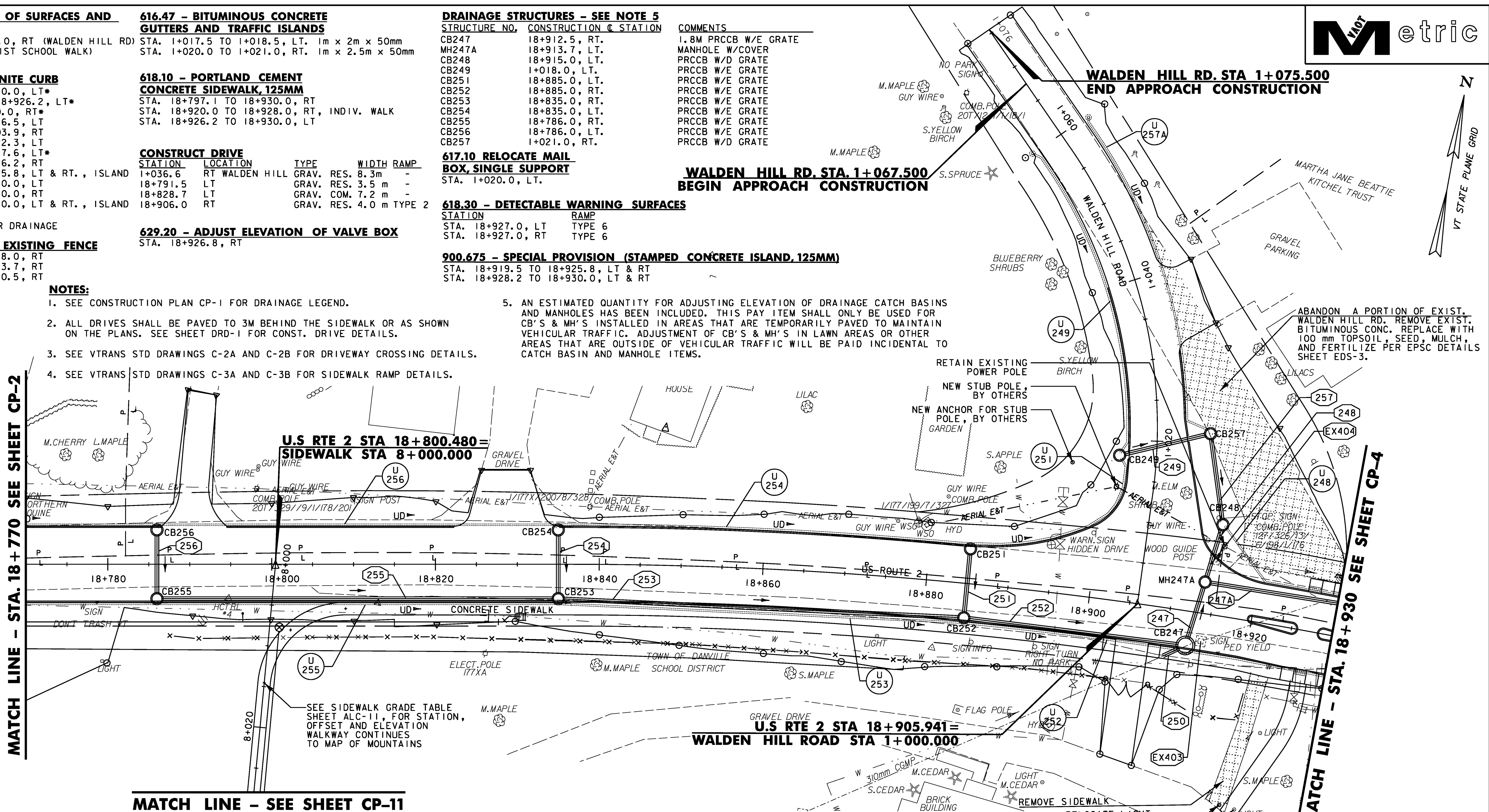
STA. 18+919.5 TO 18+925.8, LT & RT
STA. 18+928.2 TO 18+930.0, LT & RT

WALDEN HILL RD. STA. 1+067.500 BEGIN APPROACH CONSTRUCTION

WALDEN HILL RD. STA 1+075.500 END APPROACH CONSTRUCTION

MATCH LINE - STA. 18+770 SEE SHEET CP-2

MATCH LINE - STA. 18+930 SEE SHEET CP-4



NOTES:

- SEE CONSTRUCTION PLAN CP-1 FOR DRAINAGE LEGEND.
- ALL DRIVES SHALL BE PAVED TO 3M BEHIND THE SIDEWALK OR AS SHOWN ON THE PLANS. SEE SHEET DRD-1 FOR CONST. DRIVE DETAILS.
- SEE VTRANS STD DRAWINGS C-2A AND C-2B FOR DRIVEWAY CROSSING DETAILS.
- SEE VTRANS STD DRAWINGS C-3A AND C-3B FOR SIDEWALK RAMP DETAILS.
- AN ESTIMATED QUANTITY FOR ADJUSTING ELEVATION OF DRAINAGE CATCH BASINS AND MANHOLES HAS BEEN INCLUDED. THIS PAY ITEM SHALL ONLY BE USED FOR CB'S & MH'S INSTALLED IN AREAS THAT ARE TEMPORARILY PAVED TO MAINTAIN VEHICULAR TRAFFIC. ADJUSTMENT OF CB'S & MH'S IN LAWN AREAS OR OTHER AREAS THAT ARE OUTSIDE OF VEHICULAR TRAFFIC WILL BE PAID INCIDENTAL TO CATCH BASIN AND MANHOLE ITEMS.

U.S. RTE 2 STA 18+800.480 = SIDEWALK STA 8+000.000

U.S. RTE 2 STA 18+905.941 = WALDEN HILL ROAD STA 1+000.000

DRAINAGE NOTES

- (250) CONST. @ 18+910.0 TO 18+912.5 RT. NEW 300 mm x 2.4m PCOSP CONNECT TO EXISTING CGMP
- (247) CONST. @ 18+912.5 RT. TO 18+913.7 LT. NEW 450 mm x 6.9m PIPE OPTION 2
- (247A) CONST. @ 18+913.7 TO 18+935.0 LT. NEW 450 mm x 20.3m PIPE OPTION 1
- (248) CONST. @ 18+915.0 LT. TO 18+913.7 LT. NEW 450 mm x 10.8m PIPE OPTION 2
- (249) CONST. @ 1+018.0 LT. TO 1+021.0 RT. NEW 450 mm x 10.2m PIPE OPTION 2
- (251) CONST. @ 18+885.0 LT. TO RT. NEW 450 mm x 7.3m PIPE OPTION 2
- (252) CONST. @ 18+885.0 TO 18+912.5 RT. NEW 450 mm x 26.1m PIPE OPTION 1

UNDERDRAIN NOTES

- (U) CONST. @ 18+786.0 TO 18+835.0 RT. NEW 150 mm x 49.0m UND. W/URBAN FLUSHING BASIN IN STRUCTURE #255
- (U) CONST. @ 18+786.0 TO 18+835.0 LT. NEW 150 mm x 49.0m UND. W/URBAN FLUSHING BASIN IN STRUCTURE #256
- (U) CONST. @ 18+835.0 TO 18+885.0 RT. NEW 150 mm x 49.7m UND. W/URBAN FLUSHING BASIN IN STRUCTURE #253
- (U) CONST. @ 18+835.0 TO 18+885.0 LT. NEW 150 mm x 50.2m UND. W/URBAN FLUSHING BASIN IN STRUCTURE #254
- (U) CONST. @ 18+885.0 TO 18+936 RT. NEW 150 mm x 49.7m UND. W/URBAN FLUSHING BASIN IN STRUCTURE #252
- (U) CONST. @ 18+885.0 TO 1+018.0 LT. NEW 150 mm x 24.0m UND. W/URBAN FLUSHING BASIN IN STRUCTURE #251

- (U) CONST. @ 1+018.0 TO 1+060.0 LT. NEW 150 mm x 39.3m UND. W/RURAL FLUSHING BASIN @ 1+060.0 LT, CONST. @ +0.50% GRADE @ STA. 1+018.0 - STA. 1+037.9 LT.
- (U) CONST. @ 1+011.0 RT. TO 18+936.1 LT. NEW 150 mm x 23.7m UND. W/URBAN FLUSHING BASIN IN STRUCTURE #248
- (U) CONST. @ 1+021.0 TO 1+060.0 RT. NEW 150 mm x 42.7m UND. W/RURAL FLUSHING BASIN @ 1+060.0 RT, CONST. @ +0.50% GRADE @ STA. 1+021.0 - STA. 1+028.2 RT.

DATUM

VERTICAL	NAVD88
HORIZONTAL	NAD83(92)

REPLACEMENT SHEETS ISSUED 10/05/11



PROJECT NAME:	DANVILLE	STA 18+770 TO 18+930
PROJECT NUMBER:	F EGC 028-3(32)	
FILE NAME:	...PlotFiles\027 all03.pft	PLOT DATE: 10/4/2011
DESIGN SUPERVISOR:	GARY SANTY	DRAWN BY: STANTEC
DESIGNED BY:	STANTEC	CHECKED BY: STANTEC
CONSTRUCTION PLAN CP-3		SHEET 64 OF 306