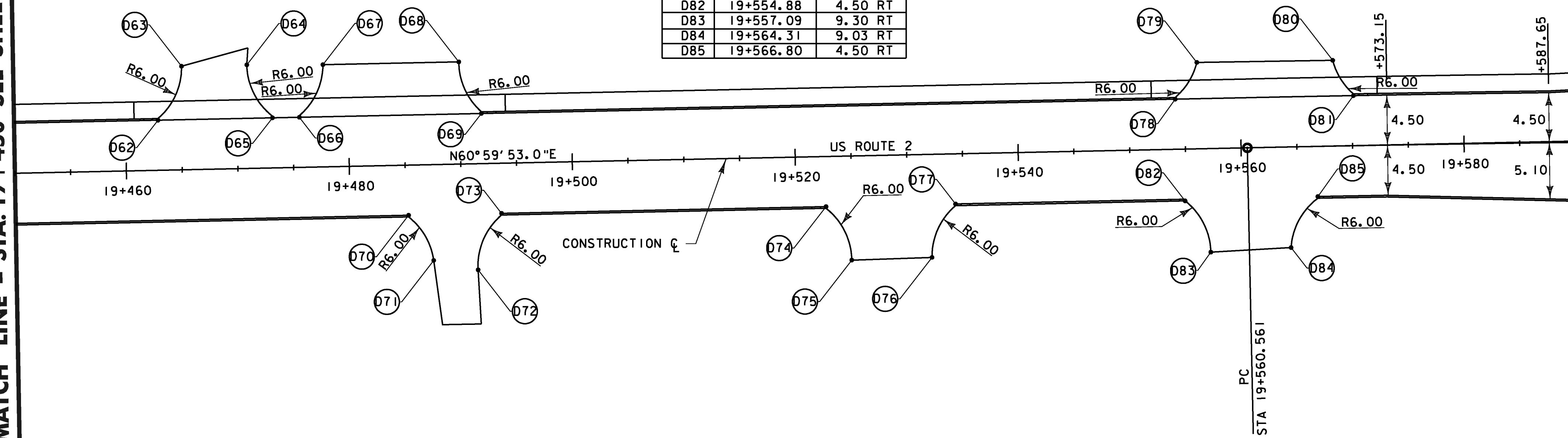


**DRIVE LAYOUT POINTS  
(TIE TO CONSTRUCTION  $\zeta$ )**

POINT	STATION	OFFSET
D62	19+462.93	4.50 LT
D63	19+465.14	9.30 LT
D64	19+470.99	9.30 LT
D65	19+473.20	4.50 LT
D66	19+475.61	4.50 LT
D67	19+477.82	9.18 LT
D68	19+490.01	9.18 LT
D69	19+491.95	4.50 LT
D70	19+485.22	4.50 RT
D71	19+487.39	8.60 RT
D72	19+491.36	9.53 RT
D73	19+493.56	4.50 RT
D74	19+522.67	4.50 RT
D75	19+524.88	9.35 RT
D76	19+532.08	9.25 RT
D77	19+534.29	4.50 RT
D78	19+554.18	4.50 LT
D79	19+556.19	7.76 LT
D80	19+568.36	7.70 LT
D81	19+570.15	4.50 LT
D82	19+554.88	4.50 RT
D83	19+557.09	9.30 RT
D84	19+564.31	9.03 RT
D85	19+566.80	4.50 RT

MATCH LINE - STA. 19+450 SEE SHEET ALC-7



MATCH LINE - STA. 19+590 SEE SHEET ALC-9

STA 19+450 TO 19+590

<b>DATUM</b>	
VERTICAL	NAVD88
HORIZONTAL	NAD83(92)



PROJECT NAME:	DANVILLE
PROJECT NUMBER:	F EGC 028-3(32)
FILE NAME:	...\\highway\plottiles\alc-08.ptf
DESIGN SUPERVISOR:	GARY SANTY
DESIGNED BY:	STANTEC
ALIGNMENT/CURBLINE PLAN	ALC-8
PLOT DATE:	1/18/2011
DRAWN BY:	STANTEC
CHECKED BY:	STANTEC
SHEET	56 OF 306

1/18/2011 11:50:04 PM v:\1953\active\1953\0033\_0092\highway\plottiles\alc-08.ptf