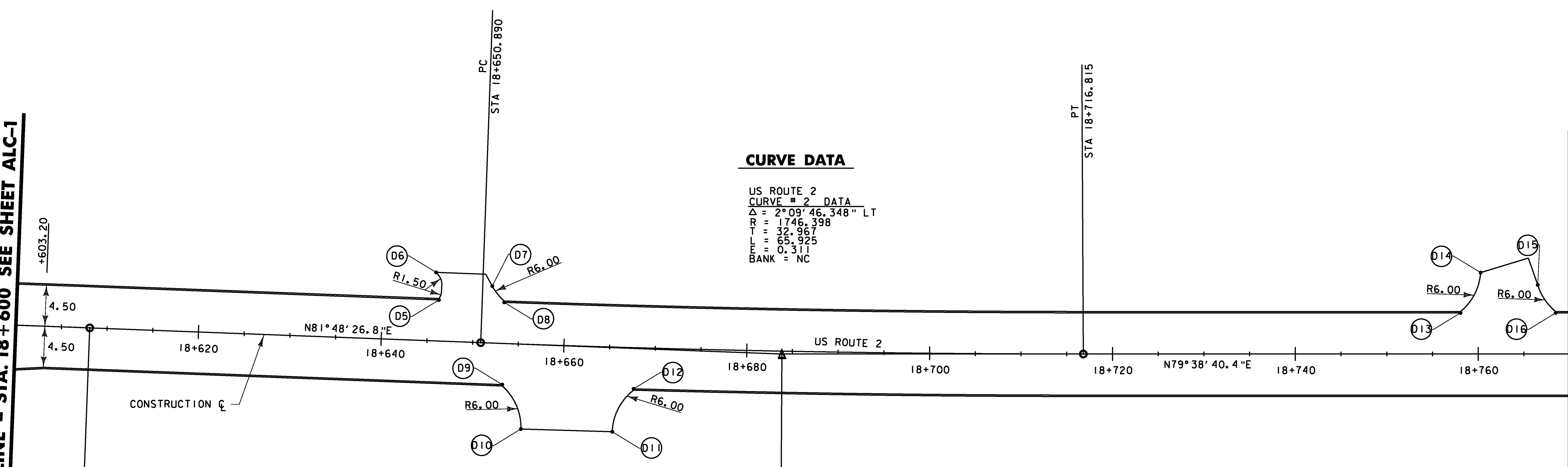


MATCH LINE - STA. 18+600 SEE SHEET ALC-1

MATCH LINE - STA. 18+770 SEE SHEET ALC-3

**CURVE DATA**

US ROUTE 2  
 CURVE # 2 DATA  
 $\Delta = 2^{\circ}09'46.348''$  LT  
 R = 1746.398  
 T = 32.967  
 L = 65.925  
 E = 0.311  
 BANK = NC



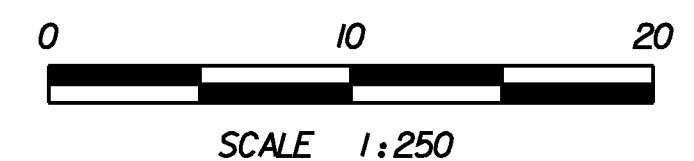
**DRIVE LAYOUT POINTS  
(TIE TO CONSTRUCTION CL)**

POINT	STATION	OFFSET
D5	18+646.15	4.50 LT
D6	18+645.73	7.50 LT
D7	18+651.93	6.23 LT
D8	18+653.30	4.50 LT
D9	18+653.42	4.50 RT
D10	18+655.61	9.29 RT
D11	18+665.56	9.26 RT
D12	18+667.75	4.50 RT
D13	18+758.07	4.50 LT
D14	18+760.27	8.91 LT
D15	18+765.52	7.57 LT
D16	18+768.48	4.50 LT

US RT2 CURVE #2  
 PT AHEAD 18+683.848  
 PI BACK 18+683.857

**DATUM**

VERTICAL	NAVD88
HORIZONTAL	NAD83(92)



PROJECT NAME:	DANVILLE
PROJECT NUMBER:	F EGC 028-3(32)
FILE NAME:	...highway\plotfiles\alc-02.ptf
DESIGN SUPERVISOR:	GARY SANTY
DESIGNED BY:	STANTEC
ALIGNMENT/CURBLINE PLAN	ALC-2
PLOT DATE:	1/18/2011
DRAWN BY:	STANTEC
CHECKED BY:	STANTEC
SHEET	50 OF 306

STA 18+600 TO 18+770

1/18/2011 11:50:05 PM v:\1953\active\1953\0033\_0092\highway\plotfiles\alc-02.ptf