



MATCH TO RIGHT-OF-WAY PLAN RPS-10

DREW, EVERETT W. & NORMA S. TRUSTEES OF THE EVERETT W. DREW AND NORMA S. DREW REVOCABLE TRUST

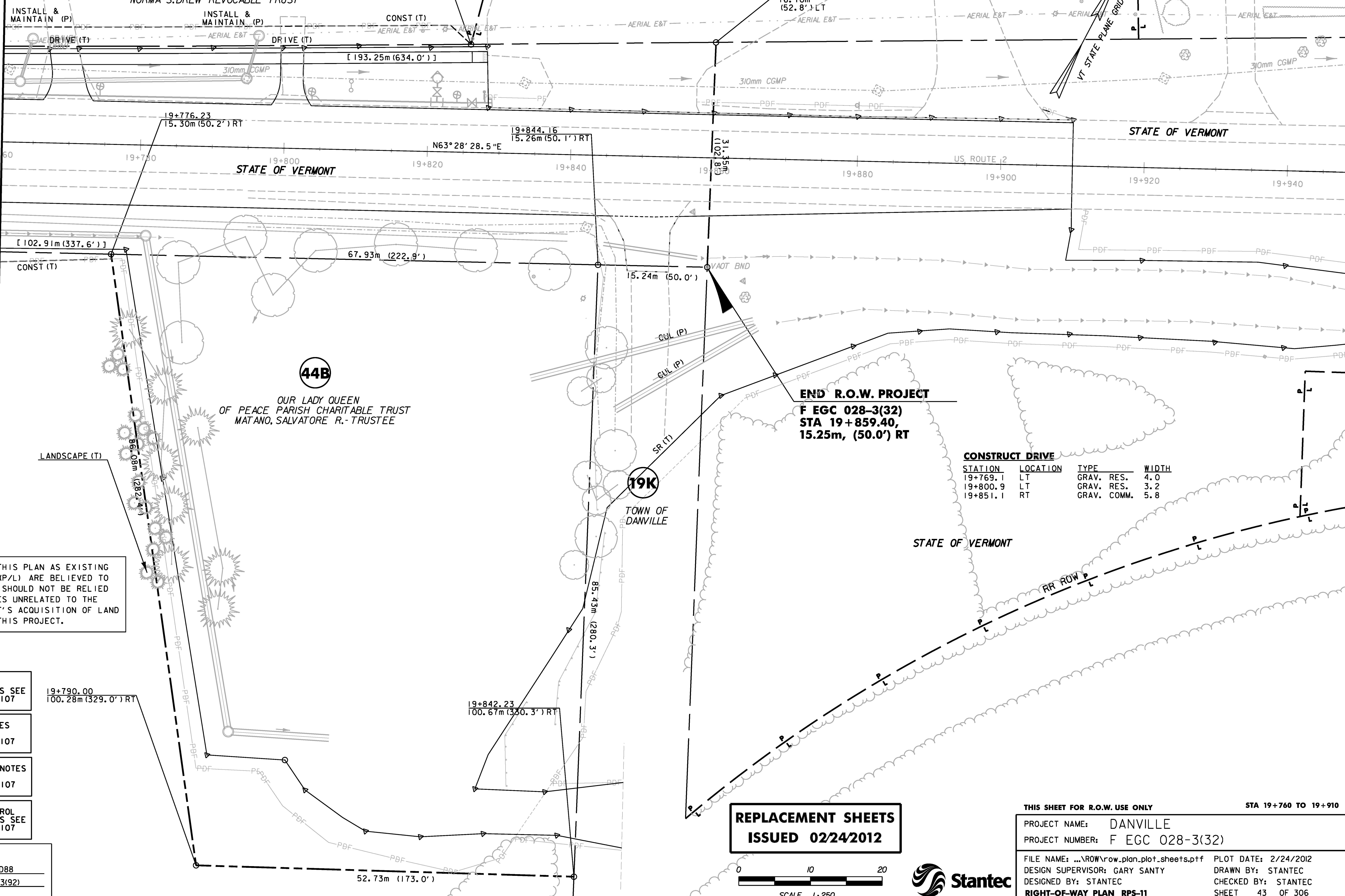
46

19+825.76
15.06m (49.4') LT

N/F CATHERINE J. BEATTIE TRUST

19+859.92
16.10m (52.8') LT

STATE OF VERMONT



OUR LADY QUEEN OF PEACE PARISH CHARITABLE TRUST
MATANO, SALVATORE R. TRUSTEE

44B

END R.O.W. PROJECT
F EGC 028-3(32)
STA 19+859.40,
15.25m, (50.0') RT

CONSTRUCT DRIVE

STATION	LOCATION	TYPE	WIDTH
19+769.1	LT	GRAV. RES.	4.0
19+800.9	LT	GRAV. RES.	3.2
19+851.1	RT	GRAV. COMM.	5.8

LINES SHOWN ON THIS PLAN AS EXISTING PROPERTY LINES (P/L) ARE BELIEVED TO BE ACCURATE BUT SHOULD NOT BE RELIED UPON FOR PURPOSES UNRELATED TO THE STATE OF VERMONT'S ACQUISITION OF LAND AND RIGHTS FOR THIS PROJECT.

FOR CONSTRUCTION NOTES AND DETAILS SEE ROW SHEET 33 OF 107

FOR DRAINAGE NOTES AND DETAILS SEE ROW SHEET 33 OF 107

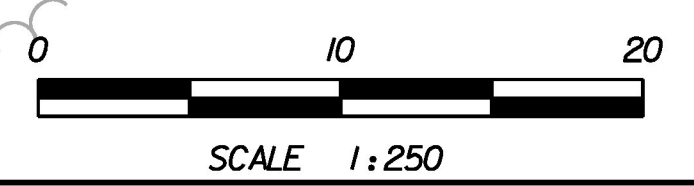
FOR LANDSCAPING NOTES AND DETAILS SEE ROW SHEET 55 OF 107

FOR EROSION CONTROL NOTES AND DETAILS SEE ROW SHEET 44 OF 107

DATUM

VERTICAL	NAVD88
HORIZONTAL	NAD83(92)

REPLACEMENT SHEETS
ISSUED 02/24/2012



THIS SHEET FOR R.O.W. USE ONLY STA 19+760 TO 19+910

PROJECT NAME:	DANVILLE
PROJECT NUMBER:	F EGC 028-3(32)
FILE NAME: ...\\ROW\row_plan_plot_sheets.ptf	PLOT DATE: 2/24/2012
DESIGN SUPERVISOR: GARY SANTY	DRAWN BY: STANTEC
DESIGNED BY: STANTEC	CHECKED BY: STANTEC
RIGHT-OF-WAY PLAN RPS-11	SHEET 43 OF 306

2/24/2012 4:04:44 PM V:\1953\oct1ve\19530033_0092\Highway\PlotFiles\ROW\row_plan_plot_sheets16.pptf