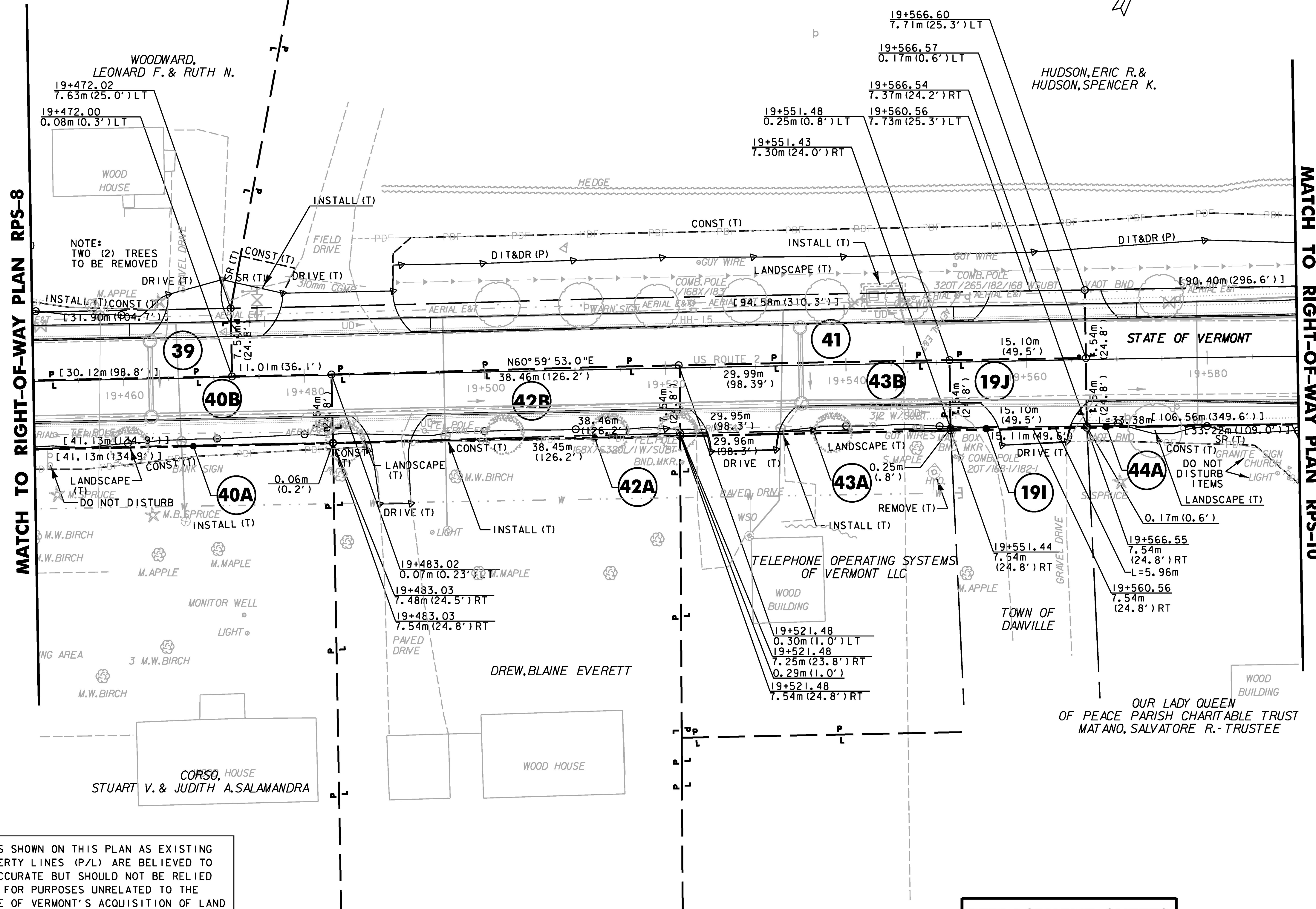
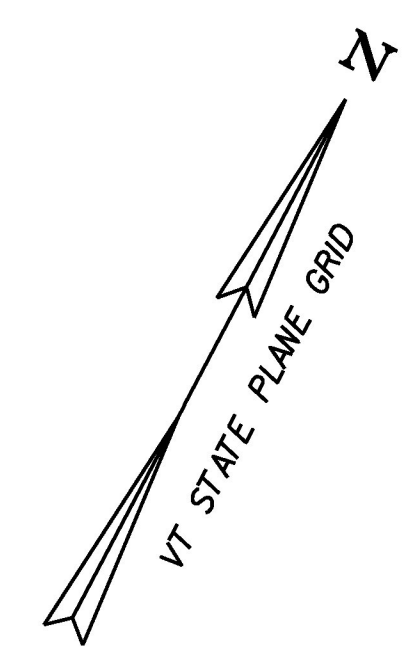


CONSTRUCT DRIVE			
STATION	LOCATION	TYPE	WIDTH
19+468.1	LT	GRAV. RES.	5.8
19+483.8	LT	GRAV. RES.	12.2
19+489.8	RT	BIT. COM.	3.8
19+528.5	RT	BIT. COM.	7.2
19+560.7	RT	GRAV. RES.	7.2
19+562.1	LT	GRAV. RES.	12.2



MATCH TO RIGHT-OF-WAY PLAN RPS-8

MATCH TO RIGHT-OF-WAY PLAN RPS-10

LINES SHOWN ON THIS PLAN AS EXISTING PROPERTY LINES (P/L) ARE BELIEVED TO BE ACCURATE BUT SHOULD NOT BE RELIED UPON FOR PURPOSES UNRELATED TO THE STATE OF VERMONT'S ACQUISITION OF LAND AND RIGHTS FOR THIS PROJECT.

DATUM	
VERTICAL	NAVD88
HORIZONTAL	NAD83(92)

FOR EROSION CONTROL NOTES AND DETAILS SEE ROW SHEET 42 OF 107

FOR LANDSCAPING NOTES AND DETAILS SEE ROW SHEET 53 OF 107

FOR DRAINAGE NOTES AND DETAILS SEE ROW SHEET 31 OF 107

FOR CONSTRUCTION NOTES AND DETAILS SEE ROW SHEET 31 OF 107

REPLACEMENT SHEETS
ISSUED 02/24/2012



THIS SHEET FOR R.O.W. USE ONLY STA 19+450 TO 19+590

PROJECT NAME: DANVILLE
PROJECT NUMBER: F EGC 028-3(32)

FILE NAME: ...\\ROW\row_plan_plot_sheets.pptf PLOT DATE: 2/24/2012
DESIGN SUPERVISOR: GARY SANTY DRAWN BY: STANTEC
DESIGNED BY: STANTEC CHECKED BY: STANTEC
RIGHT-OF-WAY PLAN RPS-9 SHEET 41 OF 306

2/24/2012 4:04:43 PM V:\1953\octive\19530033_0092\Highway\1953\row_plan_plot_sheets.pptf