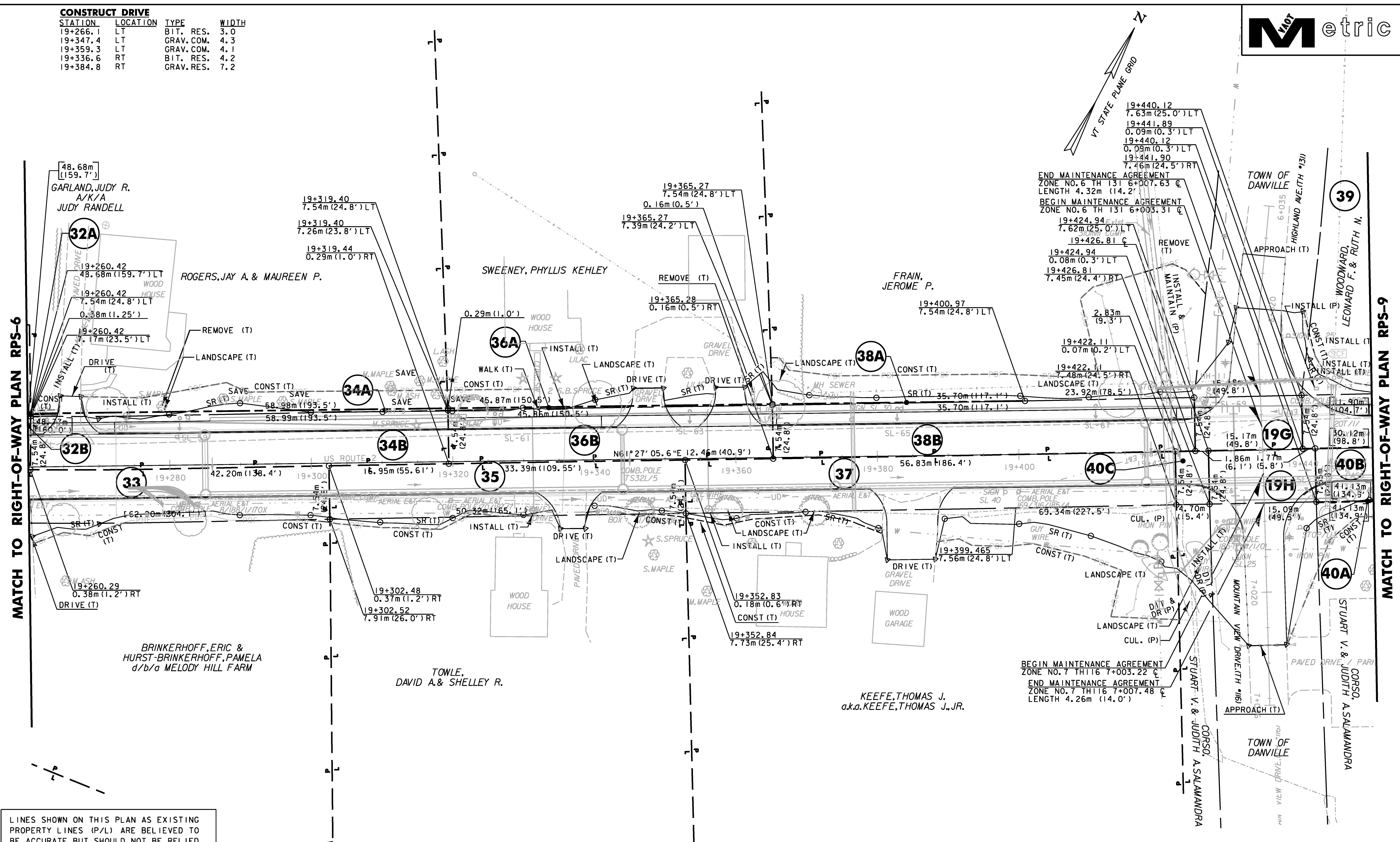




STATION	LOCATION	TYPE	WIDTH
19+266.1	LT	BIT. RES.	3.0
19+347.4	LT	GRAV. COM.	4.3
19+359.3	LT	GRAV. COM.	4.1
19+336.6	RT	BIT. RES.	4.2
19+384.8	RT	GRAV. RES.	7.2



LINES SHOWN ON THIS PLAN AS EXISTING PROPERTY LINES (P/L) ARE BELIEVED TO BE ACCURATE BUT SHOULD NOT BE RELIED UPON FOR PURPOSES UNRELATED TO THE STATE OF VERMONT'S ACQUISITION OF LAND AND RIGHTS FOR THIS PROJECT.

DATUM	
VERTICAL	NAVD88
HORIZONTAL	NAD83(92)

FOR EROSION CONTROL NOTES AND DETAILS SEE ROW SHEET 41 OF 107

FOR LANDSCAPING NOTES AND DETAILS SEE ROW SHEET 52 OF 107

FOR DRAINAGE NOTES AND DETAILS SEE ROW SHEET 30 OF 107

FOR CONSTRUCTION NOTES AND DETAILS SEE ROW SHEET 30 OF 107

REPLACEMENT SHEETS
ISSUED 02/24/2012



THIS SHEET FOR R.O.W. USE ONLY		STA 19+260 TO 19+450
PROJECT NAME:	DANVILLE	
PROJECT NUMBER:	F EGC 028-3(32)	
FILE NAME: ...ROW\row_plan_plot_sheets.ptf	PLOT DATE: 2/24/2012	
DESIGN SUPERVISOR: GARY SANTY	DRAWN BY: STANTEC	
DESIGNED BY: STANTEC	CHECKED BY: STANTEC	
RIGHT-OF-WAY PLAN RPS-8		SHEET 40 OF 306