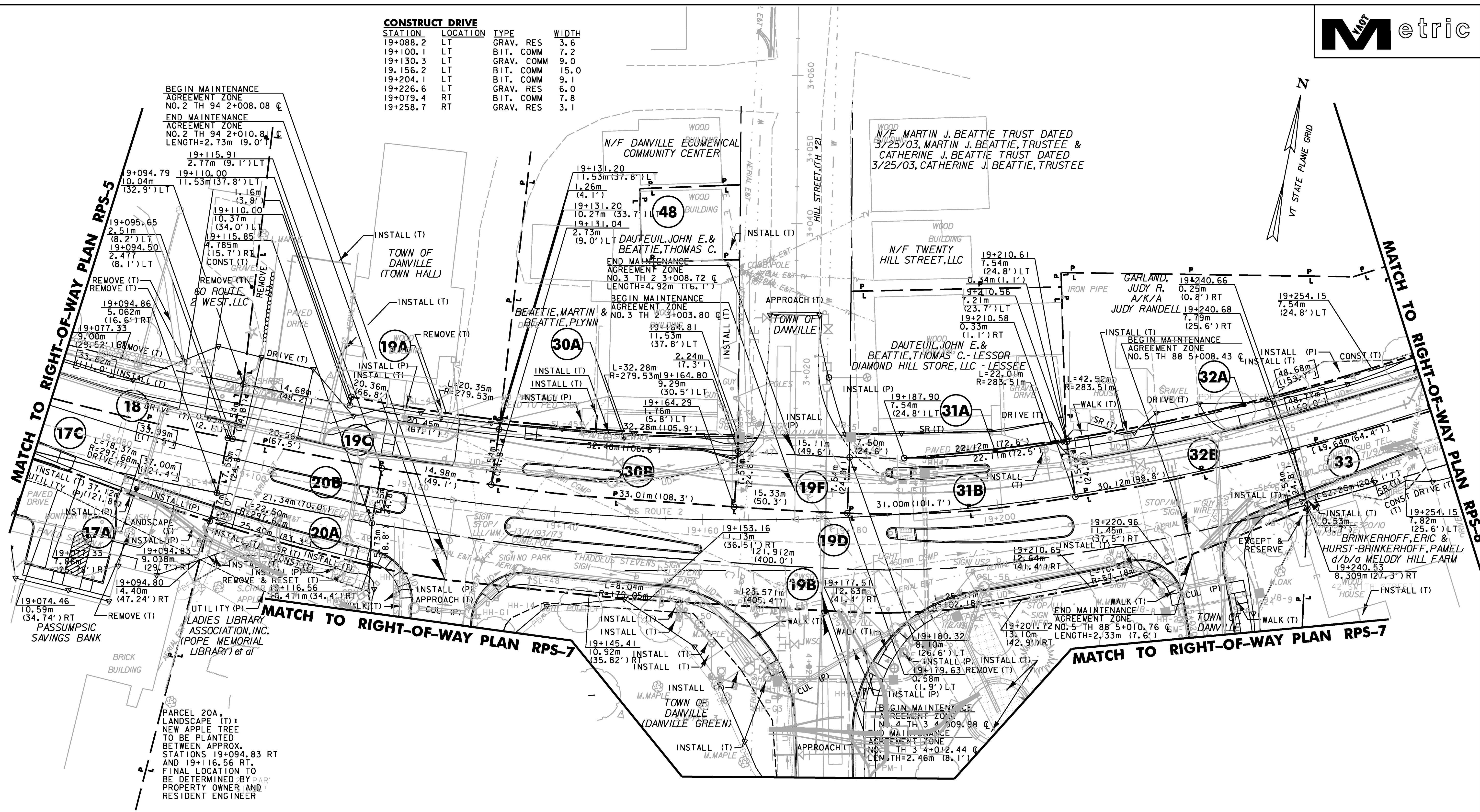


CONSTRUCT DRIVE			
STATION	LOCATION	TYPE	WIDTH
19+088.2	LT	GRAV. RES	3.6
19+100.1	LT	BIT. COMM	7.2
19+130.3	LT	GRAV. COMM	9.0
19+156.2	LT	BIT. COMM	15.0
19+204.1	LT	BIT. COMM	9.1
19+226.6	LT	GRAV. RES	6.0
19+079.4	RT	BIT. COMM	7.8
19+258.7	RT	GRAV. RES	3.1



LINES SHOWN ON THIS PLAN AS EXISTING PROPERTY LINES (P/L) ARE BELIEVED TO BE ACCURATE BUT SHOULD NOT BE RELIED UPON FOR PURPOSES UNRELATED TO THE STATE OF VERMONT'S ACQUISITION OF LAND AND RIGHTS FOR THIS PROJECT.

**REPLACEMENT SHEETS**  
ISSUED 02/24/2012

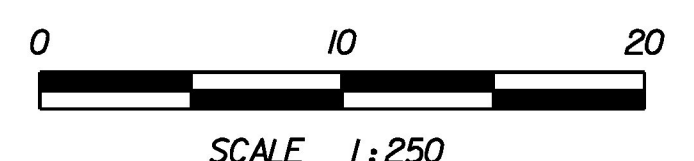
DATUM	
VERTICAL	NAVD88
HORIZONTAL	NAD83(92)

FOR EROSION CONTROL NOTES AND DETAILS SEE ROW SHEET 39 OF 107

FOR LANDSCAPING NOTES AND DETAILS SEE ROW SHEET 50 OF 107

FOR DRAINAGE NOTES AND DETAILS SEE ROW SHEET 27 OF 107

FOR CONSTRUCTION NOTES AND DETAILS SEE ROW SHEET 27 OF 107



THIS SHEET FOR R.O.W. USE ONLY		STA 19+070 TO 19+260
PROJECT NAME:	DANVILLE	
PROJECT NUMBER:	F EGC 028-3(32)	
FILE NAME:	...ROW\row_plan_plot_sheets.pptf	PLOT DATE: 2/24/2012
DESIGN SUPERVISOR:	GARY SANTY	DRAWN BY: STANTEC
DESIGNED BY:	STANTEC	CHECKED BY: STANTEC
RIGHT-OF-WAY PLAN RPS-6		SHEET 38 OF 306

2/24/2012 4:04:39 PM V:\1953\octive\9530033\_0092\Highway\Files\ROW\row\_plan\_plot\_sheets.pptf