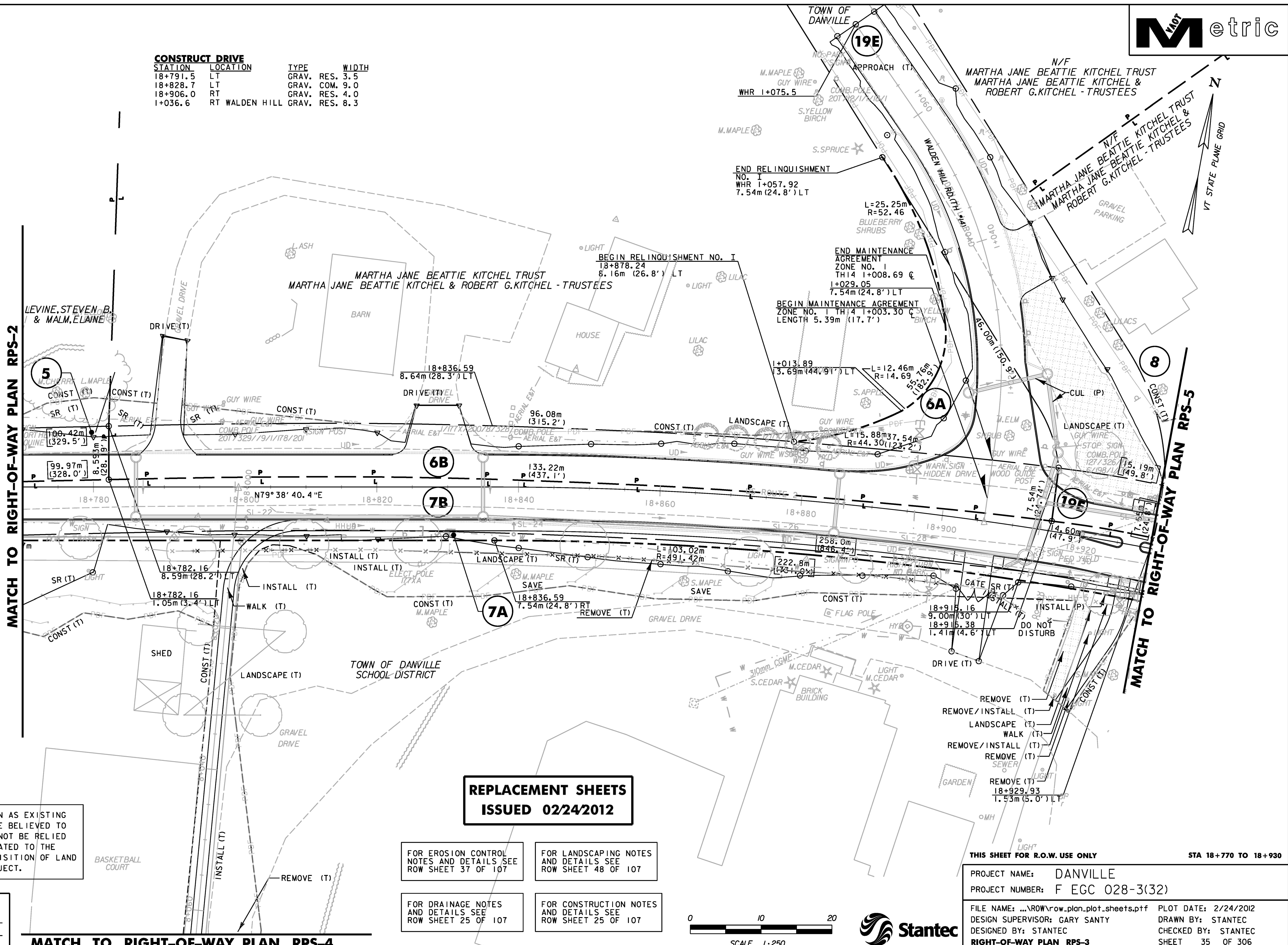


STATION	LOCATION	TYPE	WIDTH
18+791.5	LT	GRAV. RES.	3.5
18+828.7	LT	GRAV. COM.	9.0
18+906.0	RT	GRAV. RES.	4.0
1+036.6	RT WALDEN HILL	GRAV. RES.	8.3



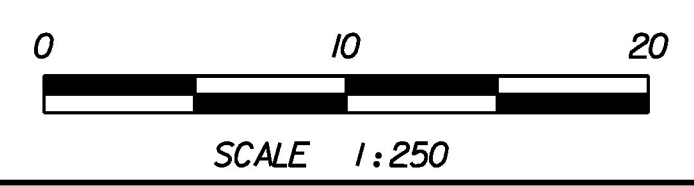
MATCH TO RIGHT-OF-WAY PLAN RPS-2

MATCH TO RIGHT-OF-WAY PLAN RPS-5

MATCH TO RIGHT-OF-WAY PLAN RPS-4

**REPLACEMENT SHEETS
ISSUED 02/24/2012**

- FOR EROSION CONTROL NOTES AND DETAILS SEE ROW SHEET 37 OF 107
- FOR LANDSCAPING NOTES AND DETAILS SEE ROW SHEET 48 OF 107
- FOR DRAINAGE NOTES AND DETAILS SEE ROW SHEET 25 OF 107
- FOR CONSTRUCTION NOTES AND DETAILS SEE ROW SHEET 25 OF 107



LINES SHOWN ON THIS PLAN AS EXISTING PROPERTY LINES (P/L) ARE BELIEVED TO BE ACCURATE BUT SHOULD NOT BE RELIED UPON FOR PURPOSES UNRELATED TO THE STATE OF VERMONT'S ACQUISITION OF LAND AND RIGHTS FOR THIS PROJECT.

DATUM	
VERTICAL	NAVD88
HORIZONTAL	NAD83(92)

THIS SHEET FOR R.O.W. USE ONLY		STA 18+770 TO 18+930
PROJECT NAME:	DANVILLE	
PROJECT NUMBER:	F EGC 028-3(32)	
FILE NAME:	...\\ROW\row_plan.plot.sheets.ptf	PLOT DATE: 2/24/2012
DESIGN SUPERVISOR:	GARY SANTY	DRAWN BY: STANTEC
DESIGNED BY:	STANTEC	CHECKED BY: STANTEC
RIGHT-OF-WAY PLAN RPS-3		SHEET 35 OF 306

2/24/2012 4:04:37 PM V:\953\octive\9530033_0092\Highway\10\Files\ROW\row_plan_plot_sheets.ptf