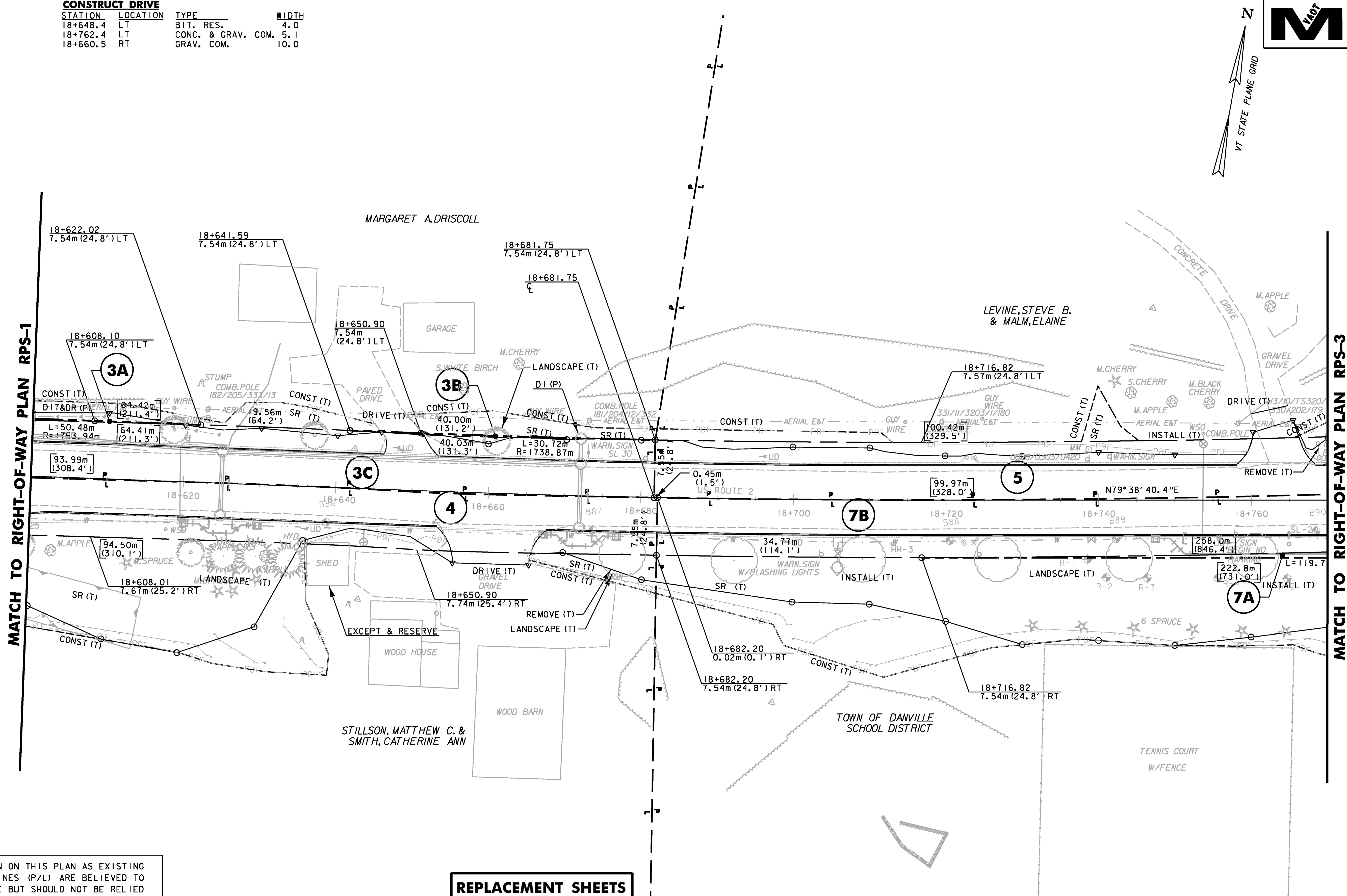
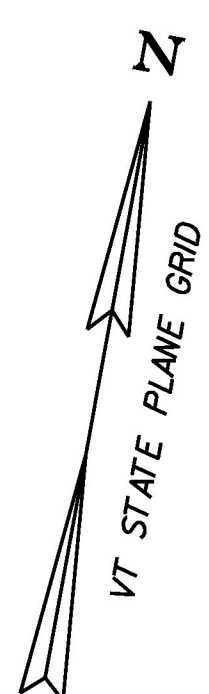


CONSTRUCT DRIVE			
STATION	LOCATION	TYPE	WIDTH
18+648.4	LT	BIT. RES.	4.0
18+762.4	LT	CONC. & GRAV. COM.	5.1
18+660.5	RT	GRAV. COM.	10.0



MATCH TO RIGHT-OF-WAY PLAN RPS-1

MATCH TO RIGHT-OF-WAY PLAN RPS-3

LINES SHOWN ON THIS PLAN AS EXISTING PROPERTY LINES (P/L) ARE BELIEVED TO BE ACCURATE BUT SHOULD NOT BE RELIED UPON FOR PURPOSES UNRELATED TO THE STATE OF VERMONT'S ACQUISITION OF LAND AND RIGHTS FOR THIS PROJECT.

**REPLACEMENT SHEETS  
ISSUED 02/24/2012**

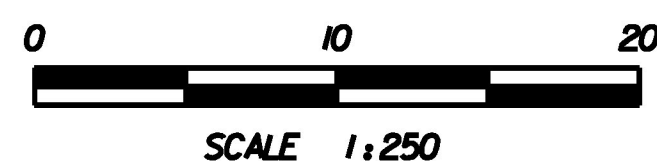
<b>DATUM</b>	
VERTICAL	NAVD88
HORIZONTAL	NAD83(92)

FOR EROSION CONTROL NOTES AND DETAILS SEE ROW SHEET 36 OF 107

FOR LANDSCAPING NOTES AND DETAILS SEE ROW SHEET 47 OF 107

FOR DRAINAGE NOTES AND DETAILS SEE ROW SHEET 24 OF 107

FOR CONSTRUCTION NOTES AND DETAILS SEE ROW SHEET 24 OF 107



THIS SHEET FOR R.O.W. USE ONLY		STA 18+600 TO 18+770	
PROJECT NAME: DANVILLE			
PROJECT NUMBER: F EGC 028-3(32)			
FILE NAME: ...ROW\row_plan_plot_sheets.ptf	PLOT DATE: 2/24/2012	DESIGN SUPERVISOR: GARY SANTY	DRAWN BY: STANTEC
DESIGNED BY: STANTEC	CHECKED BY: STANTEC	RIGHT-OF-WAY PLAN RPS-2	
		SHEET 34 OF 306	

2/24/2012 4:04:36 PM V:\953\active\9530033\_0092\Highway\PlotFiles\ROW\row\_plan\_plot\_sheets.ptf