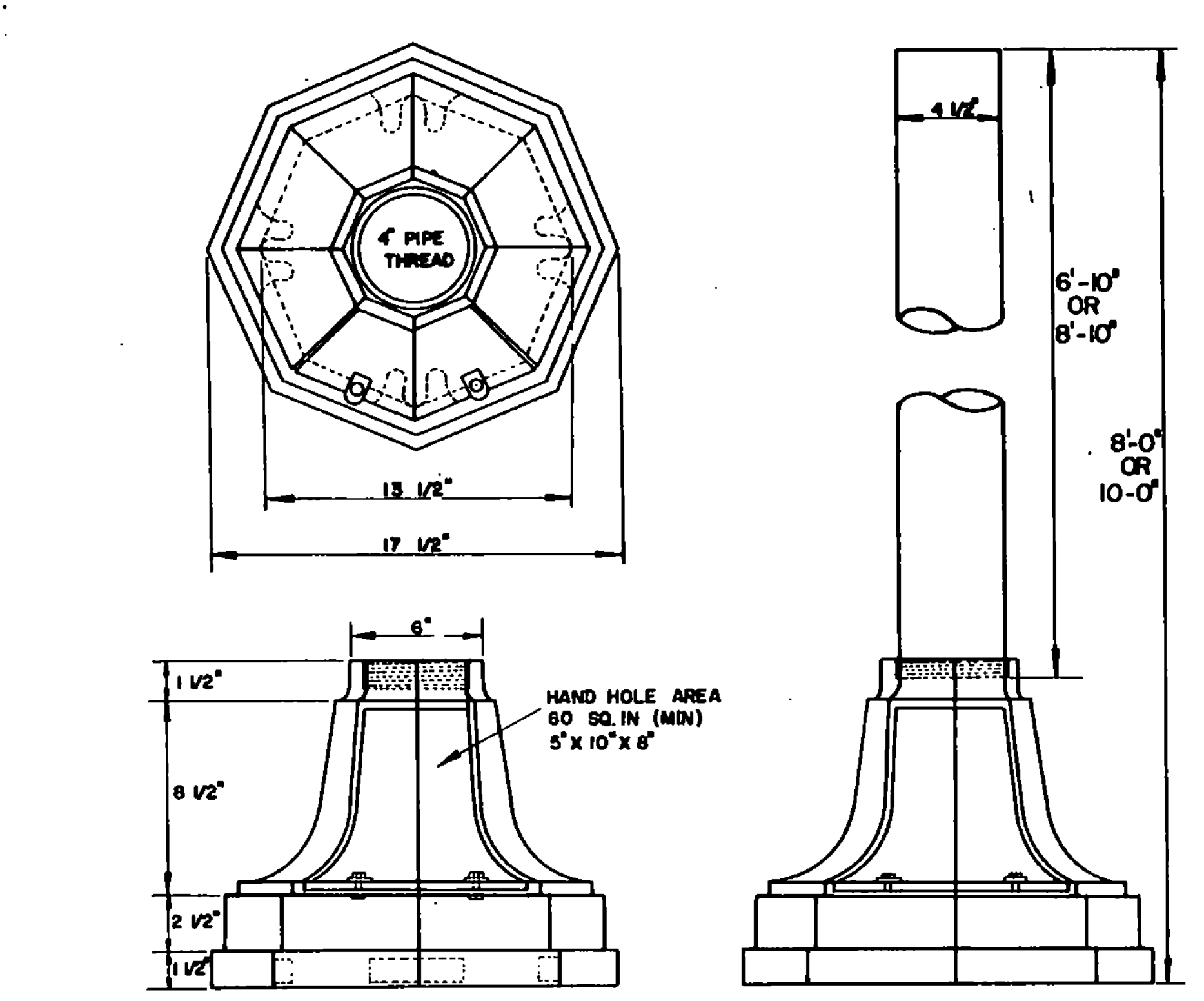
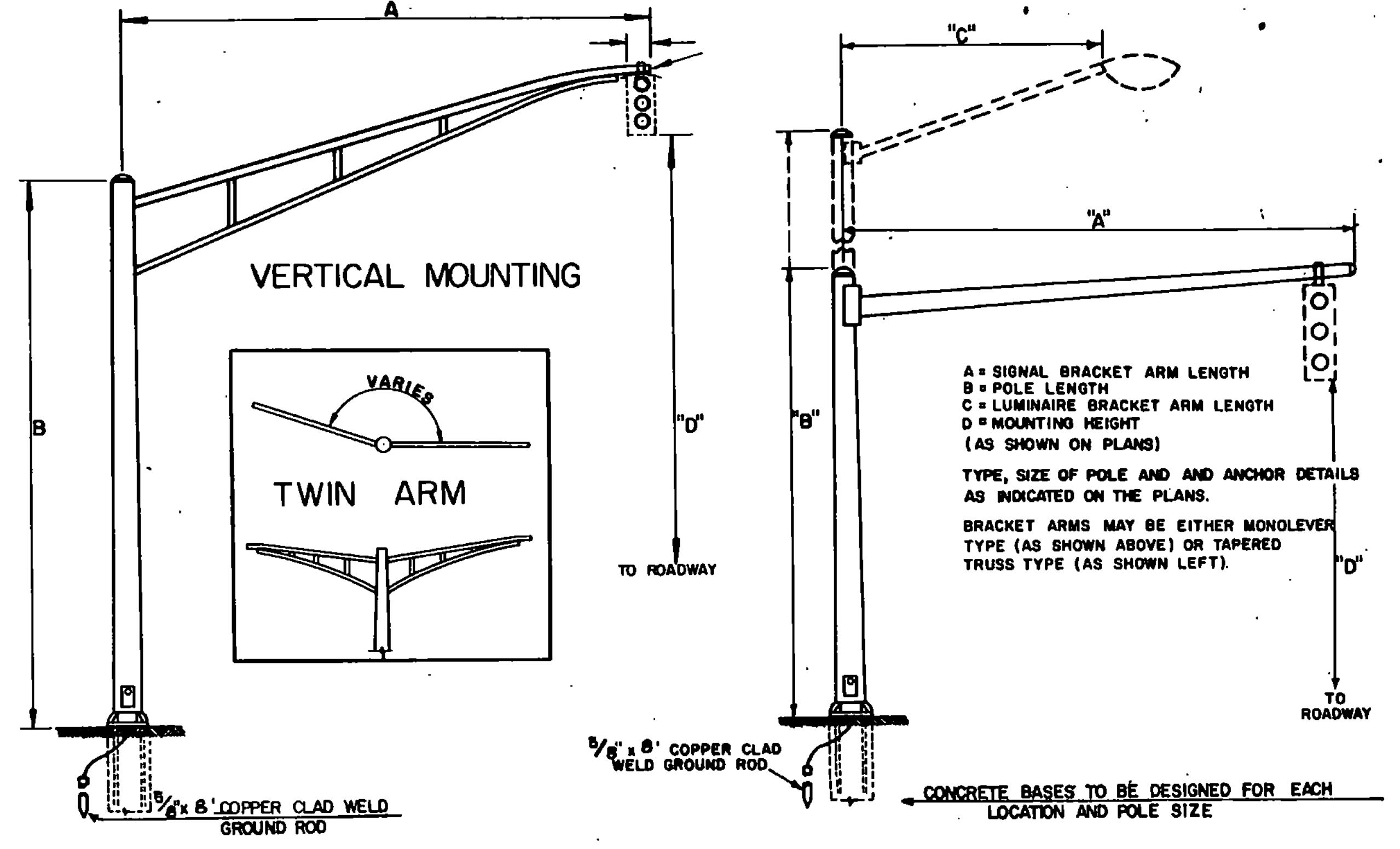


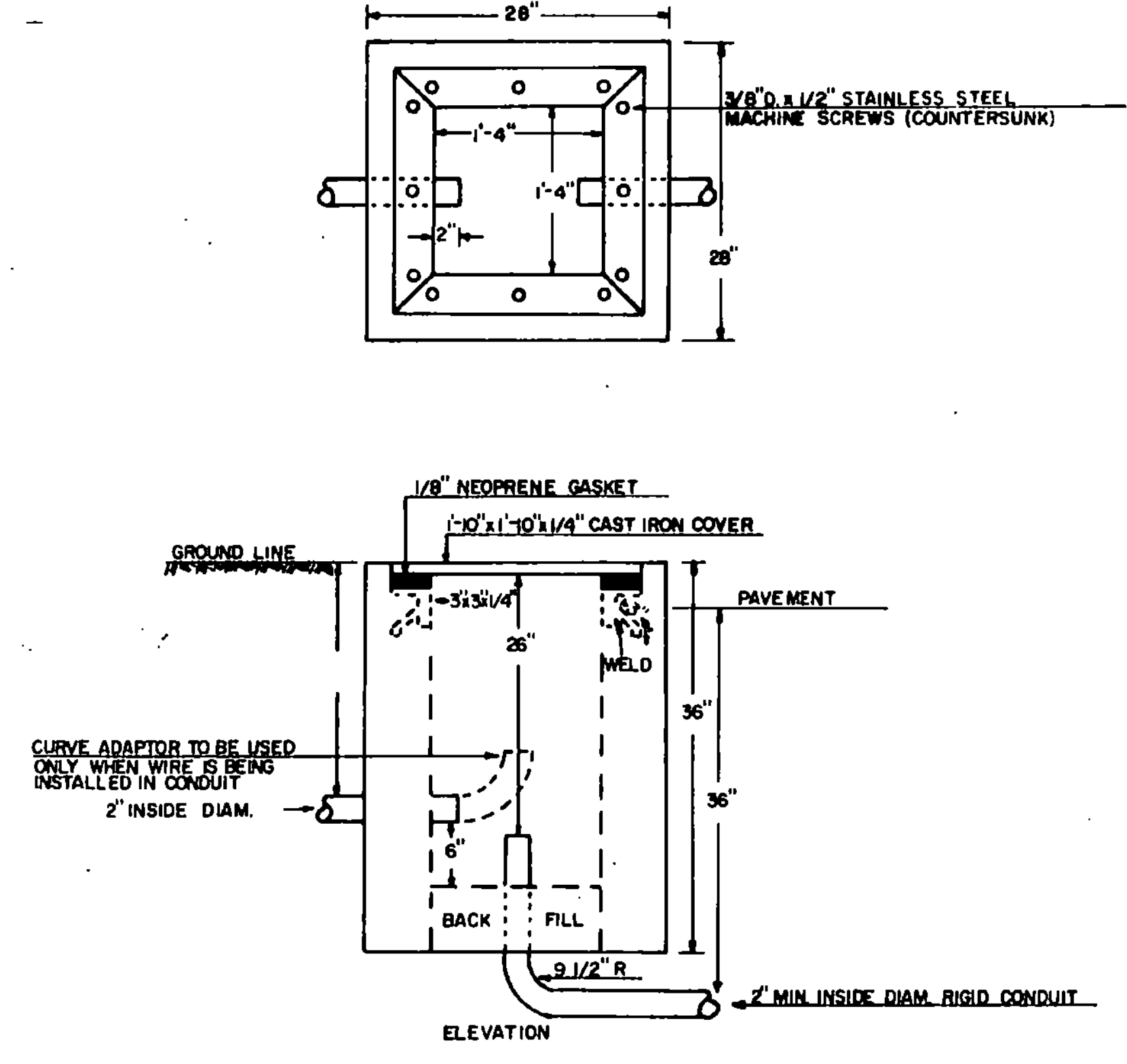
DETAILS OF PULL BOX TYPE -"A"



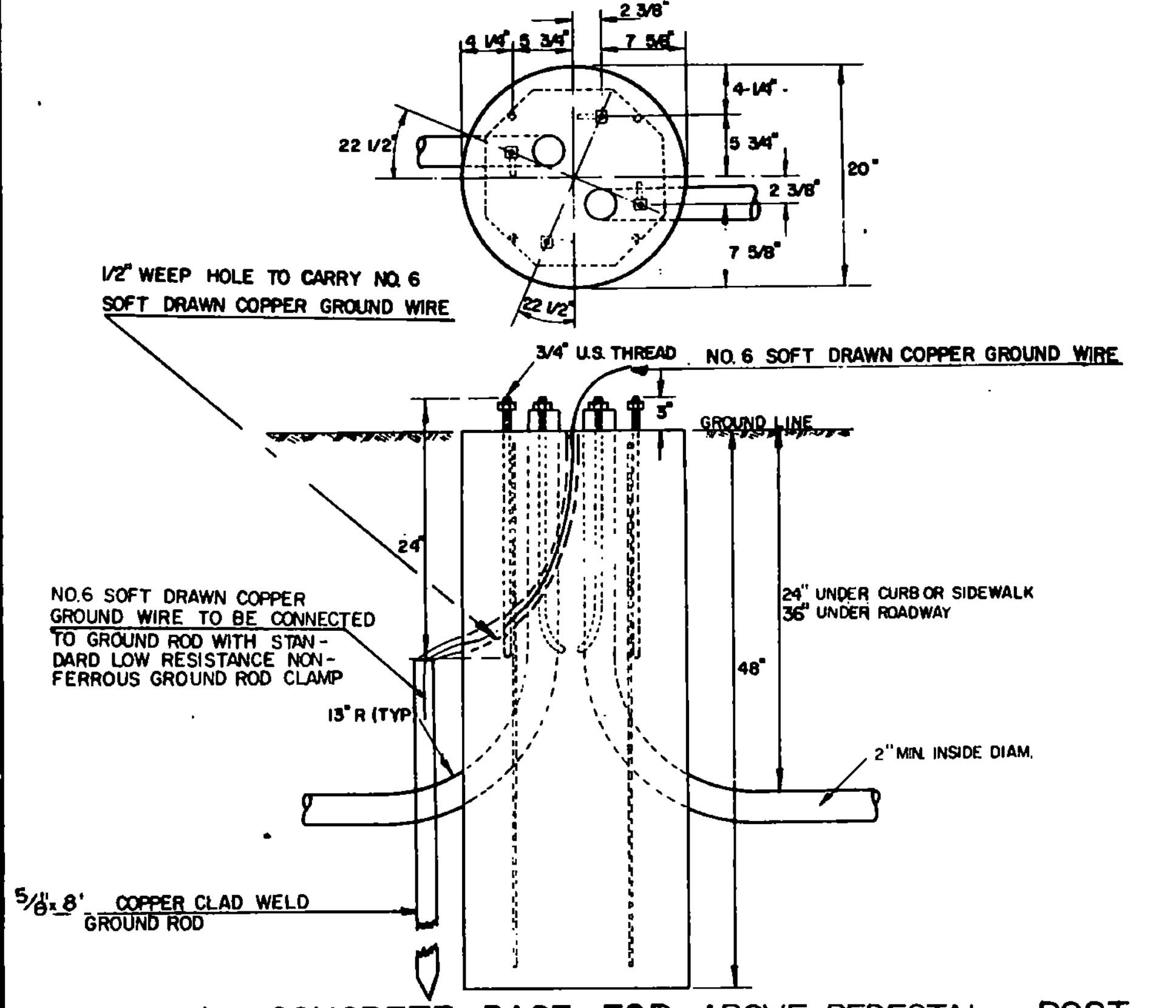
DETAILS OF TRAFFIC SIGNAL PEDESTAL POST & BASE



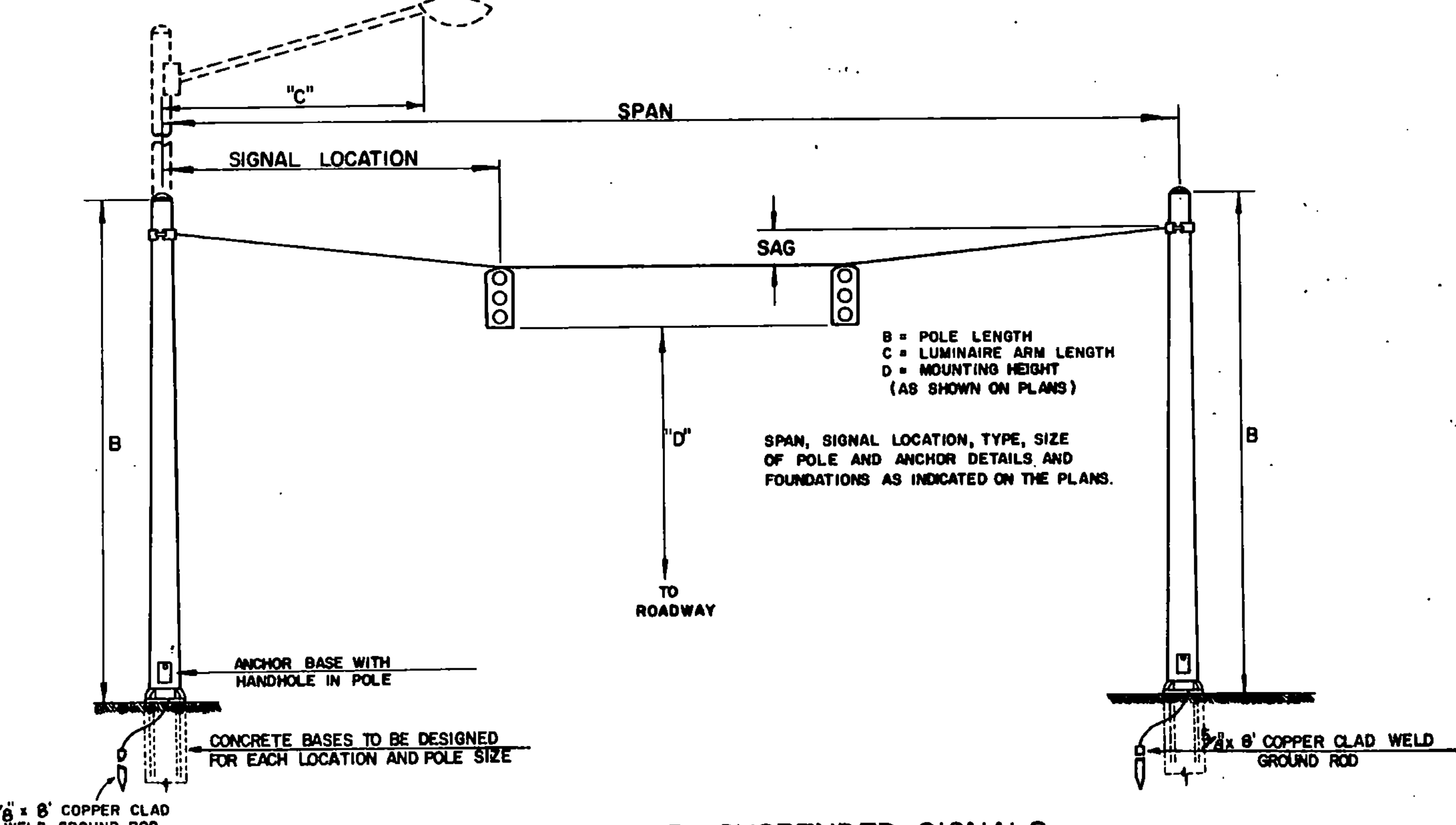
TRAFFIC SIGNAL POLES WITH BRACKET ARMS FOR SIGNALS (AND LUMINAIRES)



DETAILS OF PULL BOX TYPE -"B"



DETAILS OF CONCRETE BASE FOR ABOVE PEDESTAL POST



STRAIN POLES FOR SUSPENDED SIGNALS (AND LUMINAIRES)

REVISIONS AND CORRECTIONS  
 APRIL 29, 1980 CHANGED MATERIAL SPECIFIED FOR SCREWS ATTACHING COVER TO PULL BOXES.  
 AUG. 6, 1981 CHANGED GROUND ROD FROM 1" X 10' TO 5/8" X 8"  
 FEB. 3, 1986 - UPDATED TO 1986 SPECIFICATIONS

APPROVED  
 Dec. 17, 1971  
 DATE  
 R.H. Arnold  
 CHIEF ENGINEER  
 E.H. Stinchey  
 ASST. CHIEF ENGINEER  
 G.M. Low  
 HIGHWAY ENGINEER

TRAFFIC CONTROL SIGNALS

STANDARD  
 E-33