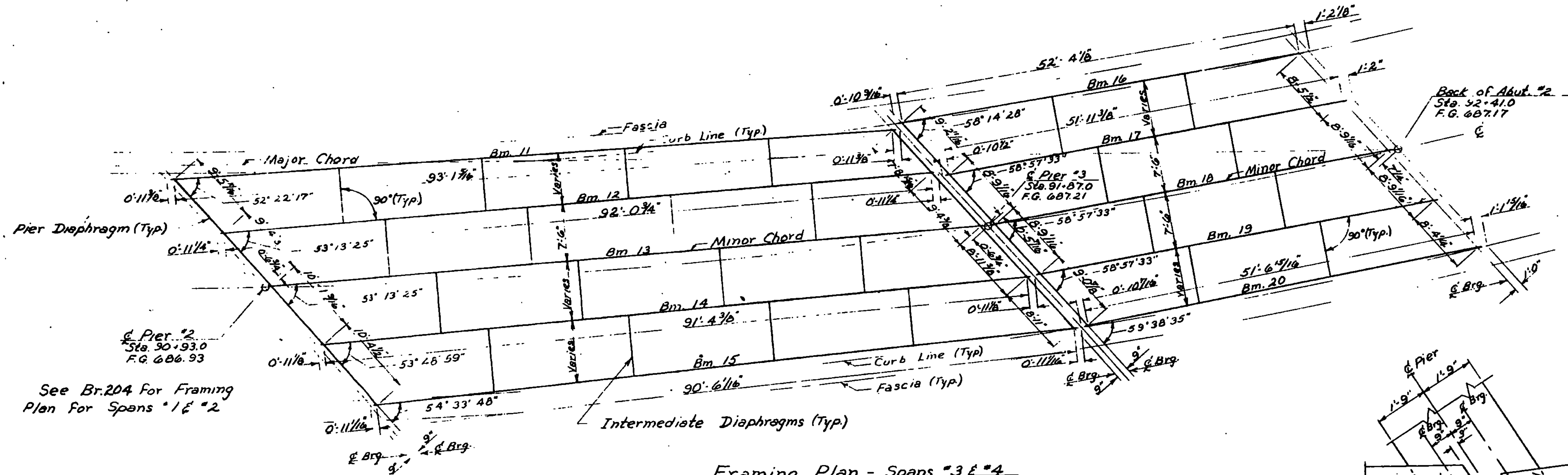


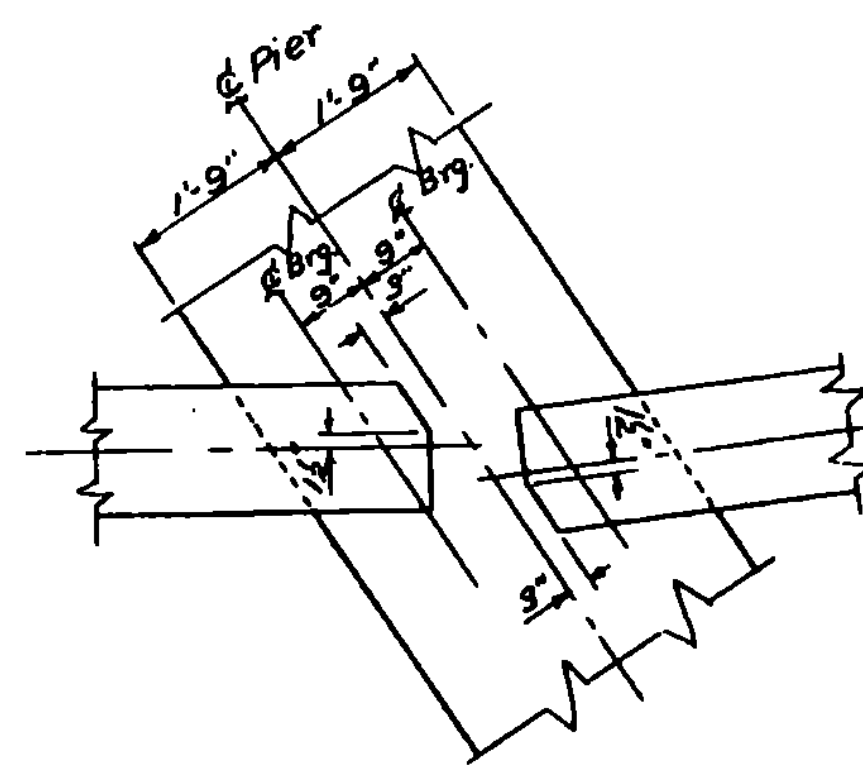
Superstructure Plan - Spans 3 & 4
Scale: 1/8" = 1'-0"

Notes

1. For Beam sizes and Cover Plate sizes and lengths see Standard Sheet SCB-30-65 & SCB-D7-65, Detail "C".
2. For additional details of diaphragms see Standard Sheet SCB-D7-65, Details "A", "D", "E".
3. For Typical Section of Superstructure see Br. 202
4. For additional Superstructure details see Standard Sheets SCB-D1-65 thru SCB-D9-65.
5. No Scuppers are to be used on this bridge.
6. For General Notes see Br. 200



Framing Plan - Spans 3 & 4
Scale: 1/8" = 1'-0"



Details of WF Cut-offs @ Piers
Scale: 1/2" = 1'-0"
(Note: Cut top flange only)

IR-DECK (15) U.S.#4, BR #65A
THIS SHEET FOR INFORMATION ONLY.
Br. 205 of 214

STATE OF VERMONT
DEPARTMENT OF HIGHWAYS

TOWN OF Hartford
ROUTE No. U.S.#4, LOG STA.
U.S.#4 over I 89

Superstructure: Spans
SCALE: As noted

SURVEYED BY: _____
DRAWN BY: BT CHECKED BY: _____

PROJECT No. 100-1(2)
SHEET No. _____