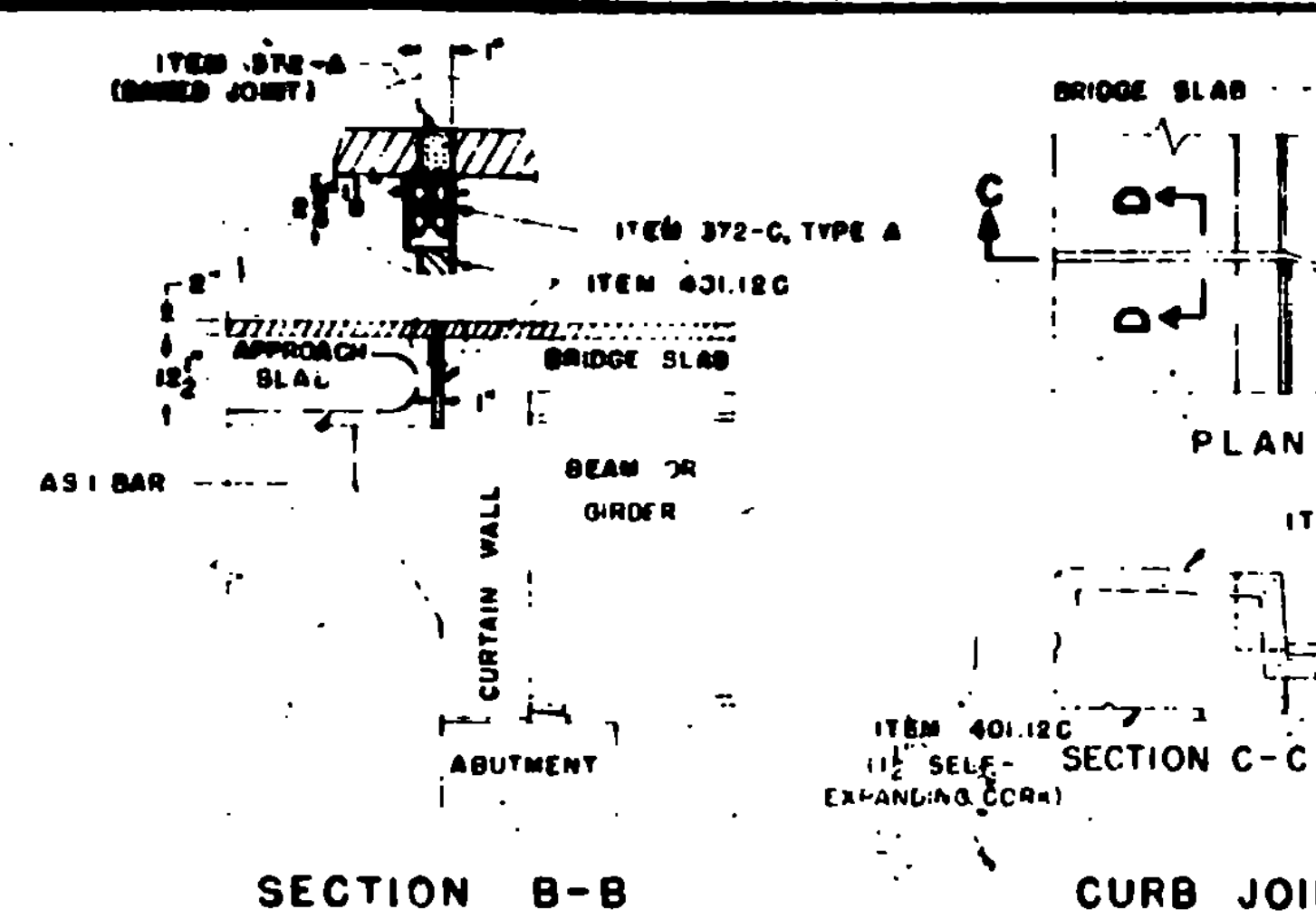
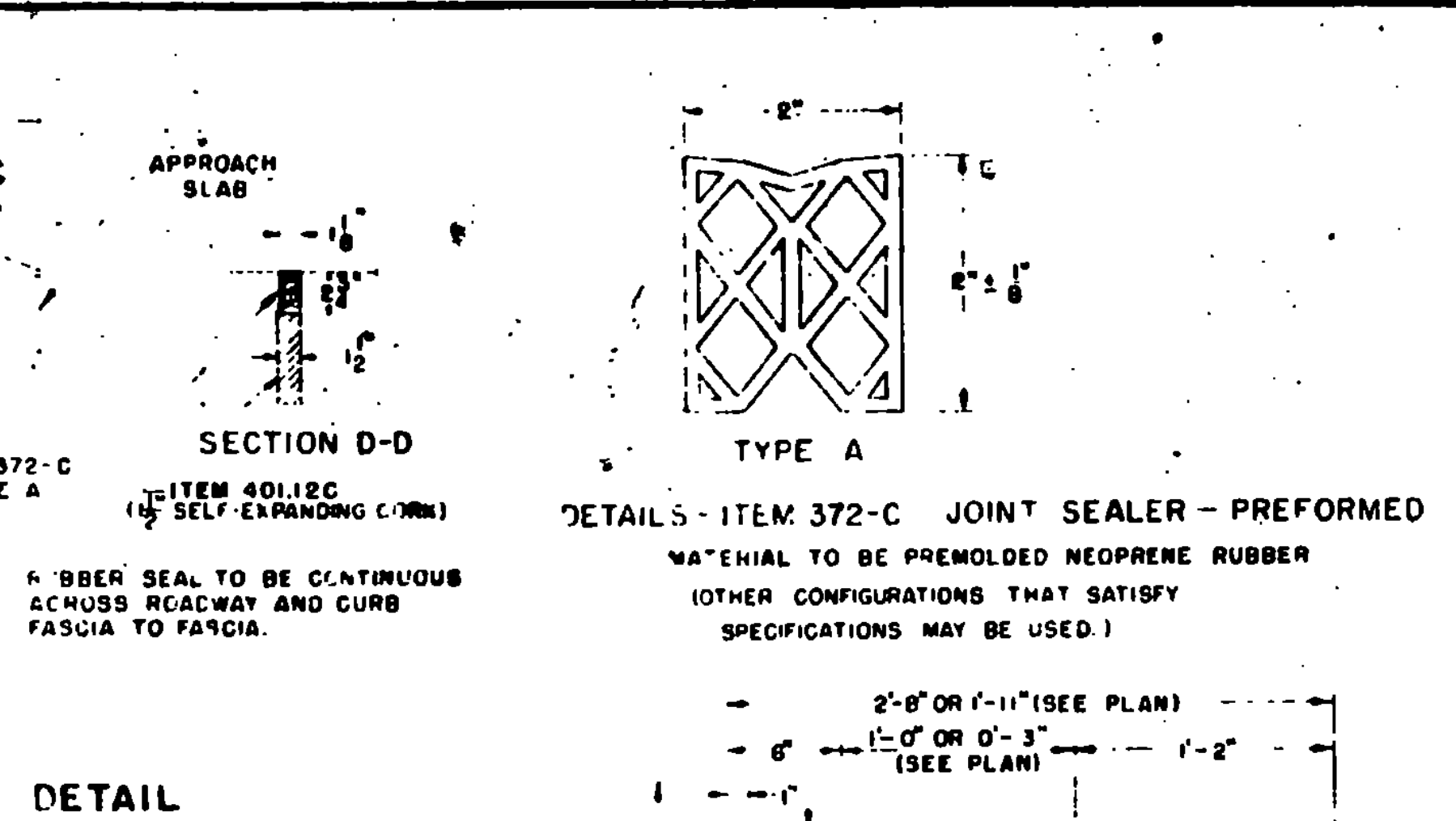


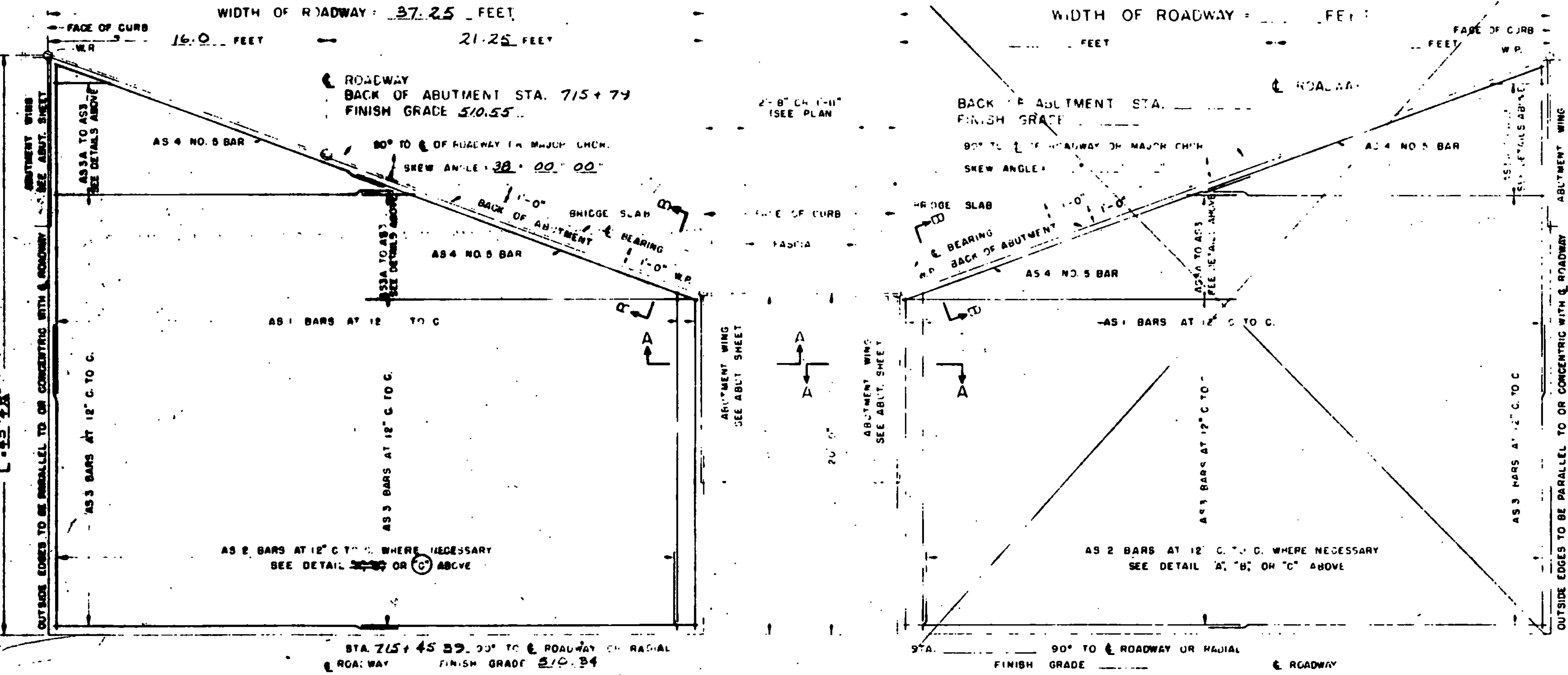
DETAIL "A" - SQUARE
 DETAIL "B" - "L" LESS THAN 35'
 DETAIL "C" - "L" GREATER THAN 35'



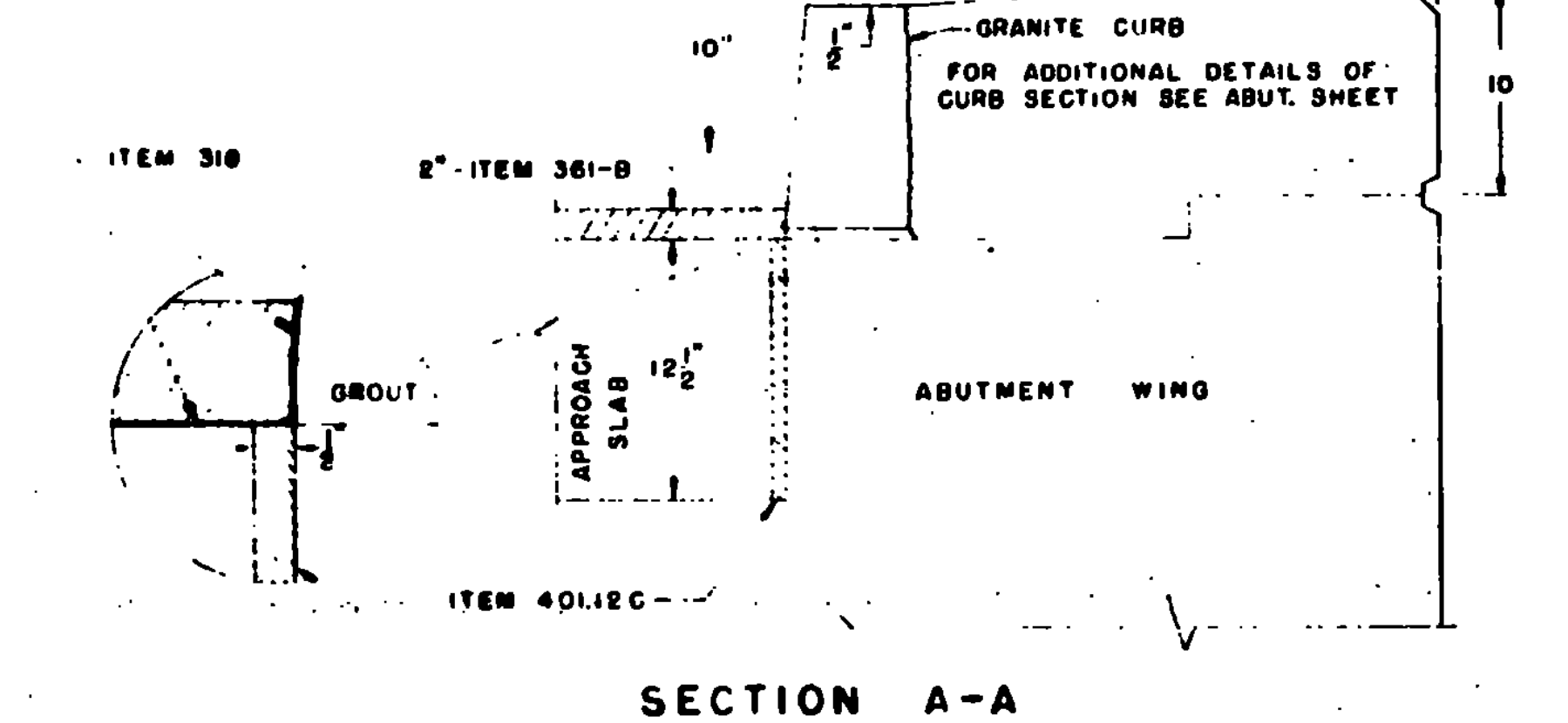
SECTION B-B
 CURB JOINT DETAIL



SECTION D-D
 TYPE A
 DETAILS - ITEM 372-C JOINT SEALER - PREFORMED

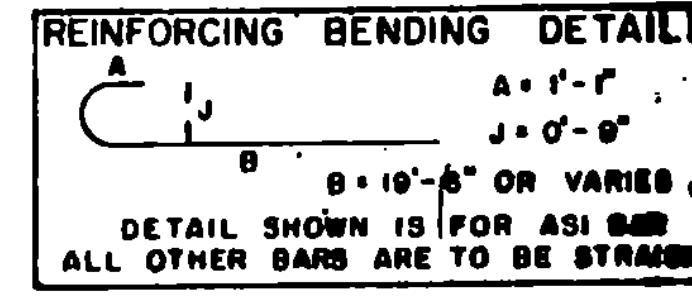


PLAN VIEW TYPE 1
 PLAN VIEW TYPE 2



SECTION A-A

GENERAL NOTES
 1. ALL WORK AND MATERIALS SHALL CONFORM TO THE STATE OF VERMONT, DEPARTMENT OF HIGHWAYS, STANDARD SPECIFICATIONS FOR HIGHWAY AND BRIDGE CONSTRUCTION DATED APRIL 1964, AND THE A.A.S.H.O. SPECIFICATIONS DATED 1961. DESIGNED FOR HS20-44 LOADING.
 2. ALL REINFORCING STEEL SHALL BE DETAILED ON THE REINFORCING STEEL SCHEDULE. ALL SPLICES SHALL BE A MINIMUM OF 40 BAR DIAMETERS.



REINFORCING BENDING DETAIL

ITEM NO.	ITEM	UNIT
318	TAR EMULSION FOR BRIDGE FLOORS	GAL.
361-B	BITUMINOUS CONCRETE PAVEMENT	TONS
372-A	JOINT SEALER - HOT Poured	L.F.
372-C	JOINT SEALER - PREFORMED, TYPE A	L.F.
401-B	CONCRETE CLASS B	CY.
402	REINFORCING STEEL	LB.

IR-DECK (15), I-89, BR.#'s 15 N. & S
 THIS SHEET FOR INFORMATION ONLY

PROJECT HARTFORD-SHARON
 TOWN OF SHARON
 ROUTE NO. I 89 STA. 717+0

I 89 OVER VT. 132
APPROACH SLAB #2 (N.S.)
 NOT TO SCALE

IN CHARGE R. O'Neil
 DESIGNED [Signature] CHECKED BY [Signature]

REVISIONS AND CORRECTIONS
 1. DIMENSIONS OF JOINT FOR SEALER TYPE A REVISED 4/15/65 W.B.T.
 2. DIMENSIONS OF JOINT SEALER TYPE B REVISED 6/23/65 W.B.T.
 3. JOINT BETWEEN CURB AND SLAB REVISED, BITUMINOUS CONCRETE REVISED TO 2" QUANTITY TOTALS REMOVED. 12/7/65. W.B.T.

DRAWN BY: W.M.S. 12/20/64
 TRACED BY: W.M.S. 12/20/64
 CHECKED BY: W.M.S. 12/20/64
 RECOMMENDED FOR APPROVAL: [Signature] 2/4/65
 RECOMMENDED FOR APPROVAL: [Signature] 2/4/65
 APPROVED BY: [Signature] 2/4/65

DETAILS OF APPROACH SLAB FOR 37.25 FOOT BRIDGE
 TO BE USED FOR BRIDGE AT STATION 717+0
 LOCATION I 89 OVER VT. #132

STATE OF VERMONT
 DEPARTMENT OF HIGHWAYS
 STANDARD STRUCTURE
SB-AS-65