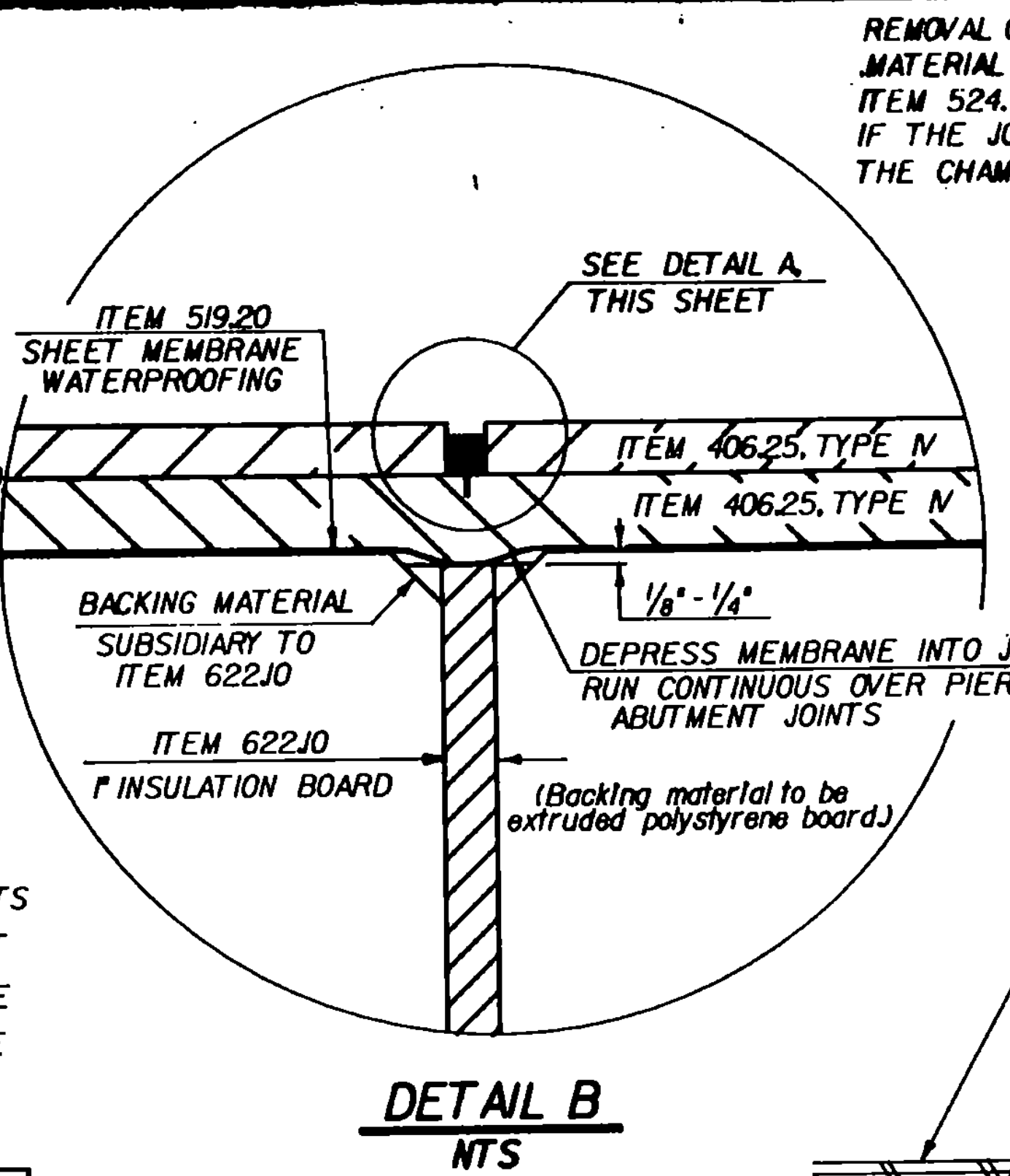
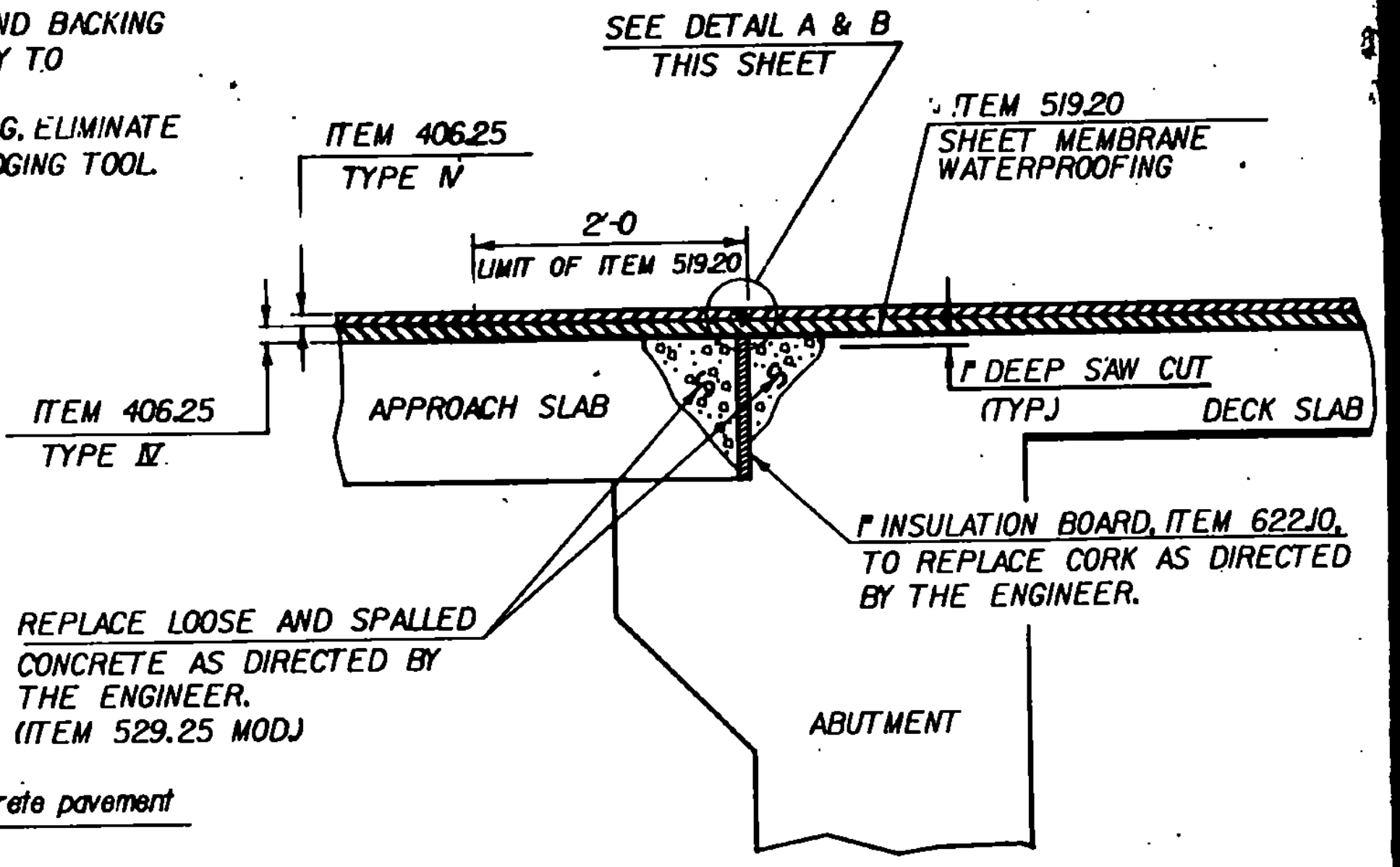


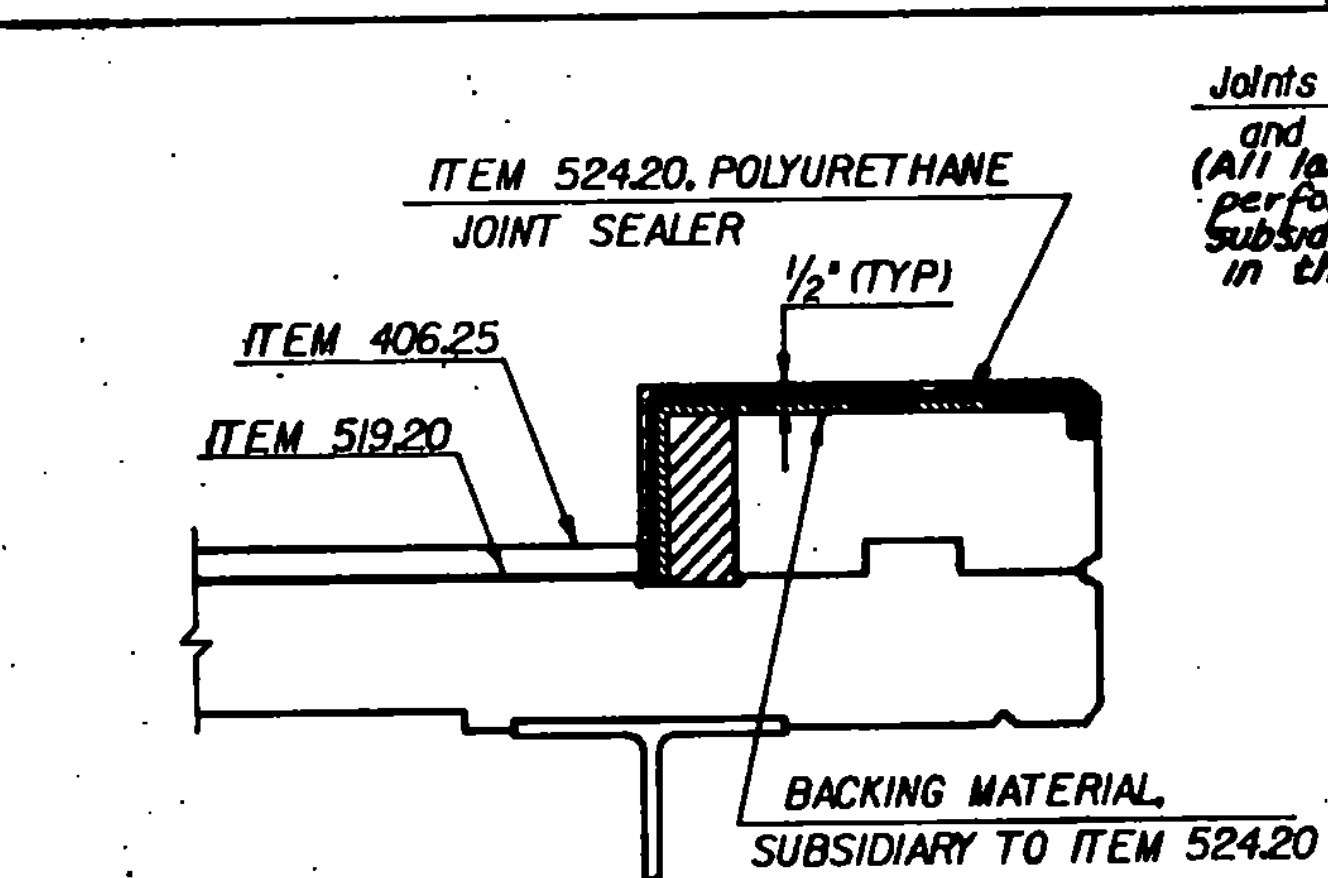
MEMBRANE WILL BE DEPRESSED INTO DECK JOINTS AND RUN CONTINUOUS OVER PIER AND ABUTMENT JOINTS. ON BRIDGES WITH APPROACH SLABS, THE MEMBRANE WILL EXTEND TWO (2) FEET ONTO THE SLAB FROM THE END OF THE BRIDGE.



REMOVAL OF EXISTING JOINT AND BACKING MATERIAL SHALL BE SUBSIDIARY TO ITEM 524.15 OR ITEM 622.10. IF THE JOINT NEEDS REPAIRING, ELIMINATE THE CHAMFER BY USING AN EDGING TOOL.

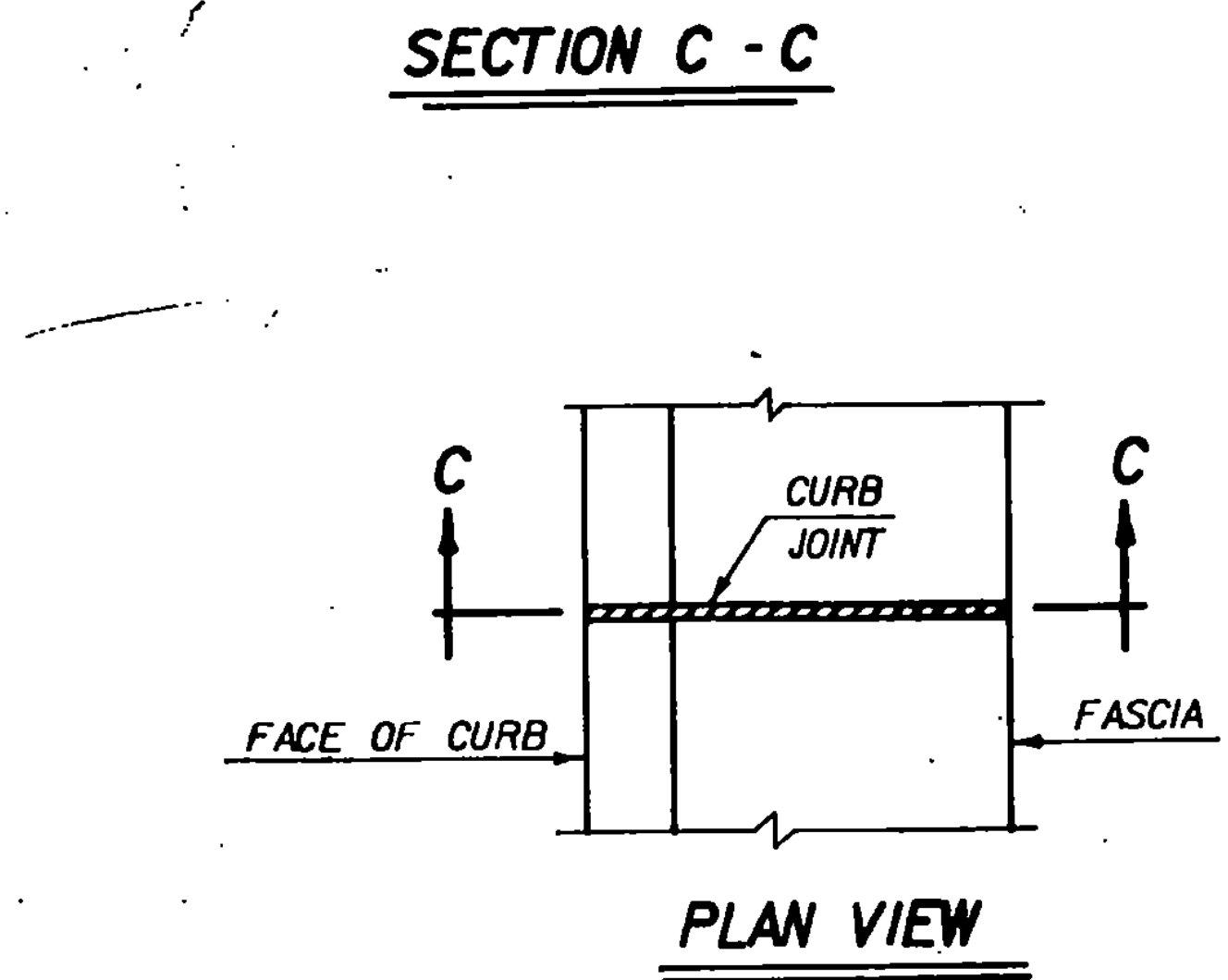


REPLACE LOOSE AND SPALLED CONCRETE AS DIRECTED BY THE ENGINEER, (ITEM 529.25 MOD)

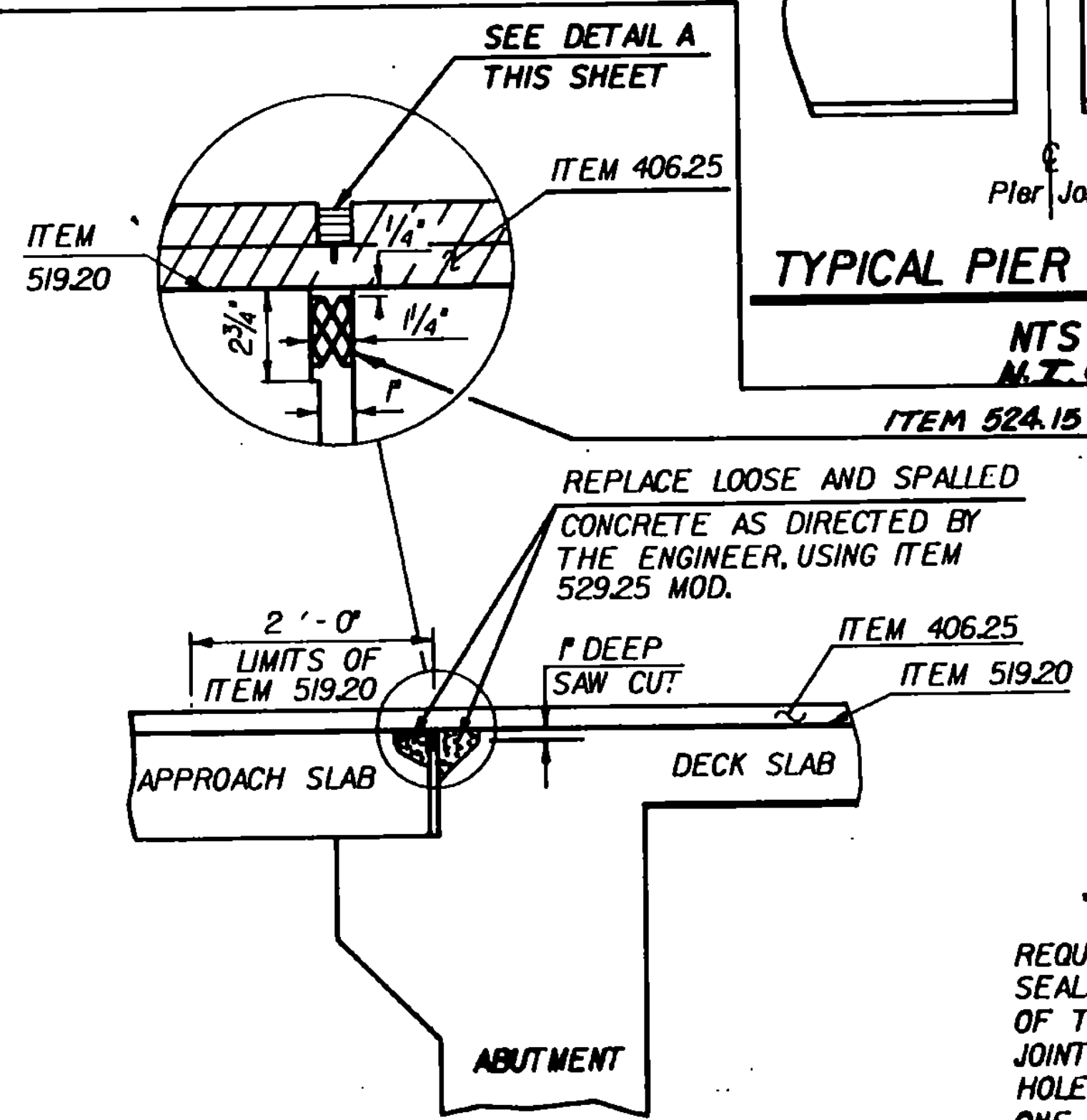
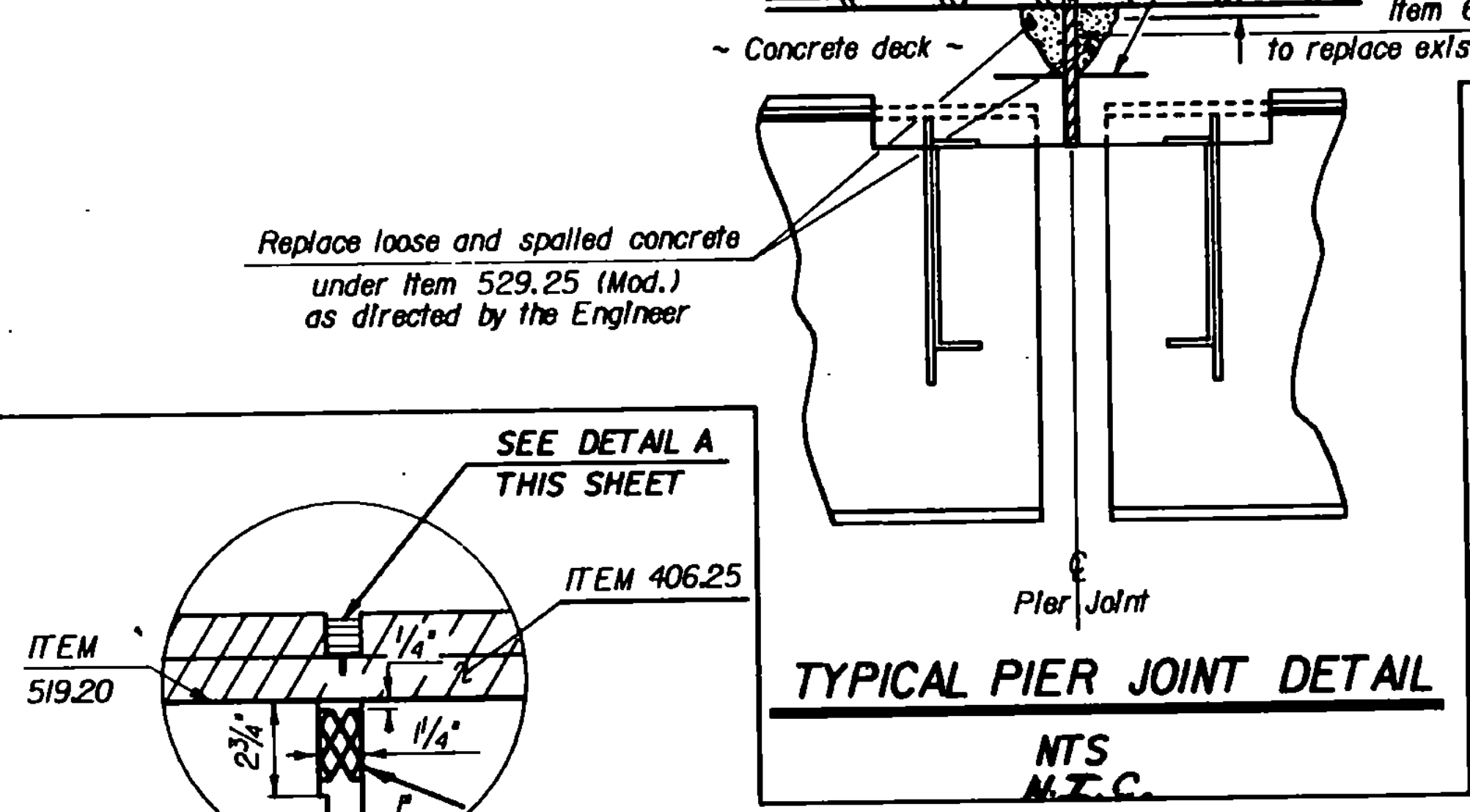


Joints to be raked out to a depth of 2" and repointed with Mortar, Type I (All labor and material required to perform this operation shall be subsidiary to all other items in the contract.)

REPLACE LOOSE AND SPALLED CONCRETE AS DIRECTED BY THE ENGINEER, USING ITEM 529.25 MOD.

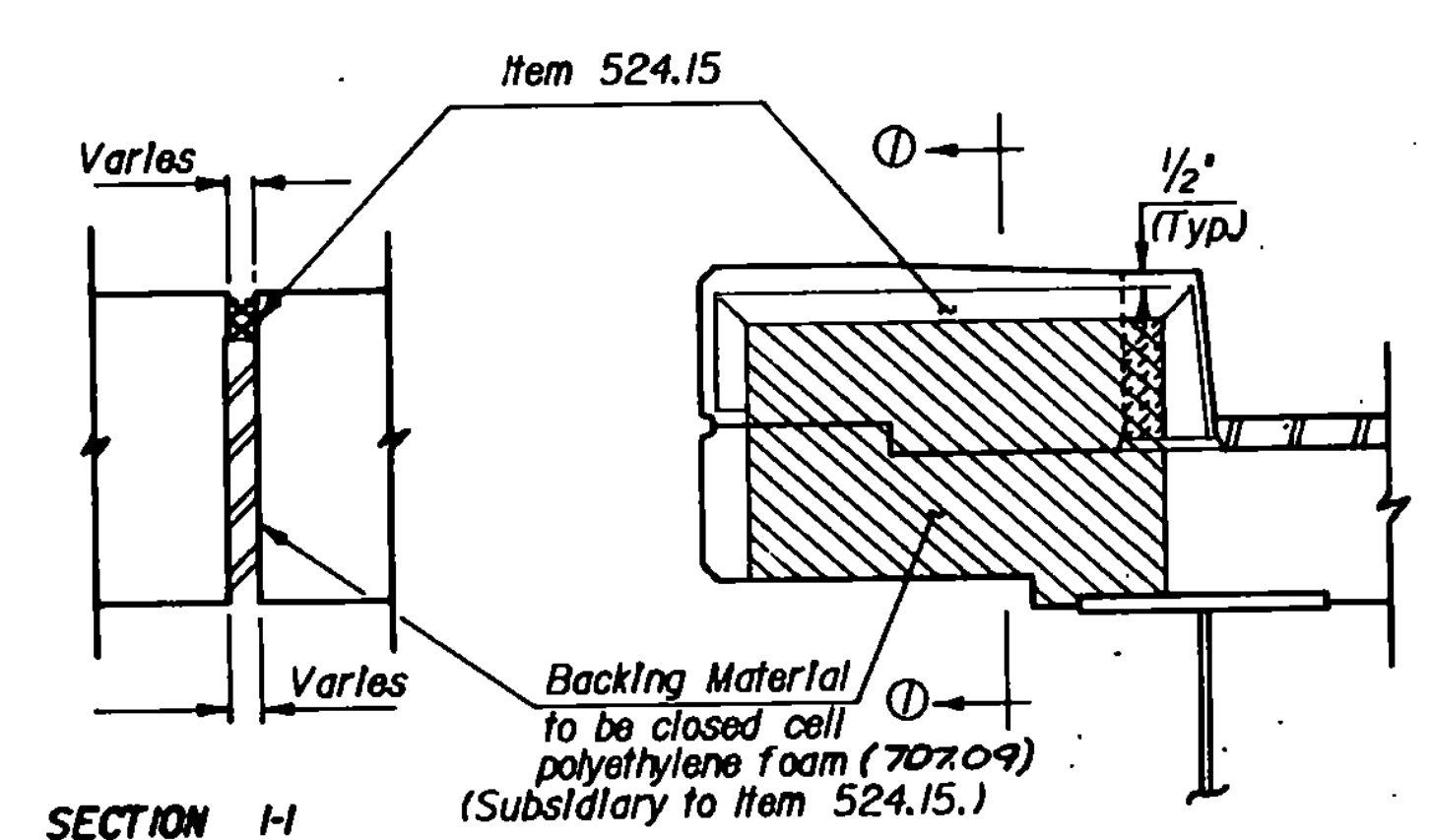


**CURB JOINT DETAIL**  
NTS



**ADHESIVE SPECIFICATION**

REQUIRED ADHESIVE FOR STRUCTURAL JOINT SEALS SERVES AS A LUBRICANT FOR INSERTION OF THE COMPRESSION SEALS IN STEEL AND CONCRETE JOINTS; PRIMES THE JOINT FACES; SEALS SMALL HOLES AND IMPERFECTIONS IN CONCRETE WALLS. ONE PART MOISTURE CURING POLYURETHANE AND AROMATIC HYDROCARBON SOLVENT MIXTURE. SOLID CONTENT 72% ± 3% BY WEIGHT. APPROXIMATE WEIGHT 8 1/2 ± POUNDS PER GALLON. COLOR, CONCRETE GRAY.



**STATE OF VERMONT AGENCY OF TRANSPORTATION**

Town of HARTLAND, HARTFORD, SHARON  
Highway No. \_\_\_\_\_  
Bridge No. \_\_\_\_\_  
Log Sta. \_\_\_\_\_  
Surr. Sta. \_\_\_\_\_

| TYPICAL DETAILS                        |                             |
|--|-----------------------------|
| Designed By G. Rogers                  | Drawn By G. Schelley/D. New |
| Checked By C. Rogers                   | Bridge Design Supervisor    |
| Date 7/86                              | F.W. Balkum Date 8/86       |
| PROJECT NO. HARTLAND, HARTFORD, SHARON | PROJECT NO. I.R. DECK (1)   |
| USAR 30.33 DECK REHAB                  | Sheet 11 of 37              |