

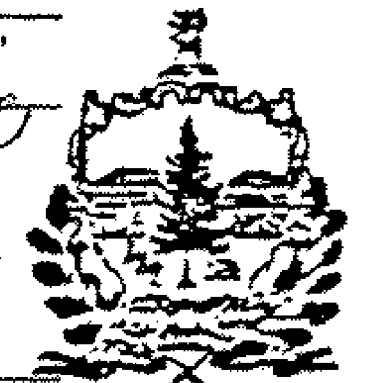
STATE OF VERMONT  
 AGENCY OF TRANSPORTATION

Date JUL 15 1985

*Cooley Asphalt Paving*  
 Contractor

*Walter A. Lapinski*  
 Signature

*President*  
 Title



CONTRACT PLANS

THESE PLANS DO NOT REFLECT  
 CHANGES MADE ON THE PROJECT.

*Frank E. Blumich*  
 Acting Transportation Secretary's  
 Signature

PROPOSED IMPROVEMENT

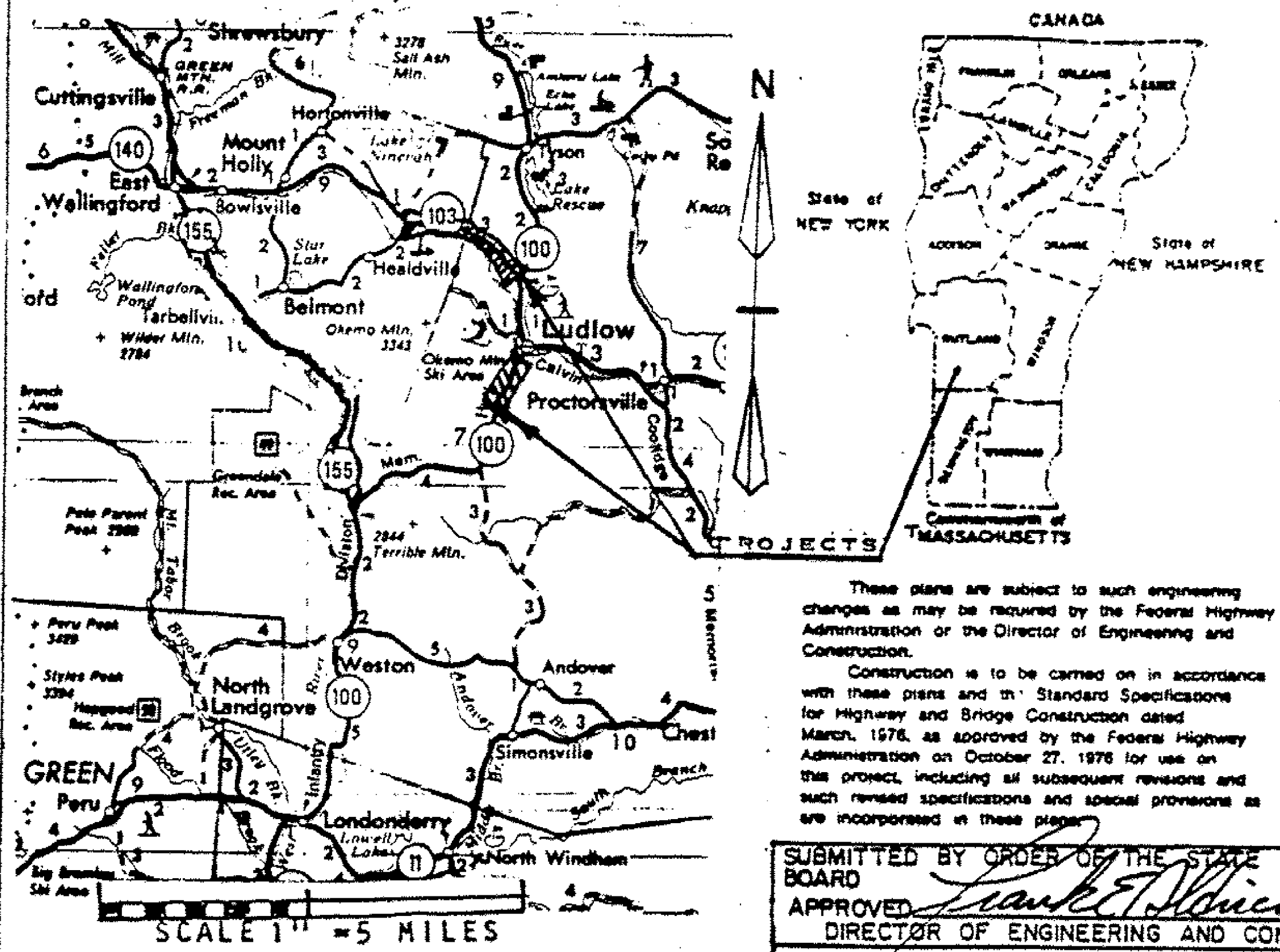
RESURFACING PROJECT

TOWN OF: LUDLOW\* LUDLOW-MT HOLLY\* SHREWSBURY

COUNTY OF: RUTLAND

ROUTE NO: VT 103-VT100

ROUTE CLASS: FAP



PROJECT PROCESSED UNDER  
 SECONDARY ROAD PLAN

These plans are subject to such engineering changes as may be required by the Federal Highway Administration or the Director of Engineering and Construction.  
 Construction is to be carried on in accordance with these plans and the Standard Specifications for Highway and Bridge Construction dated March, 1976, as approved by the Federal Highway Administration on October 27, 1976 for use on this project, including all subsequent revisions and such revised specifications and special provisions as are incorporated in these plans.

SUBMITTED BY ORDER OF THE STATE TRANSPORTATION BOARD  
 APPROVED *Frank E. Blumich* DATE 5/85  
 DIRECTOR OF ENGINEERING AND CONSTRUCTION  
 DEPARTMENT OF TRANSPORTATION  
 FEDERAL HIGHWAY ADMINISTRATION  
 APPROVED \_\_\_\_\_ DATE \_\_\_\_\_  
 DIVISION ADMINISTRATOR  
 PROJECT NO. HMA 2630 F025-1(26)S  
 SHEET 1 OF 24 SHEETS

SEE SHEET 2 FOR INDEX

INDEX OF SHEETS

- 1. TITLE SHEET
- 2. INDEX OF SHEETS
- 3,3A COMPOSITE QUANTITY SHEET

LUDLOW VT-100 HMA 2630

- 4. PROJECT DESCRIPTION AND LOCATION
- 5. TYPICAL SECTIONS AND DESIGN DATA
- 6. PROJECT LENGTHS AND ITEM QUANTITIES
- 7. CENTERLINE DATA

LUDLOW-MT HOLLY-SHREWSBURY VT-103 F025-1(26)S

- 8. PROJECT DESCRIPTION AND LOCATION-LUDLOW- MT HOLLY
- 9. PROJECT DESCRIPTION AND LOCATION- SHREWSBURY
- 10.,10A,10B TYPICAL SECTIONS AND DESIGN DATA-LUDLOW-MT HOLLY
- 11. TYPICAL SECTIONS AND DESIGN DATA- SHREWSBURY
- 12,12A,12B, PROJECT LENGTHS AND ITEM QUANTITIES
- 13,13A,13B, CENTERLINE DATA

- 14. *BLANK*
- 15. GUIDELINES FOR MINIMUM PAVEMENT MARKINGS
- 16. MAINLINE PAVEMENT MARKINGS ANT INTERSECTING SIDE ROADS
- 17. STOP LINE DETAILS
- 18. STANDARD SHEET E-2 (3-4-81R)
- 19. STANDARD SHEET E-6 (4-1-80R)
- 20. STANDARD SHEET E-8 (6-15-83R)
- 21. STANDARD SHEET E-24A (1-8-81R)
- 22. STANDARD SHEET E-29 (8-25-81R)
- 23. STANDARD SHEET E-45 (1-10-85R)
- 24. STANDARD SHEET E-50 (3-16-82R)
- 24a. STANDARD SHEET E-19A (10-3-84)

LUDLOW-MT HOLLY  
SHREWSBURY

PROJECT \_\_\_\_\_

NO. F025-1(26)S HMA2630

SHEET 2 OF 24 SHEETS

# PROJECT LENGTHS AND ITEM QUANTITIES

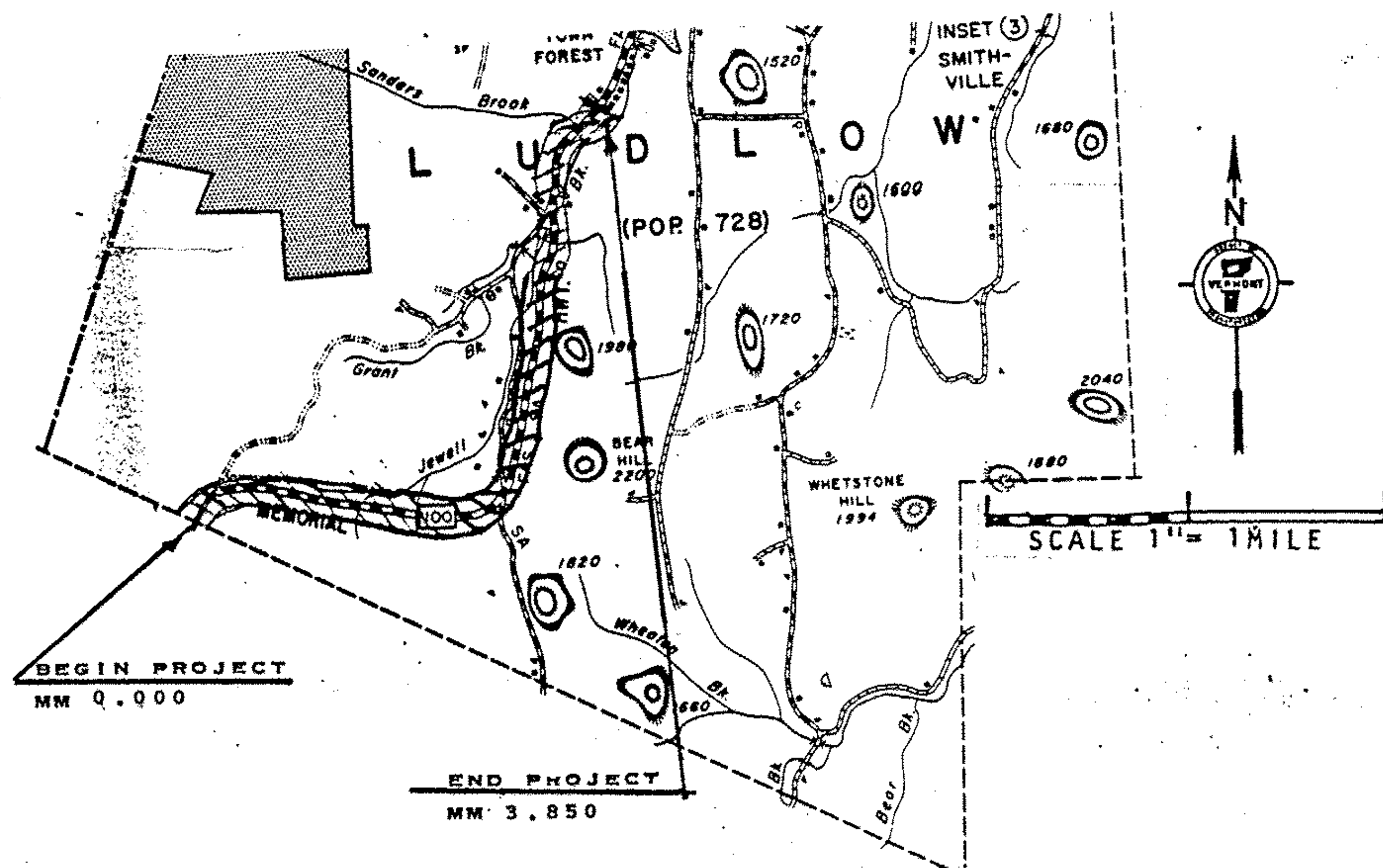
| ITEM DESCRIPTION  | ITEM NUMBER |       |               |         |                  |                  |                    |        |                              |                                |                                 |                    |                           |             |              |                    | REMARKS |                   |                |                  |
|---|-------------|-------|---------------|---------|------------------|------------------|--------------------|--------|------------------------------|--------------------------------|---------------------------------|--------------------|---------------------------|-------------|--------------|--------------------|---------|-------------------|----------------|------------------|
|   | LENGTH      | WIDTH | OVERLAY DEPTH | TOPSOIL | GRAVEL SHOULDERS | GRAVEL SHOULDERS | EMULSIFIED ASPHALT | OPTION | BITUMINOUS CONCRETE PAVEMENT | CHANCE ELEV. OF CB, DI, OR III | ALL PURPOSE EXC. PENTAL, TYPE I | POWER BROOM PENTAL | ENFORCED TRAFFIC OFFICERS | FLAGPERSONS | MOBILIZATION | TEMPORARY PAVEMENT |         | MARKING 4" YELLOW | TEMP. PAVEMENT | MARKING 4" WHITE |
| UNIT  | FEET        | FT    | INCH          | CY.     | CY               | TON              | CWT                | TON    | EA                           | HR                             | HR                              | HR                 | HR                        | LS          | LF           |                    |         |                   |                |                  |
| LOCATION  |             |       |               |         |                  |                  |                    |        |                              |                                |                                 |                    |                           |             |              |                    |         |                   |                |                  |
| HMA 2630<br>LUDLOW<br>VH. 100                           |             |       | 3/4           | 100     | 500              | 875              | 85                 | 4150   | 1                            | 5                              | 40                              | 210                | 210                       | 37          | 61800        | 40700              |         |                   |                |                  |
| F025-1(26)S<br>LUDLOW - MT. HOLLY<br>SHREWSBURY VH. 103 |             |       | 1 1/2         | 110     | 250              | 450              | 180                | 11100  | 10                           | 10                             | 50                              | 555                | 555                       | 63          | 84200        | 56800              |         |                   |                |                  |
| <b>TOTAL</b>  |             |       |               | 210     | 750              | 1325             | 265                | 15250  | 11                           | 15                             | 90                              | 765                | 765                       | 1           | 146000       | 97500              |         |                   |                |                  |

COMPOSITE PROJECT LUDLOW-MT. HOLLY - SHREWSBURY NUMBER HMA 2630-F025-1(26)S SHEET 3 OF 24

COMPOSITE QUANTITIES

| ITEM DESCRIPTION        | ITEM NUMBER |        |        |        |        |        |     |     |  |  | REMARKS |  |
|-------------------------|-------------|--------|--------|--------|--------|--------|-----|-----|--|--|---------|--|
|                         | 646.21      | 646.64 | 646.67 | 675.20 | 675.35 | 646.60 |     |     |  |  |         |  |
| UNIT                    | FEET        | FT     | LF     | LF     | EA     | SF     | LB  | LF  |  |  |         |  |
| LUDLOW-MT HOLLY Vt. 103 |             |        | 300    |        |        |        |     | 150 |  |  |         |  |
| SHREWSBURY Vt. 103      |             |        |        | 48     | 3      | 33.9   | 128 |     |  |  |         |  |
|                         |             |        |        |        |        |        |     |     |  |  |         |  |
|                         |             |        |        |        |        |        |     |     |  |  |         |  |
|                         |             |        |        |        |        |        |     |     |  |  |         |  |
|                         |             |        |        |        |        |        |     |     |  |  |         |  |
|                         |             |        |        |        |        |        |     |     |  |  |         |  |
|                         |             |        |        |        |        |        |     |     |  |  |         |  |
|                         |             |        |        |        |        |        |     |     |  |  |         |  |
|                         |             |        |        |        |        |        |     |     |  |  |         |  |
|                         |             |        |        |        |        |        |     |     |  |  |         |  |
|                         |             |        |        |        |        |        |     |     |  |  |         |  |
|                         |             |        |        |        |        |        |     |     |  |  |         |  |
|                         |             |        |        |        |        |        |     |     |  |  |         |  |
|                         |             |        |        |        |        |        |     |     |  |  |         |  |
|                         |             |        |        |        |        |        |     |     |  |  |         |  |
| TOTAL                   |             |        | 300    | 48     | 3      | 33.9   | 128 | 150 |  |  |         |  |

# PROJECT DESCRIPTION AND LOCATION



ON VT 100, BEGINNING IN THE TOWN OF LUDLOW AT MM 0.000 AND  
EXTENDING 3.850 MILES TO MM 3.850.

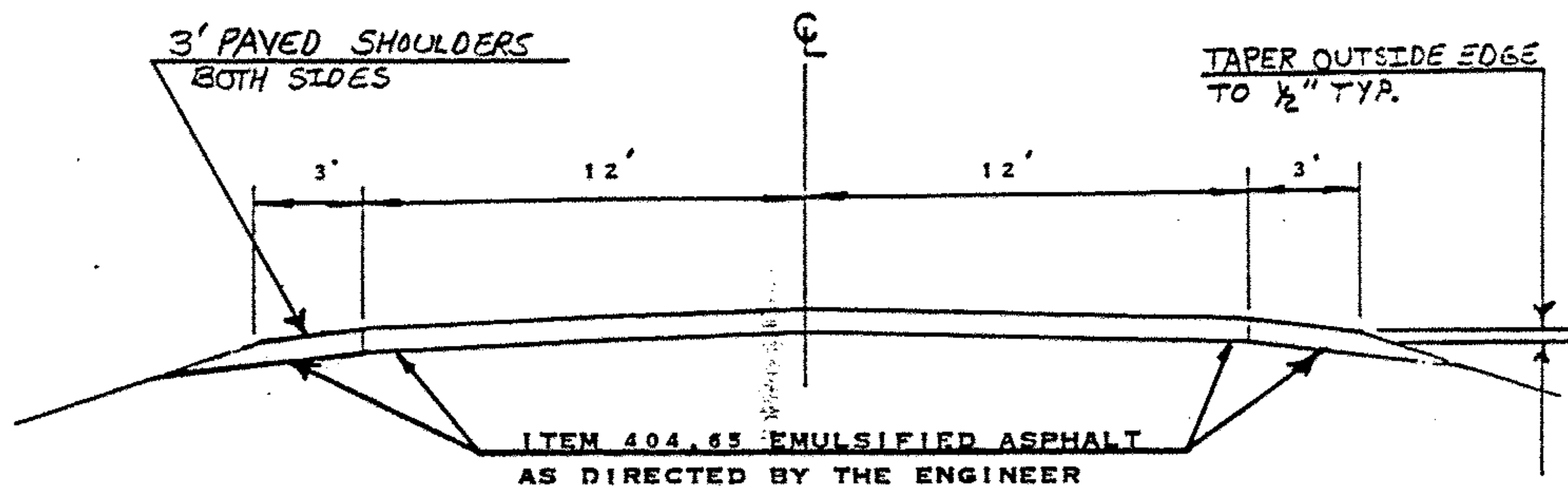
LENGTH OF PROJECT  
3.850 MILES  
20328 FEET

PROJECT LUDLOW

NO. HMA 2630  
SHEET 4 OF 24 SHEETS

# TYPICAL SECTIONS & DESIGN DATA

ITEM 406.25 BITUMINOUS CONCRETE PAVEMENT  
LEVELING COURSE TYPE III OR IV (327 TONS/MILE)  
AS DIRECTED BY THE ENGINEER  
3/4" WEARING COURSE TYPE IV (±1/4)



ITEM 404.65 EMULSIFIED ASPHALT  
AS DIRECTED BY THE ENGINEER

LUDLOW  
MM 0.000 MM 3.850  
VT 100

1982 ADT 1220  
V 50

PROJECT LUDLOW-

NO. HMA 2630

SHEET 5 OF 24 SHEETS

# PROJECT LENGTHS AND ITEM QUANTITIES

| ITEM DESCRIPTION                  | LENGTH |        | OVERLAY DEPTH | ITEM QUANTITIES |                  |                    |                              |                                |                                 |                    |                           |             |              |                                  |                                   |        |  |                    |  |
|-----------------------------------|--------|--------|---------------|-----------------|------------------|--------------------|------------------------------|--------------------------------|---------------------------------|--------------------|---------------------------|-------------|--------------|----------------------------------|-----------------------------------|--------|--|--------------------|--|
|                                   | FEET   | INCH   |               | TOPSOIL         | GRAVEL SHOULDERS | EMULSIFIED ASPHALT | BITUMINOUS CONCRETE PAVEMENT | CHANGE ELEV. OF CB, DI, OR "H" | ALL PURPOSE EXC. RENTAL, TYPE I | POWER BROOM RENTAL | ENFORCED TRAFFIC OFFICERS | FLAGPERSONS | MOBILIZATION | TEMPORARY PAVEMENT MARKING-White | TEMPORARY PAVEMENT MARKING-Yellow | REPAIR |  |                    |  |
| ITEM NUMBER                       | 653.10 | 402.10 | 402.11        | 404.65          | 406.25           | 604.40             | 608.25                       | 608.30                         | 630.10                          | 630.15             | 635.10                    | 646.35      | 646.36       |                                  |                                   |        |  |                    |  |
| UNIT                              | FEET   | FT     | INCH          | CY              | CY               | TON                | CWT                          | TON                            | EA                              | HR                 | HR                        | HR          | HR           | HR                               | LS                                | LF     |  |                    |  |
| LUDLOW Vt-100<br>mm 0.000 ~ 3.850 | 20,328 | 24     | 3/4           |                 |                  |                    | 84                           | 2823                           |                                 |                    |                           |             |              |                                  |                                   |        |  | 3' PAVED SHOULDERS |  |
|                                   |        |        |               |                 |                  |                    |                              | 1259                           |                                 |                    |                           |             |              |                                  |                                   |        |  | LEVEL @ 327 T/m    |  |
| PROJ. EST.                        |        |        |               | 100             | 500              | 875                | 1                            | 50                             | 1                               | 5                  | 31                        | 207         | 207          | .37                              | 40656                             | 61754  |  |                    |  |
| ROUNDING                          |        |        |               |                 |                  |                    |                              | 18                             |                                 |                    | 9                         | 3           | 3            |                                  | 44                                | 46     |  |                    |  |
| TOTALS                            |        |        |               | 100             | 500              | 875                | 85                           | 4150                           | 1                               | 5                  | 40                        | 210         | 210          | .37                              | 40700                             | 61800  |  |                    |  |

PROJECT LUDLOW

NUMBER HMA 2630

SHEET 6 OF 24

TEMPORARY 4" REFLECTORIZED YELLOW LINE

| MILE | MILE  | LT    | RT    | Length<br>LT | Length<br>RT | Length<br>¢ | Length<br>Total<br>LT & RT |
|------|-------|-------|-------|--------------|--------------|-------------|----------------------------|
| 0.00 | 0.29  | Solid | Solid | 1531         | 1531         |             | 3062                       |
| 0.29 | 0.41  | Solid | Dash  | 633          | 158          |             | 791                        |
| 0.41 | 0.46  | Solid | Solid | 264          | 264          |             | 528                        |
| 0.46 | 0.55  | Dash  | Solid | 119          | 475          |             | 594                        |
| 0.55 | 0.59  | Dash  | Dash  |              |              | 53          | 53                         |
| 0.59 | 0.70  | Solid | Dash  | 581          | 145          |             | 726                        |
| 0.70 | 0.72  | Solid | Solid | 106          | 106          |             | 212                        |
| 0.72 | 0.96  | Dash  | Solid | 316          | 1267         |             | 1583                       |
| 0.96 | 1.20  | Dash  | Dash  |              |              | 317         | 317                        |
| 1.20 | 1.41  | Dash  | Solid | 277          | 1108         |             | 1385                       |
| 1.41 | 1.78  | Solid | Solid | 1954         | 1954         |             | 3907                       |
| 1.78 | 1.89  | Solid | Dash  | 581          | 145          |             | 726                        |
| 1.89 | 2.05  | Dash  | Dash  |              |              | 211         | 211                        |
| 2.05 | 2.15  | Dash  | Solid | 132          | 528          |             | 660                        |
| 2.15 | 2.23  | Solid | Solid | 422          | 422          |             | 844                        |
| 2.23 | 2.36  | Dash  | Solid | 172          | 686          |             | 858                        |
| 2.36 | 2.53  | Solid | Solid | 898          | 898          |             | 1795                       |
| 2.53 | 2.65  | Dash  | Solid | 158          | 634          |             | 792                        |
| 2.65 | 2.99  | Solid | Solid | 1795         | 1795         |             | 3590                       |
| 2.99 | 3.07  | Solid | Solid | 422          | 422          |             | 844                        |
| 3.07 | 3.26  | Solid | Solid | 1003         | 1003         |             | 2006                       |
| 3.26 | 3.37  | Dash  | Solid | 145          | 581          |             | 726                        |
| 3.37 | 3.850 | Solid | Solid | 2534         | 2534         |             | 5068                       |

END  
2-03

Yellow Total 31,277

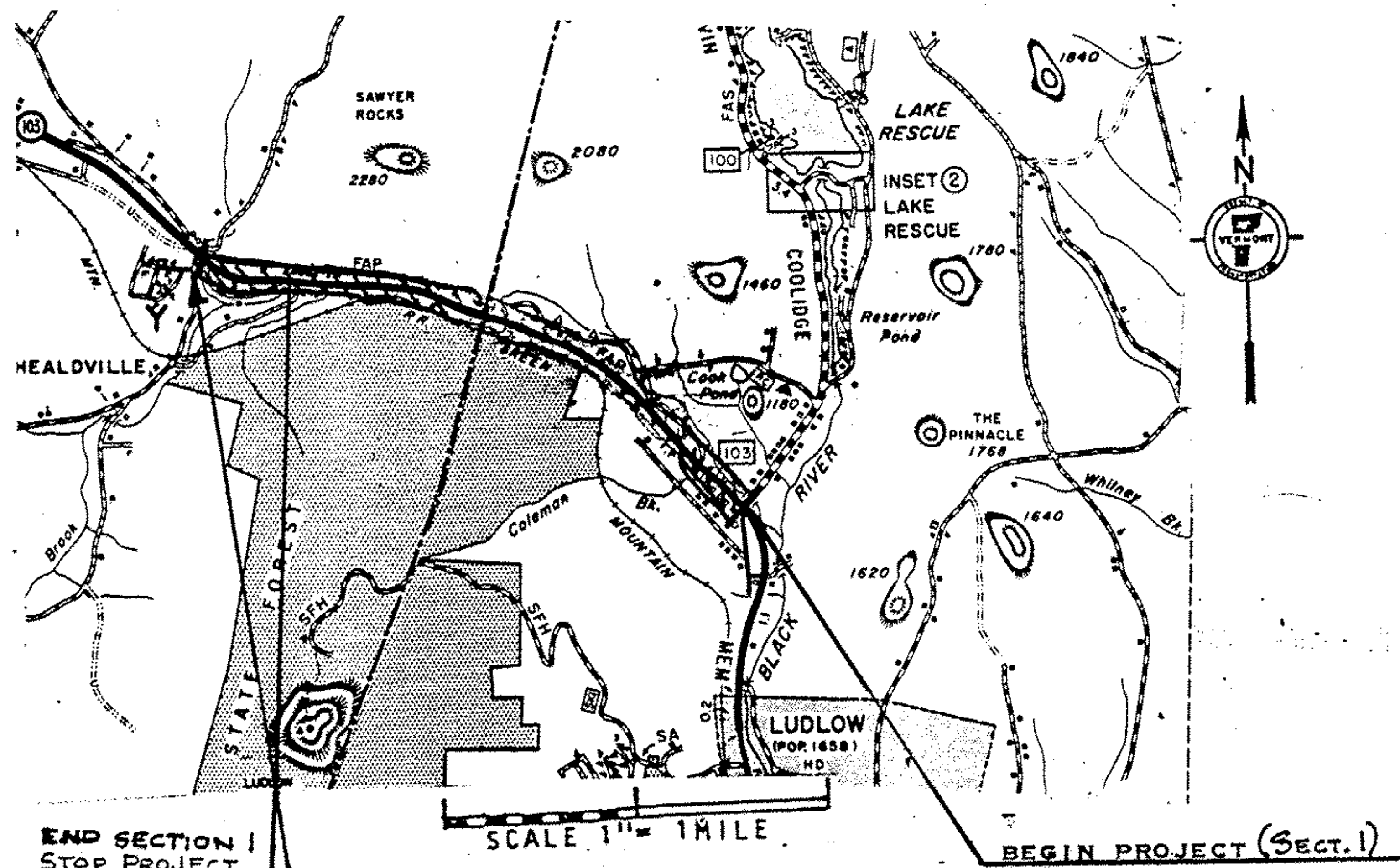
Assume 100% ¢ is lost during Shimming  
3096 x 2 = 6192 = Yellow Line

- 30,877 x 2 = 61,754      5THs (40x2) = 400  
30,877

TEMPORARY 4" REFLECTORIZED WHITE LINE

|      |       |        |        |  |  |  |            |
|------|-------|--------|--------|--|--|--|------------|
| 0.00 | 3.850 | 20,328 | 20,328 |  |  |  | 140,656.45 |
|------|-------|--------|--------|--|--|--|------------|

# PROJECT DESCRIPTION AND LOCATION



## SECTION I

ON VT 103 BEGINNING AT THE JUNCTION OF VT 103 AND VT 100 IN LUDLOW AT  
MM 4,059 AND EXTENDING 3.349 MILES TO MM 1.626 IN MT HOLLY

BRIDGE # 33  
DO NOT PAVE

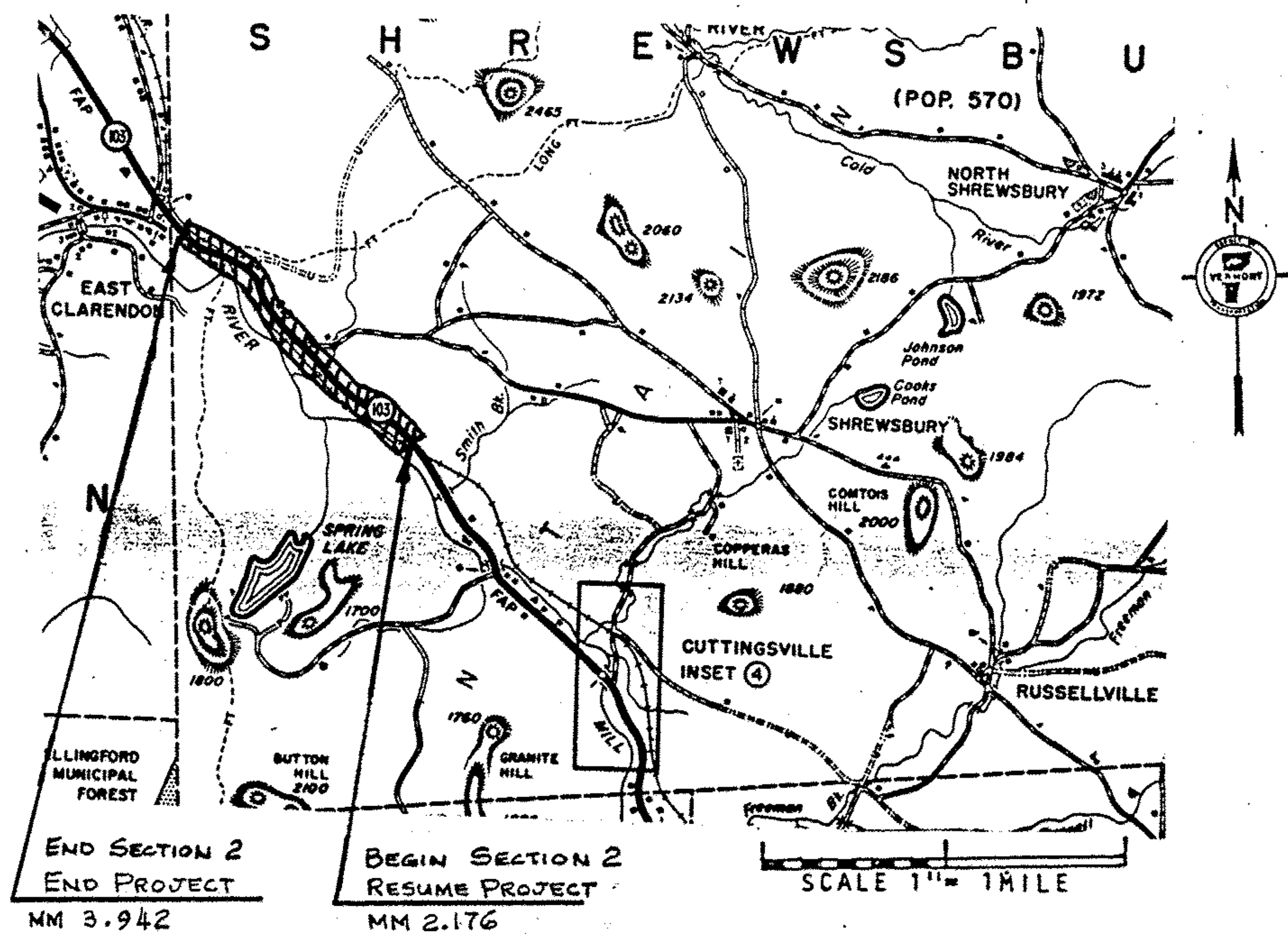
LENGTH OF SECTION I  
3.349 MILES  
17683 FEET

NO. F025-1(26)S

PROJECT LUDLOW-MT HOLLY - SHREWSBURY

SHEET 8 OF 24 SHEETS

# PROJECT DESCRIPTION AND LOCATION



## SECTION 2

ON VT 103-BEGINNING IN THE TOWN OF SHREWSBURY AT MM 2.176 AND  
EXTENDING 1.766 MILES TO MM 3.942

LENGTH OF SECTION 2  
1.766 MILES  
9325 FEET

### LENGTH OF PROJECT

SECT. 1 3.349 MILES  
17683 FEET

SECT. 2 1.766 MILES  
9325 FEET

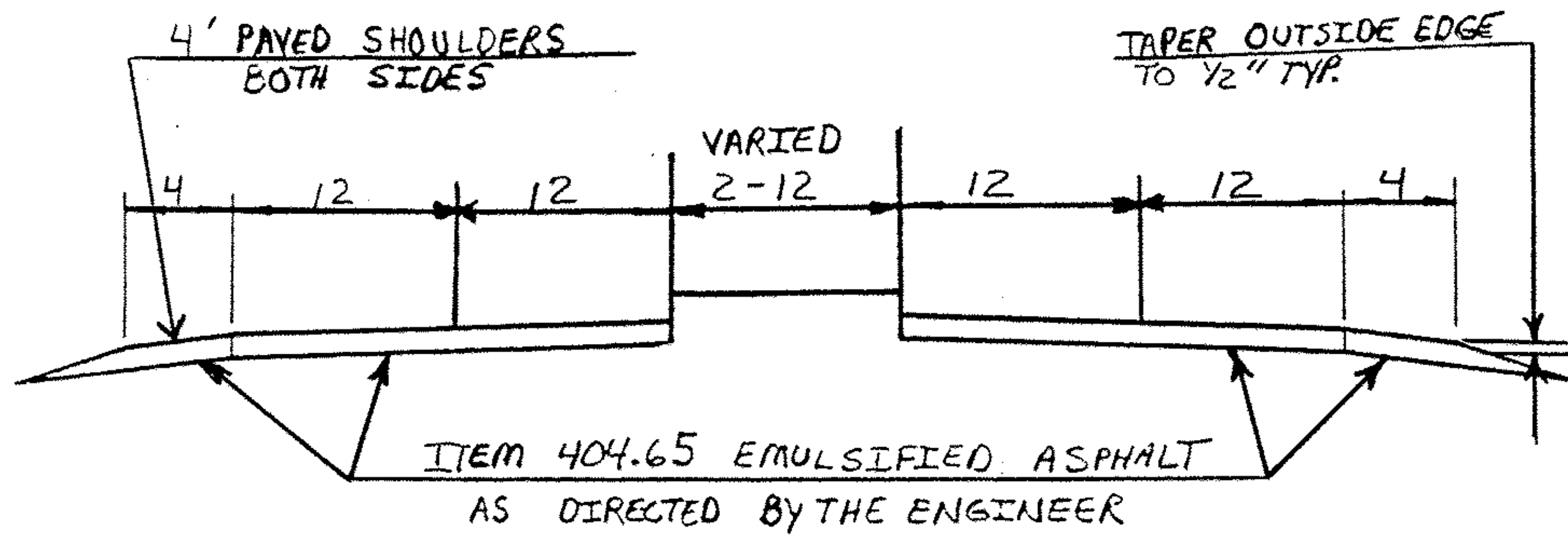
PROJECT TOTAL = 5.115 MILES  
27008 FEET

LUDLOW - MT. HOLLY -  
PROJECT SHREWSBURY

NO. F025-1(26)S  
SHEET 2 OF 24 SHEETS

# TYPICAL SECTIONS & DESIGN DATA

ITEM 406.25 BITUMINOUS CONCRETE PAVEMENT  
LEVELING COURSE TYPE III OR IV (545 TONS/MILE)  
AS DIRECTED BY THE ENGINEER  
1" WEARING COURSE TYPE III



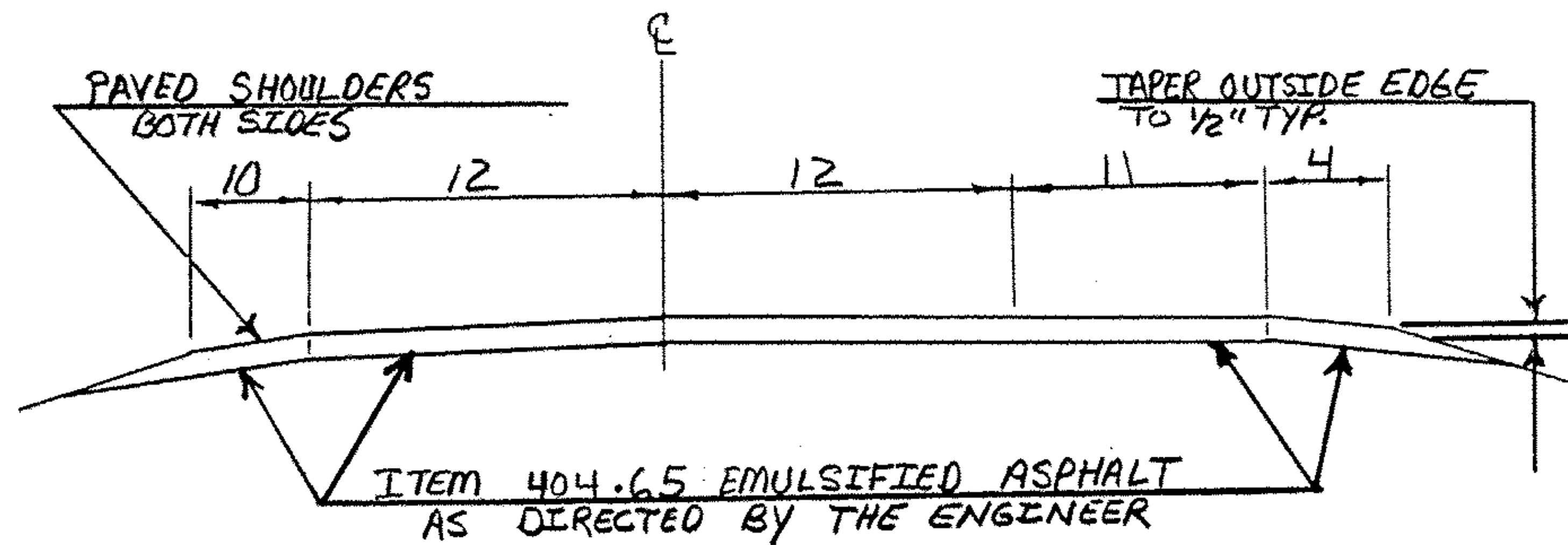
LUDLOW Vt. 103 MM 4.059 ~ MM 4.250

1982 ADT 3130

V = 50

# TYPICAL SECTIONS & DESIGN DATA

ITEM 406.25 BITUMINOUS CONCRETE PAVEMENT  
 LEVELING COURSE TYPE III OR IV (398 TONS/MILE)  
 AS DIRECTED BY THE ENGINEER  
 1" WEARING COURSE TYPE III



LUDLOW Vt. 103 mm 4.250 ~ mm 5.782

1982 ADT = 3130

v = 50

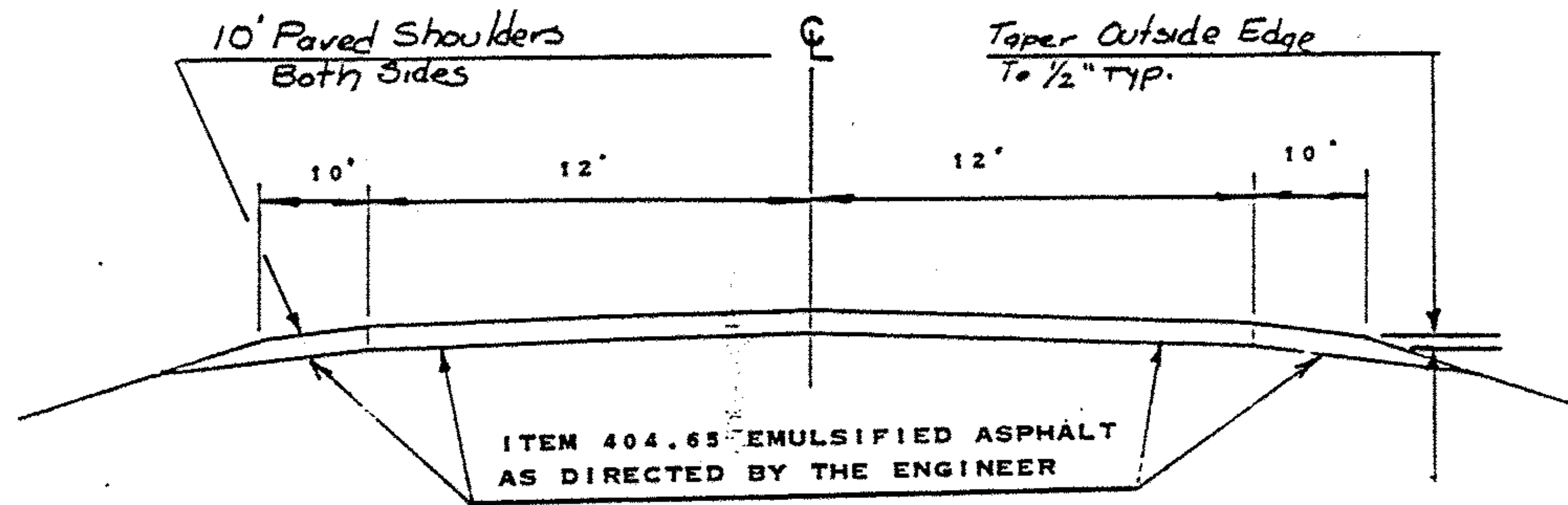
NO. F025-1(26)S

PROJECT LUDLOW - MT. HOLLY - SHREWSBURY

SHEET 10A OF 24 SHEETS

# TYPICAL SECTIONS & DESIGN DATA

ITEM 406.25 BITUMINOUS CONCRETE PAVEMENT  
LEVELING COURSE TYPE III OR IV (273 TONS/MILE)  
AS DIRECTED BY THE ENGINEER  
1" WEARING COURSE (2 1/4) TYPE III



Mt. HOLLY mm 0.000 - Mt. HOLLY MM 1.626  
VT. 103

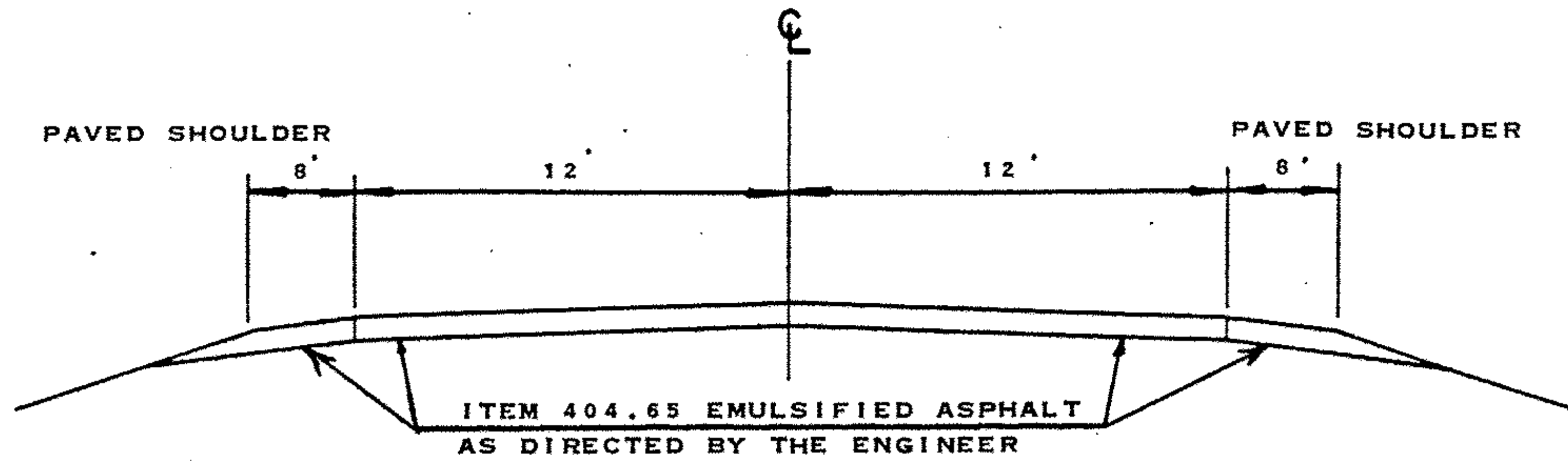
1980 ADT - 3130  
V = 50

PROJECT LUDLOW-MT HOLLY - SHREWSBURY

NO. FO25-1(26)S

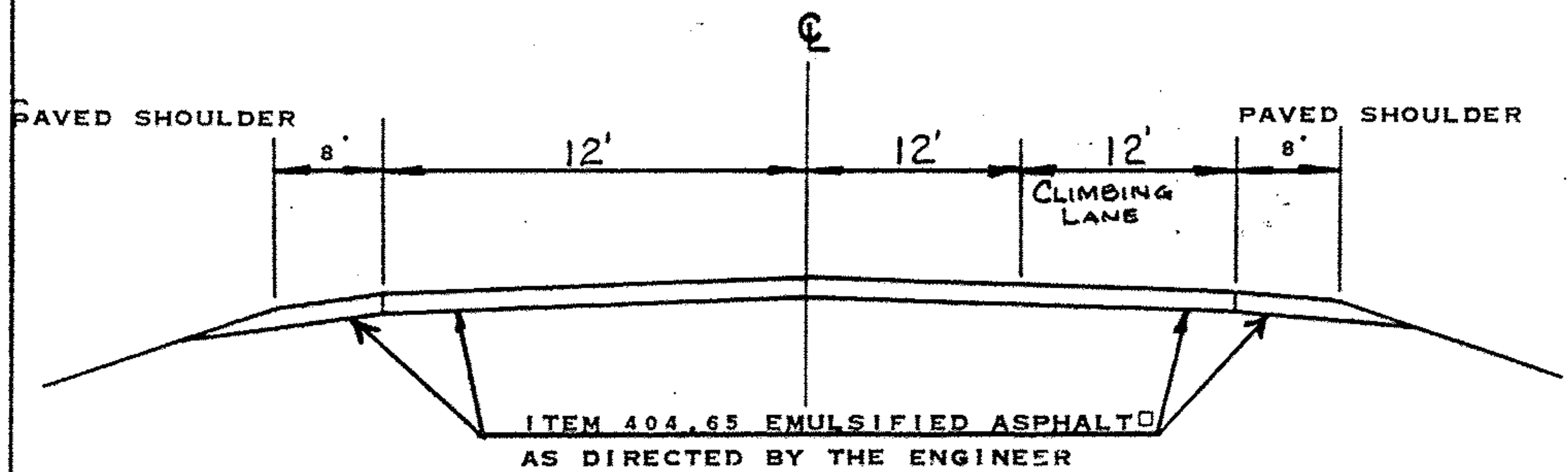
SHEET 10 OF 24 SHEETS

ITEM 406.25 BITUMINOUS CONCRETE PAVEMENT  
 LEVELING COURSE TYPE III OR IV (327 TONS/MILE)  
 AS DIRECTED BY THE ENGINEER  
 1 1/2" WEARING COURSE (1/4") TYPE III



SHREWSBURY  
 MM 2.176 MM 3.210

ITEM 406.25 BITUMINOUS CONCRETE PAVEMENT  
 LEVELING COURSE TYPE III OR IV (491 TONS/MILE)  
 AS DIRECTED BY THE ENGINEER  
 1 1/2" WEARING COURSE (1/4") TYPE III



SHREWSBURY  
 MM 3.210 MM 3.942

1982 ADT 4680  
 V 50

PROJECT LUDLOW-MT. HOLLY-SHREWSBURY

NO. F025-1(26)S  
 SHEET 11 OF 24

**PROJECT LENGTHS AND ITEM QUANTITIES**

| ITEM DESCRIPTION                       | OPTION |        |               |                 |                  |                  |                    |                    |                    |                   |                              |                            |             |  |
|--|--------|--------|---------------|-----------------|------------------|------------------|--------------------|--------------------|--------------------|-------------------|------------------------------|----------------------------|-------------|--|
|  | LENGTH | WIDTH  | OVERLAY DEPTH | LEVELING COURSE | GRAVEL SHOULDERS | GRAVEL SHOULDERS | EMULSIFIED ASPHALT | BITUMINOUS ASPHALT | POWER BROOM RENTAL | CONCRETE PAVEMENT | CHANGE ELEV. OF CB, DI OR MH | UNIFORMED TRAFFIC OFFICERS | FLAGPERSONS | MOBILIZATION   |
| ITEM NO                                | 402.10 | 402.11 | 404.65        | 406.25          | 608.30           | 604.40           | 630.10             | 630.15             | 635.10             |                   |                              |                            |             |  |
| UNIT                                   | FT.    | FT.    | IN.           | TONS/MI         | CY.              | TON              | CWT                | TON                | HR                 | EA.               | HR.                          | HR.                        | LS.         |  |
| LOCATION                               |        |        |               |                 |                  |                  |                    |                    |                    |                   |                              |                            |             |  |
| LUDLOW Vt. 103<br>MM 4.059 ~ 4.250     | 1008   | 48     | 1             | 545             |                  |                  | 8                  | 320                |                    | 2                 |                              |                            |             | 4' PAVED SHOULDERS<br>LESS MEDIAN                          |
| LUDLOW Vt. 103<br>MM 4.250 ~ 5.782     | 8089   | 35     | 1             | 398             |                  |                  | 55                 | 2446               |                    | 8                 |                              |                            |             | LEVEL @ 545 T/m<br>10' PAVED SHOULDER<br>4' PAVED SHOULDER |
| MT. HOLLY Vt. 103<br>MM 0.000 ~ 1.626  | 8585   | 24     | 1             | 273             |                  |                  | 52                 | 2331               |                    | -                 |                              |                            |             | LEVEL @ 398 T/m<br>10' PAVED SHOULDERS                     |
| SHREWSBURY Vt. 103<br>MM 2.176 ~ 3.210 | 5460   | 24     | 1 1/2         | 327             |                  |                  | 30                 | 2022               |                    | -                 |                              |                            |             | LEVEL @ 273 T/m<br>8' PAVED SHOULDERS                      |
| SHREWSBURY Vt. 103<br>MM 3.210 ~ 3.942 | 3865   | 36     | 1 1/2         | 491             |                  |                  | 28                 | 1861               |                    | -                 |                              |                            |             | LEVEL @ 327 T/m<br>8' PAVED SHOULDER<br>CLIMBING LANE      |
|  |        |        |               |                 |                  |                  |                    | 358                |                    |                   |                              |                            |             | LEVEL @ 491 T/m  |
| PROJECT ESTIMATE                       |        |        |               |                 | 250              | 440              | 5                  | 200                | 41                 | 10                | 551                          | 551                        |             |  |
| ROUNDING                               |        |        |               |                 | -                | 10               | 2                  | 66                 | 9                  | -                 | 4                            | 4                          |             |  |
| TOTALS                                 |        |        |               |                 | 250              | 450              | 180                | 11100              | 50                 | 10                | 555                          | 555                        | .63         |  |

PROJECT LUDLOW-MT HOLLY-SHREWSBURY NO. F025-1(26)S

SHEET 12 OF 24

# PROJECT LENGTHS AND ITEM QUANTITIES

| ITEM DESCRIPTION          | LENGTH | WIDTH  | TOPSOIL | DURABLE RAILROAD CROSSING PAVEMENT MARKING SYMBOL | DURABLE 24" STOP BAR | TRAFFIC SIGNS TYPE A | TRAFFIC SIGN POSTS TYPE A | REMARKS         |  |
|---------------------------|--------|--------|---------|---|----------------------|----------------------|---------------------------|-----------------|--|
| ITEM NUMBER               | 653.10 | 646.67 | 646.64  | 675.20  | 675.35               |                      |                           |                 |  |
| UNIT                      | FEET   | FT     | CY      | EA  | LF                   | SF                   | LB                        |                 |  |
| MM 4.07 RT.<br>MM 2.31 RT |        |        |         |   | 12                   | 6.3                  | 28                        | SHREWSBURY<br>↓ |  |
| MM 2.345 LT               |        |        |         |   | 12                   |                      |                           |                 |  |
| MM 3.89 RT                |        |        |         |   | 12                   |                      |                           |                 |  |
| MM 3.91 LT                |        |        |         |   | 12                   |                      |                           |                 |  |
| MM 2.17 RT                |        |        |         | 1   |                      |                      |                           |                 |  |
| MM 2.50 LT                |        |        |         | 1   |                      |                      |                           |                 |  |
| MM 3.75 RT                |        |        |         | 1   |                      |                      |                           |                 |  |
| MM 2.17 RT                |        |        |         |   |                      | 7.1                  | 24                        |                 |  |
| MM 2.50 LT                |        |        |         |   |                      | 7.1                  | 24                        |                 |  |
| MM 3.75 RT                |        |        |         |   |                      | 7.1                  | 24                        |                 |  |
| MM 3.46 RT.               |        |        |         |   |                      | 6.3                  | 28                        |                 |  |
| <b>PROJECT TOTAL</b>      |        |        | 110     | 3   | 48                   | 33.9                 | 128                       |                 |  |

FO25-1(26)S

# PROJECT LENGTHS AND ITEM QUANTITIES

| ITEM DESCRIPTION                   | LENGTH | WIDTH  |        |        |        |       |    | REMARKS |
|------------------------------------|--------|--------|--------|--------|--------|-------|----|---------|
| ITEM NUMBER                        | 646.21 | 646.60 | 646.35 | 646.36 | 608.25 |       |    |         |
| UNIT                               | FEET   | FT     | LF     | LF     | LF     | LF    | HR |         |
| MM4.06-4.24                        |        |        | 300    |        |        |       |    | LUDLOW  |
| MM 4.06-4.09                       |        |        |        | 150    |        |       |    | LUDLOW  |
| LUDLOW-MT HOLLY<br>MM4.059 ~ 1.626 |        |        |        |        | 36593  | 53466 | 5  |         |
| SHREWSBURY<br>MM2.18 ~ 3.942       |        |        |        |        | 19176  | 31716 | 5  |         |
| ROUNDING                           |        |        |        |        | 31     | 18    | -  |         |
| TOTAL                              |        |        | 300    | 150    | 56800  | 84200 | 10 |         |

PAINTED CURB  
 DURABLE 4" WHITE LINE  
 TEMPORARY PAVEMENT MARKING 4" WHITE  
 TEMPORARY PAVEMENT MARKING 4" YELLOW  
 ALL PURPOSE EXCAVATION RENTAL

F025-1(26)S

TEMPORARY 4" REFLECTORIZED YELLOW LINE

| MILE                       | MILE  | LT    | RT    | Length LT | Length RT | LENGTH $\phi$ | TOTAL Length |
|----------------------------|-------|-------|-------|-----------|-----------|---------------|--------------|
| 4.059                      | 4.38  | Solid | Solid | 1695      | 1695      |               | 3390         |
| 4.38                       | 4.46  | Solid | Dash  | 422       | 106       |               | 528          |
| 4.46                       | 4.50  | Dash  | Dash  |           |           | 53            | 53           |
| 4.50                       | 5.06  | Dash  | Solid | 739       | 2957      |               | 3696         |
| 5.06                       | 5.29  | Solid | Solid | 1214      | 1214      |               | 2428         |
| 5.29                       | 5.53  | Dash  | Solid | 317       | 1267      |               | 1584         |
| 5.53                       | 5.78  | Solid | Solid |           |           |               |              |
| TOWN/Line Ludlow-Mt. Holly |       |       | T/L   | T/L       | T/L       | T/L           | T/L          |
| 0.00                       | 0.02  | Solid | Solid | 1320      | 1320      |               | 2640         |
| 0.02                       | 0.16  | Solid | Dash  | 739       | 185       |               | 924          |
| 0.16                       | 0.41  | Dash  | Dash  |           |           | 330           | 330          |
| 0.41                       | 0.46  | Dash  | Solid | 66        | 264       |               | 330          |
| 0.46                       | 0.64  | Solid | Solid | 950       | 950       |               | 1900         |
| 0.64                       | 0.85  | Solid | Dash  | 1109      | 277       |               | 1386         |
| 0.85                       | 0.93  | Dash  | Dash  |           |           | 106           | 106          |
| 0.93                       | 0.98  | Dash  | Solid | 66        | 264       |               | 330          |
| 0.98                       | 1.23  | Solid | Solid | 1320      | 1320      |               | 2640         |
| 1.23                       | 1.37  | Dash  | Solid | 739       | 185       |               | 924          |
| 1.37                       | 1.626 | Solid | Solid | 1352      | 1352      |               | 2704         |

26,893

2 T.H.s (2x40) - 160

Assume 100% Lost During Shimming 26,733

$2 \times 26,733 = 53,466$

ITEM 646.21 - Painted Curb - 300 Ls (See Attached Sheet)  
 ITEM 646.60 - Durable 4" White - 150 Ls (See Attached Sheet)

TEMPORARY 4" REFLECTORIZED WHITE LINE

|           |       |                              |       |                  |      |                  |        |
|-----------|-------|------------------------------|-------|------------------|------|------------------|--------|
| 4.059     | 5.78  | Solid                        | Solid | 9087             | 9087 |                  | 18,174 |
| TOWN LINE |       |                              |       |                  |      |                  |        |
| 0.00      | 1.626 | Solid                        | Solid | 8585             | 8585 |                  | 17,170 |
| 4.059     | 4.095 | —                            | Dash  | Pass Lane Island |      |                  | 48     |
| 4.69      | 5.60  | —                            | Dash  | Climb Lane       |      |                  | 1201   |
|           |       |                              |       |                  |      | 4" White Total = | 36,593 |
| 4.07 RT   |       | New 30"x30" Lanes Merge Sign |       |                  |      |                  |        |
|           |       | New Post                     |       |                  |      |                  |        |

F025-1(26)S

LUDLOW-MT HOLLY



TEMPORARY 4" REFLECTORIZED YELLOW LINE

| MILE                               | MILE  | LT    | RT    | Length LT | Length RT | LENGTH          |                     |
|------------------------------------|-------|-------|-------|-----------|-----------|-----------------|---------------------|
| 2.176                              | 2.27  | Dash  | Solid | 124       | 496       |                 | 620                 |
| 2.27                               | 2.52  | Solid | Solid | 1320      | 1320      |                 | 2640                |
| 2.52                               | 2.68  | Solid | Dash  | 845       | 211       |                 | 1056                |
| 2.68                               | 2.73  | Solid | Solid | 264       | 264       |                 | 528                 |
| 2.73                               | 2.84  | Dash  | Solid | 145       | 581       |                 | 726                 |
| 2.84                               | 2.85  | Dash  | Dash  |           |           | 13              | 13                  |
| 2.85                               | 3.01  | Solid | Dash  | 845       | 211       |                 | 1056                |
| 3.01                               | 3.05  | Dash  | Dash  |           |           | 53              | 53                  |
| 3.05                               | 3.20  | Dash  | Solid | 198       | 792       |                 | 990                 |
| 3.20                               | 3.942 | Solid | Solid | 3918      | 3918      |                 | 7836                |
|                                    |       |       |       |           |           | SUB Total       | 15,518              |
|                                    |       |       |       |           |           | 2 T.H.S (40'x2) | = 160               |
| Assume 100% Lost During Shimming - |       |       |       |           |           |                 | 15,358              |
|                                    |       |       |       |           |           |                 | 2 x 15,358 = 30,716 |

646.67 DURABLE PAVEMENT MARKINGS - ITEM # Quan

|     |   |                     |      |
|-----|---|---------------------|------|
| M/M | 2.17 RT + Durable RR Crossing Pavement Marking Symbol | 646.67              | 1 ea |
| M/M | 2.50 LT + Durable RR Crossing Pavement Marking Symbol | 646.67              | 1 ea |
| M/M | 3.74 RT + Durable RR Crossing Pavement Marking Symbol | 646.67              | 1 ea |
|     |   | Item 646.67 Total = | 3 ea |

TEMPORARY 4" REFLECTORIZED WHITE LINE

|       |       |            |            |      |               |                  |        |
|-------|-------|------------|------------|------|---------------|------------------|--------|
| 2.176 | 3.942 | Solid Edge | Solid Edge | 9324 | 9324          |                  | 18,648 |
| 3.42  | 3.82  | Dash       | —          | 647  | Climbing Lane |                  | 528    |
|       |       |            |            |      |               | 4" White Total = | 19,176 |

INSTALL New RR Advance Warning Signs @ following locations below on New 2 Lb/5T YIELDING TYPE FLANGED CHANNEL POST.

| Location                             | Sign Legend | Sign Area                  | Post Length | Post Weight @ 2 Lb/5T |                                     |
|--------------------------------------|-------------|----------------------------|-------------|-----------------------|-------------------------------------|
| M/M 2.17 RT                          | RR Warning  | 7.1                        | 12'         | 24                    |                                     |
| M/M 2.50 LT                          | RR Warning  | 7.1                        | 12'         | 24                    | Note: See Old Signs Removals        |
| M/M 3.74 RT                          | RR Warning  | 7.1                        | 12'         | 24                    | as Subsidiary to other              |
| Totals                               |             | 21.3 SF                    |             | 72 Lbs                | Items on contract. All Removed      |
| Item 675.21 - Trussic Signs Type A = |             | 21.3 SF                    |             | 72 Lbs                | Signs & Posts will be same property |
|                                      |             | Trussic Sign POST Type A = |             | 72 Lbs                | of STATE and will be stockpiled     |
| See STANDARDS E-24A, E-29 & E-45     |             |                            |             |                       | in an Accessible Location for       |
|                                      |             |                            |             |                       | Pick up by District.                |

- A. CENTERLINE AND GORE AREA MARKINGS SHALL BE APPLIED AT THE END OF EACH WORKING DAY. THE FOLLOWING LAYOUT REQUIREMENTS SHALL BE MET:

NO PASSING BARRIER

SOLID STRIPES.

DASHED LINE

10-FOOT SOLID LINE WITH 30-FOOT GAP.

SOLID LINE - (GORE AREAS TO INCLUDE CHANNELIZING LINE AND DASHED LINE)

PER STANDARD SHEET E-50.

EDGE LINES

WHEN SPECIFIED, EDGE LINES ARE NOT REQUIRED UNTIL COMPLETION OF THE PROJECT. ON INTERSTATE PROJECTS, TEMPORARY EDGE LINES SHOULD BE APPLIED WHERE TRAFFIC VOLUMES AND SPEEDS ARE HIGH AND DELAY OF SEVERAL DAYS IS ANTICIPATED.

- B. TEMPORARY MARKINGS MAY CONSIST OF PAINT, TAPE OR RAISED PAVEMENT MARKERS (RPM'S). THE TAPE SHALL BE A RETRO-REFLECTIVE FILM ON A CONFORMABLE METALLIC BACKING THAT CAN BE PAVED OVER. TAPE MAY BE USED ON THE FINAL SURFACE COURSE IF IT WILL NOT INTERFERE WITH THE FINAL MARKING APPLICATION. THE RPM'S SHALL HAVE A SELF-ADHESIVE BACKING EASILY REMOVED BEFORE PAVING AND SHALL CONFORM TO THE FOLLOWING LAYOUT PATTERN: TEMPORARY TAPE MARKINGS WILL BE OFFSET AND REMOVED WHEN PROJECT IS FINISHED AND FINAL CENTERLINE PAINTED. THE TAPE SHALL BE THE TYPE THAT IS REMOVABLE INTACT AND NOT SEPERATE AT ANY TIME.

NO PASSING BARRIER

NO RPM'S ALLOWED.

DASHED LINE

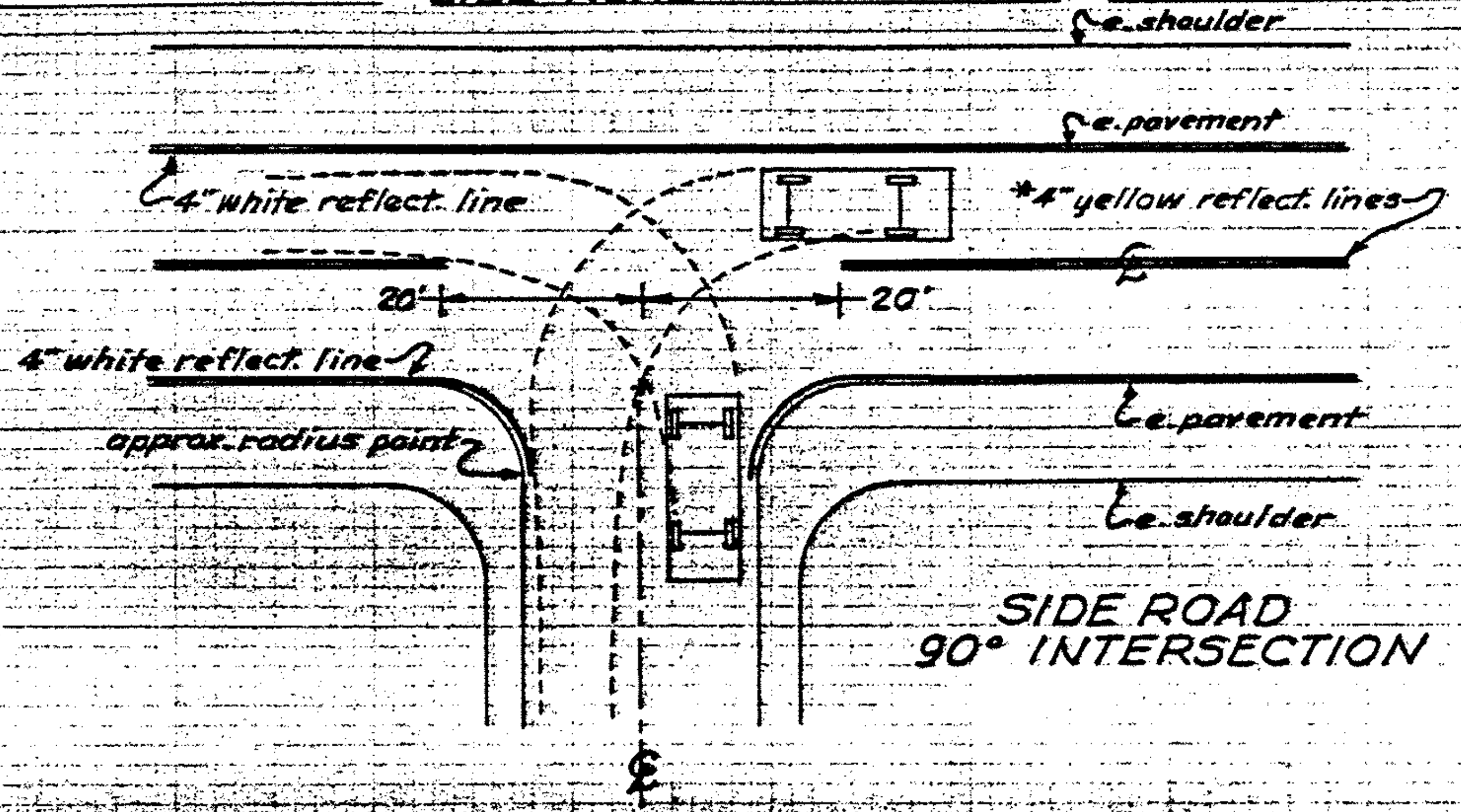
FOUR RETRO-REFLECTIVE RPM'S ON 3 1/2 FOOT CENTERS WITH A 30 FOOT GAP.

SOLID LINE - EDGE LINES

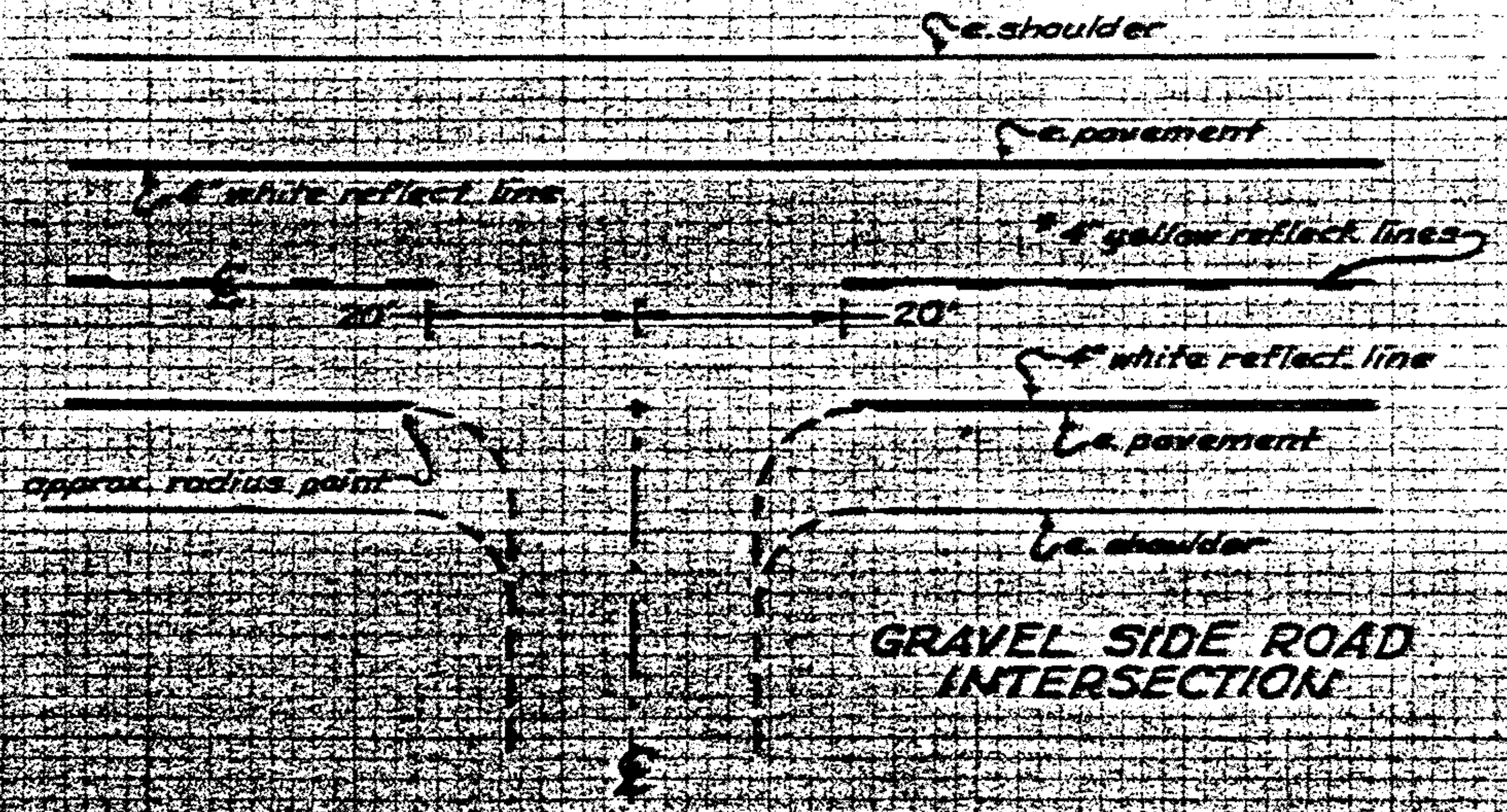
INTERSTATE MEDIAN SIDE-RETRO-REFLECTIVE RPM'S ON 4 TO 5 FOOT CENTER.  
DRIVERS RIGHT SIDE-RPM'S NOT ALLOWED.

- C. WHEN PAINT IS USED FOR TEMPORARY MARKING, AN ALTERNATE MATERIAL SUCH AS TAPE OR RPM'S SHALL BE ON HAND IN THE EVENT RAIN PREVENTS THE PAINT APPLICATION FROM BEING COMPLETED. ALL PAINT SHALL BE REFLECTORIZED.
- D. PAYMENT FOR PAINT AND TAPE SHALL BE COMPUTED ON A LINEAR FOOT BASIS AS IF PAINT WAS USED. PAYMENT FOR THE RPM'S SHALL BE COMPUTED AS IF AN EQUIVALENT PAINT LINE WAS USED. (FOR EXAMPLE, DASHED LINE PAID AS 10 FEET OF PAINT, SOLID LINE PAID AS THE TOTAL DISTANCE COVERED WITH THE MARKERS).
- E. PRIOR TO ACCEPTANCE, THE PAVEMENT MARKINGS SHALL BE COMPLETED FOR THE ENTIRE PROJECT BY THE CONTRACTOR AS DETAILED ON THE PLANS OR DIRECTED BY THE RESIDENT ENGINEER.

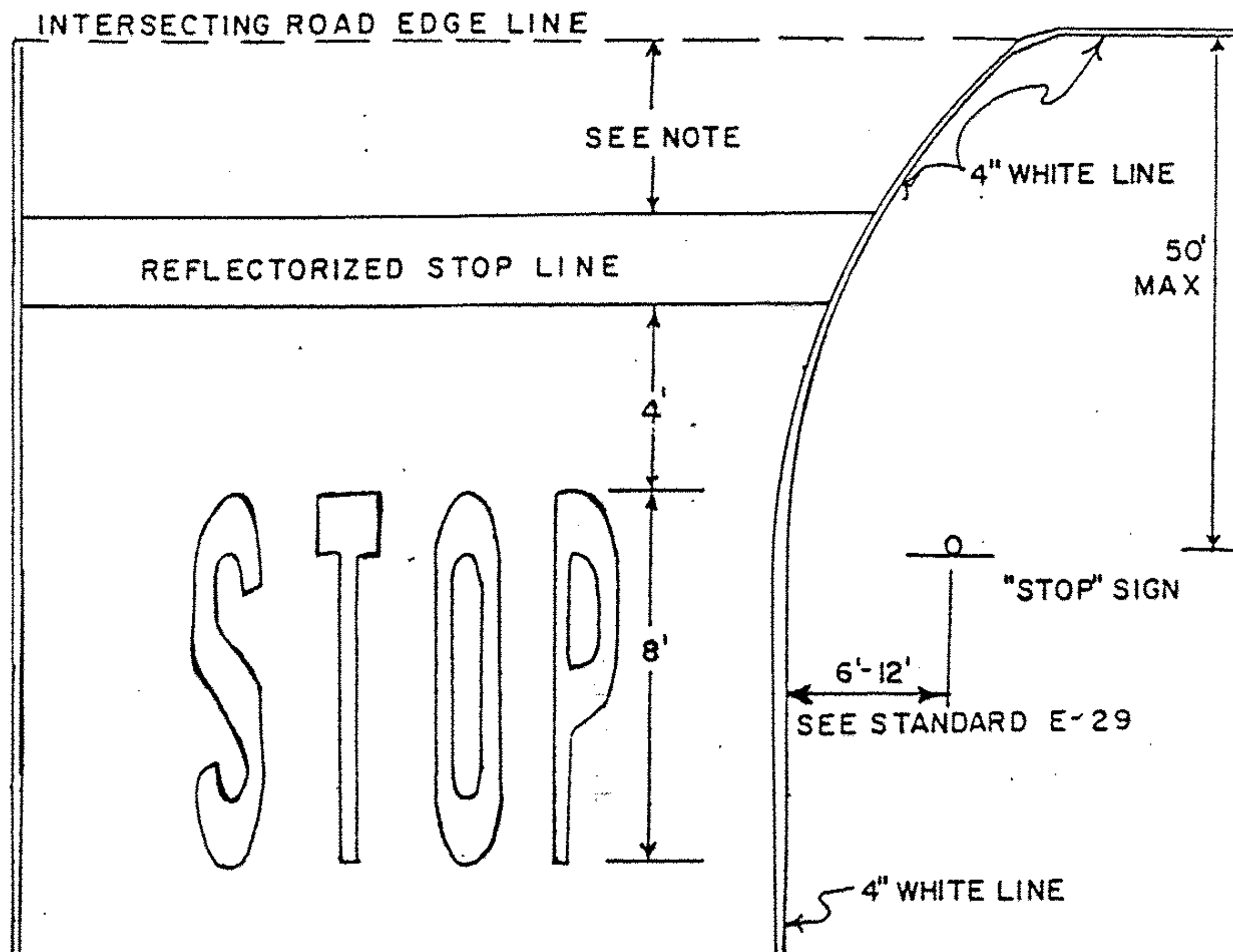
REVISED  
01/12/85



\* Centerline treatment shall consist of a minimum of 400 feet of solid line in advance of the intersection and shall be paired with either a solid or dashed line depending on sight distance availability in the opposing lane.



# DETAILS



NOTE.

PAVEMENT MARKING DETAILS

- I. THE STOP LINE SHOULD BE PLACED AT THE DESIRED STOPPING POINT, IN NO CASE MORE THAN 30 FEET OR LESS THAN 4' FROM THE NEAREST EDGE OF THE INTERSECTING ROADWAY.

PROJECT LUDLOW  
LUDLOW-MT HOLLY-SHREWSBURY

NO. HMA 2630  
F025-1(26)S  
SHEET 17 OF 24 SHEETS