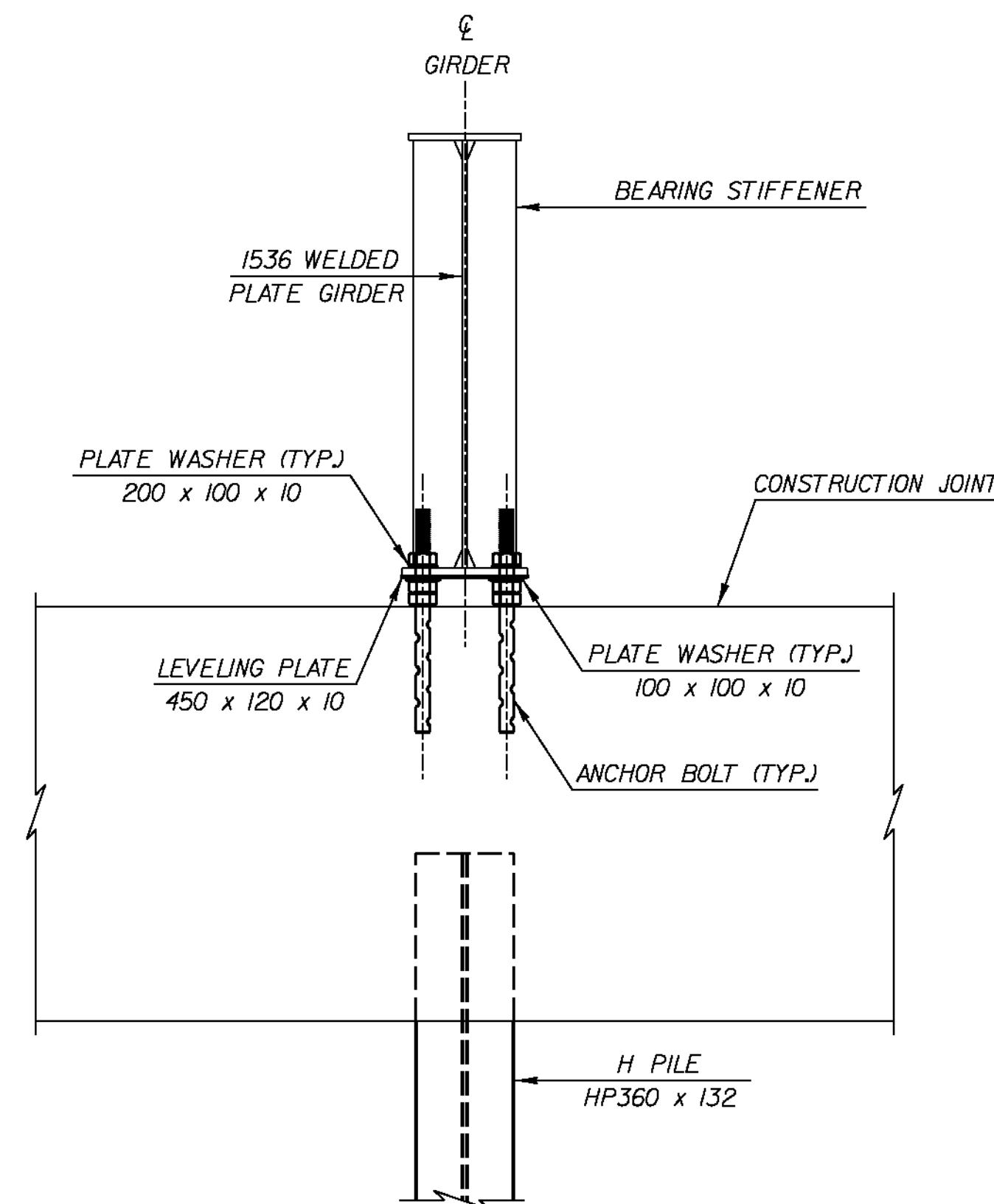


NOTES:

1. BOLTS SHALL BE ASTM F 568M, CLASS 8.8. NUTS SHALL BE M 291M.
2. ALL STEEL COMPONENTS USED IN THE ANCHORAGE/BEARING ASSEMBLY SHALL BE UNCOATED STEEL MEETING THE REQUIREMENTS OF SUBSECTION 506.14, EXCEPT AS NOTED ABOVE.

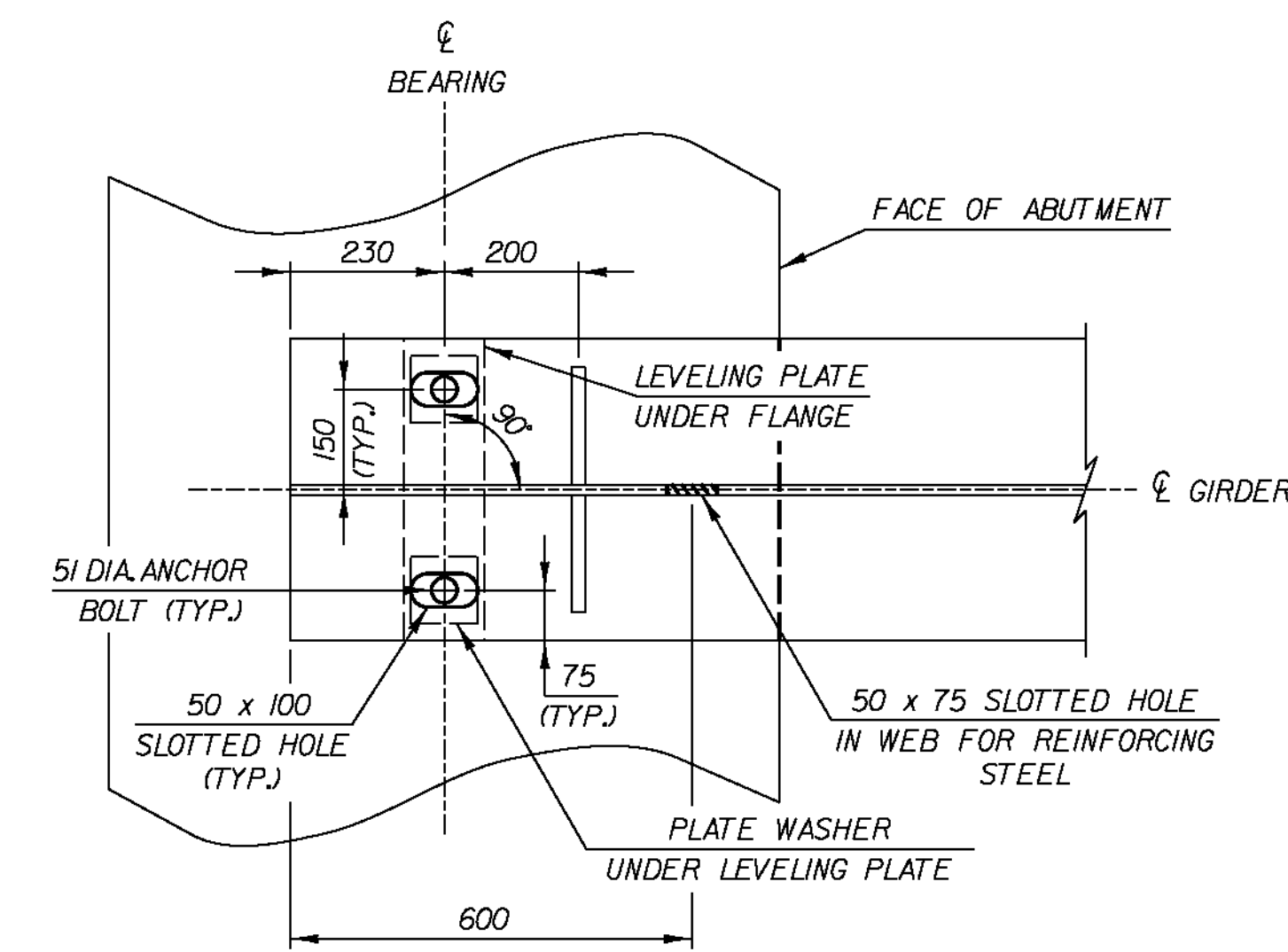
DURING CONSTRUCTION

SCALE: 1:20



SECTION C-C

SCALE: 1:20

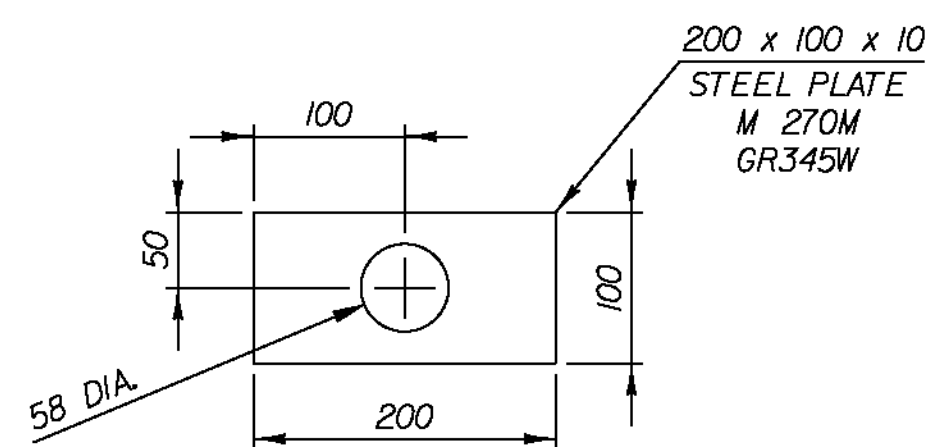


END OF GIRDER BOTTOM FLANGE AT ABUTMENT

SCALE: 1:10

PLATE WASHER DETAIL (200 x 100)

SCALE: 1:5



LEVELING PLATE DETAIL

SCALE: 1:5

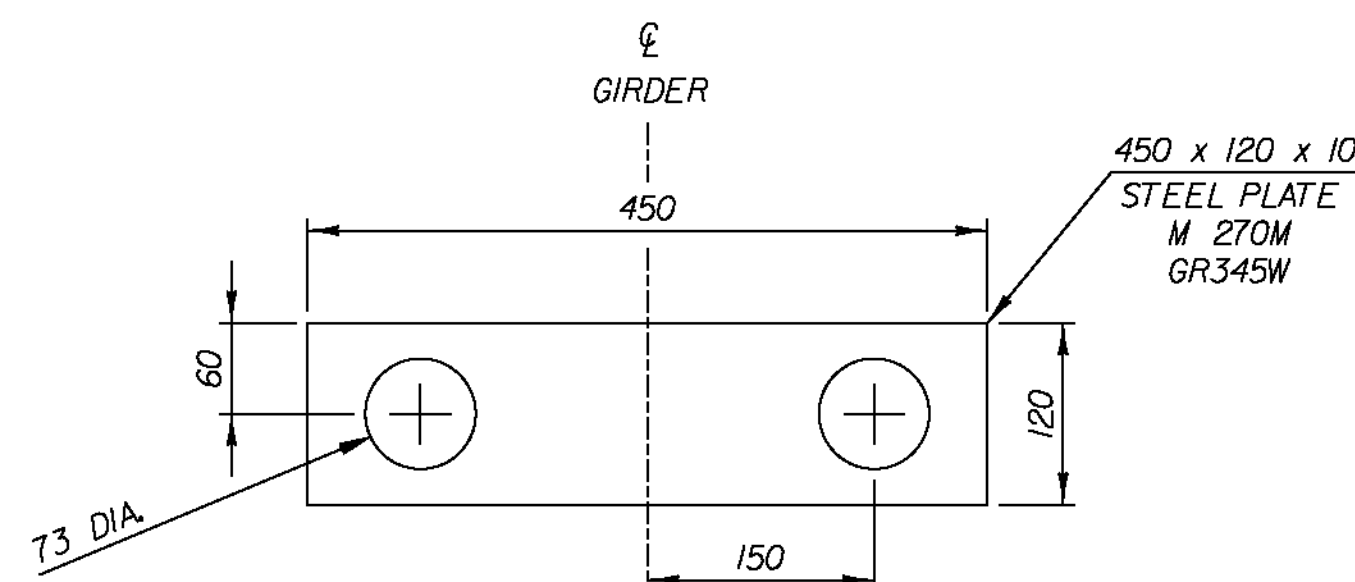
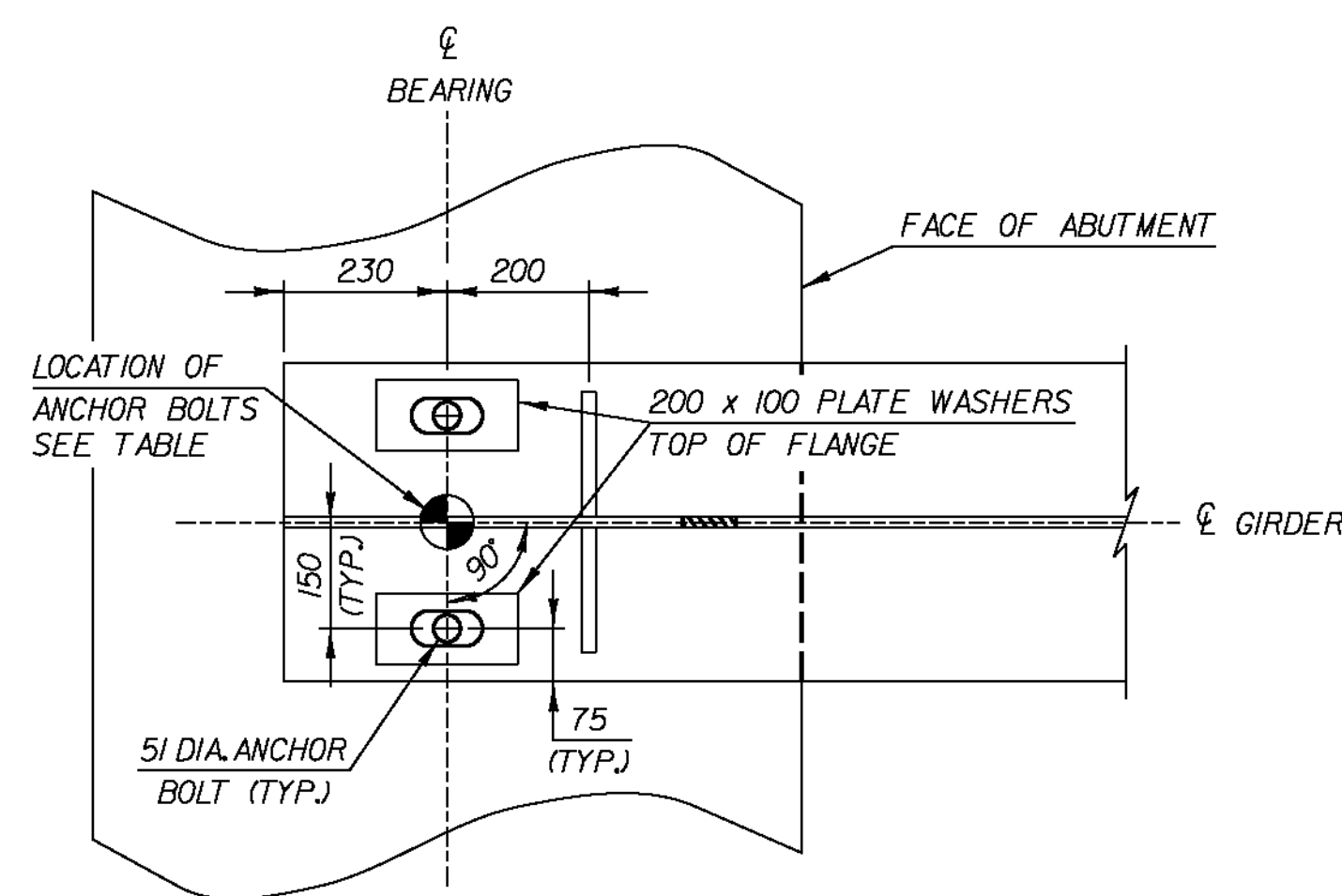
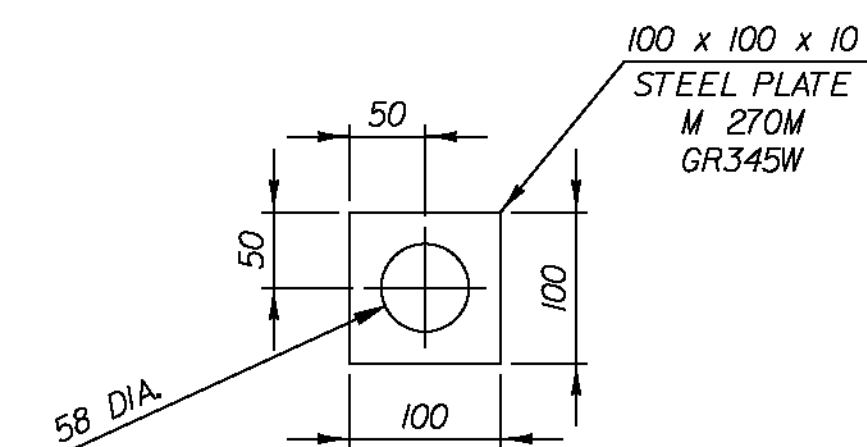


PLATE WASHER DETAIL (100 x 100)

SCALE: 1:5



BEARING LAYOUT DIAGRAM

SCALE: 1:10

	OFFSET	ABUTMENT NO.1		ABUTMENT NO.2	
		STATION	ELEVATION	STATION	ELEVATION
GIRDER 1	4 500 L	1+116.00	46.487	1+161.00	45.679
GIRDER 2	2 250 L	1+116.00	46.543	1+161.00	45.812
GIRDER 3	0	1+116.00	46.599	1+161.00	45.946
GIRDER 4	2 250 R	1+116.00	46.655	1+161.00	46.080
GIRDER 5	4 500 R	1+116.00	46.711	1+161.00	46.213

NOTE: ELEVATIONS ARE GIVEN AT THE BOTTOM OF THE BOTTOM FLANGE PLATE AT THE LOCATION SHOWN IN THE BEARING LAYOUT DIAGRAM.

COSTS FOR THE ANCHOR BOLTS, NUTS, PLATE WASHERS, AND THE LEVELING PLATES SHALL BE MADE USING ITEM 53114 "BEARING DEVICE ASSEMBLY, INTEGRAL ABUTMENT."

DATUM

VERTICAL NAVD88
HORIZONTAL NAD83(92)

PROJECT NAME: CORNWALL
PROJECT NUMBER: BRS 0172(6)

FILE NAME: z85e042brdde+.dgn
PROJECT LEADER: MARTHA EVANS-MONGEON
DESIGNED BY: M. CRUZ
BEARING DETAILS

PLOT DATE: 2/5/2010
DRAWN BY: P. GREENBERG
CHECKED BY: M. CRUZ
SHEET 98 OF 144