

**CLEARING AND GRUBBING
INCLUDING INDIVIDUAL TREES AND STUMPS**

I+260.00 ~ I+380.00
I+345.4 RT (M) ASH
I+366.1 RT (M) BOX ELDER
I+373.4 RT (M) BOX ELDER

**EXCAVATION OF SURFACES
AND PAVEMENTS**

I+296.0 LT ~ I+304.0 LT

AGGREGATE SURFACE COURSE

I+260 LT. ~ I+304 LT. - 358.0 SM

EXISTING DRAINAGE

2 EXISTING 600 mm STONE BOX CULVERT - REMOVE

3 EXISTING 450 mm CMP - REMOVE

NEW DRAINAGE

2 I+300.000 RT. ~ I+306.220 LT.
NEW 900 mm x 19.5 m CAAP/PCCSP
W/ REINF. CONC. STRAIGHT HEADWALL @ INLET
W/ CAAPES/PCCSPES @ OUTLET

3 I+360.558 RT. ~ I+364.673 LT
NEW 450 mm x 18.9 m CAAP/PCCSP
W/ REINF. CONC. STRAIGHT HEADWALL @ INLET
W/ CAAPES/PCCSPES @ OUTLET

200 MM UNDERDRAIN PIPE

9 I+260.0 LT. ~ I+300.0 LT.
NEW 200mm x 54.6m UNDERDRAIN
W/ FB @ I+300.0 LT.

6 I+300.0 LT. ~ I+350.0 LT.
NEW 200mm x 48.8m UNDERDRAIN
W/ FB @ I+350.0 LT.

9 I+260.0 RT. ~ I+340.0 RT.
NEW 200mm x 83.6m UNDERDRAIN
W/ FB @ I+260.0 RT.

9 I+340.0 RT. ~ I+380.0 RT.
NEW 200mm x 80.4m UNDERDRAIN
w/ FB @ I+340.0 RT.

200 MM UNDERDRAIN CARRIER PIPE

7 I+350.0 LT. ~ I+364.1 LT.
NEW 200mm x 14.5m UNDERDRAIN CARRIER PIPE

STONE FILL, TYPE I

I+300.0 RT. - 3 600 WIDE x 1000 LONG
I+306.5 LT. - 2 400 WIDE x 8 600 LONG
I+360.0 RT. - 1800 WIDE x 1000 LONG
I+364.7 LT. - 0 900 WIDE x 3 000 LONG

REMOVAL OF EXISTING FENCE

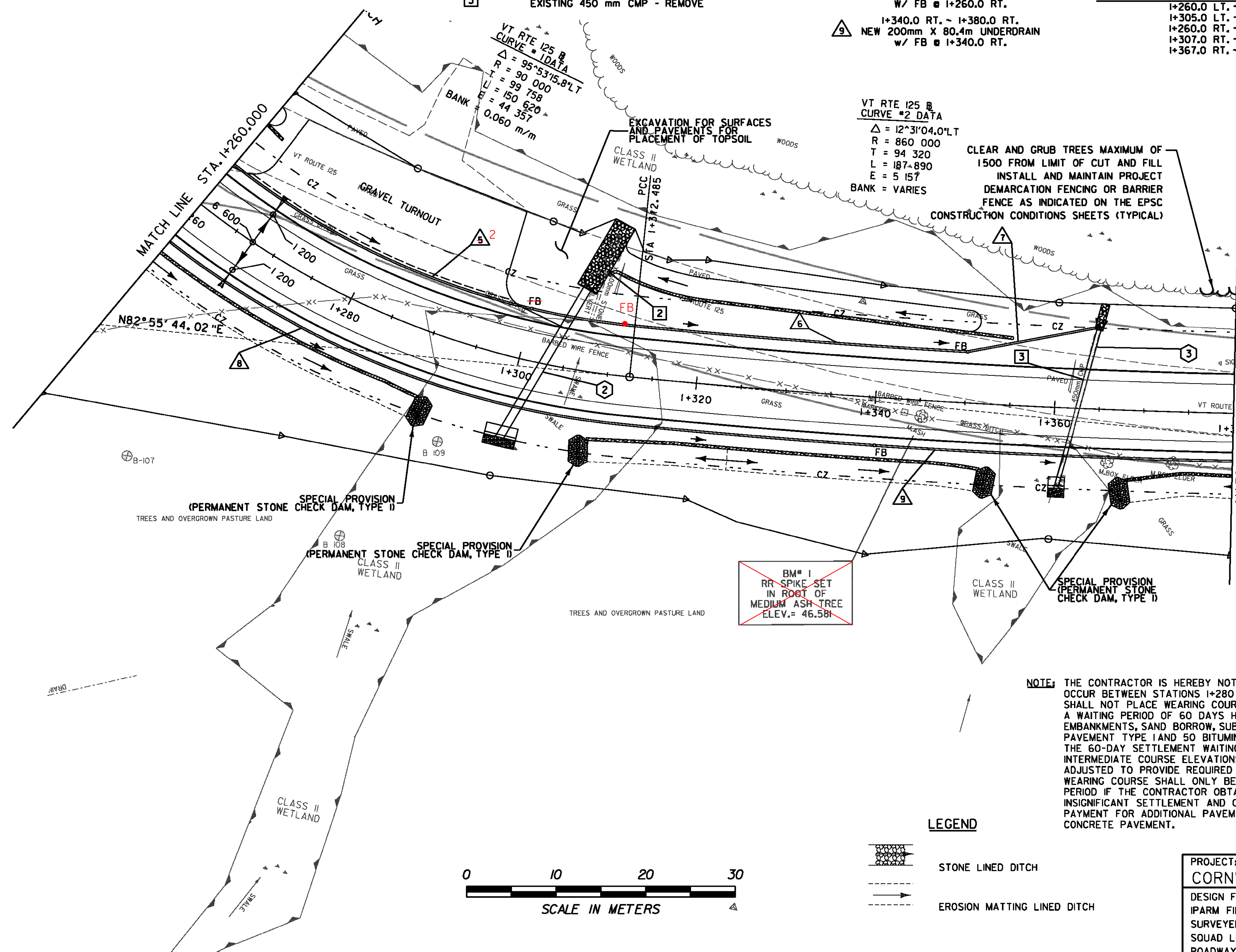
I+260.0 RT. ~ I+380.0 RT.

GRUBBING MATERIAL

I+298.0 RT. ~ I+302.0 RT.
I+360.0 RT. ~ I+362.0 RT.

**SPECIAL PROVISION
(STONE DIAPHRAGM FOR GRASS CHANNEL)**

I+260.0 LT. ~ I+263.0 LT.
I+305.0 LT. ~ I+355.0 LT.
I+260.0 RT. ~ I+290.0 RT.
I+307.0 RT. ~ I+352.0 RT.
I+367.0 RT. ~ I+380.0 RT.



VT RTE 125 @
CURVE #2 DATA
Δ = 12°31'04.0" LT
R = 860 000
T = 94 320
L = 187-890
E = 5 157
BANK = VARIES

VT RTE 125 @
CURVE #1 DATA
Δ = 95°53'15.8" LT
R = 90 000
T = 99 758
L = 150 620
E = 44 357
0.060 m/m

CLEAR AND GRUB TREES MAXIMUM OF
1500 FROM LIMIT OF CUT AND FILL
INSTALL AND MAINTAIN PROJECT
DEMARCATON FENCING OR BARRIER
FENCE AS INDICATED ON THE EPSC
CONSTRUCTION CONDITIONS SHEETS (TYPICAL)

BM# 1
RR SPIKE SET
IN ROOT OF
MEDIUM ASH TREE
ELEV. = 46.581

NOTE: THE CONTRACTOR IS HEREBY NOTIFIED THAT APPROXIMATELY 50 MM OF SETTLEMENT MAY OCCUR BETWEEN STATIONS I+280 AND I+330. TO ALLOW FOR SETTLEMENT THE CONTRACTOR SHALL NOT PLACE WEARING COURSE OF PAVEMENT BETWEEN STATIONS I+280 ~ I+330 UNTIL A WAITING PERIOD OF 60 DAYS HAS PASSED AFTER THE CONSTRUCTION OF THE EMBANKMENTS, SAND BORROW, SUBBASE AND PLACEMENT OF 75 BITUMINOUS CONCRETE PAVEMENT TYPE I AND 50 BITUMINOUS CONCRETE PAVEMENT TYPE II. UPON COMPLETION OF THE 60-DAY SETTLEMENT WAITING PERIOD THE CONTRACTOR SHALL VERIFY TOP OF INTERMEDIATE COURSE ELEVATIONS. IF NEEDED, DEPTH OF WEARING COURSE SHALL BE ADJUSTED TO PROVIDE REQUIRED FINAL PAVEMENT ELEVATIONS. PLACEMENT OF THE WEARING COURSE SHALL ONLY BE ALLOWED PRIOR TO THE END OF THE 60-DAY WAITING PERIOD IF THE CONTRACTOR OBTAINS SUFFICIENT SETTLEMENT DATA THAT INDICATES INSIGNIFICANT SETTLEMENT AND ONLY WHEN IT IS APPROVED BY THE RESIDENT ENGINEER. PAYMENT FOR ADDITIONAL PAVEMENT SHALL BE MADE UNDER ITEM 406.25 BITUMINOUS CONCRETE PAVEMENT.

LEGEND

- STONE LINED DITCH
- EROSION MATTING LINED DITCH



DATUM	
VERTICAL	NAVD 88
HORIZONTAL	NAD 83(92)

PROJECT: CORNWALL	PROJECT NO. : BRS 0172(6)
DESIGN FILE NAME: z85e042bdr.dgn	PLOT DATE: 2/15/2010
IPARM FILE NAME:	SURVEY DATE: 1996&1999
SURVEYED BY: VTRANS & VT SURVEY	DRAWN BY: ERIK ATKINS
SQUAD LEADER: MARTHA EVANS-MONGEON	SHEET: 24 OF 144
ROADWAY LAYOUT SHEET 3	