

**CLEARING AND GRUBBING,  
INCLUDING INDIVIDUAL TREES AND STUMPS**

- I+100.00 ~ I+260.000
- I+119.3 LT (L) ELM
- I+160.8 RT (S) BOX ELDER
- I+168.3 RT (S) ELM
- I+179.1 RT (S) ELM
- I+184.8 RT (S) ELM
- I+186.5 RT (S) ELM
- I+186.9 RT (S) ELM
- I+189.1 RT (S) ELM

**BRIDGE RAILING, GALVANIZED NETC 2 RAIL**

- I+109.42 LT. ~ I+167.23 LT.
- I+109.42 RT. ~ I+166.67 RT.

**EXISTING DRAINAGE**

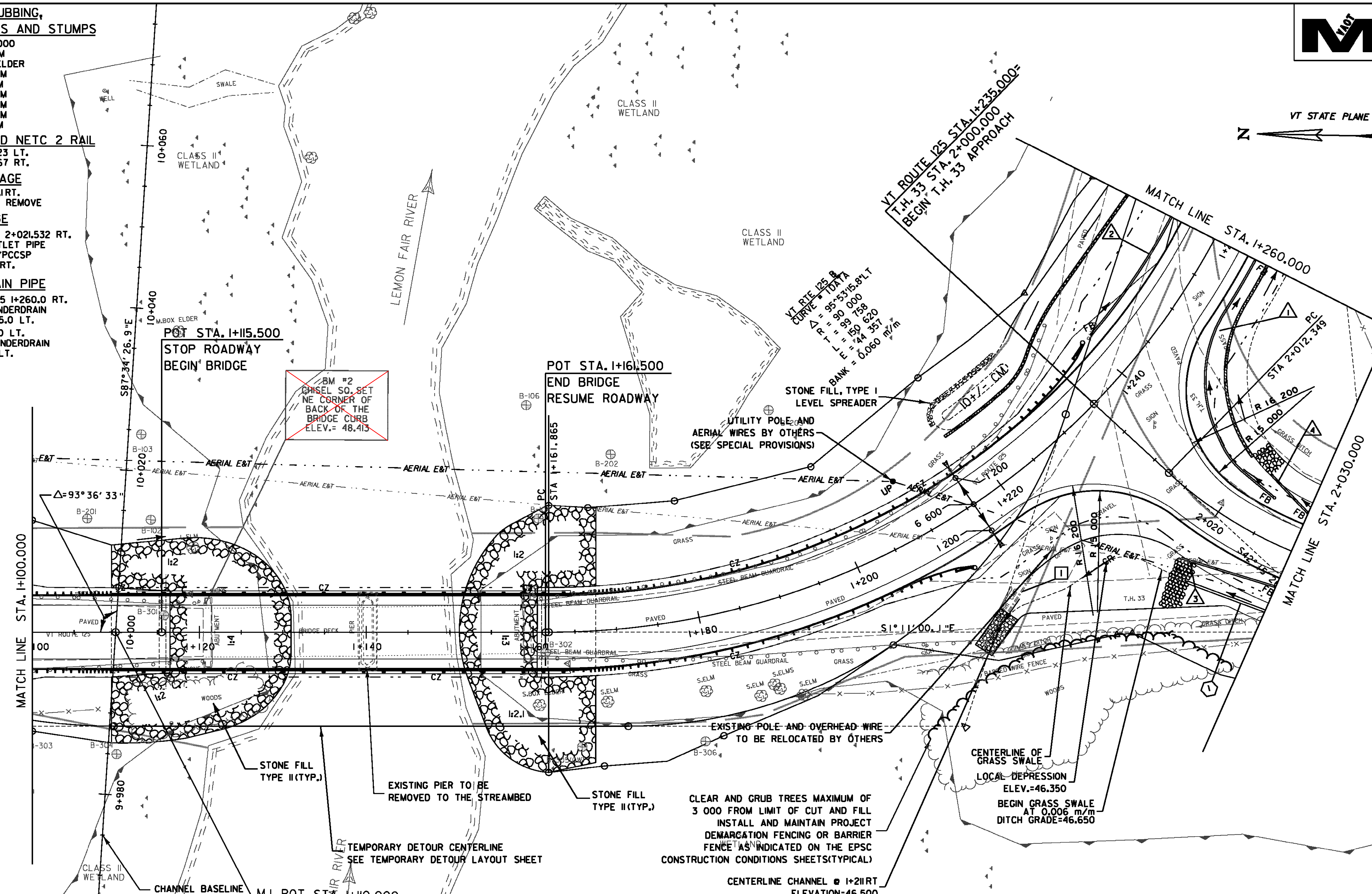
- I+208.2 RT. ~ I+218.1 RT.
- EXISTING 150 mm CMP - REMOVE

**NEW DRAINAGE**

- TH 33 2+032.188 RT. ~ TH 33 2+021.532 RT.
- NEW 300mm x 11.8m OUTLET PIPE
- CPEP (SL)/RCP/CAAP/PCCSP
- W/MH @ 2+032.188 RT.

**200 MM UNDERDRAIN PIPE**

- TH 33 2+025.0 LT. ~ VT 125 I+260.0 RT.
- NEW 200mm x 33.7m UNDERDRAIN
- w/ FB @ TH 33 2+025.0 LT.
- I+241.0 LT. ~ I+260.0 LT.
- NEW 200mm x 54.6 m UNDERDRAIN
- w/ FB @ I+241.0 LT.



BM #2  
CHISEL SQ. SET  
NE CORNER OF  
BACK OF THE  
BRIDGE CURB  
ELEV. = 48.413

**DATUM**

VERTICAL	NAVD 88
HORIZONTAL	NAD 83(92)

**200 MM UNDERDRAIN CARRIER PIPE**

TH 33 2+030.0 RT. ~ TH 33 2+020.0 RT.  
NEW 200mm x 11.7 m UNDERDRAIN CARRIER PIPE  
W/ FB @ TH 33 2+030.0 RT.

TH 33 2+030.0 LT. ~ TH 33 2+023.0 LT.  
NEW 200mm x 6.5 m UNDERDRAIN CARRIER PIPE  
W/ FB @ TH 33 2+030.0 LT.

**REMOVAL OF EXISTING FENCE**

I+100.0 RT. ~ I+108.0 RT.  
I+189.8 RT. ~ TH 33 2+030.0 RT.  
TH 33 2+030.0 LT. ~ VT 125 I+260 RT.

**STEEL BEAM GUARDRAIL, GALVANIZED**

I+173.93 RT. ~ I+201.05 RT.  
I+175.26 LT. ~ I+227.42 LT.

**STONE FILL, TYPE I**

VT 125 I+208 RT. ~ VT RTE 125 I+212 RT.  
VT RTE 125 I+217.0 LT. ~ I+231.0 LT - LEVEL SPREADER  
TH 33 2+019 RT. ~ 2+030 RT.  
TH 33 2+020 LT. ~ 2+030 LT.



**MANUFACTURED TERMINAL SECTION, FLARED**

I+100.00 RT. ~ I+101.80 RT.  
I+100.00 LT. ~ I+101.80 LT.  
I+201.05 RT. ~ I+211.73 RT. (DELTA=10.68M)  
I+227.42 LT. ~ I+239.55 LT. (DELTA=12.13M)

**GUARDRAIL APPROACH SECTION,  
GALVANIZED NETC 2 RAIL**

I+101.80 LT. ~ I+109.42 LT.  
I+101.80 RT. ~ I+109.42 RT.  
I+166.67 RT. ~ I+173.93 RT. (DELTA=7.26)  
I+167.23 LT. ~ I+175.26 LT. (DELTA=8.03)

- LEGEND**
- STONE LINED DITCH
  - EROSION MATTING LINED DITCH

**REMOVAL AND DISPOSAL OF GUARDRAIL**

I+100 LT. ~ I+120.8 LT.  
I+100 RT. ~ I+120.6 RT.  
I+160.1 RT. ~ I+210.3 RT.  
I+160.6 LT. ~ I+238.6 LT.

**SPECIAL PROVISION  
(STONE DIAPHRAGM FOR GRASS CHANNEL)**

VT 125 I+218.0 LT. ~ I+260.0 LT  
TH 33 2+020 LT. ~ VT 125 I+260.0 RT.

PROJECT: <b>CORNWALL</b>	PROJECT NO. : <b>BRS 0172(6)</b>
DESIGN FILE NAME: z85e042bdr.dgn	PLOT DATE: 2/11/2010
IPARM FILE NAME:	SURVEY DATE: 1996&1999
SURVEYED BY: VTRANS & VT SURVEY	DRAWN BY: ERIK ATKINS
SQUAD LEADER: MARTHA EVANS-MONGEON	SHEET: 23 OF 144
ROADWAY LAYOUT SHEET 2	