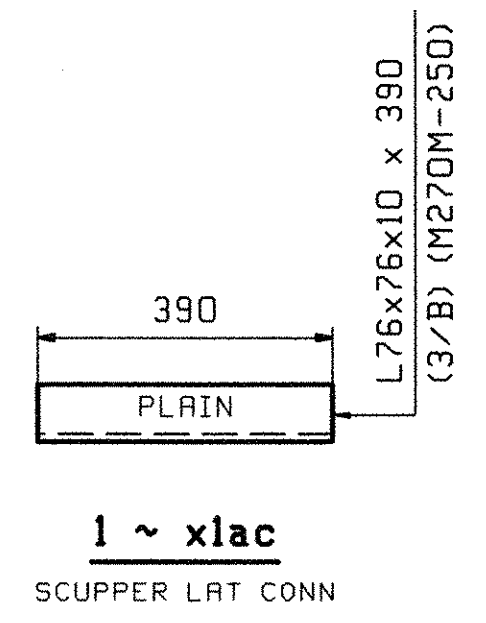
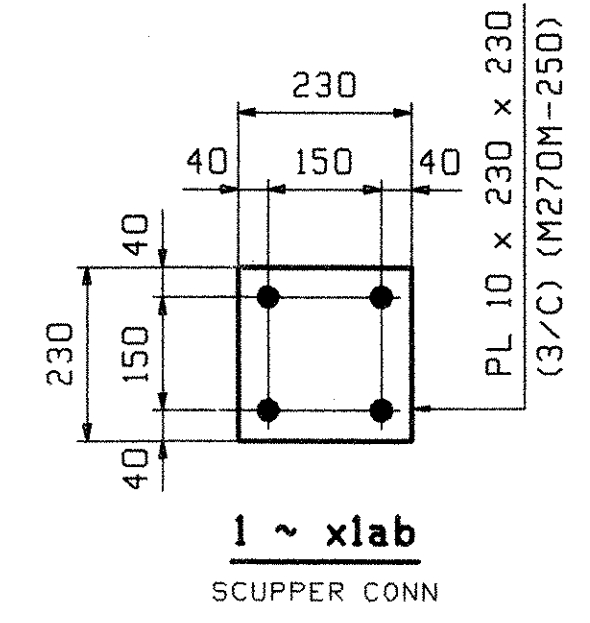
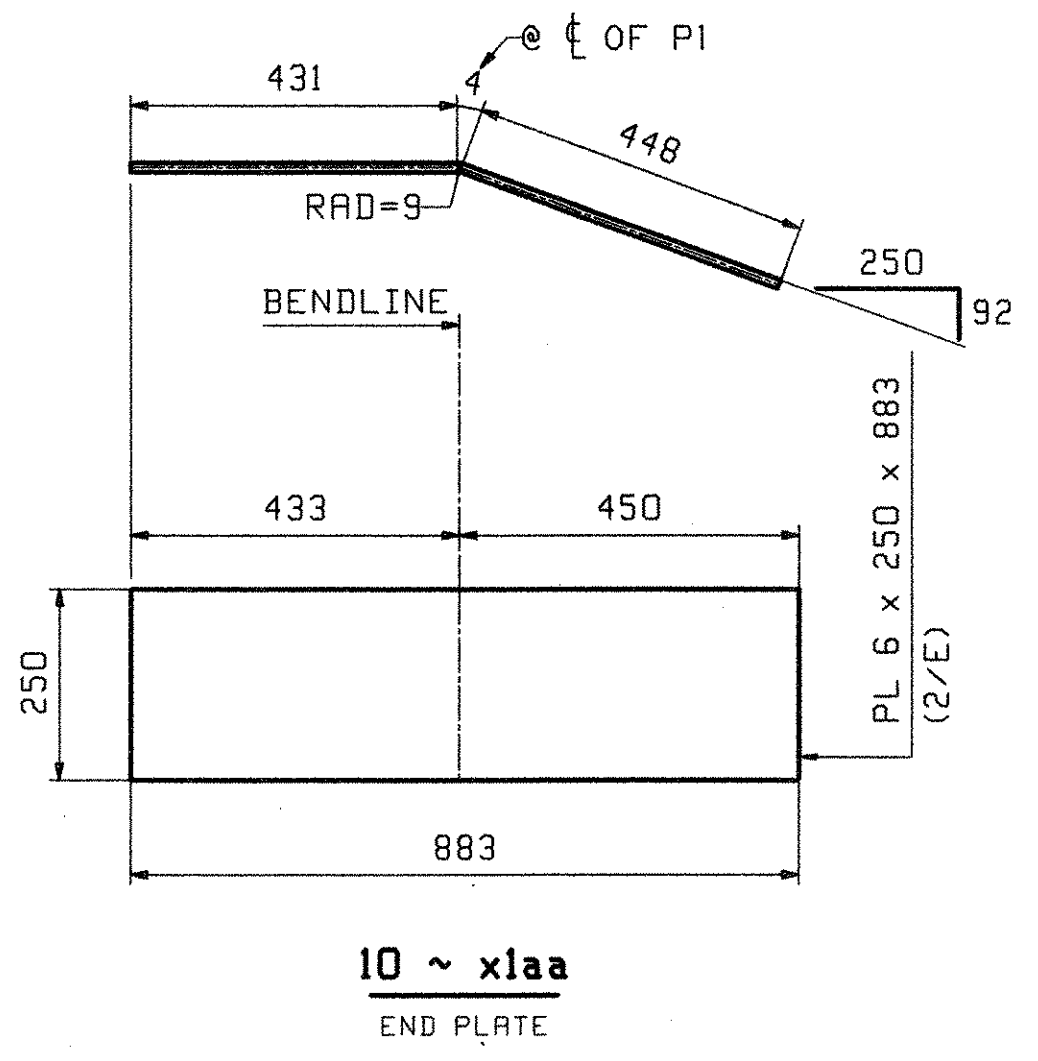


| MARK "A" | QTY | (A) | |
|----------|-----|-----|---------------|
| xlb | 20 | 150 | LOW END |
| xlc | 2 | 158 | DROPS 6 & 9 |
| xld | 2 | 165 | DROPS 13 & 16 |
| xlf | 2 | 178 | DROPS 26 & 30 |
| xlg | 2 | 185 | DROPS 33 & 36 |
| xlk | 2 | 199 | DROPS 47 & 50 |
| xlm | 2 | 205 | DROPS 53 & 57 |
| xln | 2 | 219 | DROPS 67 & 71 |
| xlp | 2 | 226 | DROPS 74 & 77 |
| xlt | 2 | 240 | DROPS 88 & 91 |
| xlv | 2 | 246 | DROPS 94 & 98 |



NOTES:
 ALL MATERIAL SHALL BE M270M-345W.
 ALL BOLT HOLES SHALL BE $\frac{15}{16}$ " ϕ FOR $\frac{7}{8}$ " ϕ HSB.
 FOR GENERAL NOTES SEE DRAWING GNI.

| | | | | | | | | | | |
|------------------|--------|--|--|--|--|--|--|--|--|--|
| OUT FOR APPROVAL | 3-1-06 | | | | | | | | | |
| OUT FOR APPROVAL | | | | | | | | | | |
| ISSUED TO SHOP | | | | | | | | | | |
| FIELD & OFFICE | | | | | | | | | | |

| REV. | REMARKS | DATE | DWN | CHK | APP | Q.A. | NO. | DIA. | LGT | TYPE | WASHER |
|------|---------|------|-----|-----|-----|------|-----|------|-----|------|--------|
| | | | | | | | | | | | |

MATERIAL: M270M-345W
 ELECTRODES:
 HOLES: $\frac{15}{16}$ " ϕ
 SHOP BOLTS: NONE
 SURFACE PREP. & PAINT: SEE DRAWING GNI

| | | | | | |
|--------------|---|----------------------|-------------------|--------------------|---------------|
| DESCRIPTION: | GIRDER STANDARDS | DRAWN BY: | JTB | DATE: | 02/16 |
| JOB: | VT 114 OVER THE EAST BRANCH OF THE PASSUMPSIC RIVER | CHKD BY: | PCP | DATE: | 03/02 |
| | BRIDGE NO. 8 | APPROV BY: | | | |
| | LYNDON, VT. COUNTY OF CALEDONIA | SUPERVISOR: | W. J. GATTI | | |
| PROJ NO. | BRS 0269 (8)S | Q.A. | | | |
| CUSTOMER: | WINTERSET, INC. | JOB NO. | 293 | DRG. NO. | X1 |
| | | PHONE (207) 282-7360 | SACO, MAINE 04072 | FAX (207) 282-1179 | REV. Δ |

RECEIVED
 OK'D BY: *CWC* OK'D BY: *JMP*
 MAR 13 2006
 RESUBMIT APPROVED
 BY: *CWC* DATE: *4-11-06*