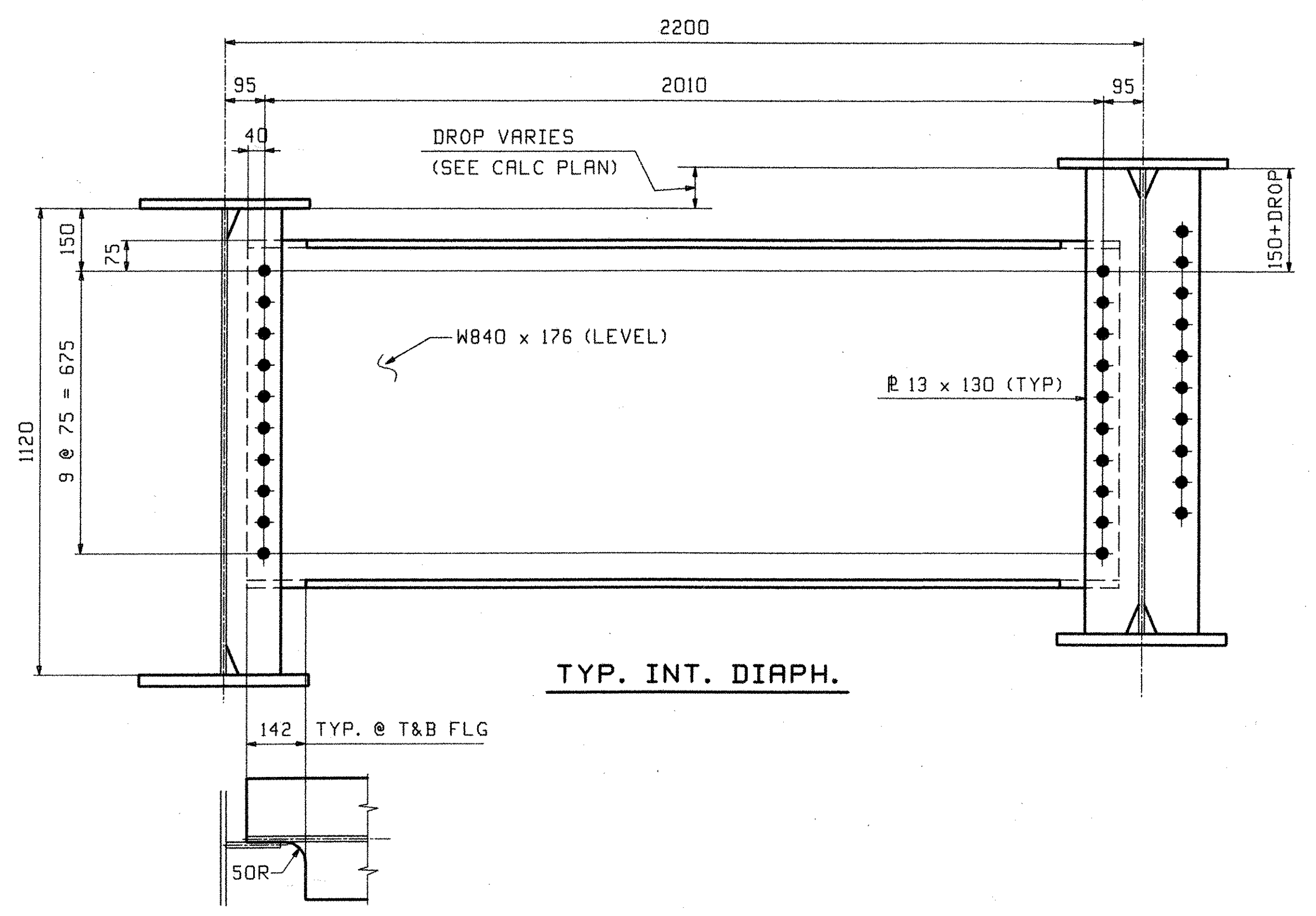


Line	LEN A	GRADE	
		Abut 1	Abut 2
1	28 192	-.0089	-.0171
2	28 189	-.0050	-.0131
3	28 189	-.0010	-.0092
4	28 187	.0030	-.0052
5	28 187	.0069	-.0012

- NOTES
1. LONGITUDINAL DIMENSIONS ARE SLOPING ALONG BOTT OF WEB WITH CORRECTIONS MADE FOR VERTICAL CURVE, GRADE & DL CAMBER (UN).
 2. TRANSVERSE DIMENSIONS ARE IN A HORIZ. PLANE (UN).
 3. DROP ARROW POINTS TOWARDS LOW END OF MEMBER.
 4. ENDS OF GIRDERS AND BRG. STIFF'S ARE VERTICAL AFTER DL ROTATION.
 5. CF STIFF, INT STIFF & FIELD SPLICES ARE NORMAL TO GRADE.
 6. BOTT PT NUMBERS = TOP PT NUMBERS + 100.
 7. DIAPH DROPS ARE CALCULATED IN THEIR FINAL POSITION.
 8. DIAPH CONNECTIONS MAY BE COMBINED FOR DROPS WITHIN A RANGE OF ± 3 mm.

CALCULATION PLAN

**** NOTE ****
THE PURPOSE OF THIS DRAWING IS TO COORDINATE GEOMETRIC CONTROL INFORMATION. THIS DWG IS SUBMITTED FOR INFORMATION ONLY AND IS NOT INTENDED FOR SHOP FABRICATION.



OUT FOR APPROVAL	3-7-06										
OUT FOR APPROVAL											
ISSUED TO SHOP											
FIELD & OFFICE											
REV.	REMARKS	DATE	DWN	CHK	APP	Q.A.	NO.	DIA.	LGT	TYPE	WASHER
MATERIAL:	M270M-345W	ELECTRODES:					Holes:				SHOP BOLTS:
							15 16(24 mm)Ø (UN)				NONE
SURFACE PREP. & PAINT:											
DESCRIPTION:	CALCULATION PLAN					DRAWN BY	DATE				
JOB:	VT 114 OVER THE EAST BRANCH OF THE PASSUMPSIC RIVER					WL	01/31				
	BRIDGE NO. 8					CHKD BY					
	LYNDON, VT. COUNTY OF CALEDONIA					DO	02/06				
						APPROV BY					
						SUPERVISOR	W. J. GATTI				
PROJ NO.	BRS 0269 (8)S					Q.A.					
CUSTOMER:	WINTERSET, INC.										
CASCO BAY STEEL STRUCTURES, INC.						JOB NO.	293	DRG. NO.	WS1		
75 SPRING HILL ROAD						SACO, MAINE 04072					
PHONE (207) 282-7360						FAX. (207) 282-1179					

RECEIVED
CK'D BY: [Signature] OK'D BY: CWC
MAR 13 2006
RESUBMIT APPROVED: [Signature] AS NOTED
BY: CWC DATE: 4-11-06