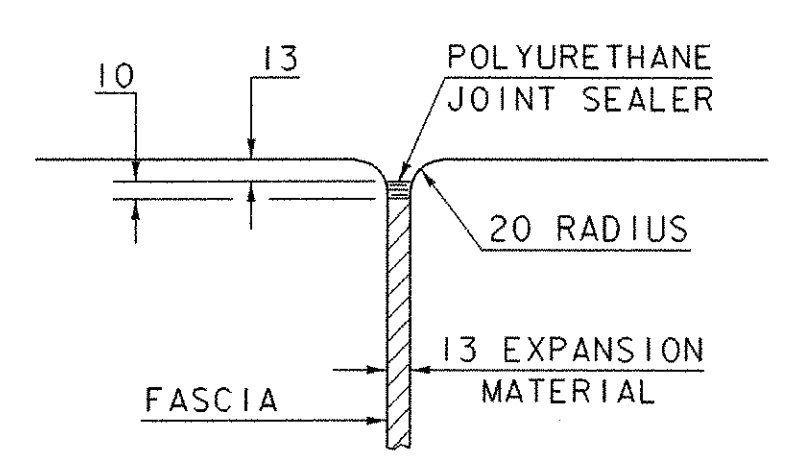
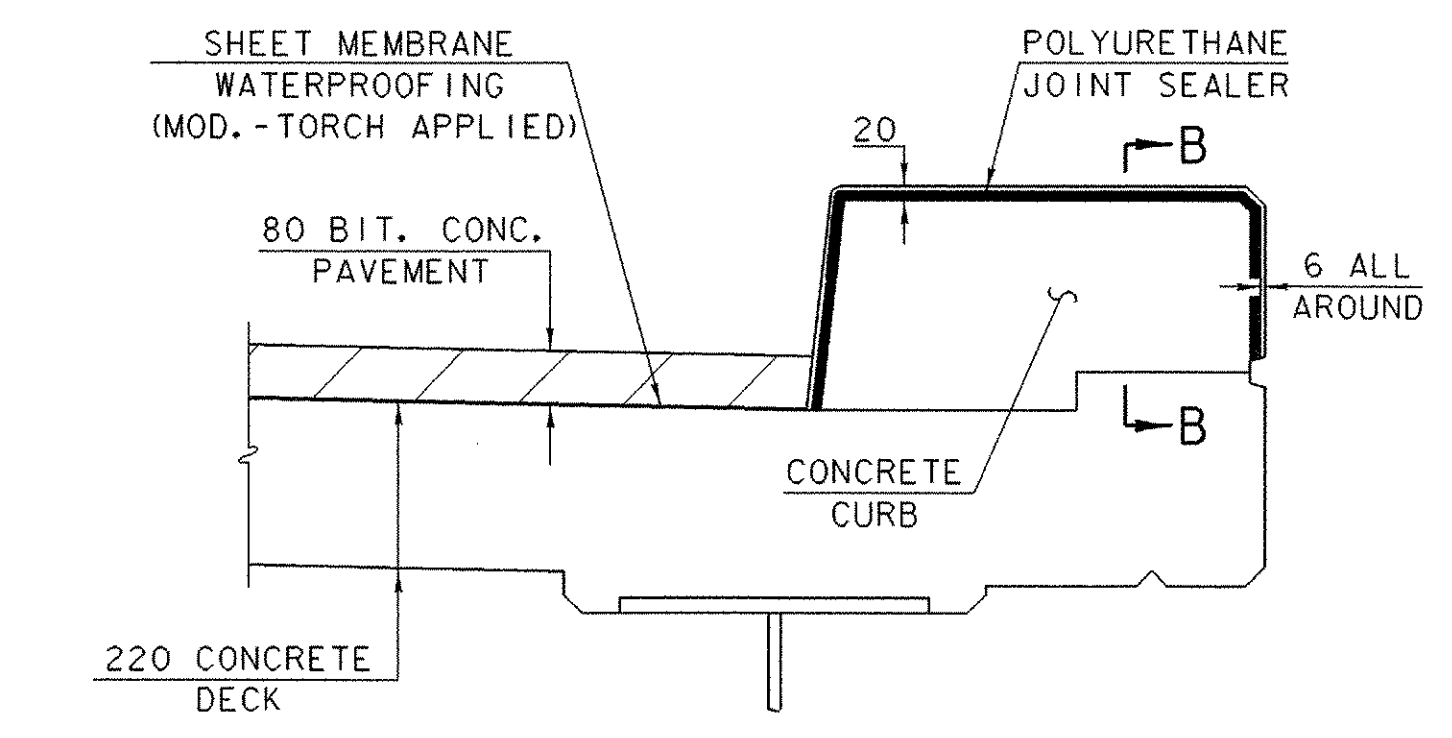


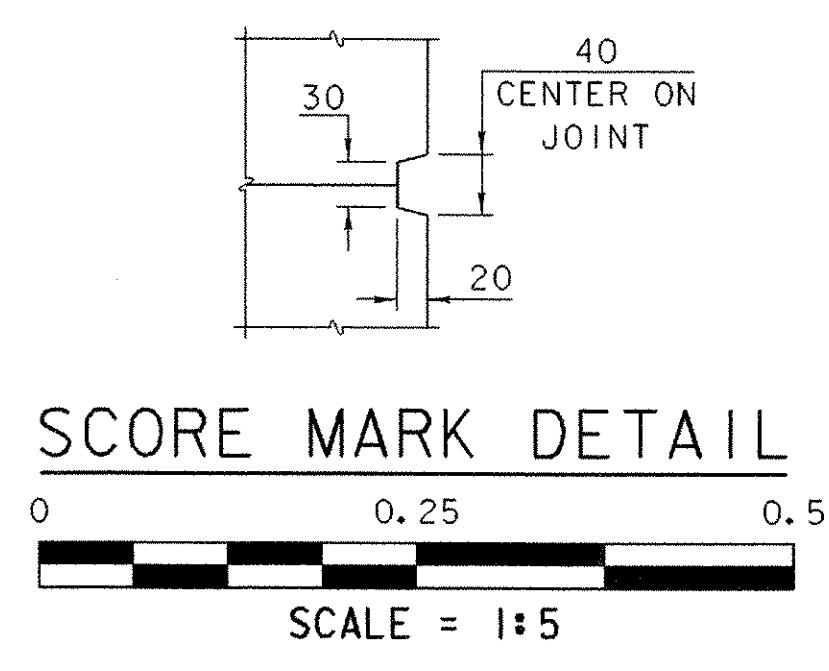
BRIDGE CURB AND RAIL DETAIL
SCALE = 1:10



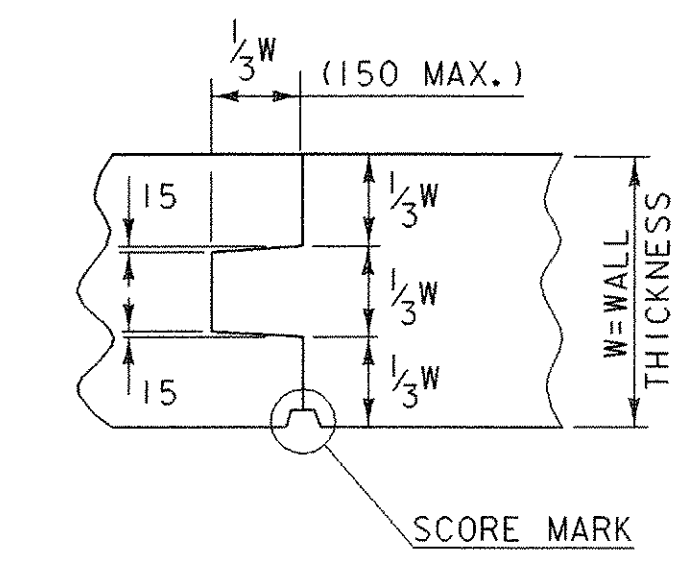
JOINT BETWEEN FASCIA AND WINGWALL
NOT TO SCALE



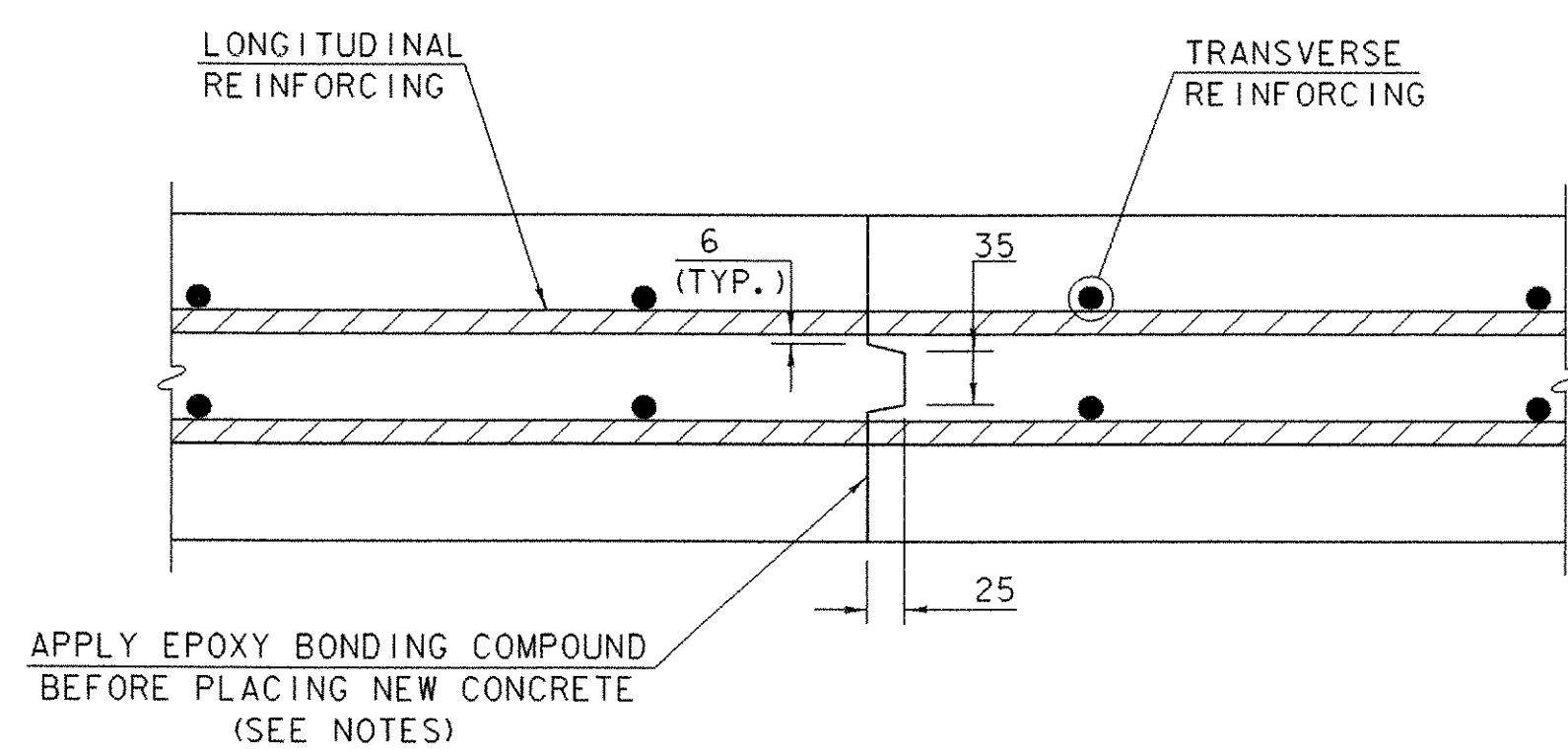
TYPICAL SECTION THROUGH CONCRETE CURB CONSTRUCTION JOINT
NOT TO SCALE



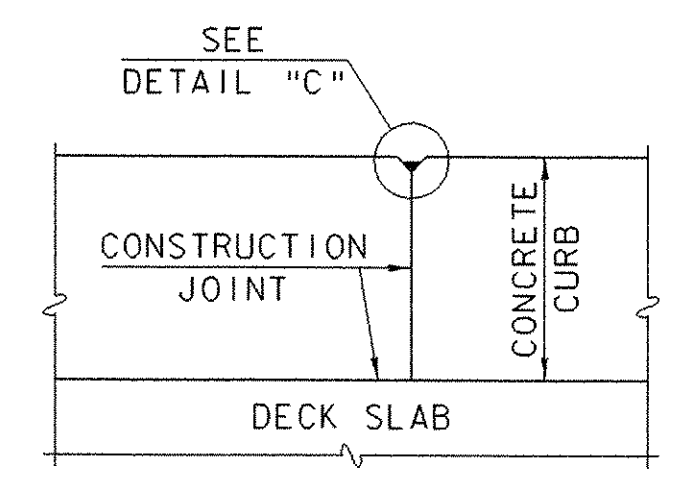
SCORE MARK DETAIL
SCALE = 1:5



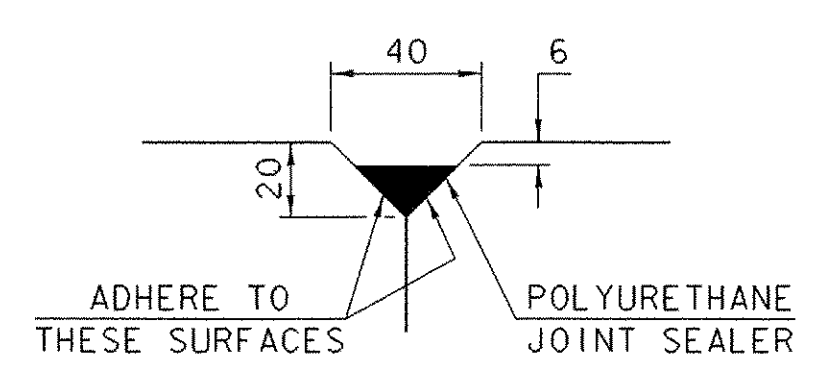
TYPICAL CONCRETE CONSTRUCTION JOINT
NOT TO SCALE



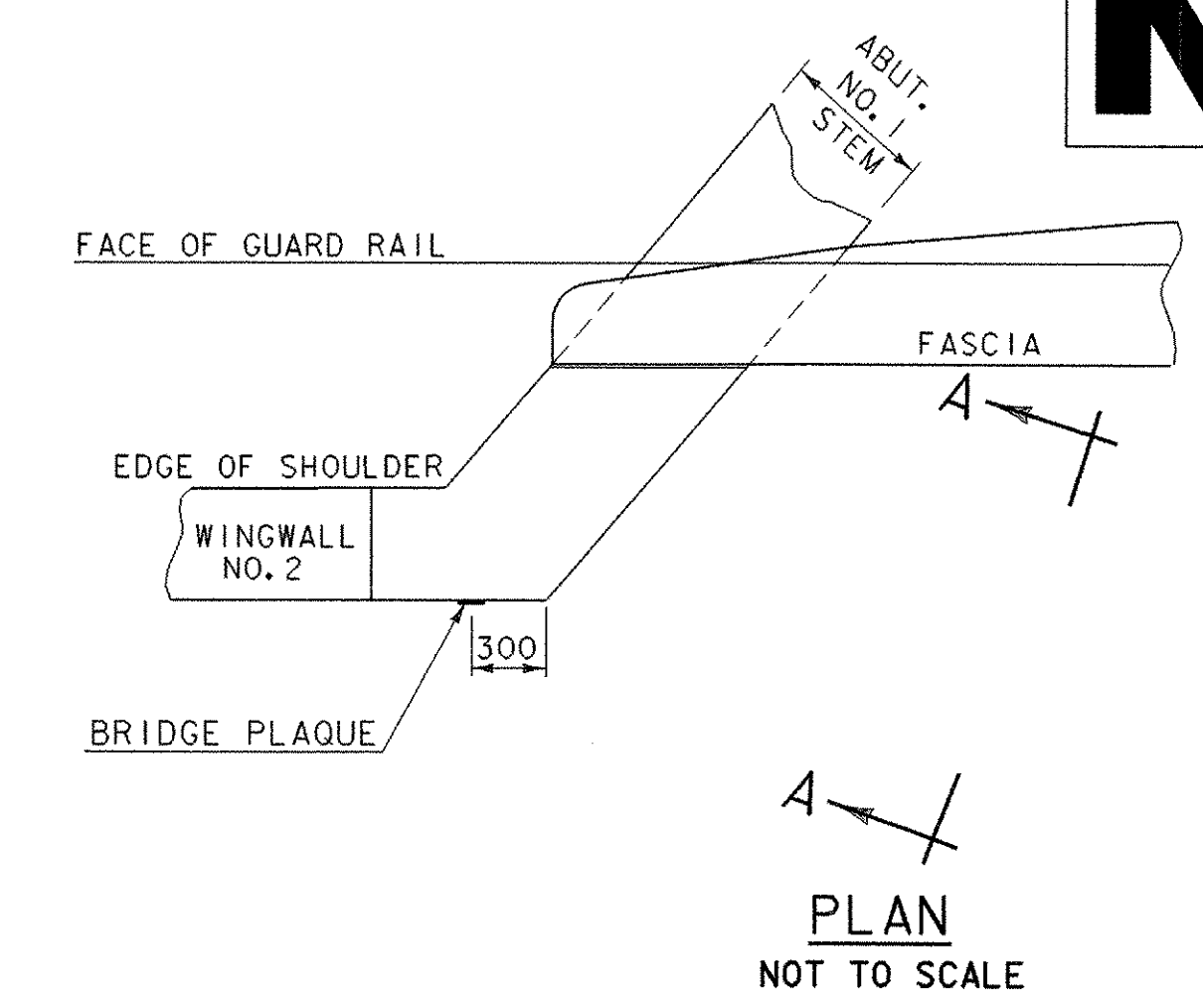
TRANSVERSE BRIDGE DECK CONSTRUCTION JOINT DETAILS
SCALE = 1:5



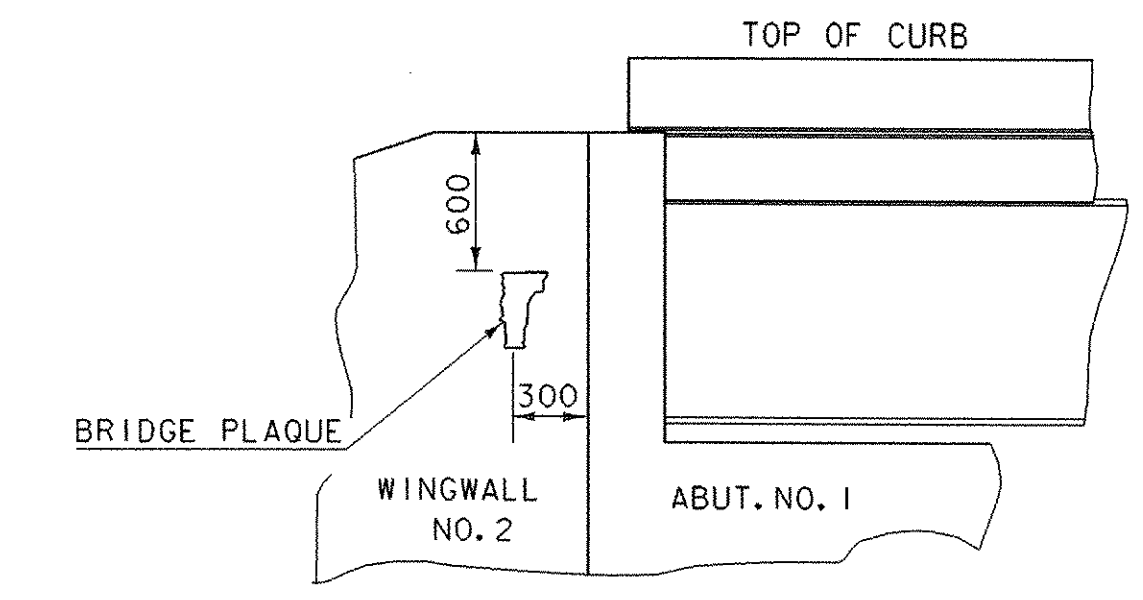
SECTION B-B
NOT TO SCALE



DETAIL "C"
NOT TO SCALE



PLAN
NOT TO SCALE



VIEW "A-A"
NOT TO SCALE
LOCATE BRIDGE PLAQUE
THE BRIDGE PLAQUE WILL BE SUPPLIED BY THE AGENCY OF TRANSPORTATION AND SHALL BE INSTALLED BY THE CONTRACTOR AS SHOWN OR AS DIRECTED BY THE ENGINEER.

NOTES

1. SHEET MEMBRANE WATERPROOFING (MOD.-TORCH APPLIED) SHALL EXTEND TO FACE OF CURB.
2. CONSTRUCTION JOINTS THROUGH CONCRETE CURBS SHALL BE SPACED A MAXIMUM OF 4500 CENTER TO CENTER AND SHALL BE 550 MINIMUM FROM THE CENTER OF THE NEAREST BRIDGE RAIL POST. CONCRETE SHALL BE PLACED IN ALTERNATE SECTIONS WITH A MINIMUM OF 48 HOURS DELAY BETWEEN ADJACENT POURS.
3. LONGITUDINAL REINFORCING SHALL PASS THROUGH CONCRETE CONSTRUCTION JOINTS. CURB REINFORCING STIRRUP BARS SHALL BE TURNED AS REQUIRED TO FIT FLARED ENDS.
4. MATERIAL AND APPLICATION FOR POLYURETHANE JOINT SEALER SHALL MEET THE REQUIREMENTS OF SUBSECTIONS 707.05 AND 524.06 (d) OF THE STANDARD SPECIFICATIONS. PAYMENT SHALL BE MADE INCIDENTAL TO ITEM 501.33, "CONCRETE, HIGH PERFORMANCE CLASS A".
5. EPOXY BONDING COMPOUND SHALL BE PAID INCIDENTAL TO ITEM 501.33, "CONCRETE, HIGH PERFORMANCE CLASS A".

MISCELLANEOUS PROJECT DETAILS

PROJECT NAME:	LYNDON
PROJECT NUMBER:	BRS 0269 (8)S
FILE NAME:	85e04\Structures\se04impd.i
PROJECT MANAGER:	R. R. WHITCOMB
DESIGNED BY:	S. SCRIBNER
PLOT DATE:	29-NOV-2005
DRAWN BY:	L. BULLOCK
CHECKED BY:	S. SCRIBNER
SHEET 37 OF 68	