

CAST IRON GRATE W/ FRAME, TYPE A-D
3+530.0 LT.

150mm UNDERDRAIN
3+460.0 LT. - 3+529.7 LT.
~~3+460.0 RT. - 3+529.2 RT.~~
3+502.0 RT.

150mm UNDERDRAIN CARRIER PIPE
3+460.0 LT.

UNDERDRAIN FLUSHING BASIN (FB)
3+460.0 LT.

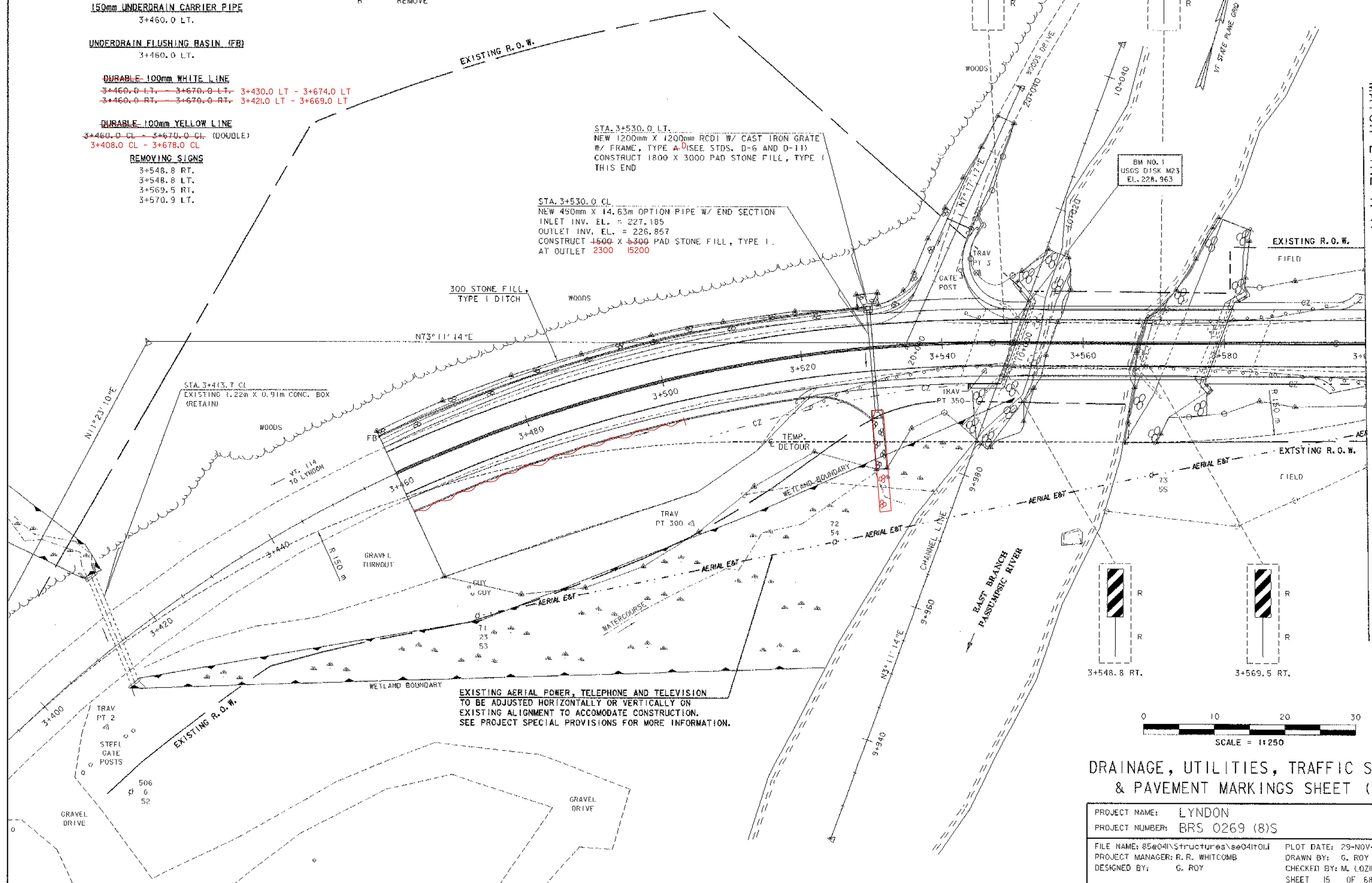
DURABLE 100mm WHITE LINE
~~3+460.0 LT. - 3+670.0 LT. - 3+430.0 LT - 3+674.0 LT~~
~~3+460.0 RT. - 3+670.0 RT. - 3+421.0 LT - 3+669.0 LT~~

DURABLE 100mm YELLOW LINE
~~3+460.0 CL - 3+670.0 CL (DOUBLE)~~
3+408.0 CL - 3+678.0 CL

REMOVING SIGNS
3+548.8 RT.
3+548.8 LT.
3+569.5 RT.
3+570.9 LT.

LEGEND

- EXISTING SIGN
- REMOVE



STA. 3+530.0 LT.
NEW 1200mm X 1200mm RCDI W/ CAST IRON GRATE W/ FRAME, TYPE A-D (SEE STDS. D-6 AND D-11)
CONSTRUCT 1800 X 3000 PAD STONE FILL, TYPE I THIS END

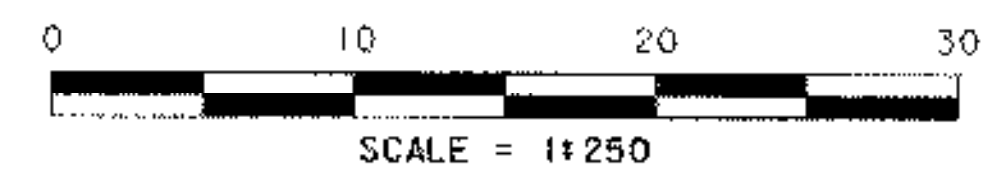
STA. 3+530.0 CL
NEW 450mm X 14.63m OPTION PIPE W/ END SECTION
INLET INV. EL. = 227.185
OUTLET INV. EL. = 226.857
CONSTRUCT 1500 X 6300 PAD STONE FILL, TYPE I.
AT OUTLET 2300 15200

STA. 3+413.7 CL
EXISTING 1.22m X 0.91m CONC. BOX (RETAIN)

300 STONE FILL TYPE I DITCH

EXISTING AERIAL POWER, TELEPHONE AND TELEVISION TO BE ADJUSTED HORIZONTALLY OR VERTICALLY ON EXISTING ALIGNMENT TO ACCOMMODATE CONSTRUCTION. SEE PROJECT SPECIAL PROVISIONS FOR MORE INFORMATION.

BM NO. 3
USGS DISK M23
EL. 228.963



DRAINAGE, UTILITIES, TRAFFIC SIGNS & PAVEMENT MARKINGS SHEET (I)

PROJECT NAME:	LYNDON	FILE NAME:	85e04\InStructurea\8e04101I	PLOT DATE:	29-NOV-2005
PROJECT NUMBER:	BRS 0269 (8)S	PROJECT MANAGER:	R. R. WHITCOMB	DRAWN BY:	G. ROY
		DESIGNED BY:	G. ROY	CHECKED BY:	M. LOZIER
				SHEET	15 OF 68

MATCH LINE A-A

STA. 3+600