

ARDRAIL APPROACH SECTION
 3+571 RT ~ 3+580.5 RT
 3+574 LT ~ 3+584.2 LT

STEEL BEAM GUARDRAIL
 3+600.0 RT ~ 3+611.0 RT
 3+600.0 LT ~ 3+615.0 LT

MODIFIED ECCENTRIC LOADER TERMINAL (MELT)
 3+611.0 RT ~ 3+622.4 RT
 3+615.0 LT ~ 3+626.3 LT

REMOVAL AND DISPOSAL OF GUARDRAIL
 3+600 RT ~ 3+607 RT

CONSTRUCT DRIVE
 3+642.5 RT. (12 m PAVED)

COLD PLANING-BIT. PAVEMENT
 3+650 ~ 3+670

DURABLE 100 mm WHITE LINE
 3+600 ~ 3+670 LT
 3+600 ~ 3+670 RT

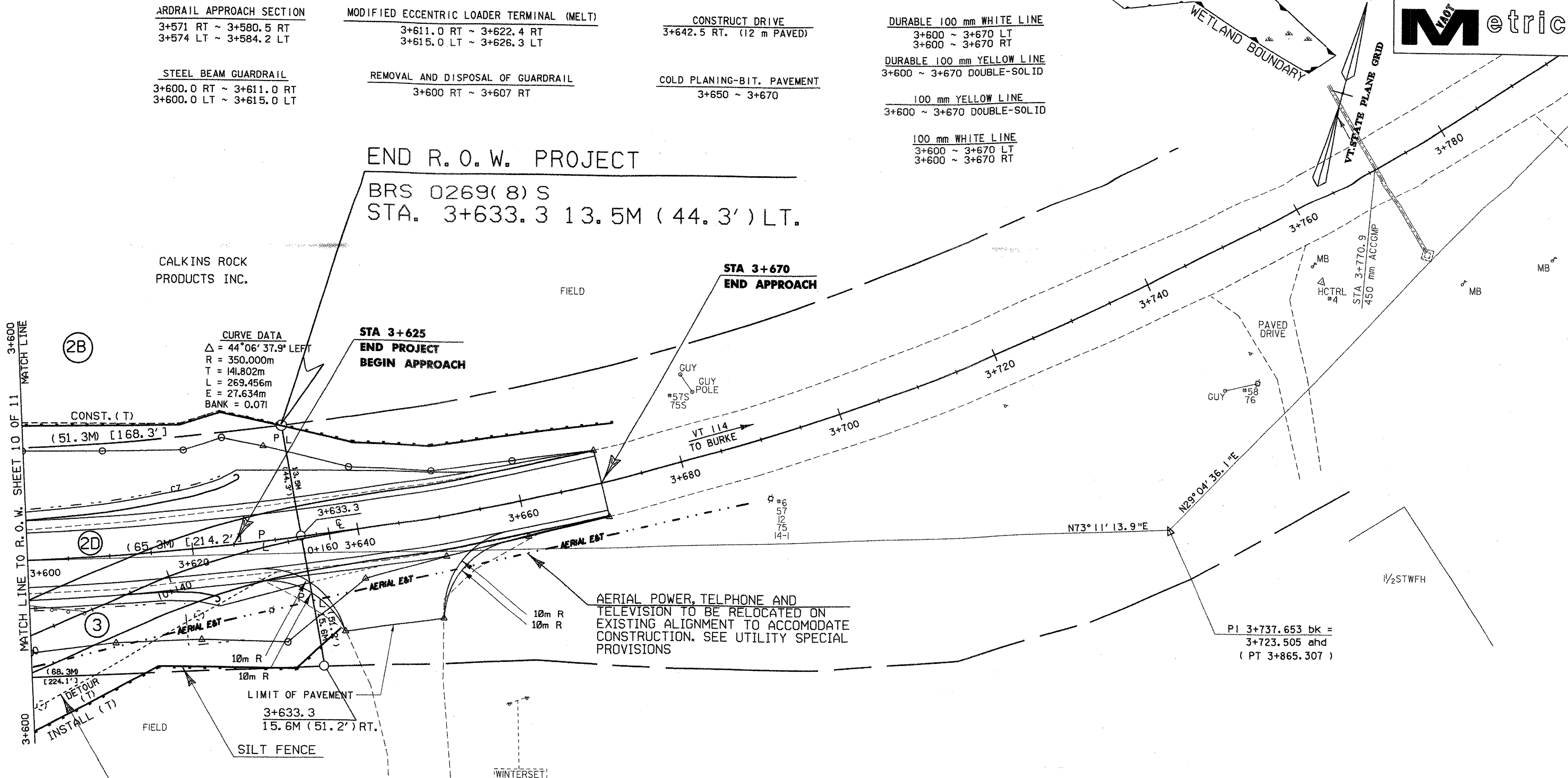
DURABLE 100 mm YELLOW LINE
 3+600 ~ 3+670 DOUBLE-SOLID

100 mm YELLOW LINE
 3+600 ~ 3+670 DOUBLE-SOLID

100 mm WHITE LINE
 3+600 ~ 3+670 LT
 3+600 ~ 3+670 RT

END R.O.W. PROJECT

BRS 0269(8) S
 STA. 3+633.3 13.5M (44.3') LT.



CURVE DATA
 $\Delta = 44^{\circ}06'37.9"$ LEFT
 R = 350.000m
 T = 141.802m
 L = 269.456m
 E = 27.634m
 BANK = 0.071

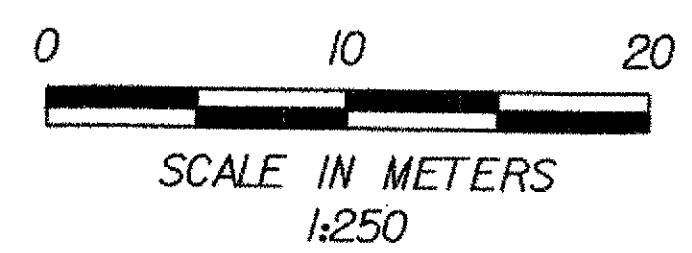
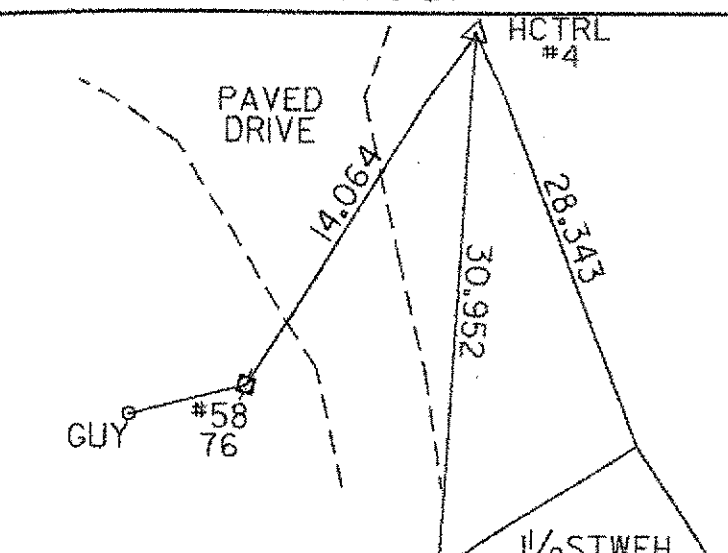
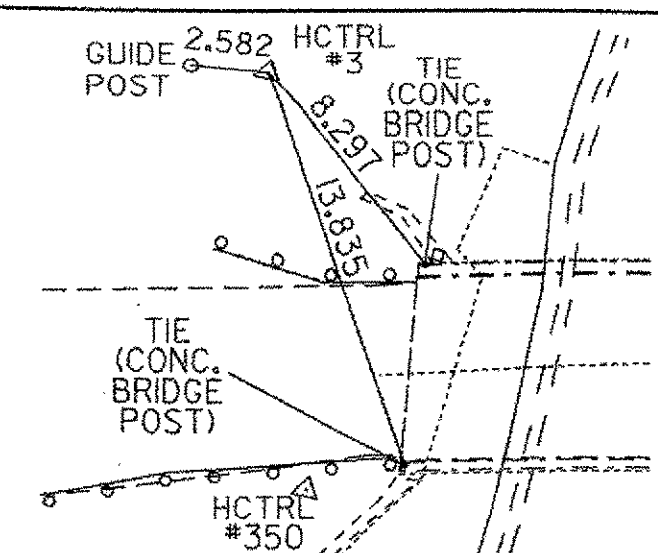
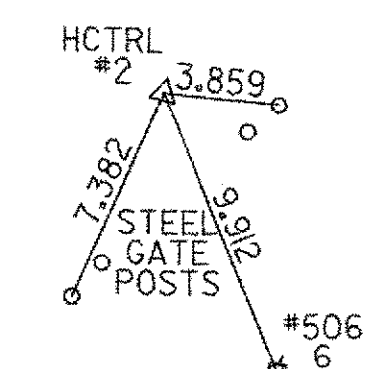
AERIAL POWER, TELEPHONE AND TELEVISION TO BE RELOCATED ON EXISTING ALIGNMENT TO ACCOMMODATE CONSTRUCTION. SEE UTILITY SPECIAL PROVISIONS

THIS SHEET IS FOR R.O.W PURPOSES ONLY

LINES SHOWN ON THIS PLAN AS EXISTING PROPERTY LINES P/L ARE BELIEVED TO BE ACCURATE BUT SHOULD NOT BE RELIED UPON FOR PURPOSES UNRELATED TO THE STATE OF VERMONT ACQUISITION OF LAND AND RIGHTS FOR THIS PROJECT.

HORIZONTAL CONTROL TIES (ALL DISTANCES IN METERS) N.T.S.

HCTRL #2	HCTRL #3	HCTRL #4
N = 228839.956	N = 228937.471	N = 229017.084
E = 542476.476	E = 542575.973	E = 542773.012
Z = 230.031	Z = 229.223	Z = 229.051



LAYOUT SHEET 2

DATUM
 VERTICAL NAVD88
 HORIZONTAL NAD83 (92)

PROJECT: LYNDON PROJECT NO.: BRS 0269(8)S
 DESIGN FILE NAME: /str5/85e04i/de04lbr.dgn PLOT DATE: 26-JUL-2002
 IPARM FILE NAME: de04i02.i SURVEYED BY: Moreau SURVEY DATE: Sept. 93
 SQUAD LEADER: C. Keller DRAWN BY: M. Fowler