

GUARDRAIL APPROACH SECTION, NETC 2 RAIL
 3+537.7 RT ~ 3+545.5 RT
 SL 1 20+011.8 RT ~ 3+549.4 LT
 3+573.2 RT ~ 3+580.8 RT
 3+577.0 LT ~ 3+584.6 LT

STEEL BEAM GUARDRAIL
 3+503.5 RT ~ 3+537.7 RT
 SL 1 20+011.8 RT ~ SL 1 20+019.1 RT
 3+580.8 RT ~ 3+611.0 RT
 3+584.6 LT ~ 3+615.0 LT

MODIFIED ECCENTRIC LOADER TERMINAL (MELT)
 3+492.2 RT ~ 3+503.5 RT

BRIDGE RAILING - NETC 2 RAIL
 3+545.5 RT ~ 3+573.2 RT
 3+549.4 LT ~ 3+577.0 LT

BIT. CONC. GUTTER
 3+465.0 RT ~ 3+534.4 LT

REMOVAL AND DISPOSAL OF GUARDRAIL
 3+519 RT ~ 3+549 RT
 3+543 LT ~ 3+550 LT
 3+568 RT ~ 3+600 RT
 3+570 LT ~ 3+596 LT

REMOVAL & DISPOSAL OF GUIDE POSTS
 1 EA @ 3+542.6 LT.

DRIVE GATE FOR CHAIN-LINK FENCE, TYPE 11
 SL 1 20+018.8 (3.8m WIDE)
 (2 - 1.9m GATES WITH OPENING IN THE MIDDLE)

100 mm YELLOW LINE
 3+460 ~ 3+600 DOUBLE-SOLID

100 mm WHITE LINE
 3+460 ~ 3+600
 3+470 ~ 3+600

REMOVING SIGNS
 4 EACH

DURABLE 100 mm WHITE LINE
 3+460 ~ 3+600 LT
 3+460 ~ 3+600 RT

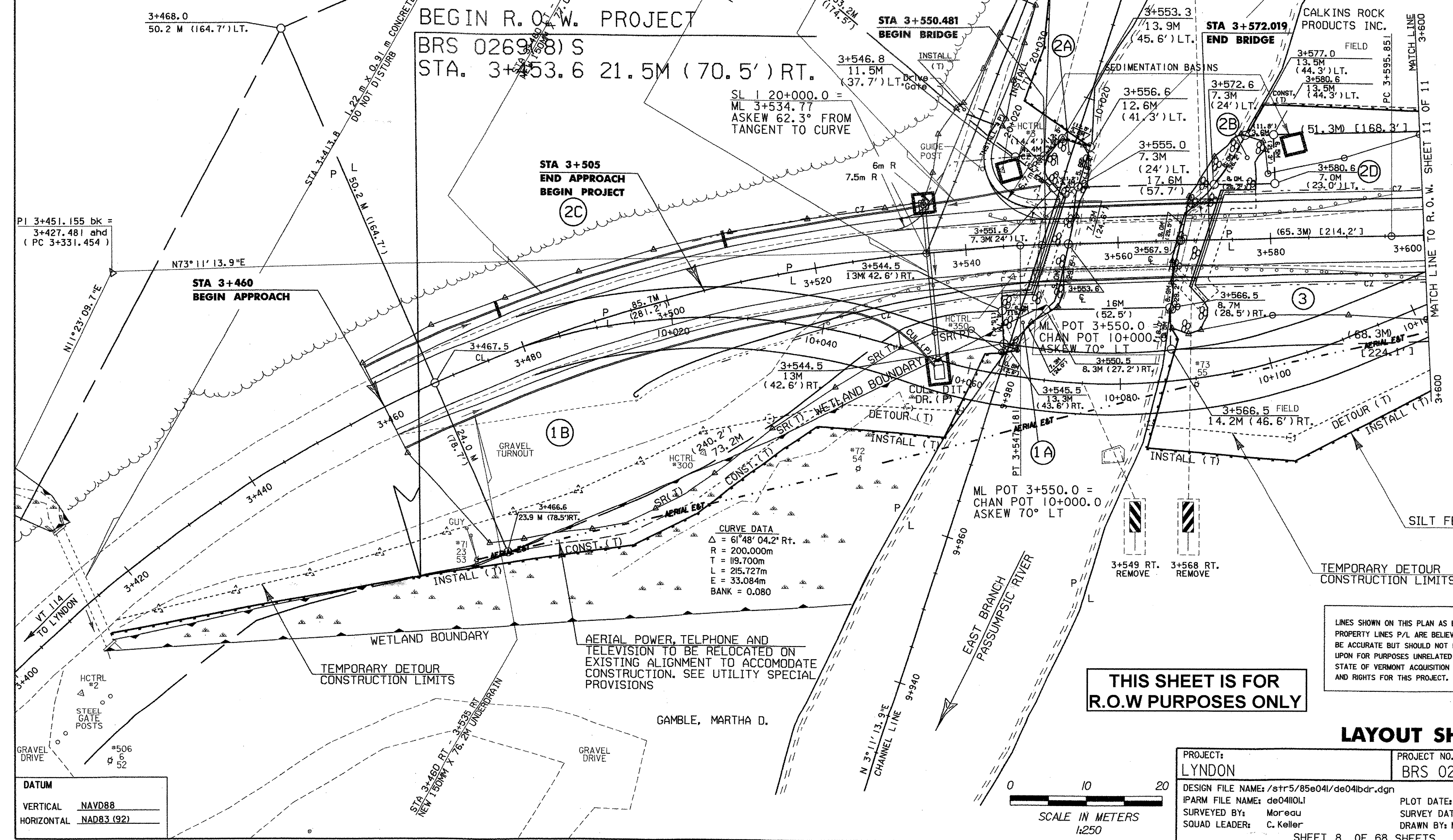
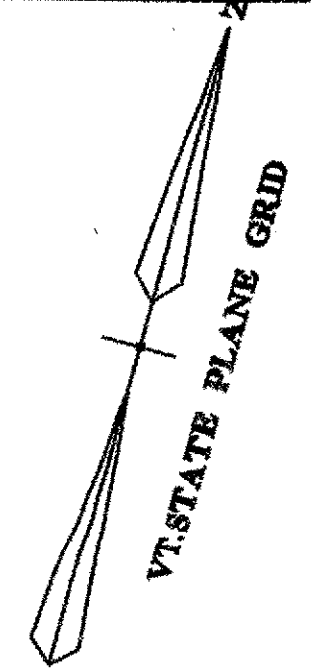
DURABLE 100 mm YELLOW LINE
 3+460 ~ 3+600 DOUBLE-SOLID

CONSTRUCT DRIVE
 3+538 LT. (2.5 m GRAVEL)

COLD PLANING-BIT. PAVEMENT
 3+460 ~ 3+480

REMOVE
 3+550.5 LT.
 3+570 LT.

BENCHMARK #1
 ELEV.=228.963

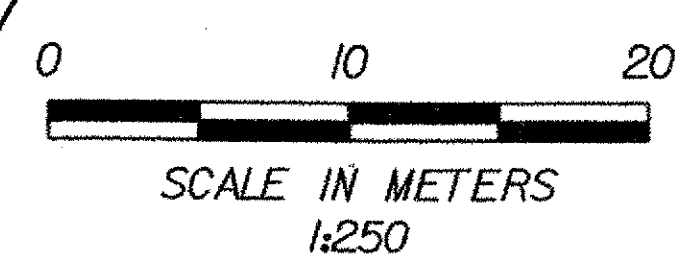


PI 3+451.155 bk =
 3+427.481 and
 (PC 3+331.454)

DATUM
 VERTICAL NAVD88
 HORIZONTAL NAD83 (92)

THIS SHEET IS FOR R.O.W PURPOSES ONLY

LINES SHOWN ON THIS PLAN AS EXISTING PROPERTY LINES P/L ARE BELIEVED TO BE ACCURATE BUT SHOULD NOT BE RELIED UPON FOR PURPOSES UNRELATED TO THE STATE OF VERMONT ACQUISITION OF LAND AND RIGHTS FOR THIS PROJECT.



PROJECT: LYNDON		PROJECT NO.: BRS 0269(8)S	
DESIGN FILE NAME: /str5/85e041/de041bdr.dgn		PLOT DATE: 19-MAY-2003	
IPARM FILE NAME: de041011		SURVEY DATE: Sept. 93	
SURVEYED BY: Moreau		DRAWN BY: M. Fowler	
SQUAD LEADER: C. Keller		SHEET 8 OF 68 SHEETS	