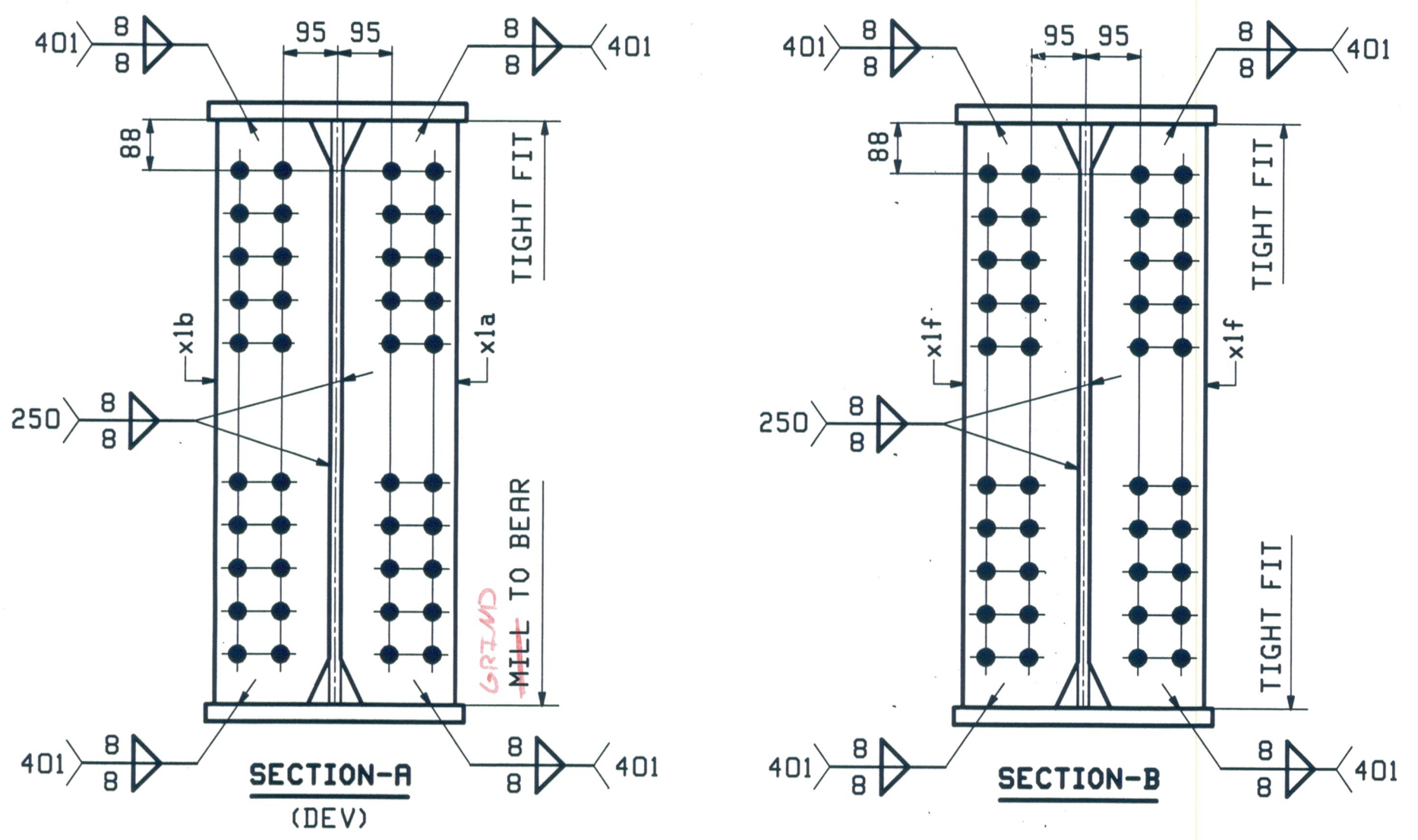
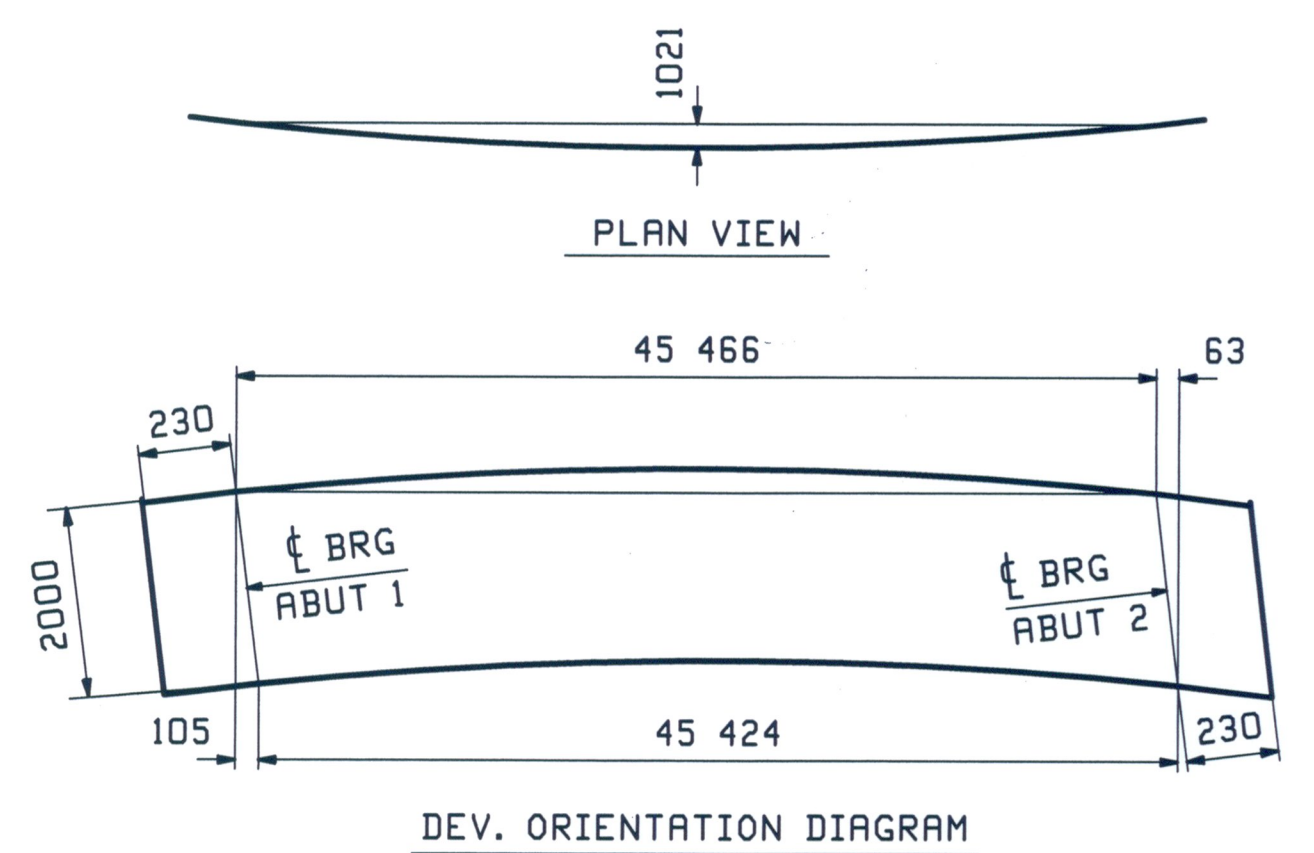


ABM INFO		SHIP	BILL OF MATERIAL			JOB NO.	DRAWING NO.	REV.	
						461	4		
PRGE	LINE	MARK	QTY	MARK	MATERIAL	LENGTH	REMARKS	WT	PROCUREMENT NOTES
		4G4	1		GIRDER				29544 lb 58133 lb
2	A		1	wa	PL 20x2000	25 710	M270M-345HT2		
2	G		1	wb	PL 20x2000	20 299	M270M-345HT2		
1	W		1	ta	PL 30x450	11 243	M270M-345HT2		
1	C		1	tb	PL 40x450	23 500	M270M-345HT2		
1	Y		1	tc	PL 30x450	11 183	M270M-345HT2		
1	G		1	ba	PL 40x450	11 203	M270M-345HT2		
1	A		1	bb	PL 60x450	23 500	M270M-345HT2		
1	G		1	bc	PL 40x450	11 181	M270M-345HT2		
4	B		2	x1a	PL 30x200	2 003	M270M-345HT2		
4	B		2	x1b	PL 30x200	2 003	M270M-345HT2		
4	C		14	x1f	PL 20x200	2 000	M270M-345HT2		

ONE - GIRDER - 4G4 (DEV)

SEE DRAWING GN1 FOR GENERAL NOTES
SEE DRAWING F2 FOR FLANGE DIAGRAM
SEE DRAWING C1 FOR CAMBER DIAGRAM
SEE X1 DRAWING FOR GIRDER STANDARDS



RECEIVED
SEP 2 2010
APPROVED
DATE 9/29/10

REV.	DATE	REMARKS	DWN	CHK	APVL	SHOP
0						11/30/2010
MATERIAL:		SURFACE PREP. & PAINT:		HOLES:		SHOP BOLTS:
M270M-345HT2		SEE SHT GN1		24mm		
DESCRIPTION: GIRDER 4G4						
CASCO BAY STEEL STRUCTURES, INC. 75 SPRING HILL ROAD PHONE (207) 282-7360						SACO, MAINE 04072 FAX. (207) 282-1179
STRUCTURE: VT RTE 107 over STONEY BROOK BRIDGE 9 STOCKBRIDGE, VT COUNTY of WINDSOR				DRAWN: TG	DATE: 08/10	
				CHKD: SF	DATE: 08/23/10	
LOCATION: STOCKBRIDGE, VT				JOB NO. 461	DWG NO. 4	
PROJ NO. BRF 022-1(20)						
CUSTOMER: AUSTIN CONSTRUCTION						REV. Δ