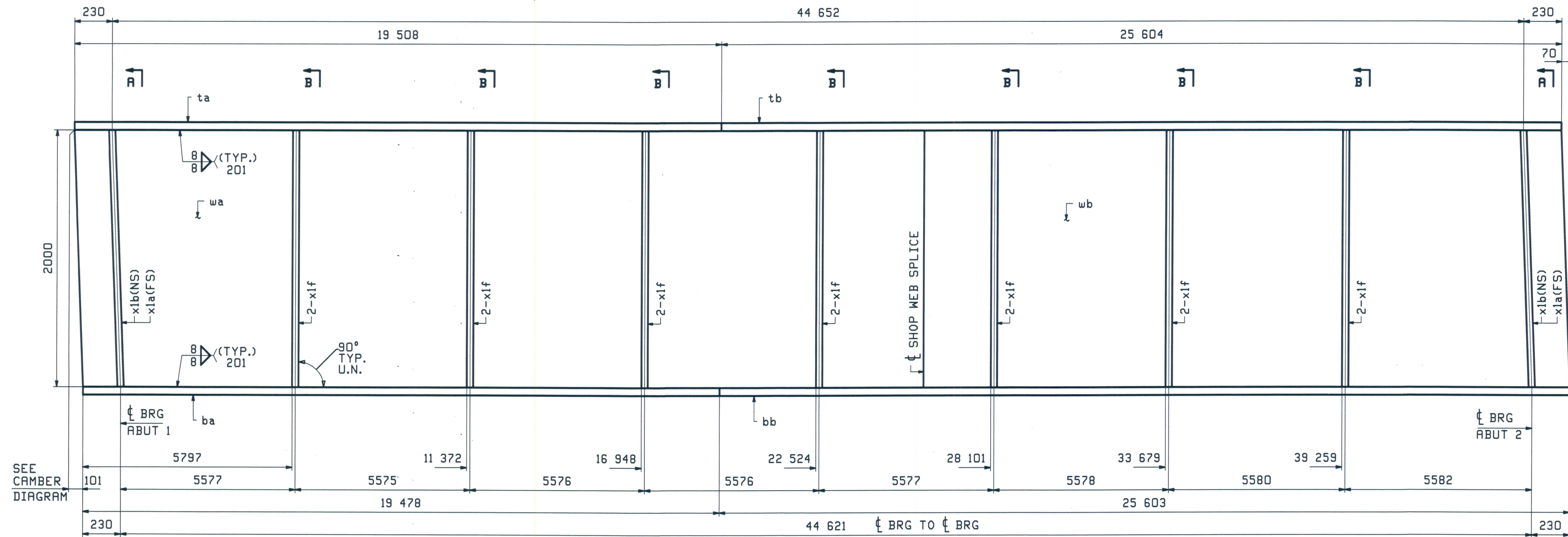


ABM INFO		SHIP	BILL OF MATERIAL				JOB NO.	DRAWING NO.	REV.
PAGE	LINE	MARK	QTY	MARK	MATERIAL	LENGTH	REMARKS	MT	PROCUREMENT NOTES
		2G2	1		GIRDER				25007 lbs 53130 lbs
2	A		1	wa	PL 20x2000	25 705	M270M-345WT2		
2	L		1	wb	PL 20x2000	19 494	M270M-345WT2		
1	N		1	ta	PL 30x450	19 508	M270M-345WT2		
1	J		1	tb	PL 30x450	25 604	M270M-345WT2		
1	N		1	ba	PL 30x450	19 478	M270M-345WT2		
1	J		1	bb	PL 30x450	25 603	M270M-345WT2		
4	B		2	x1a	PL 30x200	2 003	M270M-345WT2		
4	B		2	x1b	PL 30x200	2 003	M270M-345WT2		
4	C		14	x1f	PL 20x200	2 000	M270M-345WT2		

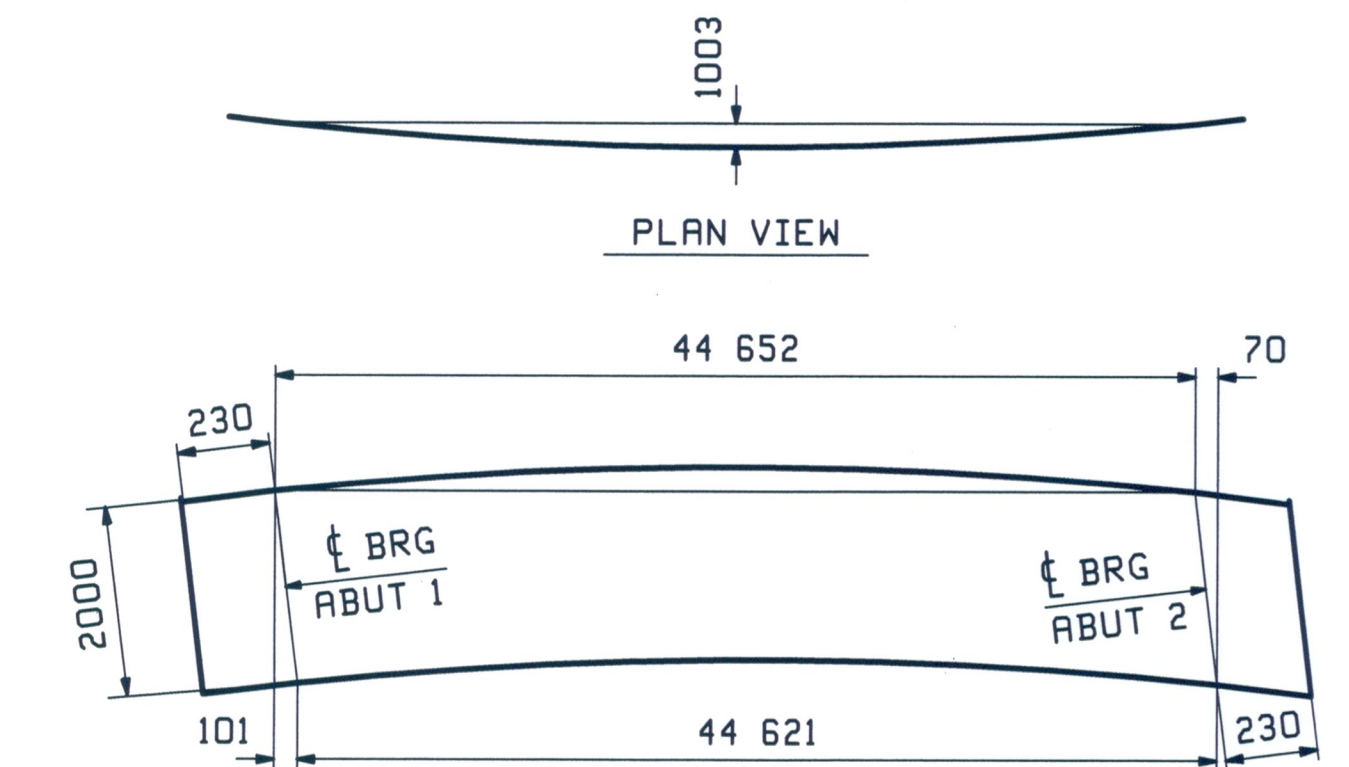


SEE CAMBER DIAGRAM

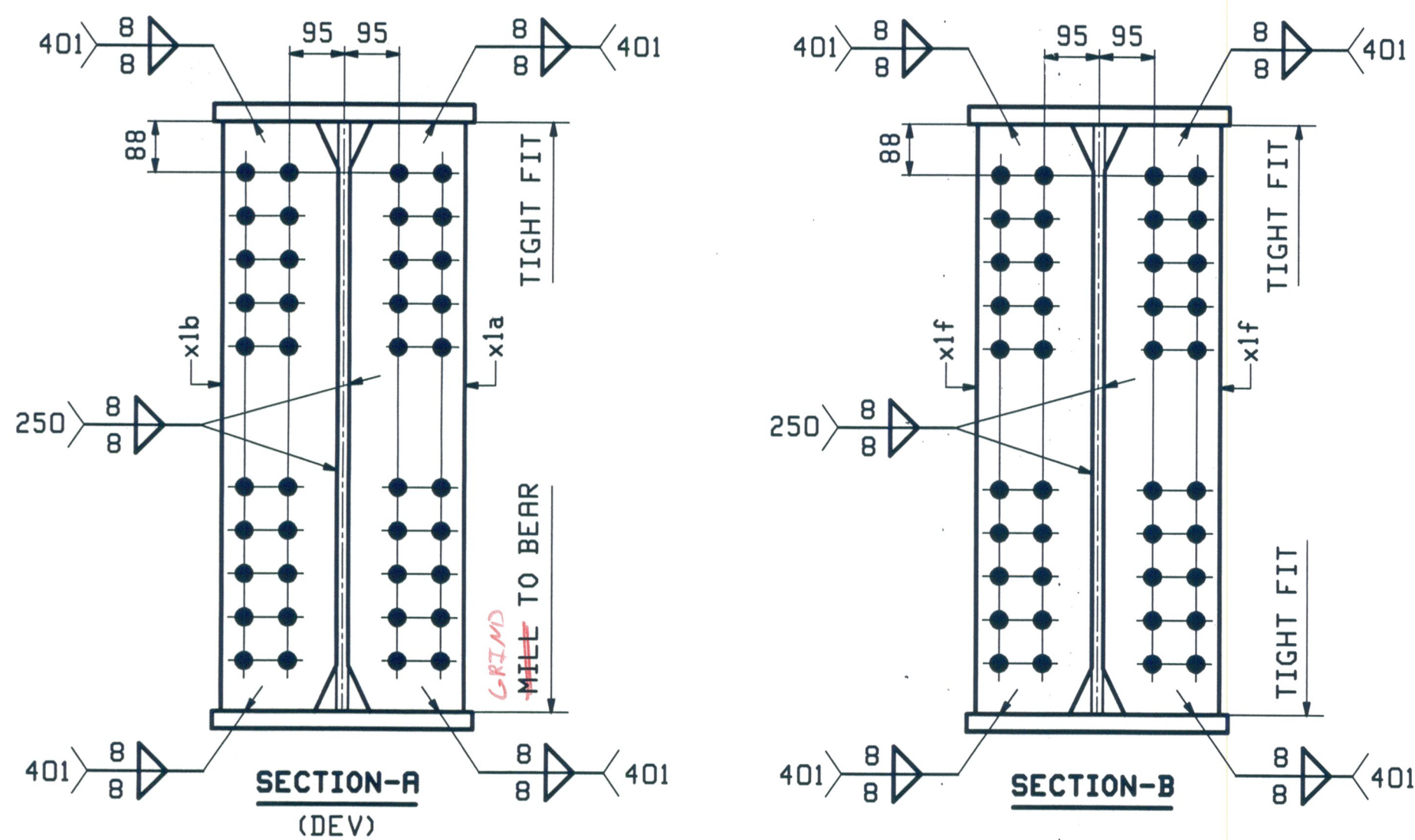
SEE CAMBER DIAGRAM

ONE - GIRDER - 2G2 (DEV)

SEE DRAWING GNI FOR GENERAL NOTES
 SEE DRAWING F1 FOR FLANGE DIAGRAM
 SEE DRAWING CI FOR CAMBER DIAGRAM
 SEE X1 DRAWING FOR GIRDER STANDARDS



DEV. ORIENTATION DIAGRAM



REV.	DATE	REMARKS	DWN	CHK	APVL	SHOP
0						AUG 30 2010
		MATERIAL: M270M-345WT2				SHOP BOLTS:
		SURFACE PREP. & PAINT: SEE SHT GNI				HOLES: 24 mm
DESCRIPTION: GIRDER 2G2						
CASCO BAY STEEL STRUCTURES, INC. 75 SPRING HILL ROAD SACO, MAINE 04072 PHONE (207) 282-7360 FAX. (207) 282-1179						
STRUCTURE: VT RTE 107 over STONEY BROOK BRIDGE 9 STOCKBRIDGE, VT COUNTY of WINDSOR					DRAWN: TG	DATE: 08/10
LOCATION: STOCKBRIDGE, VT					CHKD: SF	DATE: 08/23/10
PROJ NO. BRF 022-1(20)					JOB NO. 461	DWG NO. 2
CUSTOMER: AUSTIN CONSTRUCTION						REV. Δ

RECEIVED
 SEP 02 2010
 APPROVED *As*
 BY CPW DATE 9/29/10

508 - Max. Req. 25, 2010 08:55:57 AM - user: jbr/2010/2.1 Rev.0