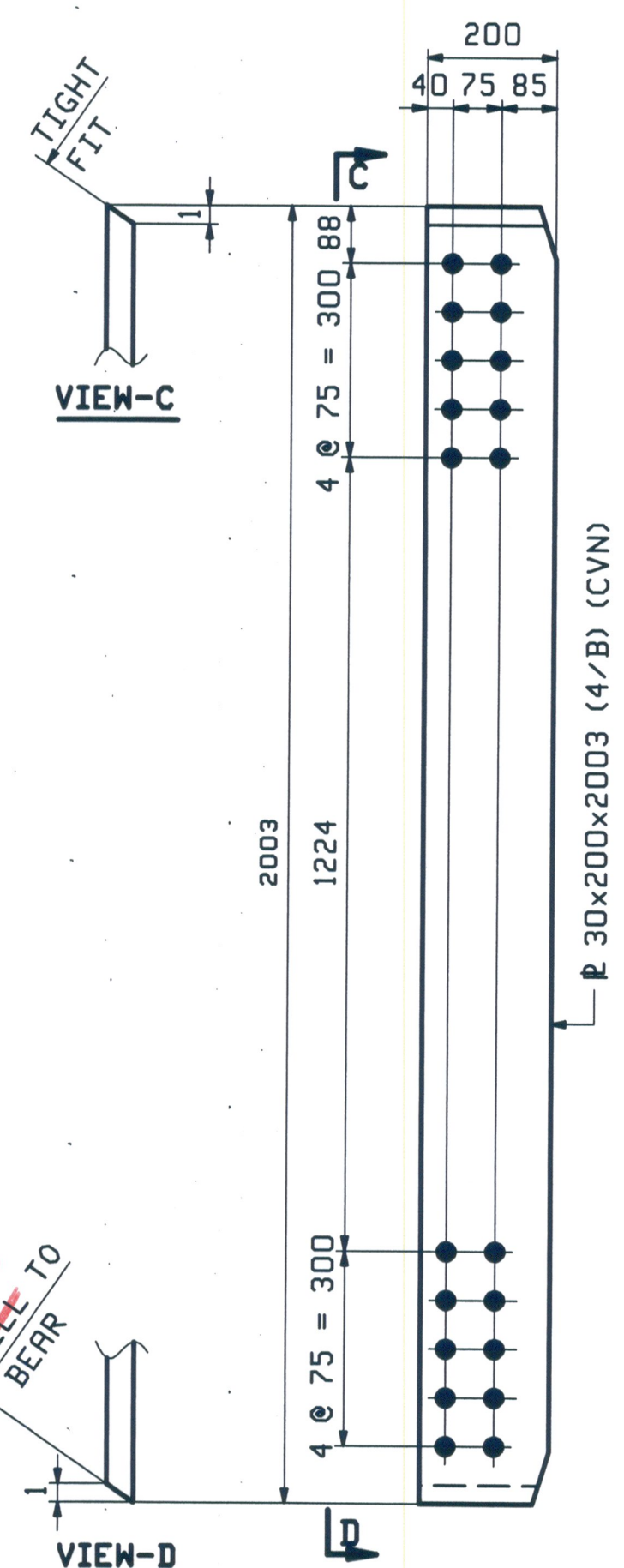
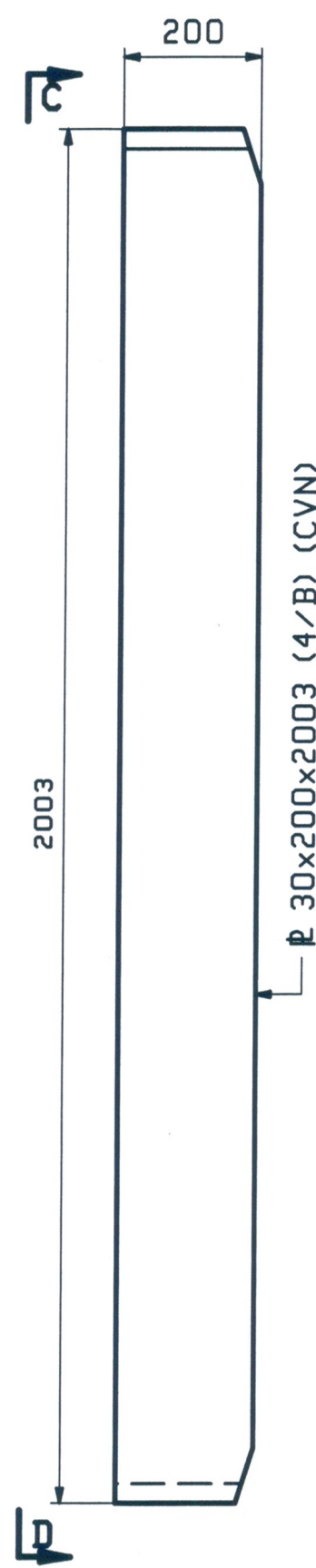


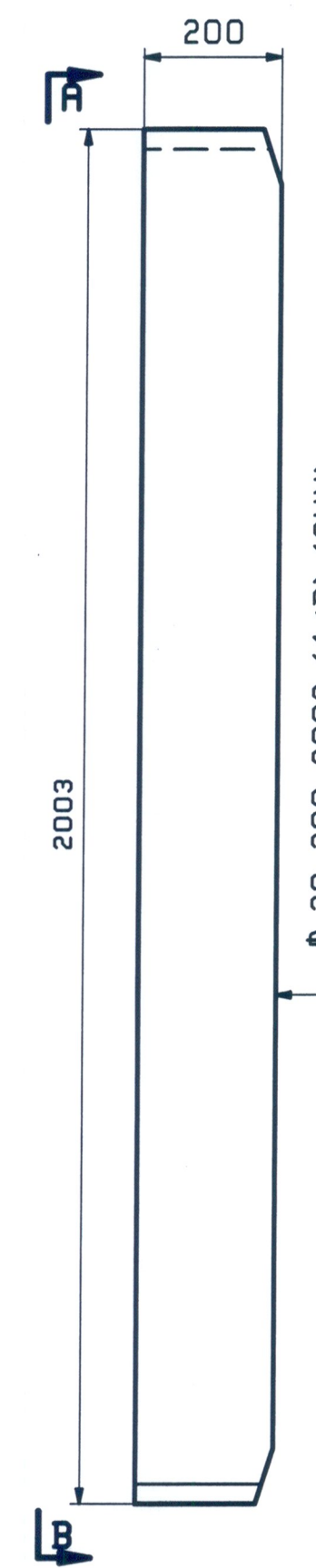
8 ~ BRG/CONN. STIFF ~ x1a
(FS @ ABUT 1 & ABUT 2)



8 ~ BRG/CONN. STIFF ~ x1b
(NS @ ABUT 1 & ABUT 2)



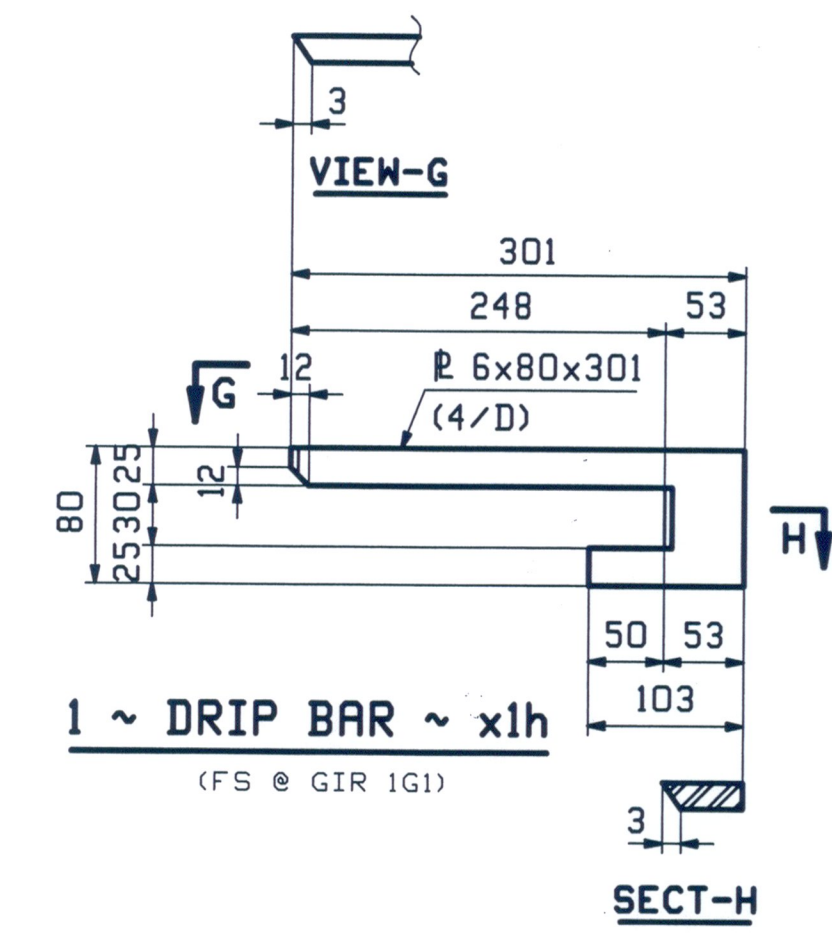
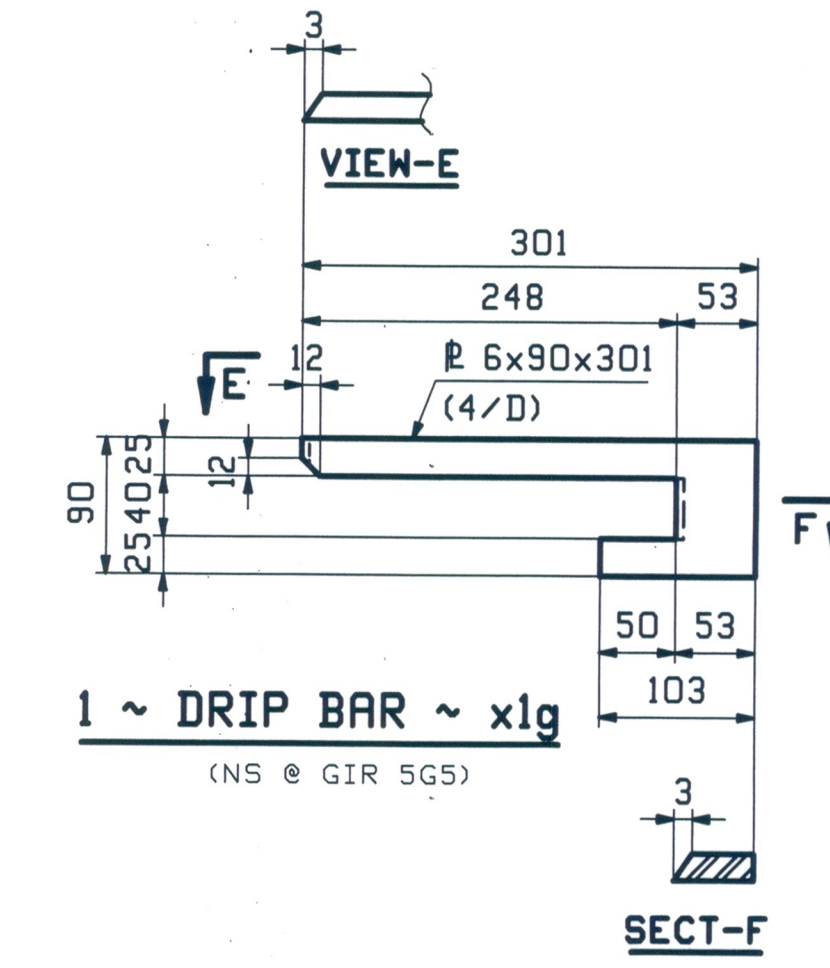
2 ~ BRG STIFF ~ x1c
(NS @ ABUT 1 & ABUT 2)




2 ~ BRG STIFF ~ x1d
(FS @ ABUT 1 & ABUT 2)



56 ~ CONN. STIFF ~ x1f
(INTERMEDIATE CROSSFRAME)



RECEIVED
 CKD BY: HES
 SEP 02 2010
 RESUBMIT APPROVED AS NOTED
 BY CPW DATE 9/29/10

0					11/10 30 2010	
REV.	DATE	REMARKS	DWN	CHK	APVL	SHOP
MATERIAL: (U.N.)		SURFACE PREP. & PAINT:	HOLES:		SHOP BOLTS:	
M270M-345W		SEE SHT GNI	24mm			
DESCRIPTION: GIRDER STANDARDS						
CASCO BAY STEEL STRUCTURES, INC.						
75 SPRING HILL ROAD			SACO, MAINE 04072			
PHONE (207) 282-7360			FAX. (207) 282-1179			
STRUCTURE: VT RTE 107 over STONEY BROOK			DRAWN:	DATE:		
BRIDGE 9			TG	08/09		
STOCKBRIDGE, VT			CHKD:	DATE:		
COUNTY of WINDSOR			SF	08/23/10		
LOCATION: STOCKBRIDGE, VT			JOB NO.	DWG NO.		
PROJ NO. BRF 022-1(20)			461	X1		
CUSTOMER: AUSTIN CONSTRUCTION				REV.		