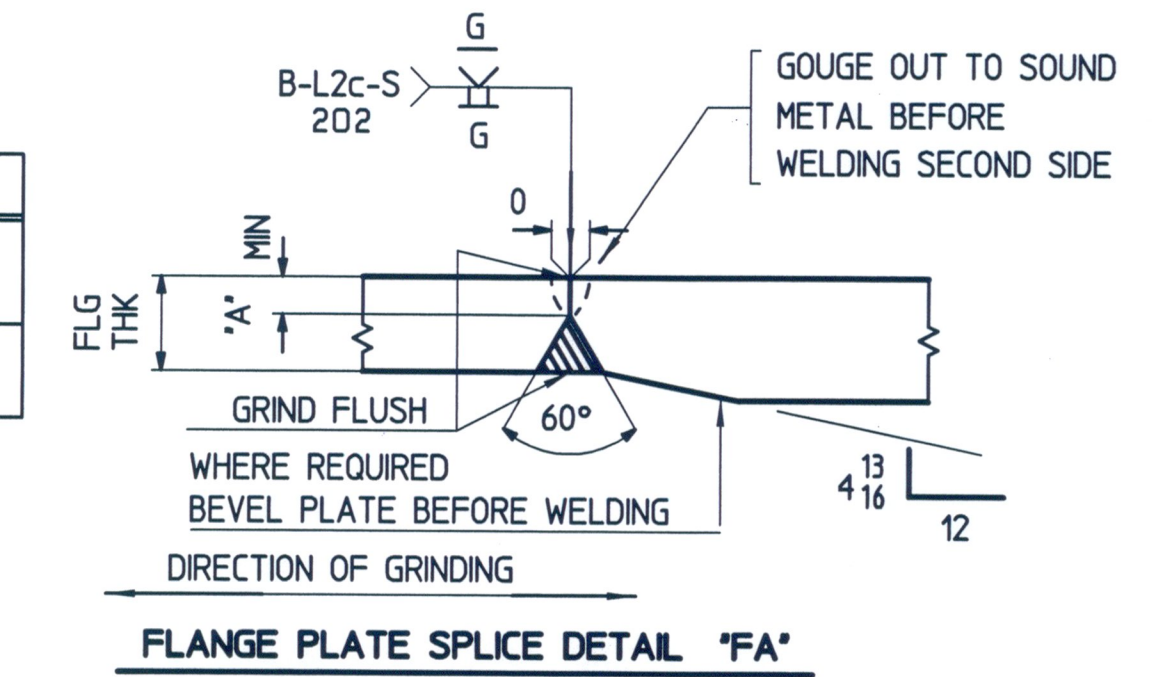
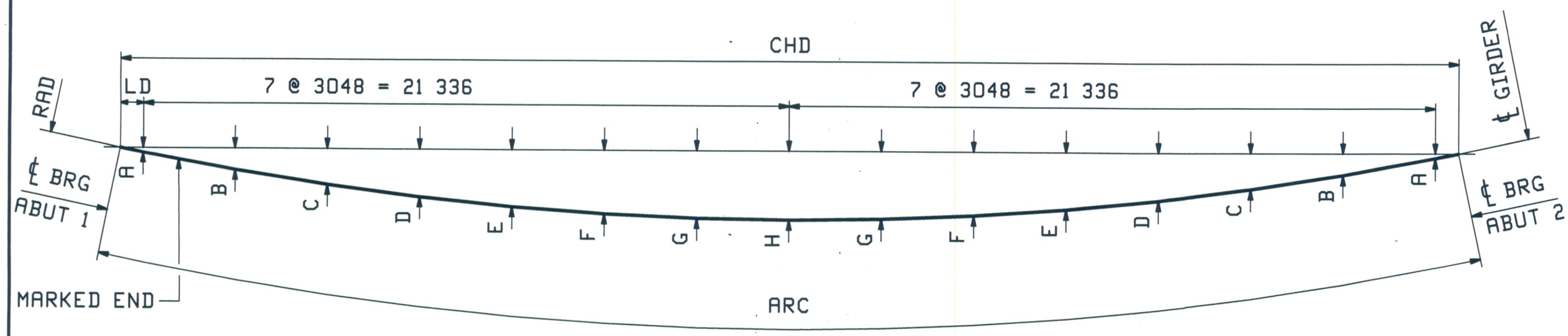
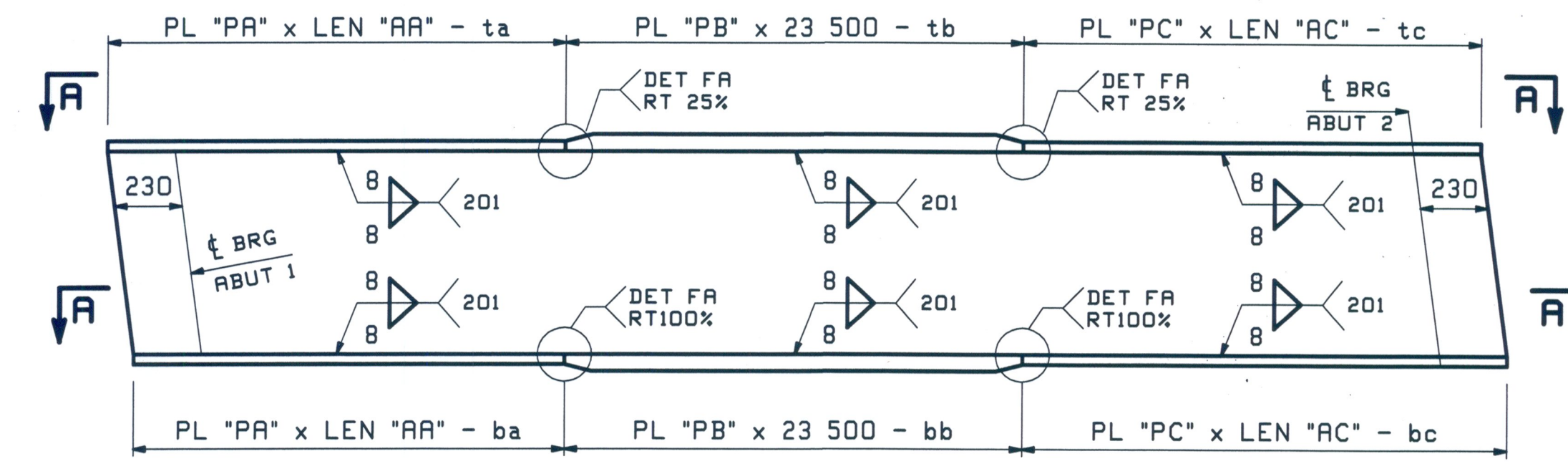


FLG THK	'A'
30	10
40	12



LOCATION	RAD	ARC	CHD	AA	AC	A1	A2	A4	CA	B1	B2	C1	C2	C4	CC	WL1	WL2	WL3	HD1	HD2
4G4 TOP FLG	252 250	45 926	45 863	11 243	11 183	63	47	2811	11 243	273	205	62	46	2795	11 182	11 217	23 491	11 155	771	768
4G4 BTM FLG	252 250	45 884	45 821	11 203	11 181	62	47	2801	11 202	273	205	62	46	2795	11 180	11 175	23 492	11 154	768	767
5G5 TOP FLG	254 500	46 332	46 268	11 448	11 384	64	48	2862	11 447	271	203	64	48	2846	11 383	11 420	23 492	11 356	783	780
5G5 BTM FLG	254 500	46 285	46 221	11 404	11 381	64	48	2851	11 403	271	203	63	48	2845	11 380	11 376	23 492	11 353	779	778

LOCATION	PL PA (M270M-345WT2)	PL PB (M270M-345WT2)	PL PC (M270M-345WT2)
4G4 TOP FLG	PL 30 x 450-ta (1/W)	PL 40 x 450-tb (1/C)	PL 30 x 450-tc (1/Y)
4G4 BTM FLG	PL 40 x 450-ba (1/G)	PL 60 x 450-bb (1/A)	PL 40 x 450-bc (1/G)
5G5 TOP FLG	PL 30 x 450-ta (1/S)	PL 40 x 450-tb (1/C)	PL 30 x 450-tc (1/U)
5G5 BTM FLG	PL 40 x 450-ba (1/E)	PL 60 x 450-bb (1/A)	PL 40 x 450-bc (1/E)



MARK	ARC	CHD	RAD	LD	A	B	C	D	E	F	G	H
1G1	44 218	44 158	245 500	743	68	313	521	691	824	918	975	994
2G2	44 621	44 561	247 750	944	86	328	534	703	834	928	984	1003
3G3	45 024	44 963	250 000	1146	103	343	548	715	845	938	993	1012
4G4	45 424	45 363	252 250	1345	120	358	561	727	855	947	1003	1021
5G5	45 825	45 763	254 500	1546	137	373	574	738	866	957	1012	1030

HEAT CURVE DIAGRAM FOR 1G1 THRU 5G5

RECEIVED
 CKD BY: HIZ, REV: RSY
 SEP 02 2010
 RESUBMIT APPROVED
 BY: CPW DATE: 9/29/10

FOR GENERAL NOTES SEE SHEET GNI

REV.	DATE	REMARKS	DWN	CHK	APVL	SHOP
0						
MATERIAL:		SURFACE PREP. & PAINT:		HOLES:		SHOP BOLTS:
M270M-345WT2		SEE SHT GNI				
DESCRIPTION: 4G4 & 5G5 FLANGE DIAGRAMS						
CASCO BAY STEEL STRUCTURES, INC. 75 SPRING HILL ROAD SACO, MAINE 04072 PHONE (207) 282-7360 FAX. (207) 282-1179						
STRUCTURE: VT RTE 107 over STONEY BROOK BRIDGE 9 STOCKBRIDGE, VT COUNTY of WINDSOR				DRAWN:	DATE:	
				TG	08/05	
				CHKD:	DATE:	
				SF	08/23/10	
LOCATION: STOCKBRIDGE, VT				JOB NO.	DNG NO.	
PROJ NO. BRF 022-1(20)				461	F2	
CUSTOMER: AUSTIN CONSTRUCTION					REV. <input type="checkbox"/>	