

REINFORCED EARTH®
8614 Westwood Center Drive, Vienna, VA 22182 (703)821-1175

PRECAST PANEL SHOP DRAWINGS

STRUCTURE COPY

PANEL GENERAL NOTES

- ALL PRECAST WORK SHALL BE DONE IN ACCORDANCE WITH VDOT STANDARD SPECIFICATION SECTION 540.
- 28 DAY COMPRESSIVE STRENGTH $f'_c = 35$ MPa. MINIMUM LIFTING STRENGTH SHALL BE $f_u = 25$ MPa. UNITS SHALL HAVE A SMOOTH FORM FINISH.
- PRECAST FACING PANELS, CORNER ELEMENTS, AND PRECAST COPING UNITS SHALL HAVE A SMOOTH FORM FINISH.
- REINFORCING BARS SHALL BE STEEL ASTM A615 GRADE 420 EPOXY COATED PER SPECIFICATION SECTION 540.
- THE STRIPS SHALL BE STEEL ASTM A1011 (FORMERLY ASTM A570) GRADE 345, 10 GAGE. (GALVANIZED PER ASTM A-123 = STANDARD SPECIFICATION 719-01, TYPE J) SEE SHEET S3 - DETAIL J.
- ALL STANDARD FACING PANELS SHALL HAVE TWO (2) LIFTING INSERTS OF 1-TON CAPACITY EACH. LIFTING INSERTS SHALL BE BURR-FREE SPREAD ANCHOR 75050 OR EQUAL. SEE DETAIL "LIFTING INSERT" SHEET S3. ALL LIFTING INSERTS SHALL BE GALVANIZED.
- ALL FRONT EDGES OF NEW PANELS, EXCEPT THE BOTTOM EDGE OF THE BOTTOM PANEL COURSE, SHALL HAVE A 10MM CHAMFER.
- DESIGN THICKNESS IS 140mm.
- DIMENSIONS SPECIFIED ON INDIVIDUAL FABRICATION DRAWINGS SUPERSEDE THOSE CALLED OUT ON THE STANDARD SECTIONS AND DETAILS (SHEETS S1 - S5).
- VERTICAL REINFORCING BARS SHALL BE PLACED 40mm MIN (50 mm TYP.) CLEAR FROM THE BACK FACE OF THE PANEL. CLEARANCE SHALL BE MAINTAINED BY THE USE OF PLASTIC REBAR HANGERS WHICH HANG OFF THE TIE STRIPS ON THE BACK FACE OF PANEL.
- ALL REINFORCING BARS SHALL BE STIPPED 30mm MIN CLEAR FROM ANY EDGE OF PANEL UNLESS NOTED ON INDIVIDUAL FABRICATION DRAWING OR AS INDICATED IN NOTE #12 AND SECTION A-A OF THIS SHEET.
- IN ALL SLOPED PANELS THE TWO (2) VERTICAL REINFORCING BARS ADJACENT TO A CORNER TIE STRIP SHALL BE OF THE SAME LENGTH.
- ALL INDIVIDUAL FABRICATION DRAWINGS ARE SHOWN BACK FACE.

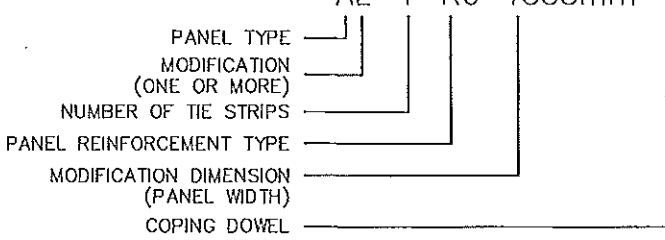
PANEL GENERAL NOTES (CONT.)

14. REINFORCING BARS IN A STANDARD "A" PANEL SHALL BE AS FOLLOWS:

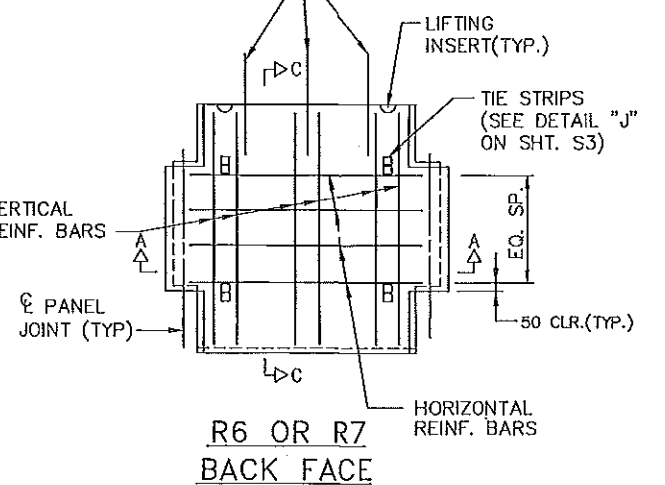
PANEL REINFORCEMENT		
PIECE MARK	HORIZONTAL BARS	VERTICAL BARS
XX-XX-R6	4-13M (#4) (EPOXY COATED)	6-10M (#3) (EPOXY COATED)
XX-XX-R7	4-13M (#6) (EPOXY COATED)	6-13M (#4) (EPOXY COATED)

HORIZONTAL REINFORCEMENT IN THE OTHER PANEL TYPES IS PROPORTIONAL TO THEIR RELATIVE HEIGHT.

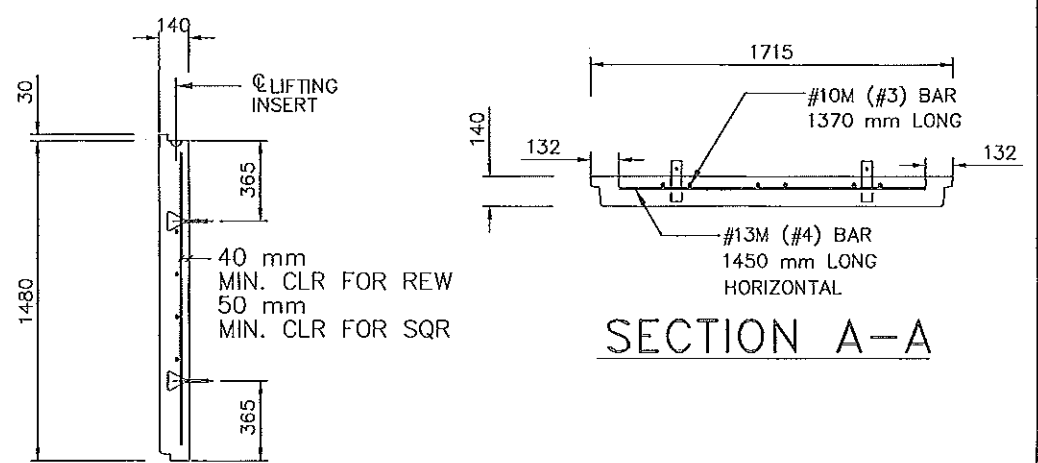
15. KEY TO PIECE MARK:



16. KEY TO PANELS:



SHEET #	DESCRIPTION
S1	PANEL CASTING NOTES
S2	PANEL SECTIONS
S3	REW PANEL DETAILS
S4	REW PANEL CROSS SECTIONS
S5	REW PANEL CROSS SECTIONS
S6	PANEL CASTING DRAWINGS
S7	PANEL CASTING DRAWINGS
S8	PANEL CASTING DRAWINGS
S9	PANEL CASTING DRAWINGS
S10	CORNER ELEMENT "CE2" DRAWINGS



RECEIVED
AUG 19 2010
RESUBMIT APPROVED
BY CPW DATE 8/26/10

SECTION C-C
CK'D BY: [Signature] OK'D BY: [Signature]
AUG 19 2010
RESUBMIT APPROVED
BY CPW DATE 8/26/10

RECEIVED
AUG 19 2010
RESUBMIT APPROVED
BY CPW DATE 8/26/10

