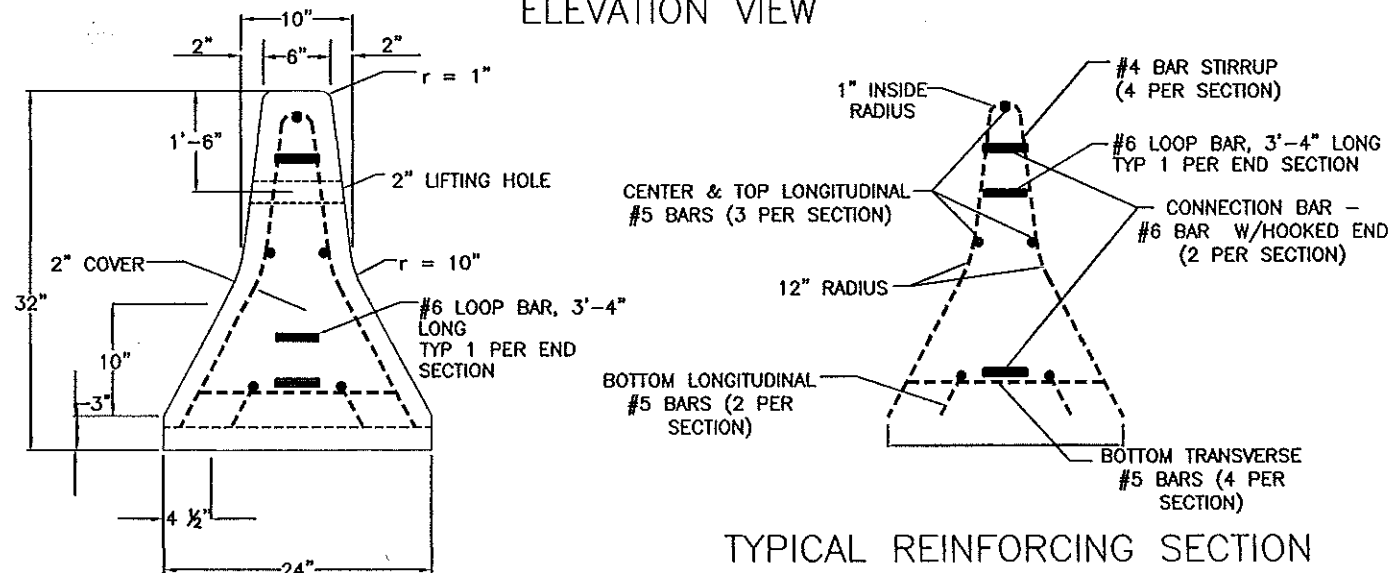
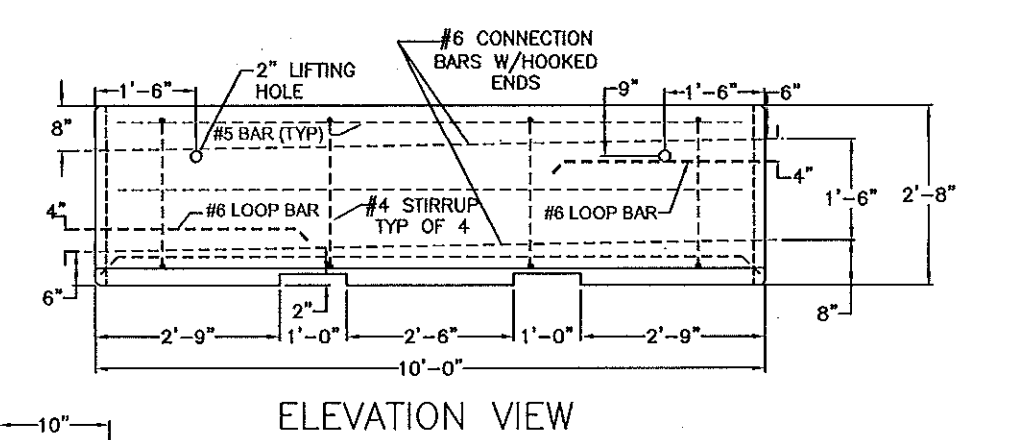
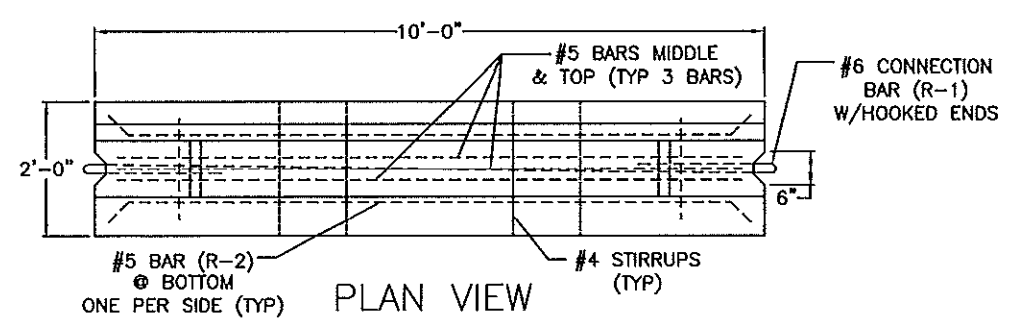




11 BUXTON INDUSTRIAL DRIVE
 PO BOX 870
 HENNIKER, NH 03242
 Phone (603) 428-3218
 Fax (603) 428-7547
 1-800-322-6948
 www.michlecorp.com

C O R P O R A T I O N

NHDOT TEMPORARY BARRIER - 10'-0" LENGTHS



- NOTES:
1. CONCRETE: 4,000 PSI @ 28 DAYS. CEMENT TO BE TYPE III PER ASTM C-150
 2. REINFORCING SHALL BE PER ASTM A-615, GRADE 60 DEFORMED BLACK BARS AND HAVE MINIMUM 2" COVER.
 3. BARRIER TO BE MANUFACTURED PER NHDOT SPECIFICATIONS STANDARD PLATE NO. GR-4 (7-26-95).
 4. ALL EXPOSED EDGES OF CONCRETE SHALL BE HAVE A 1" RADIUS EXCEPT AS SHOWN.
 5. THIS BARRIER AND CONNECTIONS MATCHES NHDOT STANDARDS WHICH MEET OR EXCEED NCHRP REPORT 350 @ TL-3.