

Bituminous Concrete Curb, Type A
10+120.00 - 10+163.60 Lt.
Manufactured Terminal Section, Flared
10+242.40 - 10+253.60 Rt.
Removal and Disposal of Guardrail
10+120.00 - 10+180.00 Rt.
10+227.00 - 10+243.00 Rt.
Construct Drive
10+260.00 Rt - 35M Gravel,
2.0M Paved Apron, 10.6M Wide

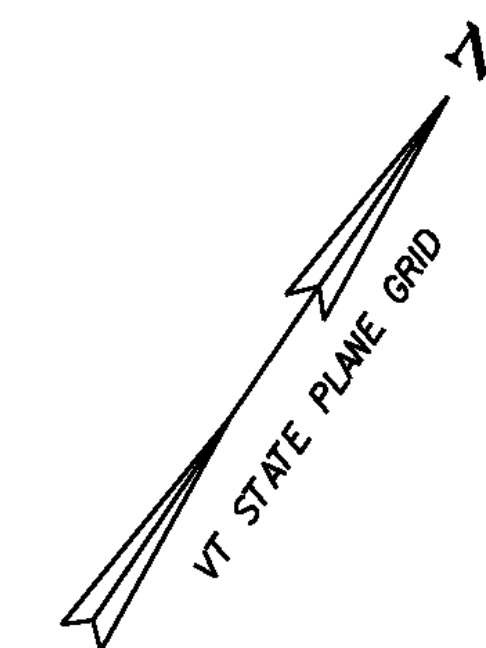
Beam Guardrail, Galvanized *
10+165.10 Lt.
10+045.00 Rt. (10+154.19 Rt.)
10+160.44 Rt.) - 10+165.52 Rt.
Rt.
Rt.

SHEET
4 RAIL LIMITS

SEE DRAINAGE DETAIL SHEET
FOR DRAINAGE FLAG DESCRIPTIONS

Cast-in-place Concrete Curb, type B
10+163.60 ~ 10+175.05 Lt.
10+163.45 ~ 10+175.05 Rt.
10+221.64 ~ 10+233.35 Rt.
10+221.67 ~ 10+233.85 Lt.

Construct Infiltration Basin/Plunge Pool
10+170.000 Rt.
Disconnection Area
per Stormwater Permit #4233-INDS
10+223 - 10+275 Lt.



LINES SHOWN ON THIS PLAN AS EXISTING
PROPERTY LINES P/L ARE BELIEVED TO
BE ACCURATE BUT SHOULD NOT BE RELIED
UPON FOR PURPOSES UNRELATED TO THE
STATE OF VERMONT'S ACQUISITION OF LAND
AND RIGHTS FOR THIS PROJECT.

1E

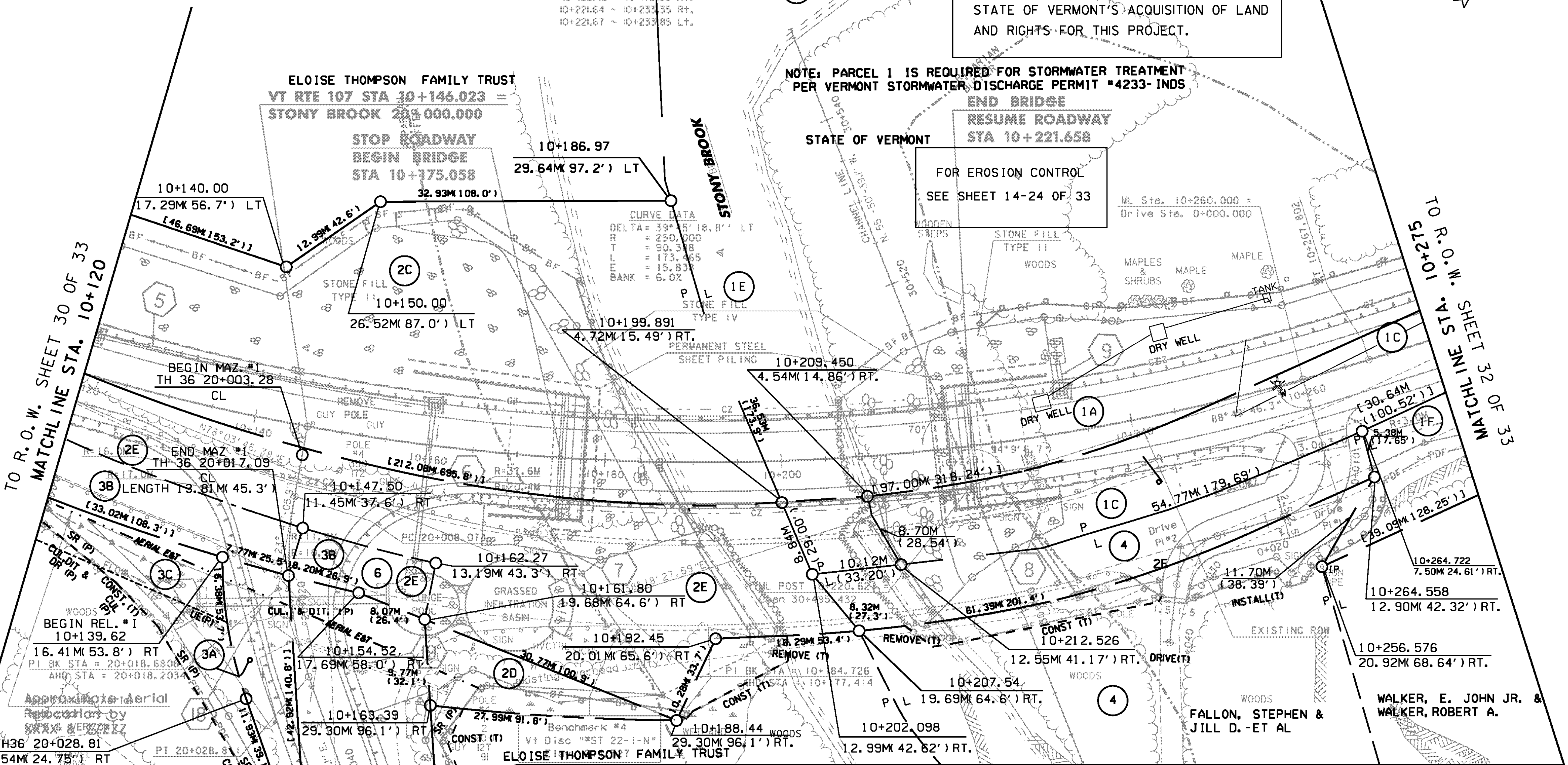
NOTE: PARCEL 1 IS REQUIRED FOR STORMWATER TREATMENT
PER VERMONT STORMWATER DISCHARGE PERMIT #4233-INDS

FOR EROSION CONTROL
SEE SHEET 14-24 OF 33

ELOISE THOMPSON FAMILY TRUST
VT RTE 107 STA 10+146.023 =
STONY BROOK 20+000.000
STOP ROADWAY
BEGIN BRIDGE
STA 10+175.058

END BRIDGE
RESUME ROADWAY
STA 10+221.658

STATE OF VERMONT



TO R.O.W. SHEET 30 OF 33
MATCHLINE STA. 10+120

TO R.O.W. SHEET 32 OF 33
MATCHLINE STA. 10+215

BURCHYNS, RAYMOND C. &
PRISCILLA T.
TH36 20+028.81
7.54M 24.75' RT
TH36 20+040.74
7.54M 24.75' RT
PC 20+040.741

MATCHLINE STA. 20+045
TO ROW SHEET 33 OF 33

STONY BROOK RD
CURVE ONE DATA
DELTA = 29° 42' 17" LT
R = 40.000 m
T = 10.608 m
L = 20.738 m
E = 1.383 m

DRIVE CURVE DATA
CURVE ONE
PC = 0+007.80
PI* = BK STA = 0+014.297
= AH STA = 0+011.507
PT = 0+018.007
Δ = 89°-59'-52.9" Rt.
R = 6.500
T = 6.500
L = 10.210
E = 2.692
Bearings
S. 50°-31'-12.9" E. bk
S. 39°-28'-40.0" W. ahd

DRIVE CURVE DATA
CURVE TWO
PC = 0+025.833
PI* = BK STA = 0+030.126
= AH STA = 0+029.129
PT = 0+033.422
Δ = 66°-53'-32.6" Lt.
R = 6.500
T = 4.293
L = 7.589
E = 1.290
Bearings
S. 39°-28'-40.0" W. bk
S. 27°-24'-52.7" E. ahd

EXISTING BRIDGE
3 SPAN CURVED CONCRETE "T" BEAM
WITH SPILL THRU ABUTMENTS AND
2 - 1m WIDE PIERS
BUILT IN 1930, WIDENED IN 1964
53.95M LONG, 6.81m WIDE
9m OF CLEARANCE OVER STREAM

FALLON, STEPHEN &
JILL D. - ET AL
WALKER, E. JOHN JR. &
WALKER, ROBERT A.

FOR R.O.W.
USE ONLY



R.O.W. LAYOUT 3

PROJECT NAME: STOCKBRIDGE	PLOT DATE: 08-APR-2010
PROJECT NUMBER: BRF 022-1(20)	DRAWN BY: H. I. SALLS
FILE NAME: 85e039/de039bdr.dgn	CHECKED BY: R.S. YOUNG
PROJECT LEADER: C.P. Williams	SHEET 92 OF 139
DESIGNED BY: R.S. YOUNG	
ROW SHEET 31 OF 33	