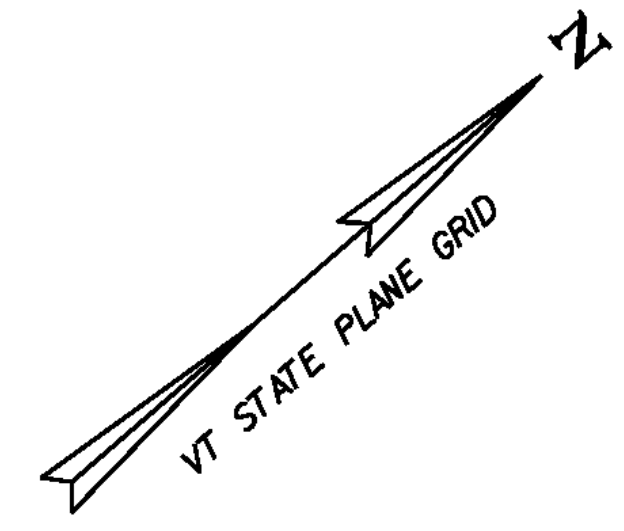
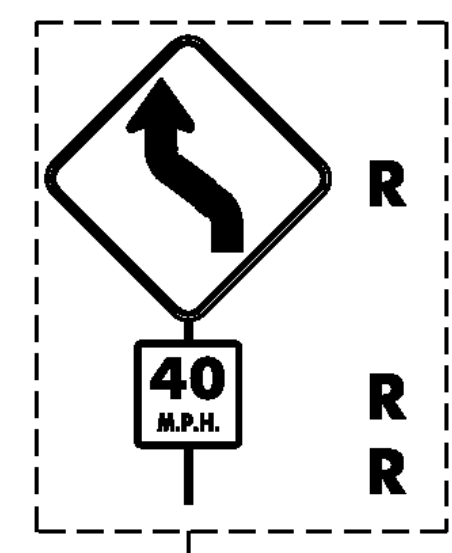
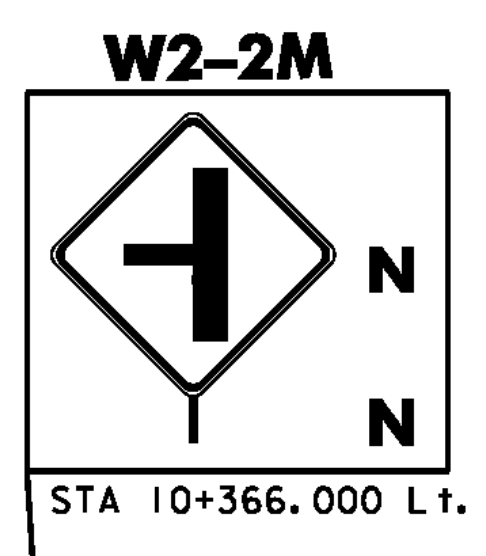
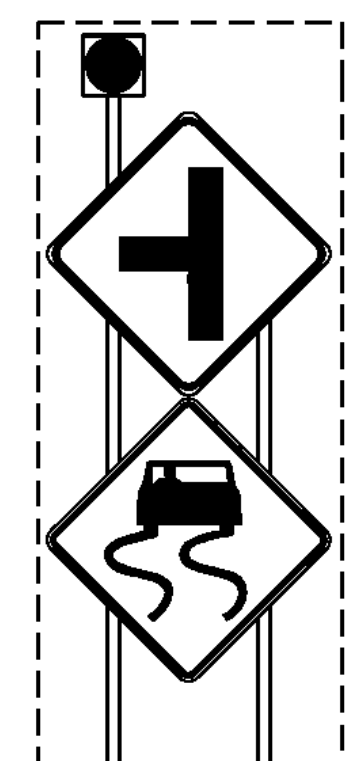


WHITE RIVER

SIGN LEGEND

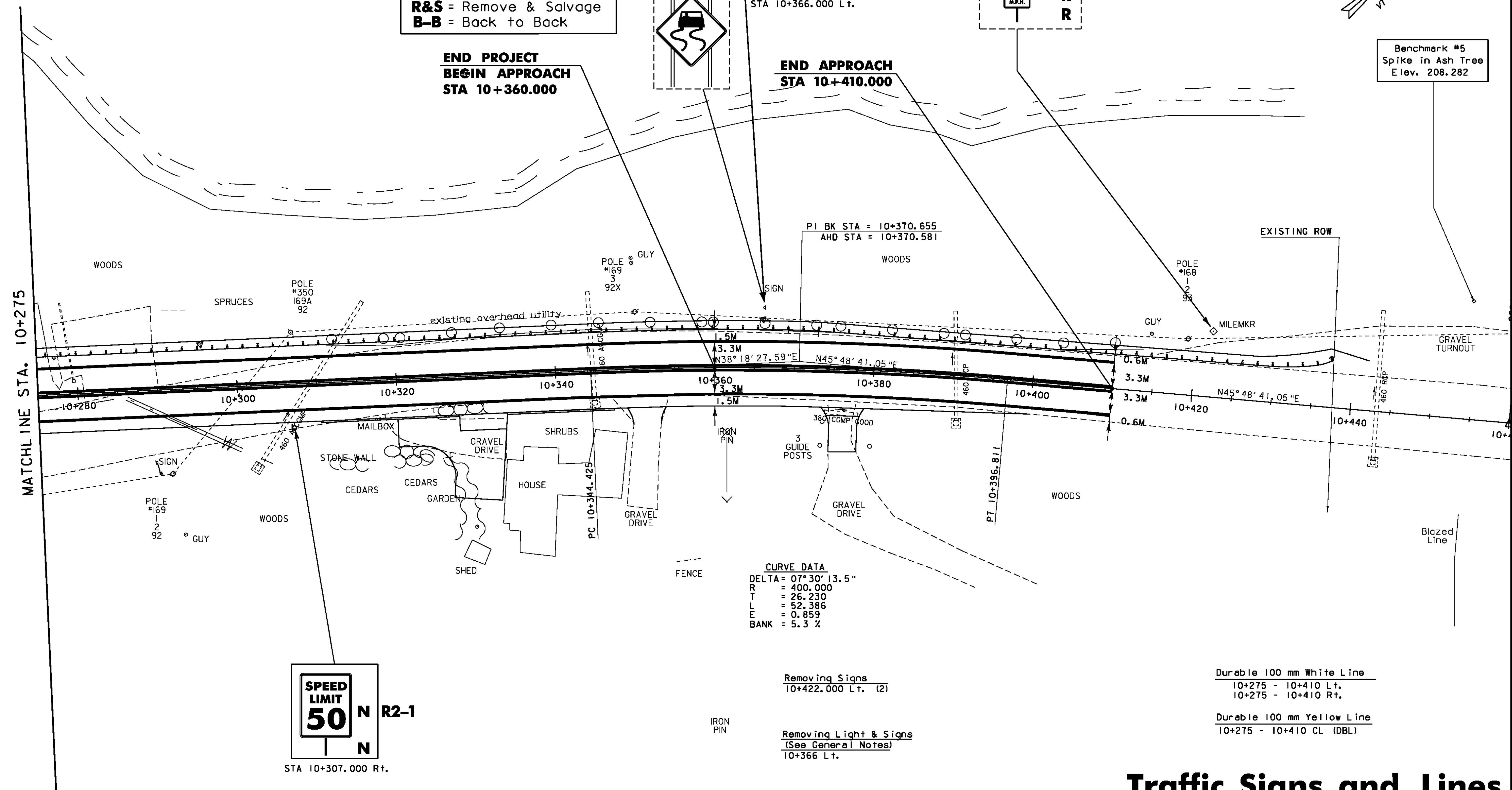
R = Remove
 N = New
 S = Salvage sign
 RET = Retain sign
 R&S = Remove & Salvage
 B-B = Back to Back



Benchmark #5
 Spike in Ash Tree
 Elev. 208.282

**END PROJECT
 BEGIN APPROACH
 STA 10+360.000**

**END APPROACH
 STA 10+410.000**



PI BK STA = 10+370.655
 AHD STA = 10+370.581

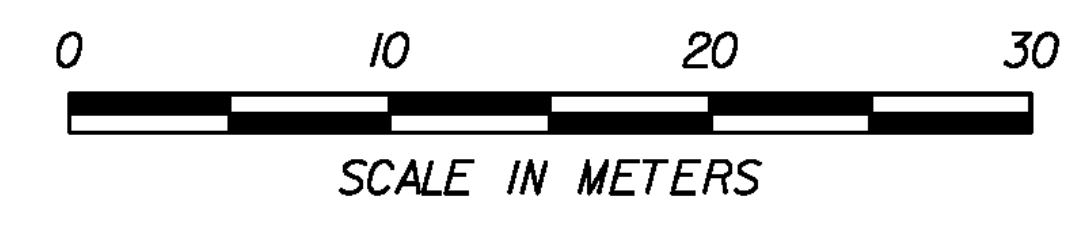
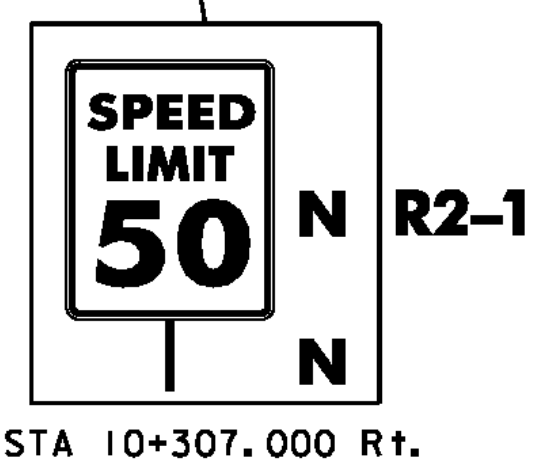
CURVE DATA
 DELTA = 07° 30' 13.5"
 R = 400.000
 T = 26.230
 L = 52.386
 E = 0.859
 BANK = 5.3 %

Removing Signs
 10+422.000 Lt. (2)

Removing Light & Signs
 (See General Notes)
 10+366 Lt.

Durable 100 mm White Line
 10+275 - 10+410 Lt.
 10+275 - 10+410 Rt.

Durable 100 mm Yellow Line
 10+275 - 10+410 CL (DBL)



Traffic Signs and Lines Layout 4

PROJECT NAME: STOCKBRIDGE	FILE NAME: 85e039/de039bdr.dgn	PLOT DATE: 08-APR-2010
PROJECT NUMBER: BRF 022-1(20)	PROJECT LEADER: C. P. WILLIAMS	DRAWN BY: H. I. SALLS
	DESIGNED BY: H.I. SALLS	CHECKED BY: R.S. Young
	TRAFFIC SIGNS AND LINES LAYOUT 4	SHEET 84 OF 139