

Benchmark #2
Goddard Az Mark
Elev. 225.690

SURVEY MARKER
RET

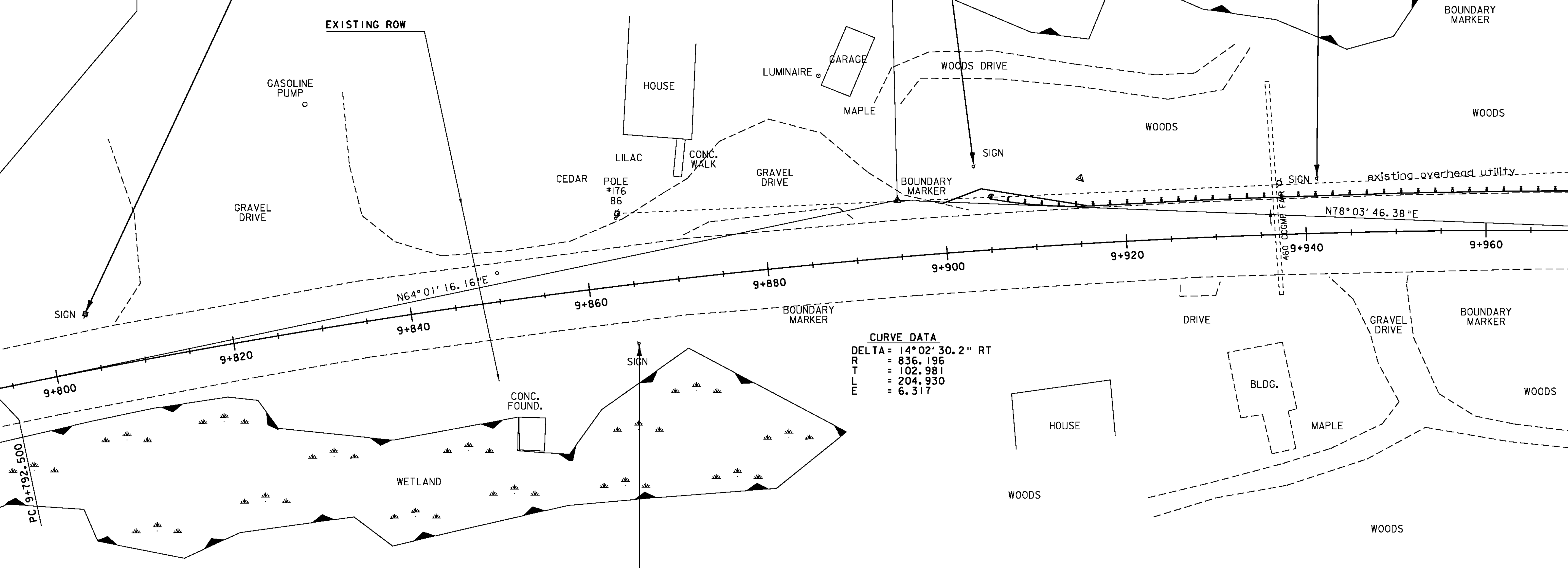
Removing Signs
STA 9+865.000 (2)

MAPLE SYRUP SOLD HERE
RET

RET

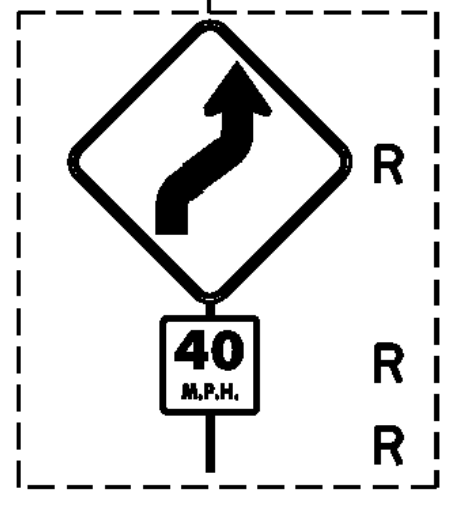
PI BK STA = 9+895.481
AHD STA = 9+894.449

EXISTING ROW



CURVE DATA
DELTA = 14° 02' 30.2" RT
R = 836.196
T = 102.981
L = 204.930
E = 6.317

MATCHLINE STA. 9+970



SIGN LEGEND
R = Remove
N = New
S = Salvage sign
RET = Retain sign
R&S = Remove & Salvage
B-B = Back to Back

Traffic Signs and Lines Layout 1



PROJECT NAME: STOCKBRIDGE
PROJECT NUMBER: BRF 022-1(20)
FILE NAME: 85e039/de039bdr.dgn
PLOT DATE: 08-APR-2010
PROJECT LEADER: C. P. WILLIAMS
DRAWN BY: H. I. SALLS
DESIGNED BY: R. S. YOUNG
CHECKED BY: R.S. Young
TRAFFIC SIGNS AND LINES LAYOUT 1
SHEET 81 OF 139