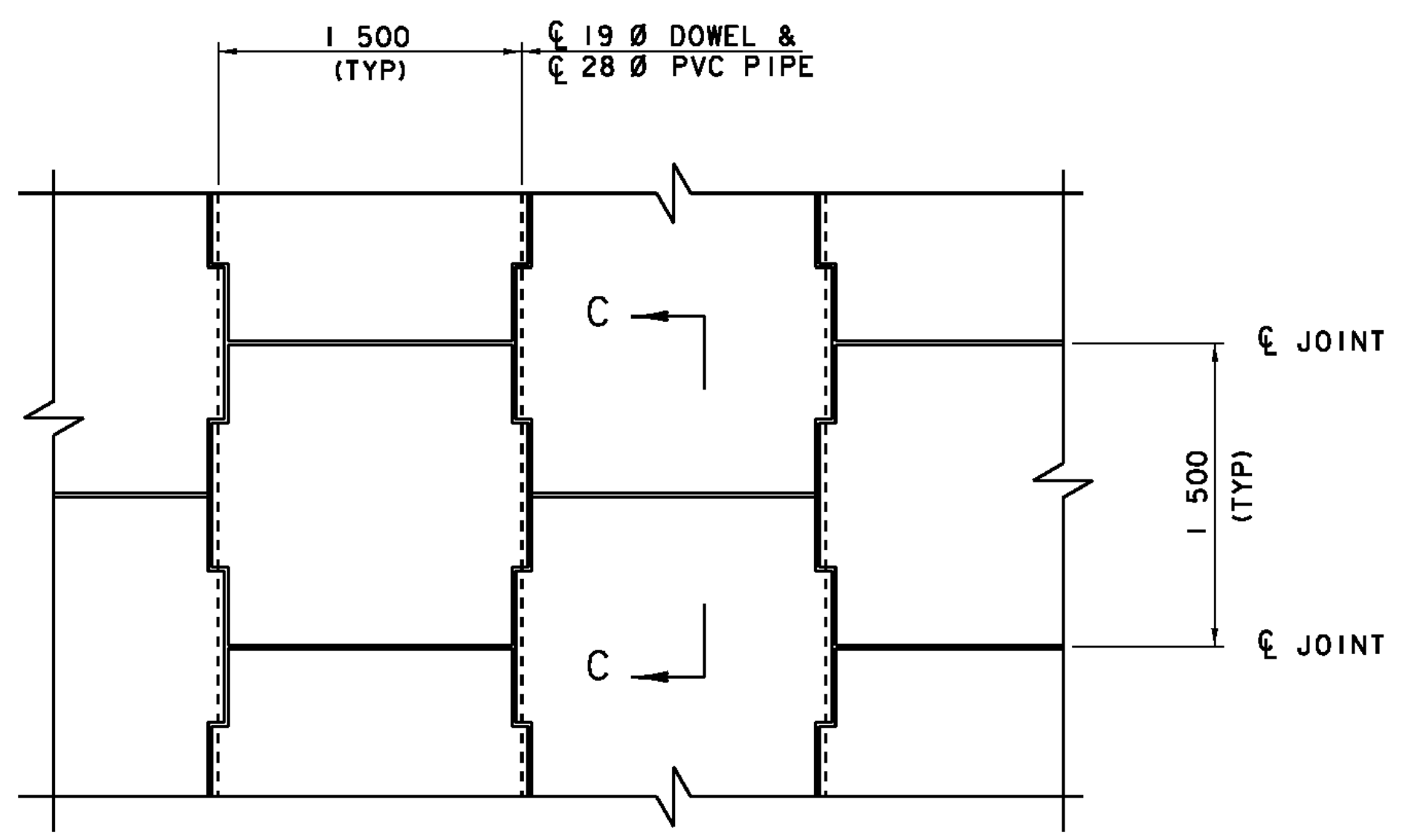


**C.I.P. CONCRETE COPING
PARTIAL ELEVATION - FRONT FACE**

NTS

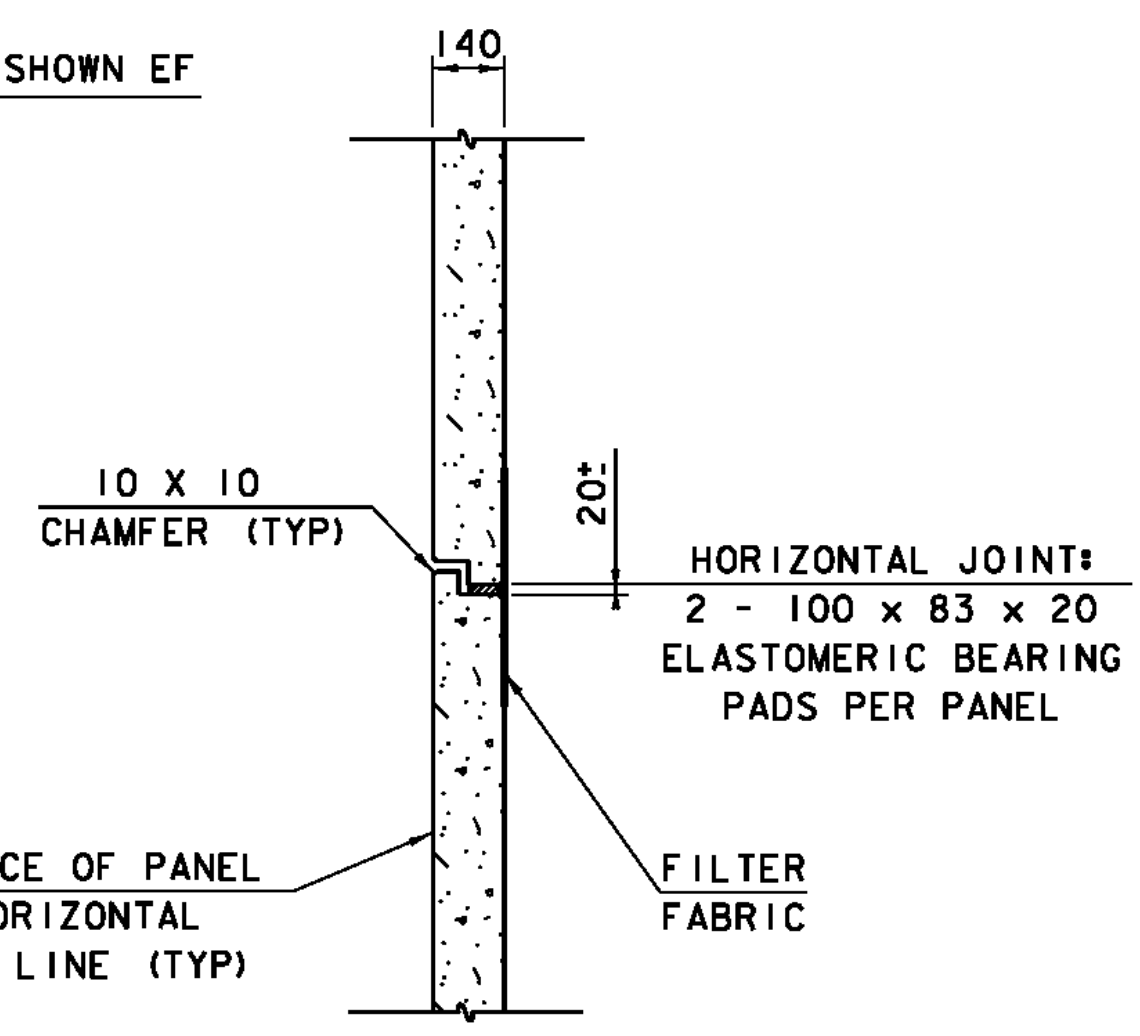
NOTE:

JOINTS IN C.I.P CONCRETE COPING SHALL BE AT 2 PANEL INTERVALS AND COINCIDE APPROXIMATELY WITH PANEL JOINTS. REINFORCING STEEL SHALL BE STOPPED 80 mm SHORT OF EITHER SIDE OF CONSTRUCTION AND EXPANSION JOINTS. JOINT FILLER (CORK) BOND BREAKER MATERIAL SHALL BE PLACED BETWEEN THE PANELS AND THE COPING TO PREVENT CRACKING.



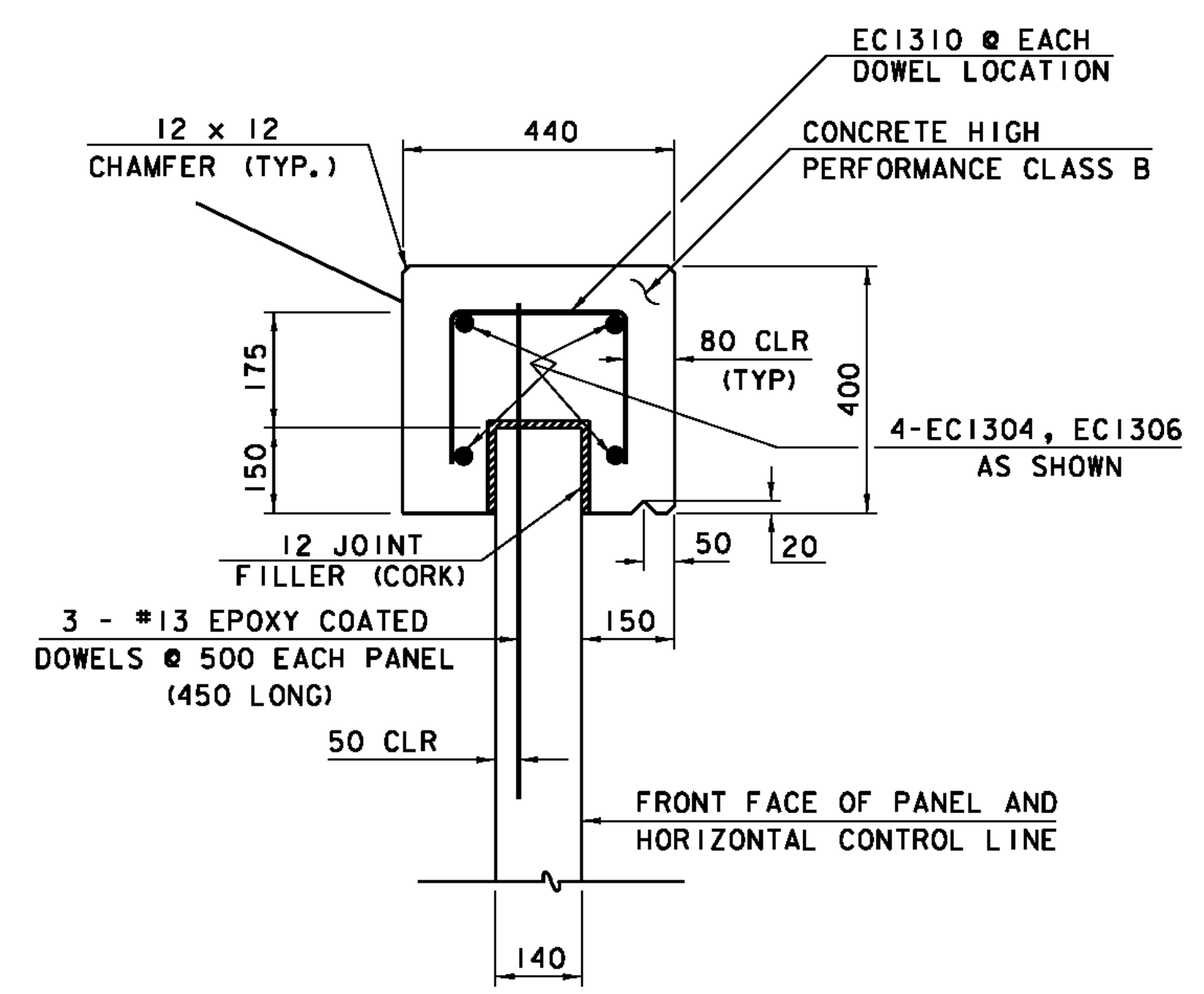
**TYPICAL PANEL LAYOUT
PARTIAL ELEVATION - FRONT FACE**

NTS



SECTION C-C

NTS



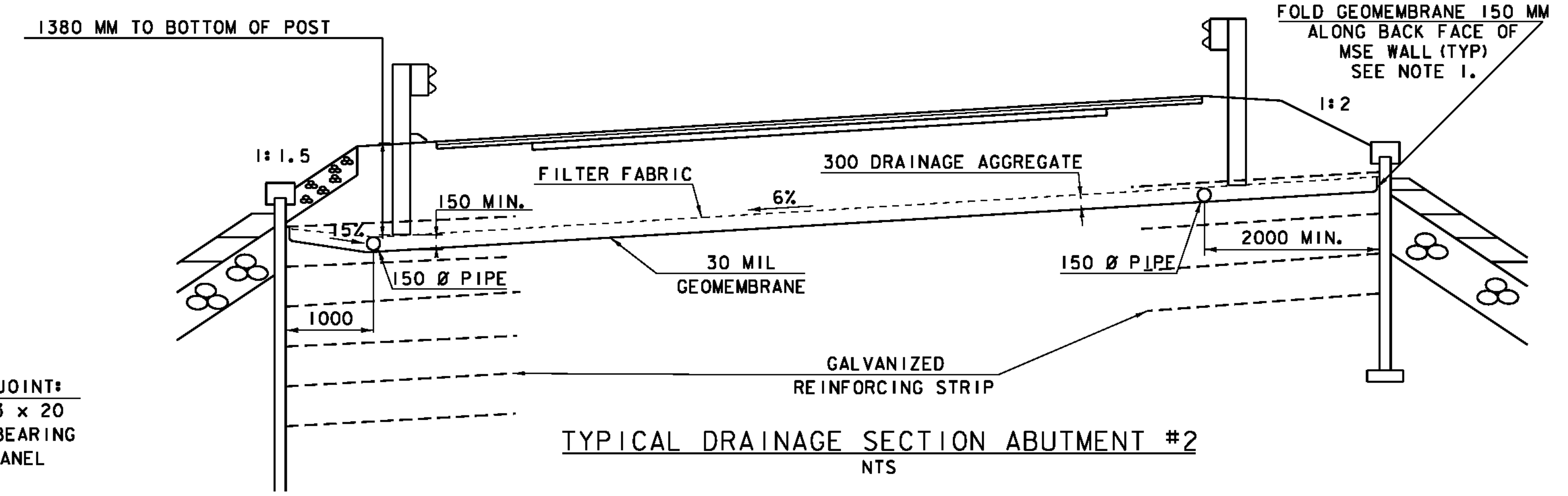
CAST-IN-PLACE CONCRETE COPING *

NTS

* USE THIS DETAIL FROM END OF MSE WALL TO BEGIN/END BRIDGE USE ABUTMENT COPING SECTION AROUND ABUTMENTS

NOTES:

1. THE #13 DOWELS SHALL BE CAST INTO THE PRECAST MSE WALL PANELS. THE DOWELS SHALL BE GRADE 420 EPOXY COATED REINFORCING STEEL.
2. THE CONTRACTOR SHALL EXERCISE CARE NOT TO STAIN THE MSE WALL PANELS WHEN PLACING CAST-IN-PLACE CONCRETE. ANY STAINING AS A RESULT OF CONCRETE PLACEMENT SHALL BE REMOVED AT THE CONTRACTOR'S EXPENSE.
3. THE DRILLING OF HOLES IN THE PRECAST MSE WALL PANELS FOR THE PURPOSE OF FORMING SHALL NOT BE ALLOWED.

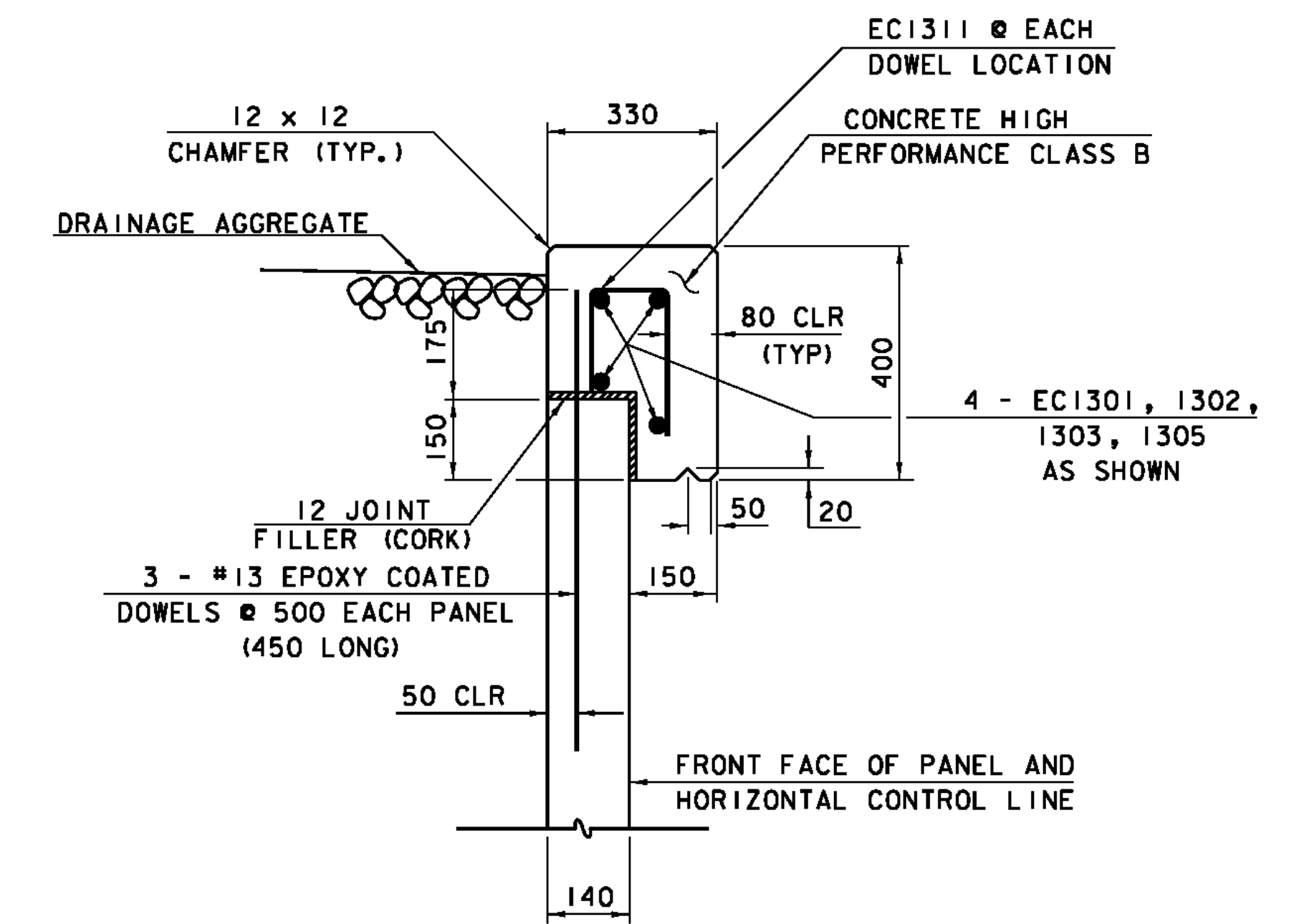


TYPICAL DRAINAGE SECTION ABUTMENT #2

NTS

NOTES:

1. A 30 MIL GEOTEXTILE MEMBRANE SHALL BE INSTALLED ON TOP OF THE SELECT FILL. THE MEMBRANE SHALL SLOPE BACK FROM THE MSE WALLS AND THE BACKWALL AS SHOWN ABOVE TO CONVEY WATER TO A PVC PIPE LOCATED IN THE BACKWALL OF THE ABUTMENT. A 150 MM FOLD OF MEMBRANE SHALL BE ATTACHED TO THE BACK FACE OF THE MSE WALL WITH AN ADHESIVE. THE MEMBRANE AND ADHESIVE SHALL MEET THE REQUIREMENTS OF THE MSE WALL MANUFACTURER. GEOTEXTILE MEMBRANE, ADHESIVE, AND ANY EQUIPMENT NECESSARY FOR INSTALLATION SHALL BE INCLUDED UNDER ITEM 900.675 "SPECIAL PROVISION (MECHANICALLY STABILIZED EARTH RETAINING WALL)".
2. THE PIPES SHALL BE 150 MM DIAMETER, PERFORATED, MEET THE REQUIREMENTS OF SUBSECTION 710.06 AND PLACED IN A 150 MM LAYER OF DRAINAGE AGGREGATE COVERED BY FILTER FABRIC. THE PIPE AND ANY ADDITIONAL PVC PIPE FITTINGS, ADHESIVES DEEMED NECESSARY BY THE RESIDENT ENGINEER TO CONNECT UNDERDRAIN TO THE OUTLET FRP PIPE SHALL BE PAID FOR UNDER ITEM 900.675 SPECIAL PROVISION (MECHANICALLY STABILIZED EARTH RETAINING WALL).
3. THE DRAINAGE AGGREGATE SHALL MEET THE REQUIREMENTS OF SUBSECTION 704.16. THE FILTER FABRIC SHALL MEET THE REQUIREMENTS OF SECTION 720. PAYMENT FOR THE DRAINAGE AGGREGATE AND FILTER FABRIC SHALL BE INCLUDED UNDER ITEM 900.675 "SPECIAL PROVISION (MECHANICALLY STABILIZED EARTH RETAINING WALL)".



ABUTMENT COPING SECTION

NTS

NOTE:

NF = NEAR FACE
FF = FAR FACE
EF = EACH FACE
▲ = CUT TO FIT IN FIELD
80 CLR. UNLESS OTHERWISE SPECIFIED ON THE PLANS.

DETAILS ON THIS SHEET ARE NOT TO SCALE

PROJECT: STOCKBRIDGE	PROJECT NO. # BRF 022-1 (20)
--------------------------------	--

DESIGN FILE NAME: str4/85e039mse.dgn	PLOT DATE: 08-APR-2010
IPARM FILE NAME: de039msede12.i	DRAWN BY: M. GAGULIC
DESIGNED BY: M. GAGULIC	CHECKED BY: R. S. YOUNG
SQUAD LEADER: C. P. WILLIAMS	MSE WALL DETAILS 2
	SHEET: 73 OF 139