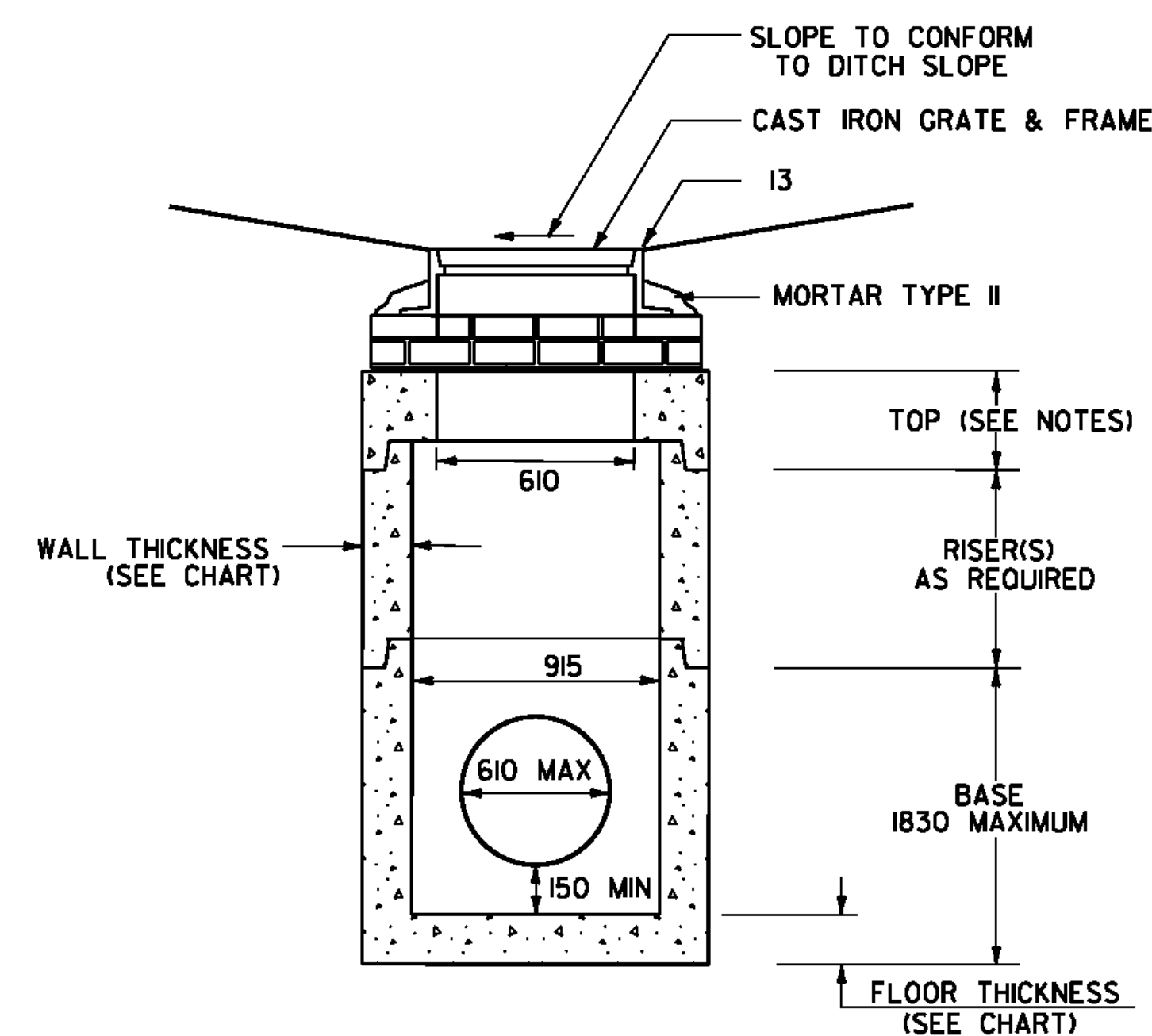


### SIZING CHART

DIAMETER	WALL THICKNESS	FLOOR THICKNESS
1220 OR SMALLER	130	150
1520	150	200
1830	175	200
2130	200	250
2440	230	250



### PRECAST DROP INLET IN DITCH

N. T. S.

### NOTES

1. ALL PRECAST CONCRETE DROP INLETS AND CATCH BASINS SHALL BE DESIGNED AND MANUFACTURED IN ACCORDANCE WITH SUBSECTION 705.04.
2. THE CONTRACTOR IS RESPONSIBLE FOR VERIFYING ALL INVERT ELEVATIONS, PIPE SIZES AND LOCATIONS SHOWN PRIOR TO ORDERING THE PRECAST COMPONENTS.
3. SEE STANDARD D-16 FOR CAST IRON FRAME AND GRATE DETAILS.
4. THE TOP SECTIONS MAY BE EITHER THE FLAT TOPS AS SHOWN OR CONE SECTIONS. IF CONE SECTIONS ARE USED THEY MAY EITHER BE CONCENTRIC OR ECCENTRIC. PIPES ARE NOT TO ENTER CONE SECTIONS.
5. PRECAST SECTIONS SHALL HAVE A TONGUE AND GROOVE JOINT 100 mm HIGH AT AN ANGLE OF 11 DEGREES CENTERED IN THE WIDTH OF THE JOINT. ALL SECTIONS SHALL BE ASSEMBLED USING AN APPROVED FLEXIBLE SEALANT.
6. ALL SECTIONS WITH MULTIPLE PIPES SHALL HAVE A MINIMUM OF 300 OF OUTSIDE SURFACE BETWEEN HOLES. NO MORE THAN 75% OF A HORIZONTAL CROSS SECTION SHALL BE HOLES. HOLES SHALL BE NO CLOSER THAN 75 TO A JOINT.

PROJECT: STOCKBRIDGE	PROJECT NO.: BRF 022-1 (20)
DESIGN FILE NAME: 85e039\Structures\de039dsd.dgn	PLOT DATE: 08-APR-2010
IPARM FILE NAME: de039scupper.i	DRAWN BY: R. S. YOUNG
DESIGNED BY: R. S. YOUNG	CHECKED BY:
SQUAD LEADER: C. P. WILLIAMS	
PRECAST DROP INLET DETAILS	SHEET: 69 OF 139