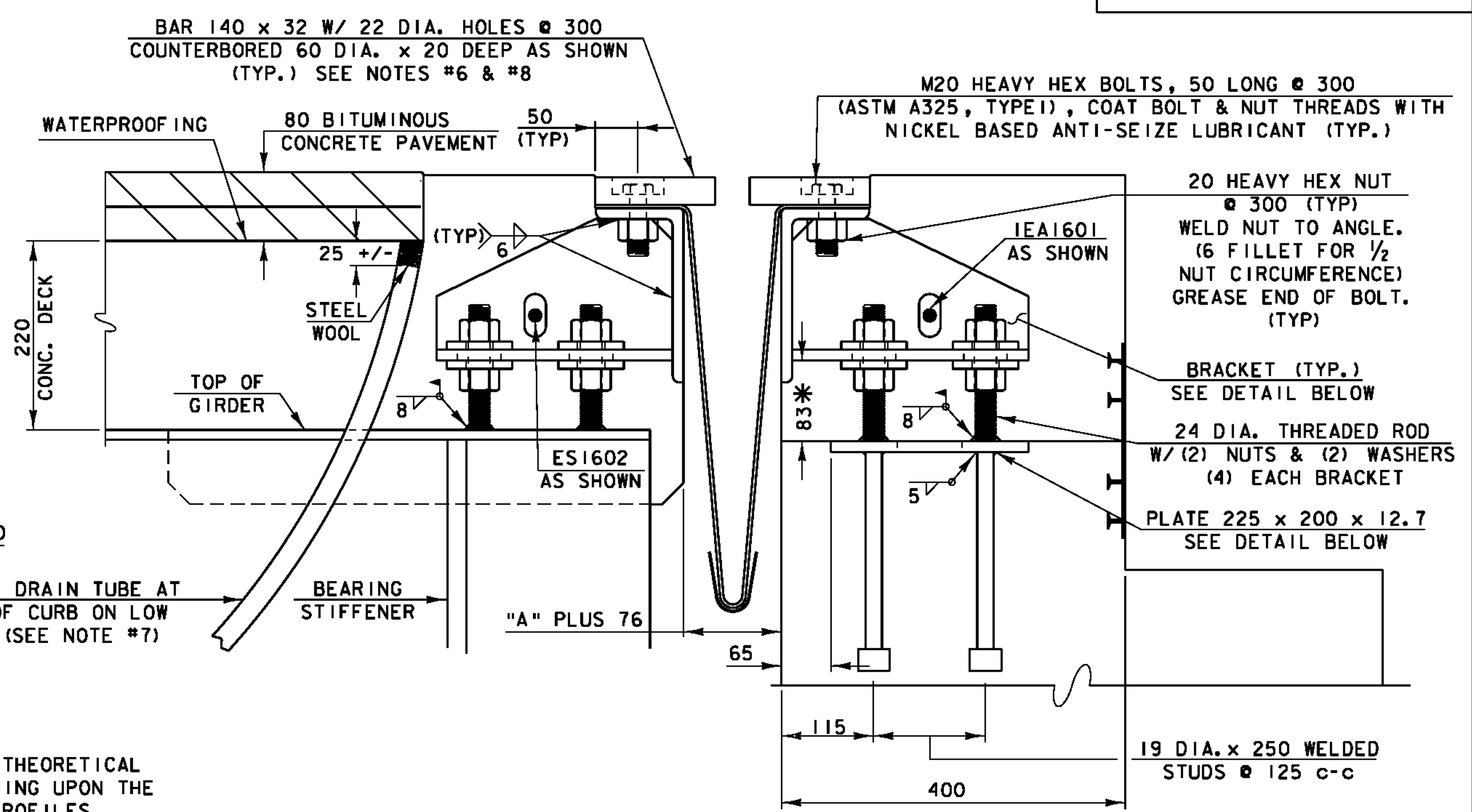
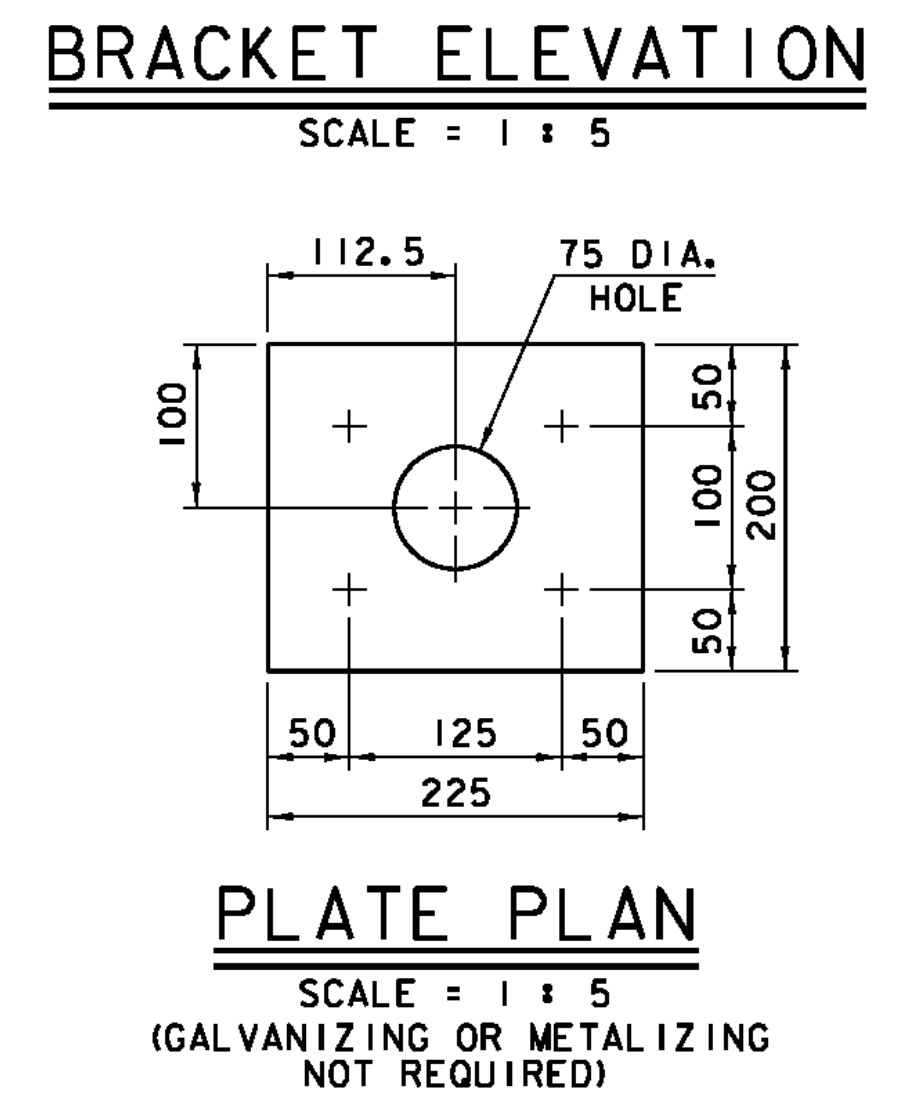
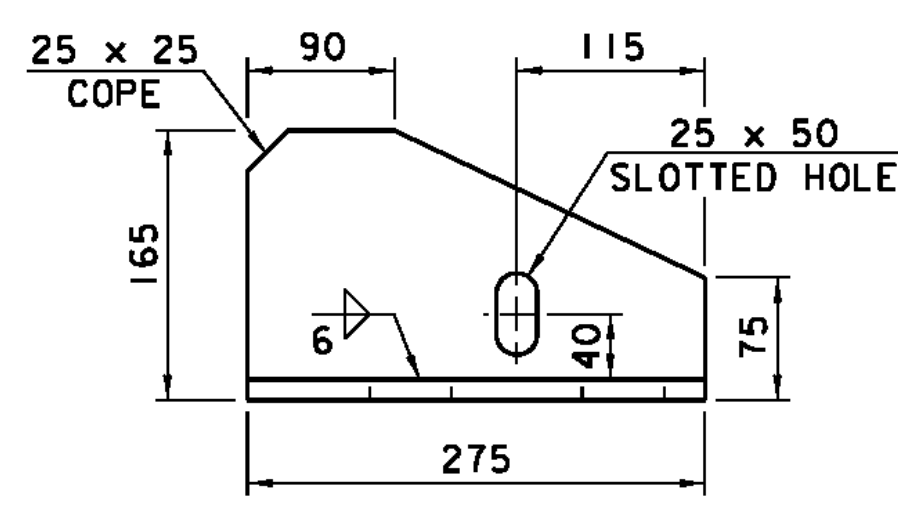
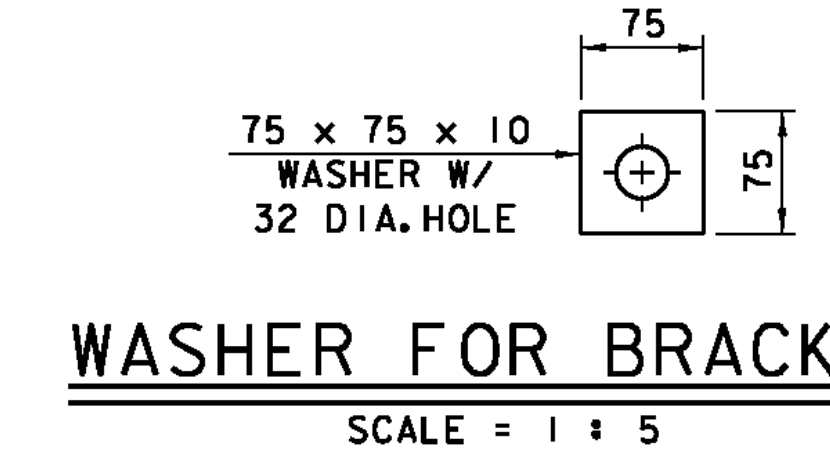
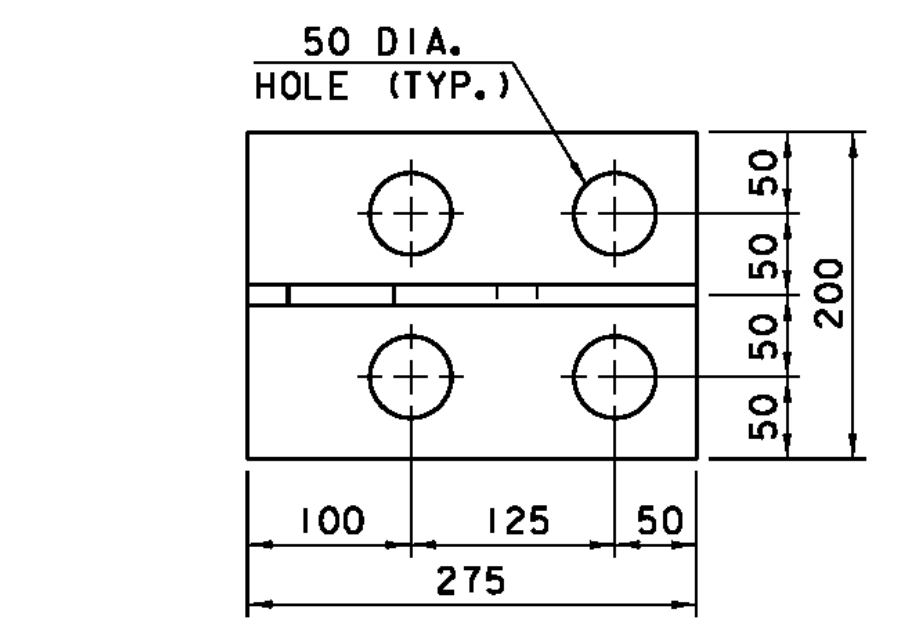
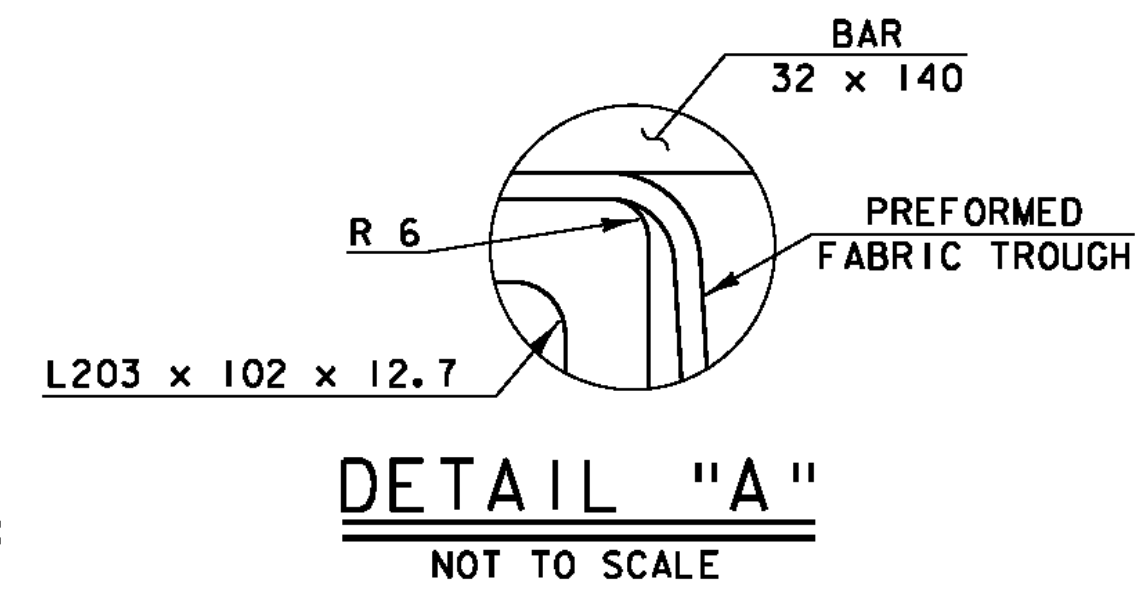
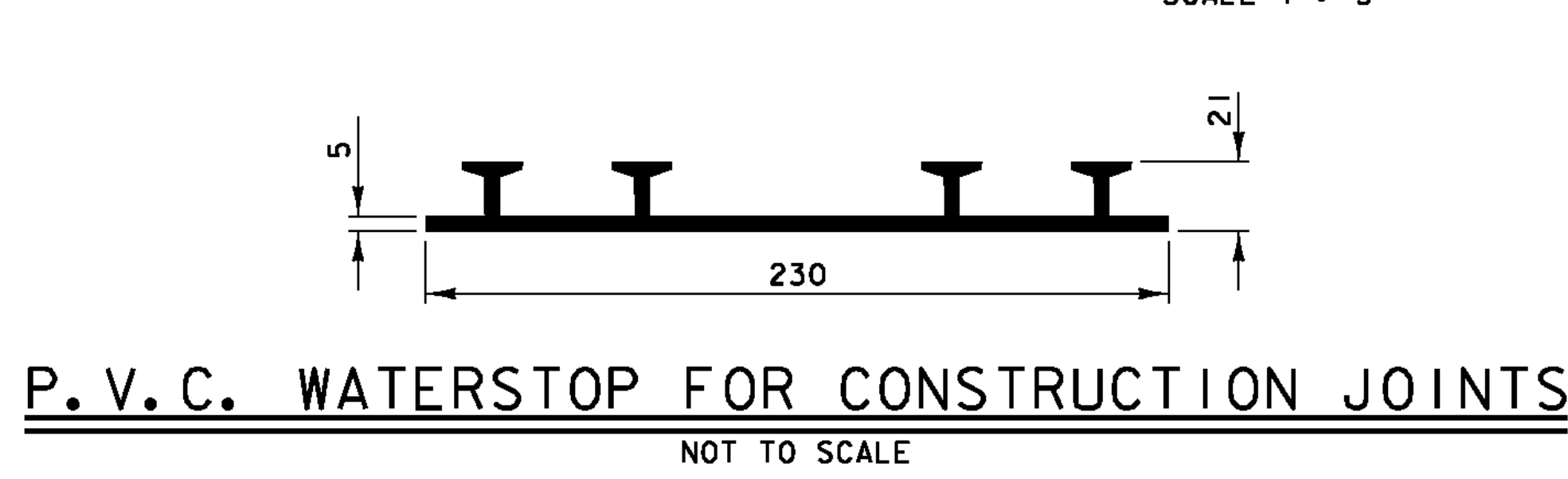


**TYPICAL SECTION BETWEEN GIRDERS**  
(NORMAL TO  $\phi$  BEARING)  
SCALE 1 : 5

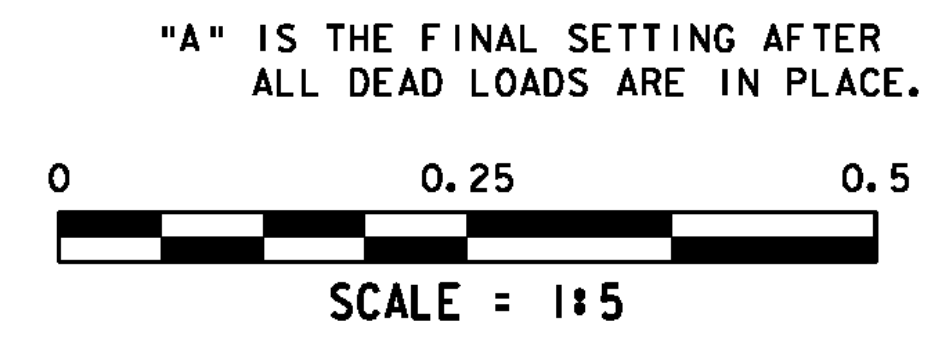


**TYPICAL SECTION AT GIRDERS**  
(NORMAL TO  $\phi$  BEARING)  
SCALE 1 : 5



ALL PLATES 12 mm THICK

TEMP	"A" DIST.
-15°C	57
-5°C	51
5°C	46
15°C	41
25°C	36
35°C	30
45°C	25



- EXPANSION JOINT NOTES**
- DETAILS ON THIS SHEET ARE FOR ITEM 516.11 "BRIDGE EXPANSION JOINT, VERMONT"
  - PREFORMED FABRIC MATERIAL SHALL BE CONTINUOUS FOR THE FULL LENGTH OF THE JOINT.
  - THE FINAL FINISH OF THE EXPANSION DEVICE SHALL BE COVERED DURING THE PLACING OF BRIDGE DECK CONCRETE.
  - ALL STEEL COMPONENTS SHALL BE GALVANIZED OR METALIZED AND MEET THE REQUIREMENTS OF SUBSECTION 516.02. THREADED RODS SHALL CONFORM TO THE REQUIREMENTS OF SUBSECTION 714.04. THE 225 x 200 x 12.7 ANCHOR PLATE AND WELDED STUD ASSEMBLY MAY BE SUPPLIED WITHOUT GALVANIZING OR METALIZING.
  - THE ITEM "BRIDGE EXPANSION JOINT, VERMONT" SHALL INCLUDE THE FABRICATION AND ERECTION OF THE COMPLETE JOINT ASSEMBLY INCLUDING ALL STEEL PLATES, BRACKETS, ANGLES, WELDED STUDS OR RODS, PREFORMED FABRIC DRAIN TROUGH MATERIAL AND PLASTIC DRAIN TUBES, BUTYL RUBBER TAPE AND ANY OTHER MISCELLANEOUS MATERIAL NECESSARY TO INSTALL JOINT.
  - THE 203 x 102 x 12.7 ANGLES SHALL BE FURNISHED AS ONE CONTINUOUS PIECE. THE 140 x 32 BARS EACH SIDE OF THE JOINT SHALL BE PROVIDED IN TWO EQUAL LENGTHS.
  - A 25 DIAMETER PLASTIC DRAIN TUBE (SUBSECTION 740.01) SHALL BE INSTALLED AS SHOWN AT THE FACE OF CURB. THE UPPER END IS TO BE PLUGGED WITH STEEL WOOL AND THE LOWER END IS TO EXTEND BELOW THE BOTTOM OF THE ADJACENT BEAM. STEEL WOOL MATERIAL WILL BE APPROVED BY THE ENGINEER. THE DRAIN TUBES SHALL BE FASTENED TO THE BEAMS USING A METHOD APPROVED BY THE ENGINEER.
  - FILL COUNTERBORED HOLES WITH HOT POURED JOINT SEALER (SUBSECTION 707.04) AFTER BOLT INSTALLATION. PAYMENT FOR THE WORK SHALL BE INCIDENTAL TO ITEM 516.11 "BRIDGE EXPANSION JOINT, VERMONT".

- PAYMENT FOR THE P.V.C. WATERSTOP SHALL BE INCLUDED IN THE UNIT PRICE BID FOR ITEM 501.34, "CONCRETE, HIGH PERFORMANCE CONCRETE CLASS B". OTHER CONFIGURATIONS MAY BE USED UPON APPROVAL BY THE STRUCTURES ENGINEER.
- A DRIP BEAD OF 6 x 180 STRIP OF PREFORMED FABRIC MATERIAL SHALL BE CEMENTED TO THE BOTTOM OF THE FABRIC TROUGH USING AN ADHESIVE APPROVED BY THE MANUFACTURER. THE DRIP BEAD SHALL BE APPLIED 25 FROM THE DOWNSPOUT END OF THE TROUGH.
- THE FABRIC TROUGH SHALL BE THOROUGHLY CLEANED AND FLUSHED AFTER PAVING OPERATION.
- PRIOR TO GALVANIZING OR METALIZING, ALL CORNERS AND EDGES OF STEEL PLATES, SHAPES, ETC., SHALL BE GROUND TO A 1.6 RADIUS.
- TEMPORARY SHIPPING ATTACHMENTS SHALL BE ATTACHED BY BOLTING; WELDING WILL NOT BE PERMITTED.
- PROJECTING THREADS OF THE M20 BOLTS IN THE JOINT SHALL BE GREASED BY THE CONTRACTOR PRIOR TO PLACING ADJACENT CONCRETE. THIS WILL FACILITATE BOLT REMOVAL IF REQUIRED IN THE FUTURE.

PROJECT: <b>STOCKBRIDGE</b>	PROJECT NO. # <b>BRF 022-1 (20)</b>
DESIGN FILE NAME: 85e039\Structures\de039joint.dgn	PLOT DATE: 08-APR-2010
IPARM FILE NAME: de039joint1.i	DRAWN BY: W. B. SYMONDS
DESIGNED BY: W. B. SYMONDS	CHECKED BY: R. S. YOUNG
SQUAD LEADER: C. P. WILLIAMS	EXPANSION JOINT TYPICAL SECTION SHEET: 61 OF 139