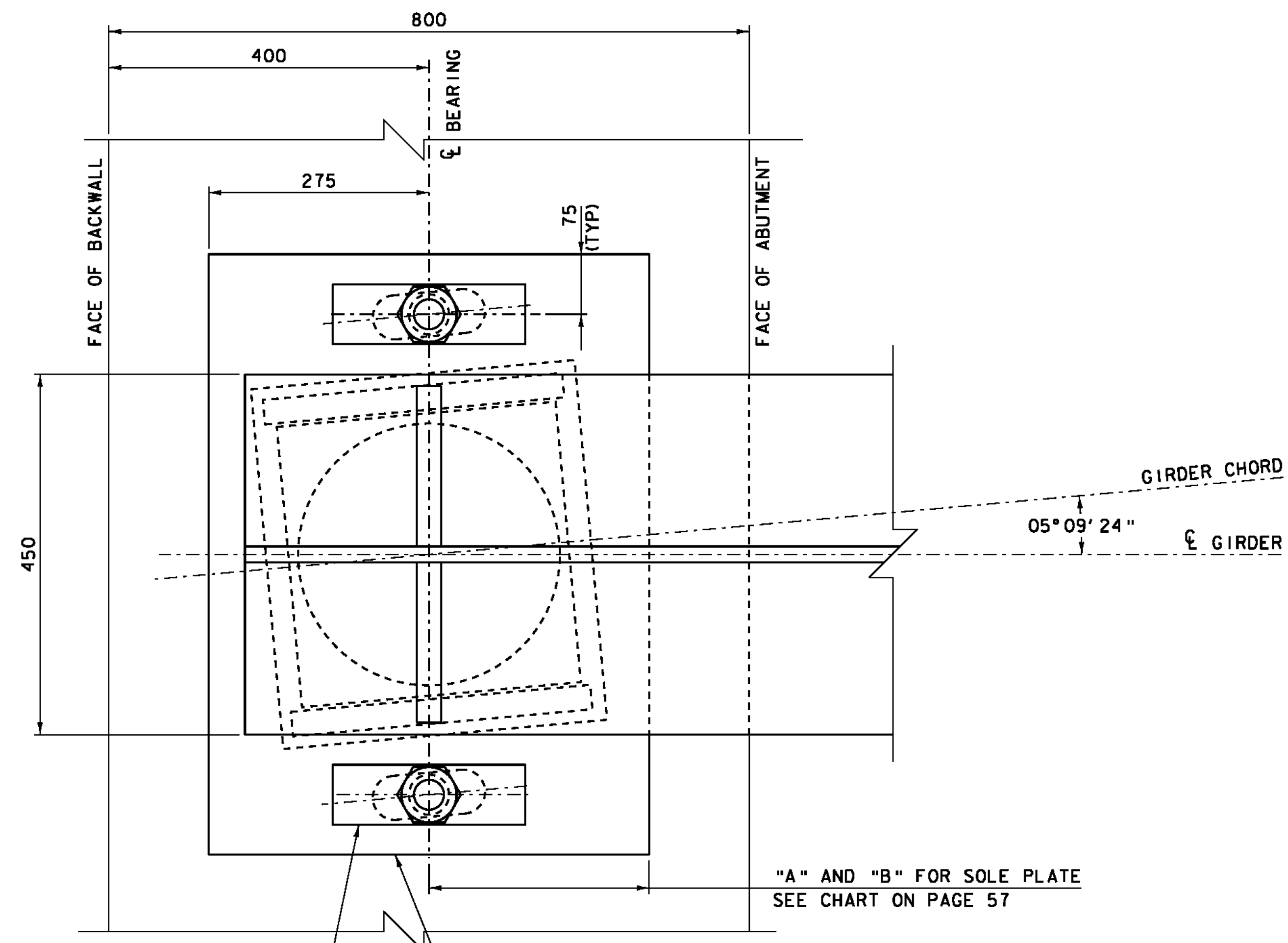


# BEARING NOTES

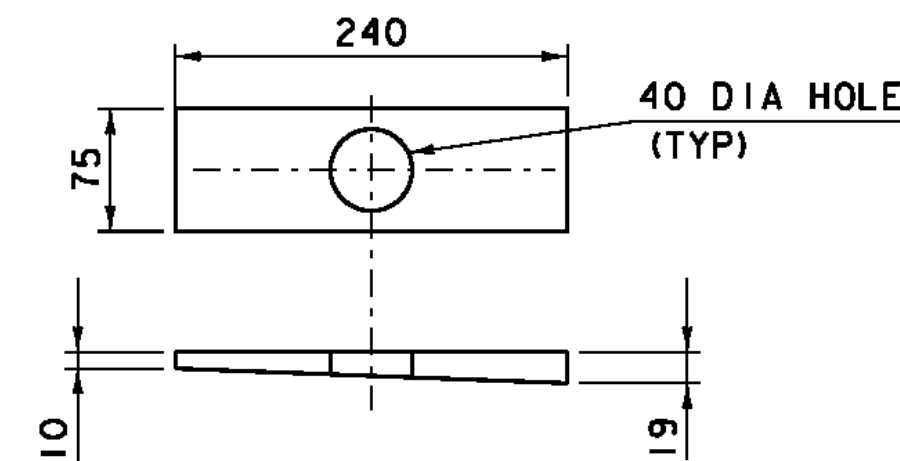
1. BEARINGS SHALL CONFORM TO THE CURRENT AASHTO LRFD BRIDGE DESIGN SPECIFICATIONS.
2. PAYMENT FOR BEARINGS SHALL BE UNDER ITEM 531.2 "BEARING DEVICE ASSEMBLY, POT", AND SHALL CONFORM TO SECTIONS 531 AND 731, AS APPLICABLE.
3. ANCHOR BOLTS SHALL BE A-449 AND CONFORM TO SUBSECTION 714.08. STEEL SHALL BE AASHTO M270M/M 270, GRADE 345.
4. STEEL PLATES AND POT SHALL BE METALIZED AS PER SUBSECTIONS 531.04(b) AND 506.15(b). ANCHOR BOLTS, NUTS, AND WASHERS SHALL BE GALVANIZED PER SUBSECTION 531.04(b). THE INSIDE OF THE POTS SHALL NOT BE METALIZED. AREAS OF METALIZING DAMAGED BY FIELD WELDING OR HANDLING SHALL BE PAINTED WITH A ZINC RICH PAINT IN ACCORDANCE WITH SECTION 513.
5. CONNECTIONS BETWEEN THE POT AND THE SOLE PLATE AND MASONRY PLATE SHALL BE DESIGNED BY THE BEARING SUPPLIER. THE MASONRY PLATE SHALL BE A MINIMUM OF 25 mm THICK.
6. THE CONCRETE SURFACE UNDER THE BEARING DEVICE SHALL BE LEVEL.
7. DESIGN CRITERIA:
  - A. MASONRY PLATE TO CONCRETE DESIGN PRESSURE = 6.9 MPa MAXIMUM.
  - B. MINIMUM ALLOWABLE DESIGN ROTATION = 0.015 RADIANS.
  - C. HORIZONTAL CAPACITY SHALL BE A MINIMUM OF 20% OF THE VERTICAL LOAD.
  - D. VERTICAL DESIGN LOAD PER BEARING SHALL BE ACCORDING TO THE DESIGN LOAD TABLE ON SHEET 60.
8. THE CONTRACTOR MAY SUBMIT DESIGNS FOR ALTERNATE BEARINGS FOR APPROVAL.
9. ALL BEARINGS SHALL BE MARKED PRIOR TO SHIPPING. THE MARKS SHALL INCLUDE THE BEARING LOCATION ON THE BRIDGE AND A DIRECTION ARROW THAT POINTS UP-STATION. ALL MARKS SHALL BE PERMANENT AND VISIBLE AFTER THE BEARING IS INSTALLED.



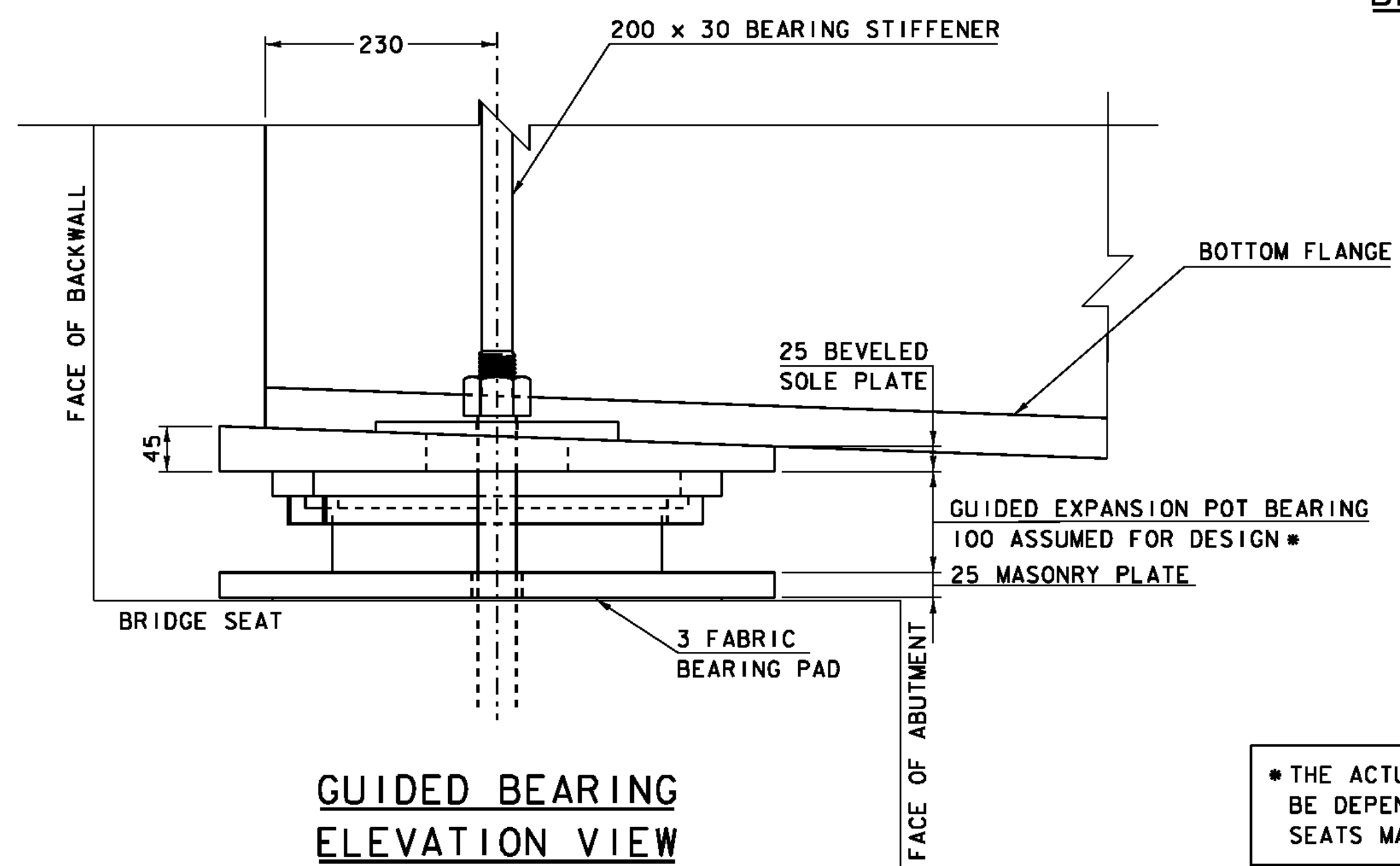
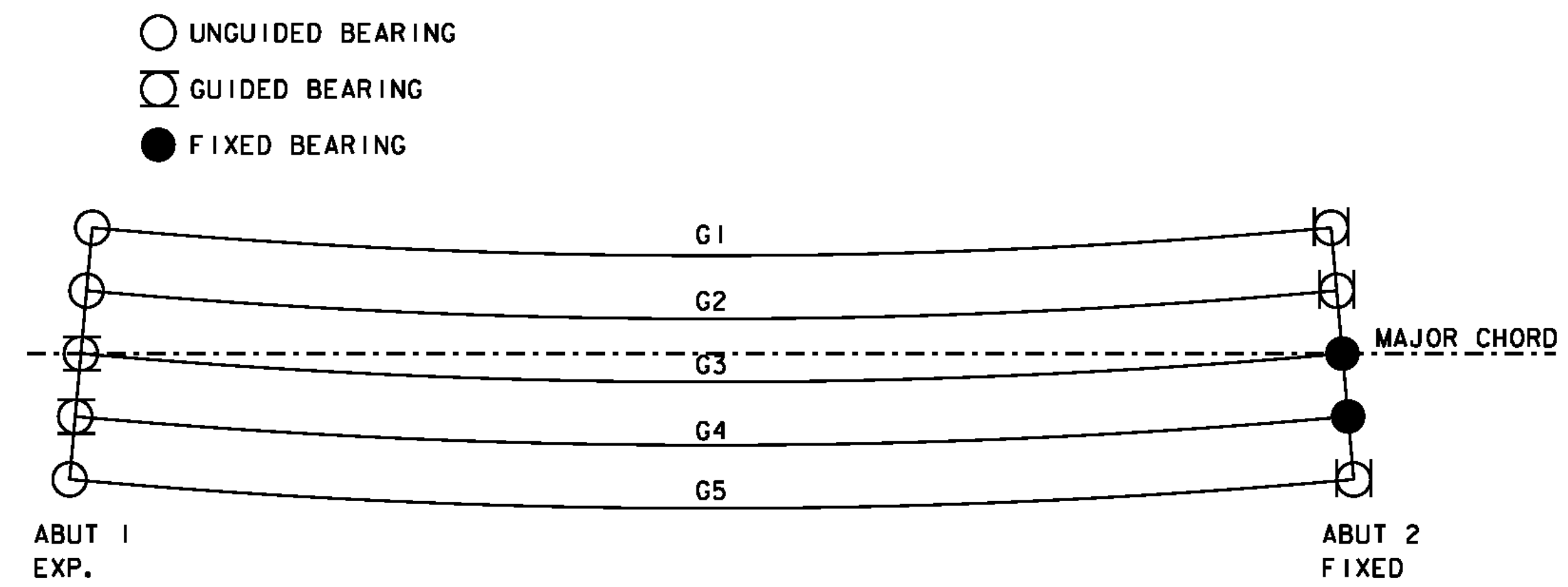
240 x 75 x 10 BEVELED WASHERS  
 140 x 55 SLOT IN SOLE PLATE  
 PARALLEL TO GIRDER CHORD (TYP)  
 50 DIA HOLE IN MASONRY PLATE (TYP)

750 x 550 x 25 BEVELED SOLE PLATE  
 750 x 550 x 25 MASONRY PLATE

**GUIDED BEARING  
 PLAN VIEW  
 SCALE = 1:5**

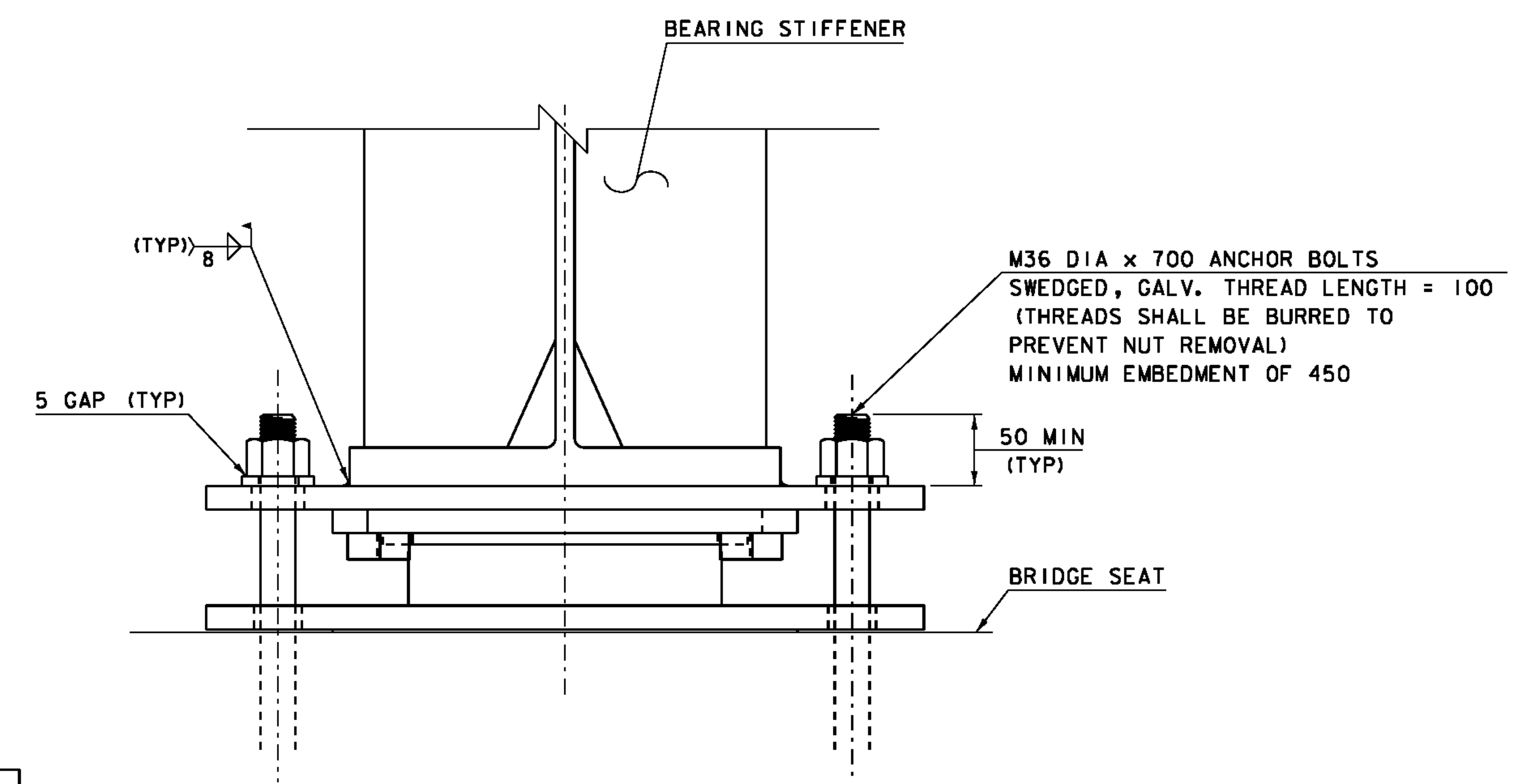


**BEVELED WASHERS  
 SCALE = 1:5**

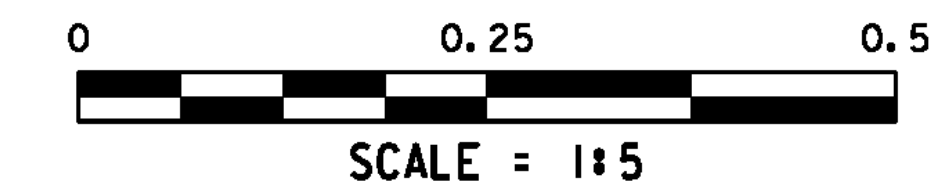


**GUIDED BEARING  
 ELEVATION VIEW  
 SCALE = 1:5**

\* THE ACTUAL CONFIGURATION OF THE COMPONENTS WILL BE DEPENDENT UPON THE BEARING FABRICATOR. BRIDGE SEATS MAY NEED ADJUSTMENT.



**GUIDED BEARING  
 TYPICAL SECTION  
 SCALE = 1:5**



## GUIDED BEARINGS FOR GIRDERS 3 & 4 ON ABUTMENT #1

PROJECT: STOCKBRIDGE	PROJECT NO. # BRF 022-1 (20)
DESIGN FILE NAME: 85e039\Structures\de039bearing.dgn	PLOT DATE: 08-APR-2010
IPARM FILE NAME: de039bear2.i	DRAWN BY: D. D. BEARD
DESIGNED BY: R. YOUNG	CHECKED BY: R. YOUNG
SQUAD LEADER: C. P. WILLIAMS	SHEET: 58 OF 139
GUIDED BEARINGS ABUT #1	