

Bituminous Concrete Curb, Type A
10+120.00 - 10+163.60 Lt.

Manufactured Terminal Section, Flared
10+242.40 ~ 10+253.60 Rt.

Removal and Disposal of Guardrail
10+120.00 - 10+180.00 Rt.
10+227.00 - 10+243.00 Rt.

Construct Drive
10+260.00 Rt - 35M Gravel,
w/2.0M Paved Apron, 10.6M Wide

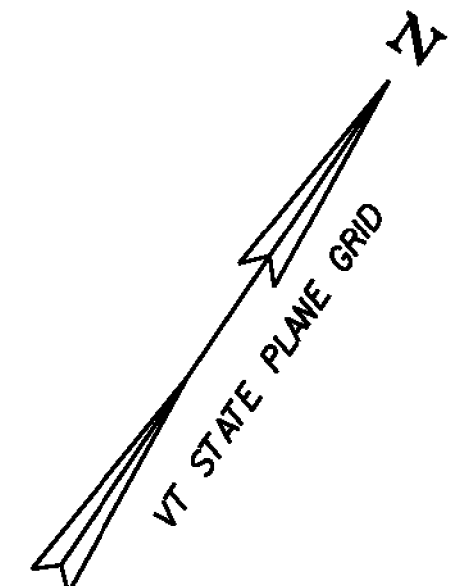
HD Steel Beam Guardrail, Galvanized •
10+120.00 ~ 10+165.10 Lt.
10+120.00 ~ 20+045.00 Rt. (10+154.19 Rt.)
20+045.00 Lt. (10+160.44 Rt.) ~ 10+165.52 Rt.
10+231.21 ~ 10+242.40 Rt.
10+231.62 ~ 10+275.00 Lt.

* SEE RAILING LAYOUT SHEET
FOR BRIDGE AND APPROACH RAIL LIMITS

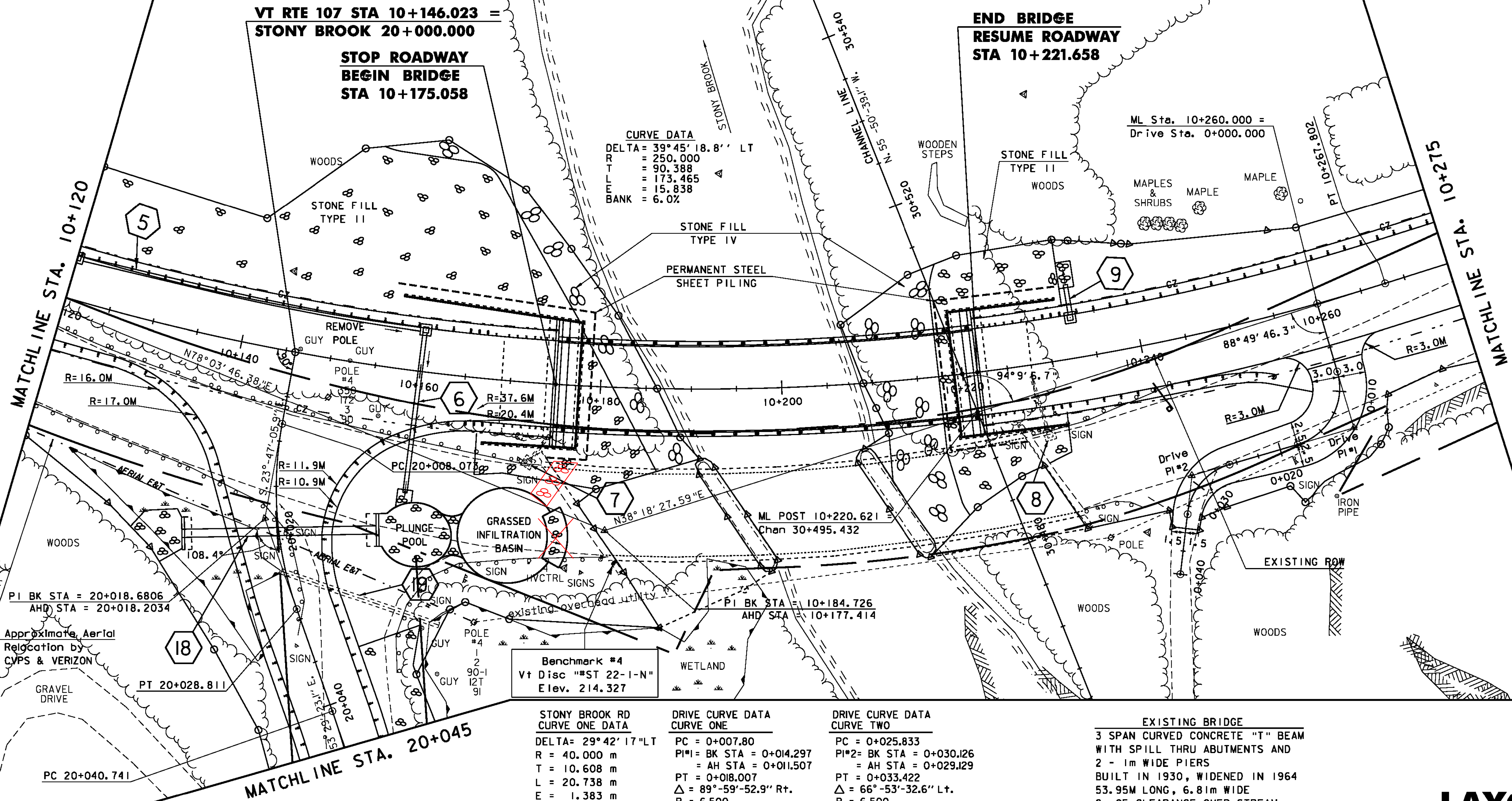
SEE DRAINAGE DETAIL SHEET
FOR DRAINAGE FLAG DESCRIPTIONS

Construct Infiltration Basin/Plunge Pool
10+170.000 Rt.

Disconnection Area
per Stormwater Permit #4233-INDS
10+223 - 10+275 Lt.



Cast-in-place Concrete Curb, type B
10+163.60 ~ 10+175.05 Lt.
10+163.45 ~ 10+175.05 Rt.
10+221.64 ~ 10+233.35 Rt.
10+221.67 ~ 10+233.85 Lt.



Benchmark #4
Vt Disc "#ST 22-1-N"
Elev. 214.327

| | | |
|--|---------------------------------------|---------------------------------------|
| STONY BROOK RD CURVE ONE DATA | DRIVE CURVE DATA CURVE ONE | DRIVE CURVE DATA CURVE TWO |
| DELTA = 29° 42' 17" LT | PC = 0+007.80 | PC = 0+025.833 |
| R = 40.000 m | PI#1 = BK STA = 0+014.297 | PI#2 = BK STA = 0+030.126 |
| T = 10.608 m | = AH STA = 0+011.507 | = AH STA = 0+029.129 |
| L = 20.738 m | PT = 0+018.007 | PT = 0+033.422 |
| E = 1.383 m | Δ = 89°-59'-52.9" Rt. | Δ = 66°-53'-32.6" Lt. |
| | R = 6.500 | R = 6.500 |
| | T = 6.500 | T = 4.293 |
| | L = 10.210 | L = 7.589 |
| | E = 2.692 | E = 1.290 |
| | Bearings | Bearings |
| | S. 50°-31'-12.9" E. bk | S. 39°-28'-40.0" W. bk |
| | S. 39°-28'-40.0" W. ahd | S. 27°-24'-52.7" E. ahd |

EXISTING BRIDGE
3 SPAN CURVED CONCRETE "T" BEAM
WITH SPILL THRU ABUTMENTS AND
2 - 1m WIDE PIERS
BUILT IN 1930, WIDENED IN 1964
53.95M LONG, 6.81M WIDE
9m OF CLEARANCE OVER STREAM

LAYOUT 3



PROJECT NAME: STOCKBRIDGE
PROJECT NUMBER: BRF 022-1(20)

FILE NAME: 85e039/de039bdr.dgn
PROJECT LEADER: C. P. Williams
DESIGNED BY: R. S. YOUNG
LAYOUT 3

PLOT DATE: 08-APR-2010
DRAWN BY: H. I. SALLS
CHECKED BY: R.S. Young
SHEET 17 OF 139