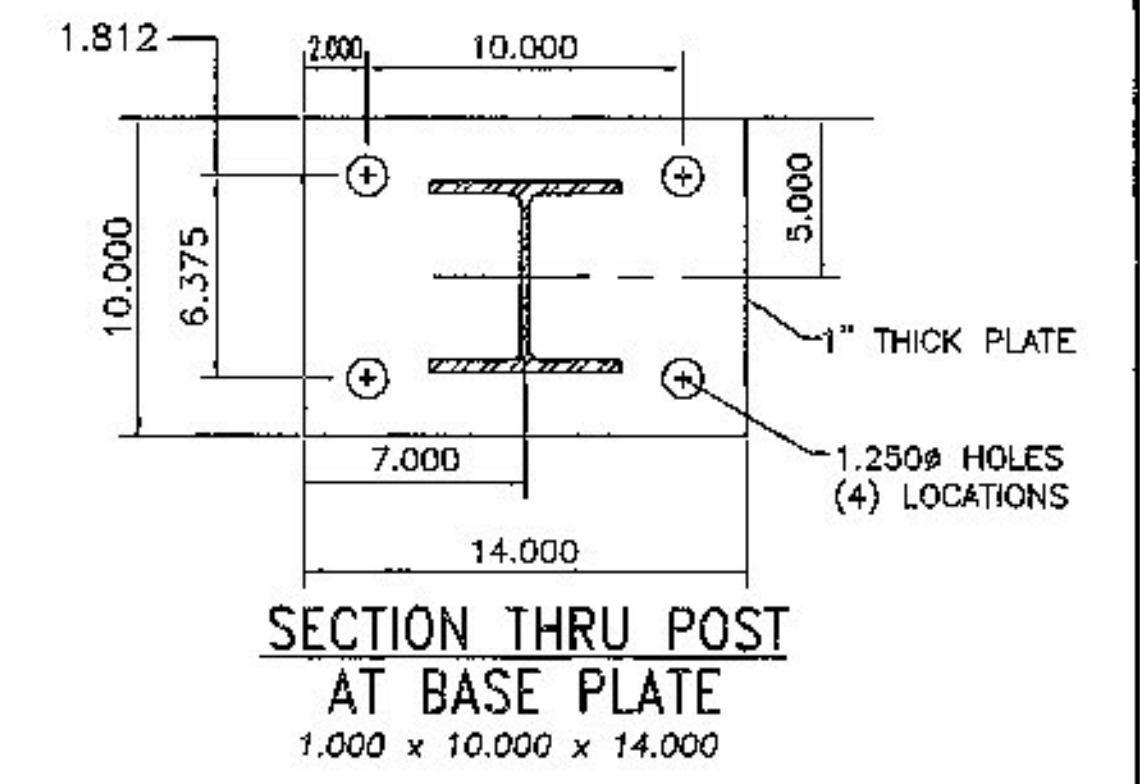
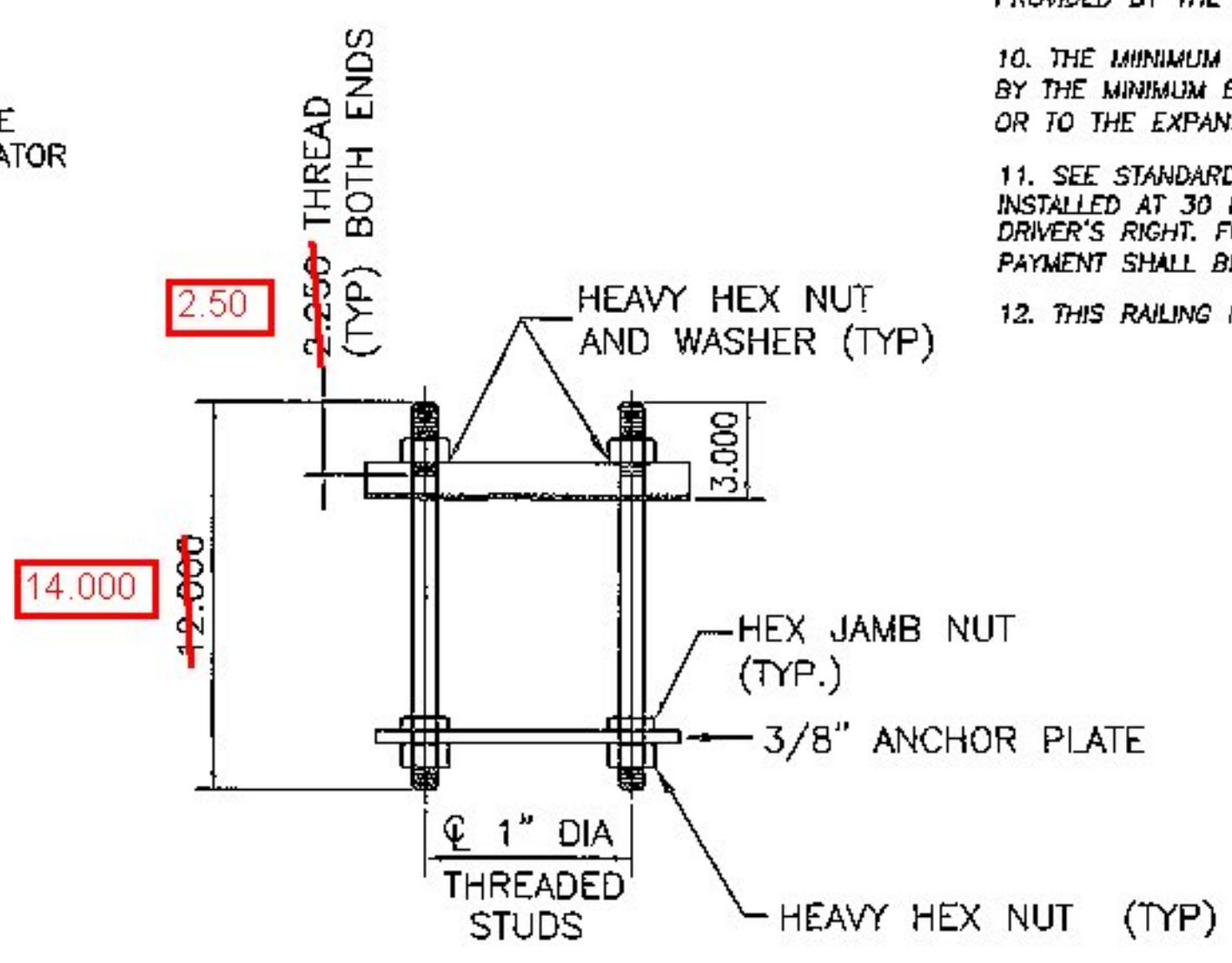


- NOTES**
- ALL WORK & MATERIALS SHALL CONFORM TO SECTION 525.
 - PRIOR TO GALVANIZING THE ASSEMBLY POST, GRIND ALL EDGES TO A MINIMUM RADIUS OF 1/16".
 - ALL POSTS SHALL BE SET NORMAL TO GRADE.
 - SECTION OF RAIL TUBE SHALL BE ATTACHED TO A MINIMUM OF TWO BRIDGE RAIL POSTS AND PREFERABLY TO AT LEAST FOUR POSTS.
 - RAIL TUBE EXPANSION JOINTS SHALL BE PROVIDED IN ANY RAIL BAY SPANNING THE END OF AN INTEGRAL ABUTMENT BRIDGE AND AT ALL SUPERSTRUCTURE EXPANSION JOINTS. EXPANSION JOINT WIDTH SHALL BE 4" AT 45 DEG. F AND WILL BE ADJUSTED IN THE FIELD BY THE ENGINEER FOR OTHER TEMPERATURES.
 - HOLES IN RAILS FOR RAIL TUBE ATTACHMENT MAY BE FIELD DRILLED. HOLES SHALL BE COATED WITH AN APPROVED ZINC-RICH PAINT PRIOR TO INSTALLATION.
 - RAIL POST ANCHORING NUTS SHALL BE TIGHTENED TO A SNUG FIT AND GIVEN AN ADDITIONAL 1/8 TURN.
 - RAIL TUBES SHALL BE ATTACHED USING 3/4" FULL DIAMETER BODY ASTM A 449 (TYPE 1) ROUND HEAD BOLTS WITH WASHER AND PREVAILING TORQUE TYPE LOCK NUT INSERTED THROUGH THE FACE OF THE TUBE. HOLES IN POSTS SHALL BE 1/16" LARGER THAN THE BOLT SIZE.
 - ANY BENDING OF RAIL SHALL BE DONE AT FABRICATION PLANT ACCORDING TO A PROCEDURE PROVIDED BY THE FABRICATOR.
 - THE MINIMUM DISTANCE FOR THE POST TO AN EXPANSION JOINT SHALL BE DETERMINED BY THE MINIMUM EDGE DISTANCE OF 5" FROM ANY ANCHOR STUD TO THE END OF THE SLAB, OR TO THE EXPANSION JOINT RECESS POUR, IF ONE IS USED.
 - SEE STANDARD DRAWING G-1 FOR DETAILS OF DELINEATORS. A DELINEATOR SHALL BE INSTALLED AT 30 FOOT SPACING OR THE NEAREST POST. WHITE IS TO BE INSTALLED ON THE DRIVER'S RIGHT. FOR ONE WAY BRIDGES, YELLOW IS TO BE INSTALLED ON THE DRIVER'S LEFT. PAYMENT SHALL BE INCIDENTAL TO OTHER ITEMS.
 - THIS RAILING MEETS THE REQUIREMENTS FOR A TL-4 SERVICE LEVEL.



Not fully threaded. 8 heavy hex nuts per post anchorage w/ 4 washers

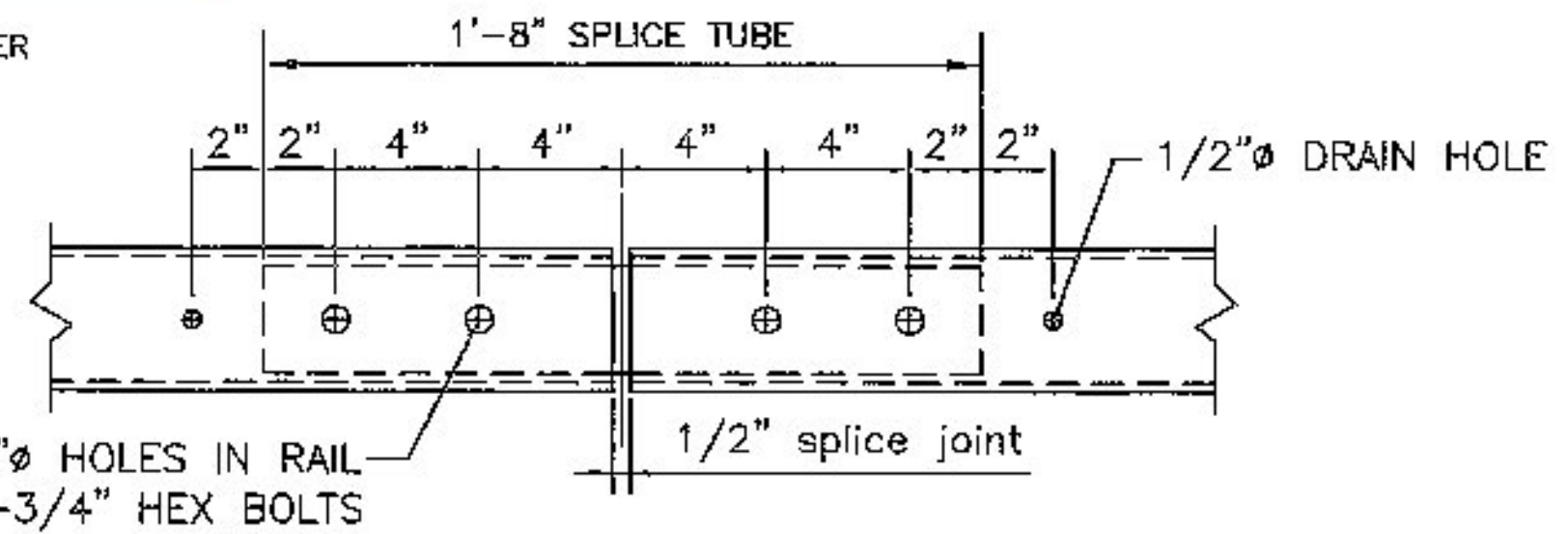
SECTION THRU RAIL @ TYPICAL POST

RAILING ELEVATION @ POST

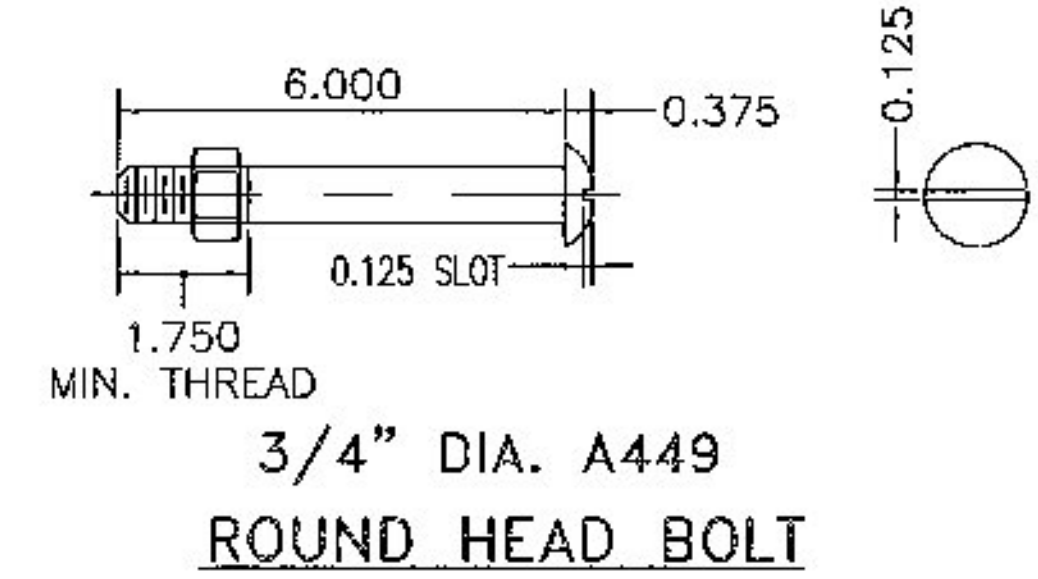
POST DETAIL FRONT FLANGE

RAIL POST ANCHORAGE

SECTION THRU POST AT BASE PLATE
1.000 x 10.000 x 14.000

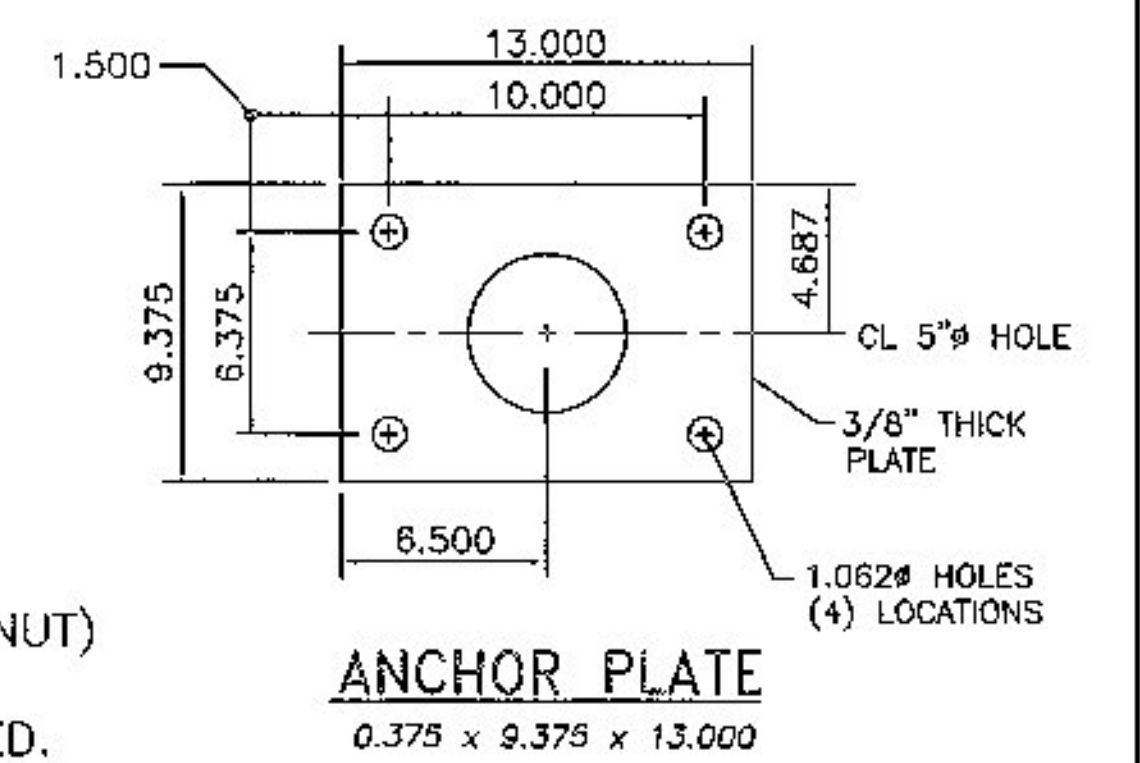


FIXED SPLICE JOINT DETAIL
BOTTOM VIEW

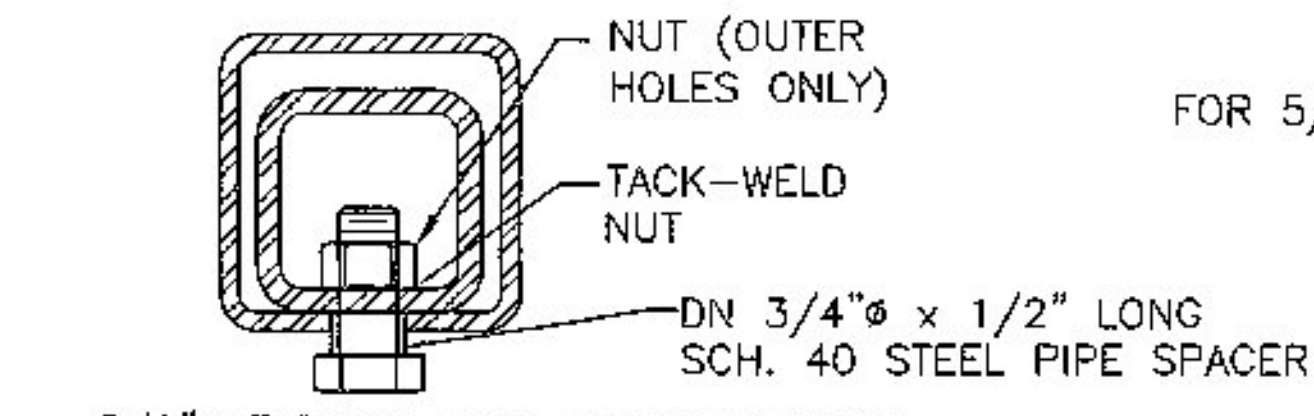


ROUND HEAD BOLT

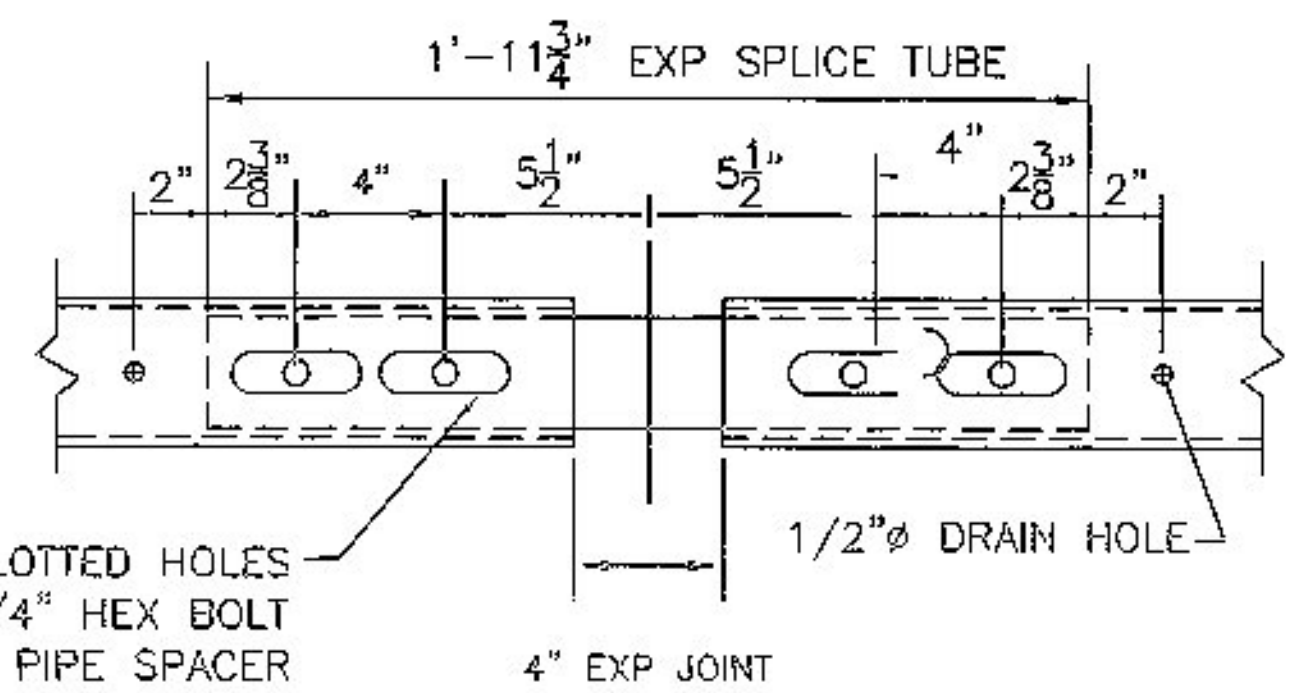
(WITH WASHER AND PREVAILING TORQUE TYPE LOCK NUT)
(SEE NOTE #8)
ONLY FULL DIAMETER BODY BOLTS WILL BE ALLOWED.



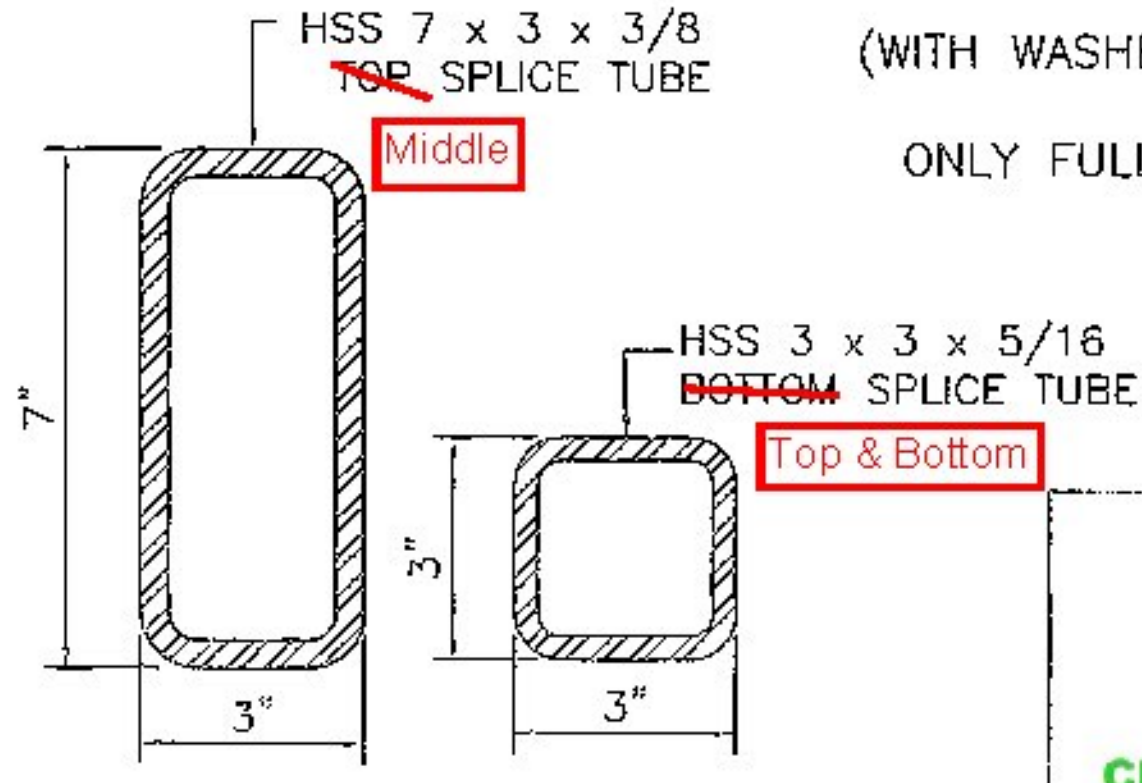
ANCHOR PLATE
0.375 x 9.375 x 13.000



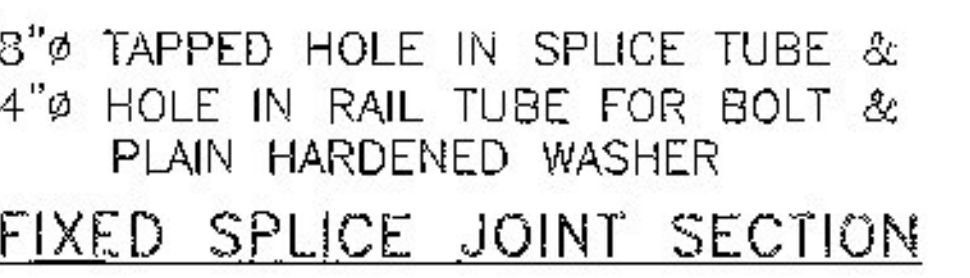
EXPANSION JOINT SECTION



EXPANSION SPLICE DETAIL
BOTTOM VIEW



RAIL TUBE SPLICE SECTION



FIXED SPLICE JOINT SECTION

Vermont Agency of Transportation
RECEIVED
CK'D BY M. Umberger OK'D BY H. Salls
July 15, 2014
RESUBMIT No Approved AsNoted
BY C. Carlson DATE 07/21/2014

HIGHWAY SAFETY CORP
GLASTONBURY, CT
860-533-9445
FROM 525.325 BRIDGE RAILING, GALVANIZED 3 RAIL BOX BEAM
TOWN OF STOWE, VERMONT
US RT VT 100 (MINOR ARTERIAL) BRIDGE #208
LAMOILLE COUNTY BRG 025-1 (17)
CERTIFIED FABRICATOR
1999
2 of 3
LAFAYETTE