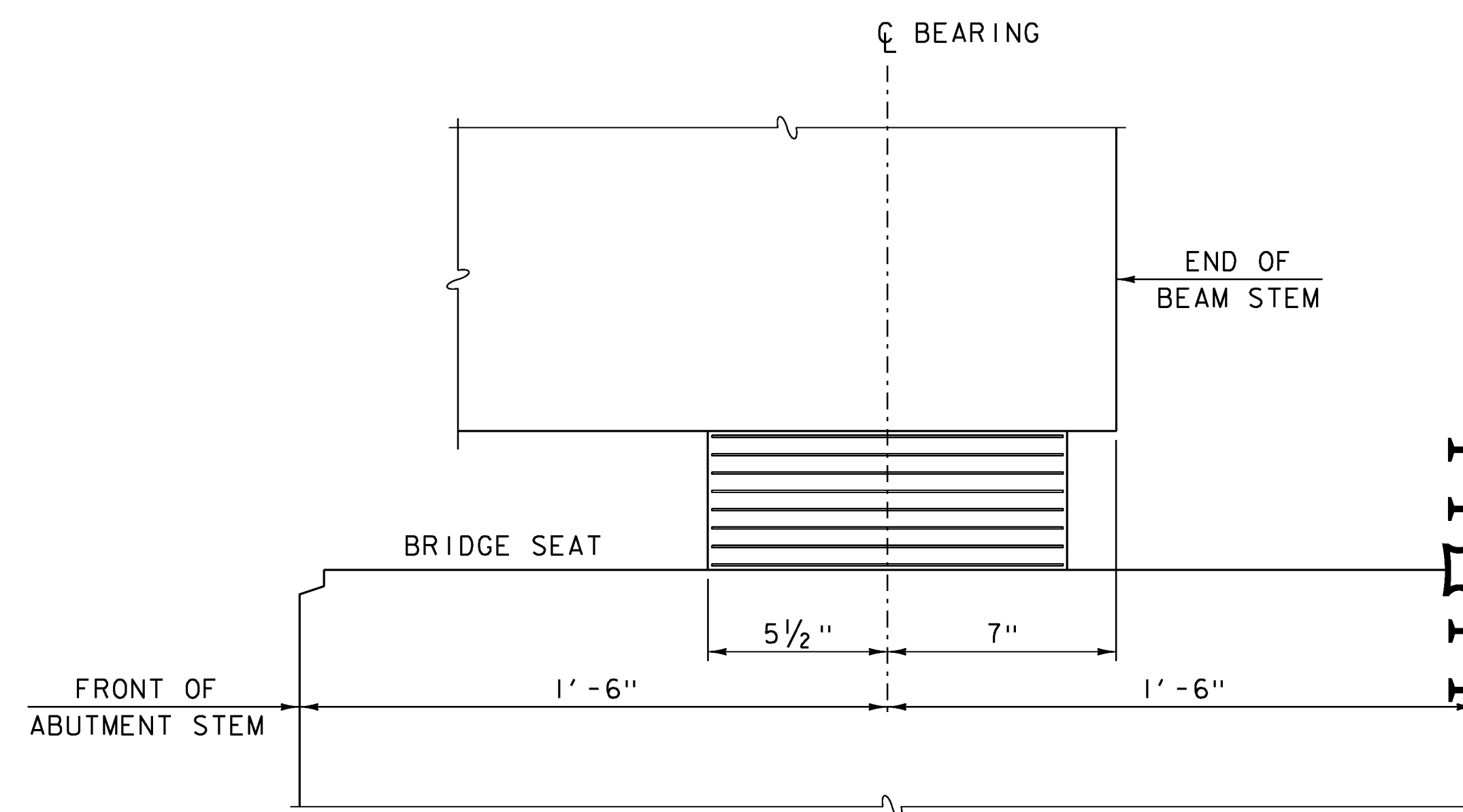


- \* 2 - 1/8" EXTERIOR LAYERS OF ELASTOMER
- 7 - 1/2" INTERIOR LAYERS OF ELASTOMER
- 8 - 1/16" STEEL REINFORCING PLATES

FRONT VIEW



SIDE VIEW

ELASTOMERIC BEARING DETAILS

SCALE: 3" = 1'-0"

BEARING NOTES

1. BEARINGS SHALL CONFORM TO THE APPLICABLE SUBSECTIONS OF STANDARD SPECIFICATIONS SECTIONS 531 AND 731.
2. ALL REINFORCEMENT BETWEEN LAYERS OF ELASTOMER SHALL BE STEEL AASHTO M270M/M270 GRADE 36. ALL INTERNAL STEEL PLATES SHALL BE SAND BLASTED AND FREE OF COATINGS, RUST AND MILL SCALE. THE PLATES SHALL BE FREE OF SHARP EDGES AND BURRS.
3. STEEL REINFORCED ELASTOMERIC BEARINGS SHALL HAVE A MINIMUM 1/8" EDGE SEAL OF ELASTOMER INTEGRAL WITH BEARING OVER ALL INTERNAL PLATES.
4. THE ELASTOMER WAS DESIGNED WITH A SHEAR MODULUS OF 100 PSI +/- 15%.
5. THE CONTRACTOR MAY NEED TO BRACE THE BEAMS TO PREVENT EXCESSIVE LATERAL DISPLACEMENT OF THE BEARING PRIOR TO THE BRIDGE BECOMING INTEGRAL.
6. THE CONTRACTOR IS ADVISED TO HAVE SHIMS AVAILABLE FOR USE FOR ELEVATION ADJUSTMENTS UPON THE SETTING OF THE SUPERSTRUCTURE UNITS. THE SHIMS SHALL BE FABRICATED ACCORDING TO SECTION 531 AND SHALL BE INCLUDED UNDER ITEM 531.17, "BEARING DEVICE ASSEMBLY, STEEL REINFORCED ELASTOMERIC PAD".

PROJECT NAME: STOWE  
PROJECT NUMBER: BRF 029-1(17)

FILE NAME: s85e037brg.dgn  
PROJECT LEADER: C. CARLSON  
DESIGNED BY: H. I. SALLS  
ELASTOMERIC BEARING DETAILS

PLOT DATE: 17-JUN-2013  
DRAWN BY: H. I. SALLS  
CHECKED BY: G. ROY  
SHEET 35 OF 70